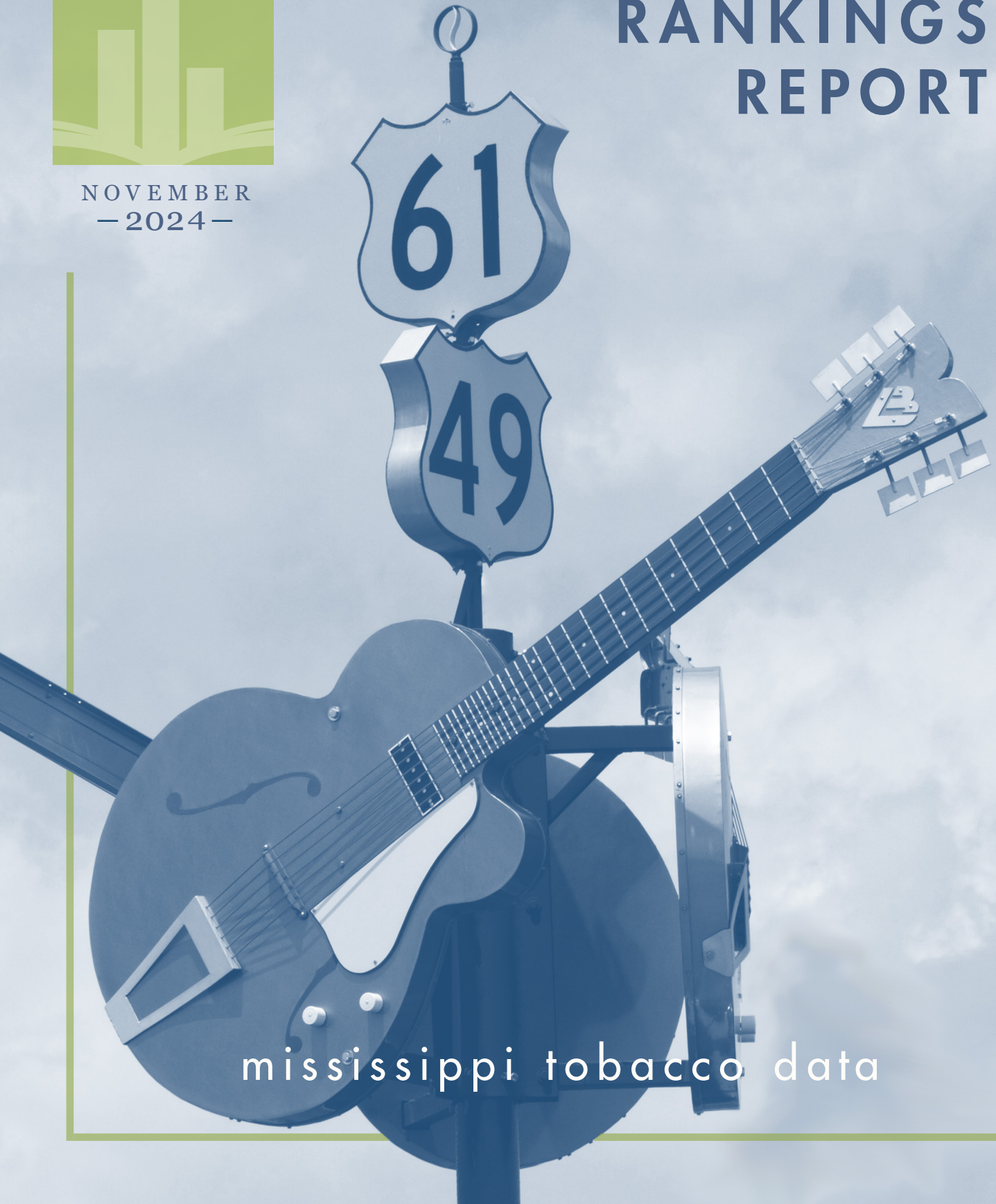




NOVEMBER  
— 2024 —

# STATE RANKINGS REPORT



mississippi tobacco data



# METHODS

## INFORMATION ABOUT THE DATA SOURCES

### THE YOUTH RISK BEHAVIOR SURVEILLANCE SYSTEM

The Youth Risk Behavior Surveillance System (YRBSS) was designed in 1990 to determine the prevalence of health risk behaviors such as tobacco use, unhealthy dietary behaviors, inadequate physical activity, alcohol and drug use, sexual behaviors contributing to unintended pregnancy and sexually transmitted diseases, and behaviors contributing to unintended injuries and violence. The YRBSS is intended to assess whether health risk behaviors increase, decrease, or stay the same over time, as well as examine the co-occurrence of health risk behaviors. The YRBSS provides comparable national and state data among subpopulations of youth. The YRBSS includes national and state school-based surveys of representative samples of 9th through 12th grade students. These surveys are conducted every two years, usually during the spring semester. The national survey, conducted by the Centers for Disease Control and Prevention (CDC), provides data representative of high school students in public and private schools in the United States. The state surveys, conducted by departments of health and education, provide data representative of the state.

The YRBSS data are provided for 1991, 1993, 1995, 1997, 1999, 2001, 2003, 2005, 2007, 2009, 2011, 2013, 2015, 2019, and 2021 (the 2005 survey was not administered in Mississippi due to Hurricane Katrina).

### BEHAVIORAL RISK FACTOR SURVEILLANCE SYSTEM

The Behavioral Risk Factor Surveillance System (BRFSS) is a state-based system of health surveys that was developed and conducted in order to monitor state-level prevalence of the major behavioral risks among adults associated with premature morbidity and mortality. The basic philosophy was to collect data on actual behaviors, rather than attitudes or knowledge, that would be particularly useful for planning, initiating, supporting, and evaluating health promotion and disease prevention programs.

The BRFSS is a cross-sectional telephone survey conducted by state health departments with technical and methodological assistance provided by the CDC. Every year, states conduct monthly telephone surveillance using a standardized questionnaire to determine the distribution of risk behaviors and health practices among non-institutionalized adults. Adults 18 and over are asked to take part in the survey. Only one adult is interviewed per household. Data from Mississippi adults are available on the BRFSS website from 1995-2023.

### ABOUT THE TABLES

The following tables provide prevalence estimates for current smoking, as well as 95% confidence intervals. States are ranked from highest prevalence to lowest prevalence. State rankings, however, should be interpreted with caution. Rank differences do not necessarily reflect meaningful differences between states. Also, states and communities are rapidly implementing new tobacco control policies. Thus, some rankings may have changed since we produced this report.

THIS REPORT WAS PRODUCED BY SCIENTISTS AT THE SOCIAL SCIENCE RESEARCH CENTER OF MISSISSIPPI STATE UNIVERSITY. THIS PROJECT IS FUNDED BY A GRANT OF THE MISSISSIPPI STATE DEPARTMENT OF HEALTH. ANY OPINIONS IMPLIED OR EXPRESSED HERE ARE THOSE OF THE AUTHORS AND DO NOT NECESSARILY REFLECT THOSE OF THE MISSISSIPPI STATE DEPARTMENT OF HEALTH OR OF MISSISSIPPI STATE UNIVERSITY.

# POPULATION COVERED

BY 100% SMOKEFREE AIR LAWS: 2024

RANK	STATE	PERCENT PROTECTED
1	ARIZONA	100.0%
	CALIFORNIA	100.0%
	COLORADO	100.0%
	CONNECTICUT	100.0%
	DELAWARE	100.0%
	HAWAII	100.0%
	ILLINOIS	100.0%
	IOWA	100.0%
	KANSAS	100.0%
	MAINE	100.0%
	MARYLAND	100.0%
	MASSACHUSETTS	100.0%
	MICHIGAN	100.0%
	MINNESOTA	100.0%
	MONTANA	100.0%
	NEBRASKA	100.0%
	NEW JERSEY	100.0%
	NEW MEXICO	100.0%
	NEW YORK	100.0%
	NORTH DAKOTA	100.0%
	OHIO	100.0%
	OREGON	100.0%
	RHODE ISLAND	100.0%
	SOUTH DAKOTA	100.0%
	UTAH	100.0%
	VERMONT	100.0%
	WASHINGTON	100.0%
	WASHINGTON D.C.	100.0%
	WISCONSIN	100.0%
30	WEST VIRGINIA	63.5%
31	ALASKA	47.1%
32	TEXAS	46.0%
33	KENTUCKY	37.2%
34	LOUISIANA	32.9%
35	SOUTH CAROLINA	32.0%
36	MISSISSIPPI	31.8%
37	INDIANA	31.5%
38	MISSOURI	29.1%
39	GEORGIA	17.0%
40	ALABAMA	13.4%
41	IDAHO	13.2%
42	ARKANSAS	0.5%
43	NORTH CAROLINA	0.3%
	WYOMING	0.3%
45	FLORIDA	0.0%
	NEVADA	0.0%
	NEW HAMPSHIRE	0.0%
	OKLAHOMA	0.0%
	PENNSYLVANIA	0.0%
	TENNESSEE	0.0%
	VIRGINIA	0.0%



Prior to 2006, less than 0.01% of the Mississippi population was protected from tobacco smoke by 100% smoke-free air laws in indoor public places. Mississippi currently ranks 36th in percent of the population protected from tobacco smoke in indoor public places.

**Source |** American Nonsmokers' Rights Foundation, January, 2024

# CURRENT SMOKING

## CIGARETTE SMOKING AMONG PUBLIC HIGH SCHOOL STUDENTS: 2021

RANK	STATE	PREVALENCE	LOWER CI	UPPER CI
1	WEST VIRGINIA	7.6%	4.6%	12.4%
2	LOUISIANA	7.0%	3.6%	13.2%
	MONTANA	7.0%	5.7%	8.6%
4	MISSISSIPPI	5.9%	4.5%	7.6%
	NORTH DAKOTA	5.9%	4.4%	7.9%
6	ALABAMA	5.7%	3.4%	9.4%
7	SOUTH DAKOTA	5.5%	2.5%	11.5%
8	VERMONT	5.4%	5.0%	5.8%
9	MISSOURI	5.1%	3.4%	7.7%
10	NEW YORK	5.0%	3.7%	6.6%
11	ARKANSAS	4.9%	3.8%	6.4%
	KENTUCKY	4.9%	3.5%	6.9%
	TENNESSEE	4.9%	3.8%	6.1%
14	NEVADA	4.8%	3.2%	7.1%
15	KANSAS	4.6%	2.7%	7.6%
16	COLORADO	4.5%	3.0%	6.8%
	WISCONSIN	4.5%	3.3%	6.1%
18	MAINE	4.3%	3.8%	4.8%
19	INDIANA	4.2%	2.3%	7.4%
	PENNSYLVANIA	4.2%	2.9%	6.2%
21	IOWA	4.1%	2.8%	6.2%
22	OKLAHOMA	4.0%	3.2%	4.9%
23	NORTH CAROLINA	3.9%	2.9%	5.4%
24	IDAHO	3.8%	2.5%	5.7%
25	NEW JERSEY	3.7%	2.0%	6.7%
	NEW MEXICO	3.7%	3.1%	4.3%
	TEXAS	3.7%	2.7%	5.2%
28	MARYLAND	3.6%	3.2%	3.9%
	NEBRASKA	3.6%	2.2%	5.9%
30	MASSACHUSETTS	3.5%	2.7%	4.5%
31	ARIZONA	3.4%	1.9%	5.8%
32	FLORIDA	3.3%	2.7%	4.2%
	GEORGIA	3.3%	1.5%	7.1%
	OHIO	3.3%	1.6%	6.8%
	SOUTH CAROLINA	3.3%	1.8%	5.7%
36	HAWAII	3.0%	2.4%	3.9%
	RHODE ISLAND	3.0%	2.0%	4.6%
38	VIRGINIA	2.8%	1.9%	4.0%
39	DELAWARE	2.7%	1.9%	3.9%
40	ILLINOIS	2.5%	1.8%	3.4%
41	UTAH	1.9%	1.4%	2.7%
42	MICHIGAN	1.7%	1.4%	2.1%
43	CONNECTICUT	1.3%	0.8%	2.3%

Mississippi ranks 4th in the prevalence of current smoking among public high school students (43 states administered the YRBSS in 2021). State rankings, however, should be interpreted with caution. Rank differences do not necessarily reflect meaningful differences between states.

**Source |** 2021 Youth Risk Behavior Surveillance System, Centers for Disease Control and Prevention

# CURRENT SMOKING

CIGARETTE SMOKING AMONG ADULTS: 2023

RANK	STATE	PREVALENCE	LOWER CI	UPPER CI
1	WEST VIRGINIA	20.4%	18.8%	22.0%
2	TENNESSEE	17.0%	15.5%	18.4%
3	OKLAHOMA	15.8%	14.7%	17.0%
4	LOUISIANA	15.7%	14.4%	17.0%
5	MISSISSIPPI	15.6%	14.1%	17.2%
6	ALASKA	15.3%	14.0%	16.7%
	MISSOURI	15.3%	14.1%	16.5%
8	SOUTH DAKOTA	15.2%	12.9%	17.6%
9	ARKANSAS	15.0%	13.7%	16.3%
	OHIO	15.0%	14.0%	15.9%
11	INDIANA	14.5%	13.6%	15.3%
12	ALABAMA	14.2%	12.8%	15.6%
	NEVADA	14.2%	11.5%	16.9%
14	MAINE	14.0%	13.0%	15.0%
	WYOMING	14.0%	12.6%	15.4%
16	KANSAS	13.9%	12.9%	14.9%
17	IOWA	13.7%	12.8%	14.6%
18	MICHIGAN	13.6%	12.6%	14.7%
19	NORTH DAKOTA	13.4%	12.1%	14.6%
20	NORTH CAROLINA	13.2%	11.6%	14.9%
21	MONTANA	12.4%	11.3%	13.4%
22	MINNESOTA	12.2%	11.4%	13.0%
	NEW MEXICO	12.2%	10.4%	14.0%
24	NEBRASKA	12.1%	11.3%	12.9%
	SOUTH CAROLINA	12.1%	11.1%	13.1%
26	GEORGIA	12.0%	10.9%	13.1%
	WISCONSIN	12.0%	11.2%	12.8%
28	DELAWARE	11.4%	10.0%	12.7%
29	TEXAS	11.3%	10.1%	12.5%
	VERMONT	11.3%	10.1%	12.6%
31	VIRGINIA	10.9%	9.7%	12.0%
32	ILLINOIS	10.8%	9.5%	12.1%
33	OREGON	10.6%	9.6%	11.7%
34	FLORIDA	10.5%	9.4%	11.7%
35	IDAHO	10.4%	9.3%	11.4%
	NEW HAMPSHIRE	10.4%	9.2%	11.6%
37	COLORADO	10.2%	9.3%	11.0%
38	ARIZONA	10.0%	9.2%	10.8%
39	MASSACHUSETTS	9.8%	8.8%	10.8%
	WASHINGTON D.C.	9.8%	7.9%	11.6%
41	RHODE ISLAND	9.5%	8.4%	10.6%
42	NEW YORK	9.3%	8.6%	10.0%
43	MARYLAND	9.1%	8.4%	9.9%
	NEW JERSEY	9.1%	8.2%	10.0%
45	HAWAII	9.0%	8.1%	10.0%
	WASHINGTON	9.0%	8.5%	9.5%
47	CALIFORNIA	8.5%	7.8%	9.2%
48	CONNECTICUT	8.4%	7.5%	9.3%
49	UTAH	6.0%	5.3%	6.6%

Mississippi ranks 5th among the 50 states and Washington D.C. in the prevalence of current smoking among adults. State rankings, however, should be interpreted with caution. Rank differences do not necessarily reflect meaningful differences between states.

NOTE: Kentucky and Pennsylvania are not included due to lack of sufficient data.

**Source** | 2023 Behavioral Risk Factor Surveillance System, Centers for Disease Control and Prevention





# PER CAPITA CONSUMPTION

TAX BURDEN REPORT: 2023



The Tax Burden on Tobacco is published yearly and details tobacco revenue and industry statistics. Per capita consumption rates are available for each state from 1955-2023. In 1955, per capita consumption was substantially lower in Mississippi than in the U.S. However, consumption increased until the early 1980s and began to approximate that of the U.S. as a whole.

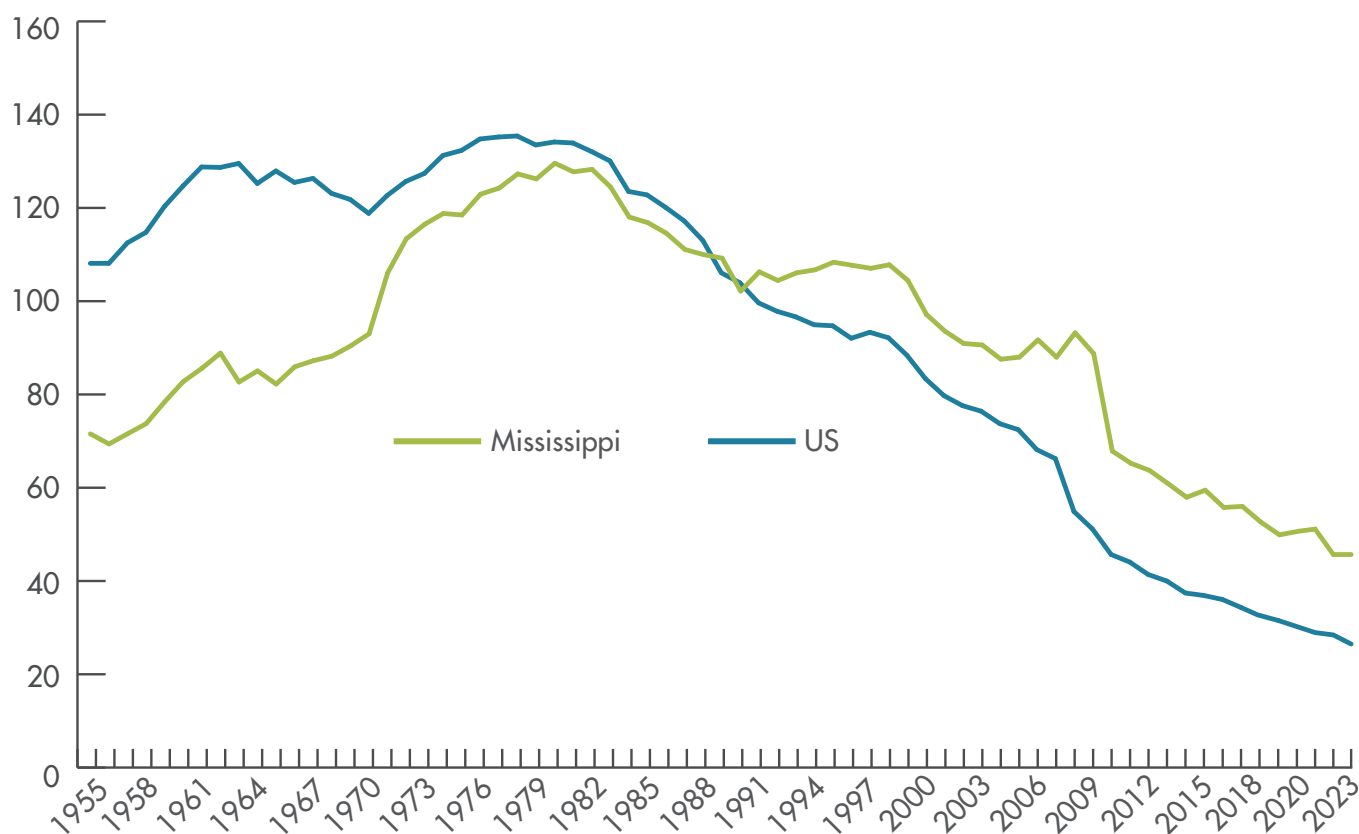
By the mid 1980s, per capita consumption was decreasing for both Mississippi and the U.S., but the rate of decrease was greater in the U.S. In 2023, per capita consumption (46.3 packs per adult) in Mississippi was substantially higher than in the U.S. (27.9 packs per adult).

**Source** | *Tax Burden on Tobacco, 2023*

RANK	STATE	PER CAPITA CONSUMPTION
1	NEW HAMPSHIRE	75.1
2	WEST VIRGINIA	67.1
3	MISSOURI	62.4
4	KENTUCKY	61.4
5	INDIANA	48.3
6	NORTH DAKOTA	46.9
7	MISSISSIPPI	46.3
8	NORTH CAROLINA	45.1
9	TENNESSEE	44.1
10	DELAWARE	43.2
11	ALABAMA	41.8
12	LOUISIANA	41.5
13	SOUTH CAROLINA	40.5
14	OKLAHOMA	40.2
15	ARKANSAS	39.9
16	MAINE	39.0
17	OHIO	38.4
18	WYOMING	38.2
19	VIRGINIA	37.0
20	GEORGIA	36.3
21	IOWA	35.3
22	NEBRASKA	33.0
23	MICHIGAN	32.4
24	SOUTH DAKOTA	30.8
25	WISCONSIN	30.2
26	MONTANA	30.1
27	FLORIDA	29.8
28	PENNSYLVANIA	29.0
29	IDAHO	27.0
30	RHODE ISLAND	26.7
31	VERMONT	26.5
32	KANSAS	26.3
33	ALASKA	25.7
34	NEVADA	25.2
35	OREGON	23.3
36	TEXAS	22.9
37	COLORADO	21.2
38	MINNESOTA	20.6
39	NEW JERSEY	19.3
40	ILLINOIS	19.2
41	NEW MEXICO	18.4
42	CONNECTICUT	17.7
43	ARIZONA	17.3
44	MARYLAND	17.0
45	HAWAII	16.7
46	MASSACHUSETTS	13.9
47	UTAH	12.8
48	CALIFORNIA	11.9
49	WASHINGTON	11.8
50	NEW YORK	8.8
51	WASHINGTON D.C.	3.1

# PER CAPITA CONSUMPTION

TAX BURDEN REPORT: 2023



The Tax Burden Report on Tobacco is published yearly and details tobacco revenue and industry statistics. Per capita consumption rates are available for each state from 1955-2023. The vertical axis represents per capita consumption. Mississippi initiated our tobacco control programs in 1998.



# STATE CIGARETTE EXCISE TAX

RATES & RANKINGS: 2024



Mississippi ranks 39th, with 38 states placing a higher state tax on cigarettes. Moreover, the 68 cent tax in Mississippi is substantially lower than the average state cigarette tax of \$1.96.

**Source |** *State Cigarette Excise Tax Rates and Rankings Campaign for Tobacco-Free Kids, 2024*

RANK	STATE	CIGARETTE TAX
1	NEW YORK	\$5.35
2	MARYLAND	\$5.00
3	CONNECTICUT	\$4.35
4	RHODE ISLAND	\$4.25
5	MASSACHUSETTS	\$3.51
6	OREGON	\$3.33
7	HAWAII	\$3.20
8	VERMONT	\$3.08
9	MINNESOTA	\$3.04
10	WASHINGTON	\$3.025
11	ILLINOIS	\$2.98
12	CALIFORNIA	\$2.87
13	NEW JERSEY	\$2.70
14	PENNSYLVANIA	\$2.60
15	WISCONSIN	\$2.52
16	COLORADO	\$2.24
17	DELAWARE	\$2.10
18	OKLAHOMA	\$2.03
19	NEW MEXICO	\$2.00
	MICHIGAN	\$2.00
	MAINE	\$2.00
	ARIZONA	\$2.00
	ALASKA	\$2.00
24	NEVADA	\$1.80
25	NEW HAMPSHIRE	\$1.78
26	UTAH	\$1.70
	MONTANA	\$1.70
28	OHIO	\$1.60
29	SOUTH DAKOTA	\$1.53
30	TEXAS	\$1.41
31	IOWA	\$1.36
32	FLORIDA	\$1.339
33	KANSAS	\$1.29
34	WEST VIRGINIA	\$1.20
35	ARKANSAS	\$1.15
36	KENTUCKY	\$1.10
37	LOUISIANA	\$1.08
38	INDIANA	\$0.995
39	MISSISSIPPI	\$0.68
40	ALABAMA	\$0.675
41	NEBRASKA	\$0.64
42	TENNESSEE	\$0.62
43	WYOMING	\$0.60
	VIRGINIA	\$0.60
45	SOUTH CAROLINA	\$0.57
	IDAHO	\$0.57
47	NORTH CAROLINA	\$0.45
48	NORTH DAKOTA	\$0.44
49	GEORGIA	\$0.37
50	MISSOURI	\$0.17

# CONTACT INFORMATION



**ROBERT MCMILLEN, PH.D.**  
robert.mcmillen@ssrc.msstate.edu



**MISSISSIPPI TOBACCO DATA**  
mstobaccodata.org



**SOCIAL SCIENCE RESEARCH CENTER**  
ssrc.msstate.edu

**MISSISSIPPI STATE UNIVERSITY**  
msstate.edu



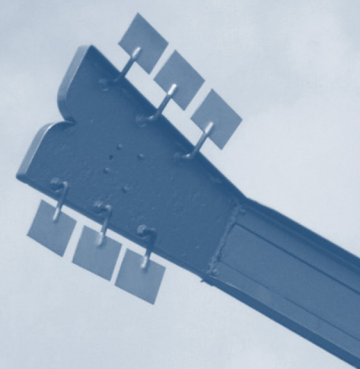
One Research Blvd., Suite 103  
Starkville, MS 39759



P: 662.325.7127  
F: 662.325.7966

MISSISSIPPI STATE UNIVERSITY DOES NOT DISCRIMINATE ON THE BASIS OF RACE, COLOR, RELIGION, NATIONAL ORIGIN, SEX, AGE, DISABILITY, OR VETERAN STATUS. THIS REPORT IS FUNDED BY A GRANT OF THE MISSISSIPPI STATE DEPARTMENT OF HEALTH.





**MISSISSIPPI STATE UNIVERSITY™**  
SOCIAL SCIENCE RESEARCH CENTER