

2023

# THE MISSISSIPPI YOUTH TOBACCO SURVEY

1998-2022

MISSISSIPPI TOBACCO DATA



# table of contents

- ▶ table of contents...page(1)
- ▶ key outcomes {electronic cigarettes}...page(2)
- ▶ key outcomes {cigarettes}...page(3)
- ▶ key outcomes {smokeless tobacco & cigars}...page(4)
- ▶ {electronic cigarette use data}...pages(5-7)
  - ▶ current electronic cigarette use...page(5)
  - ▶ ever tried an electronic cigarette...page(6)
  - ▶ frequent electronic cigarette use...page(7)
- ▶ {cigarette smoking data}...pages(8-10)
  - ▶ current cigarette smoking...page (8)
  - ▶ ever tried a cigarette...page (9)
  - ▶ frequent cigarette smoking...page (10)
- ▶ {smokeless tobacco use data}...pages(11-13)
  - ▶ current smokeless tobacco use...page(11)
  - ▶ ever tried smokeless tobacco...page(12)
  - ▶ frequent smokeless tobacco use...page(13)
- ▶ {cigar smoking data}...pages(14-16)
  - ▶ current cigar smoking...page(14)
  - ▶ ever tried a cigar...page(15)
  - ▶ frequent cigar smoking...page(16)
- ▶ appendix {comparison charts}...pages(17-20)
  - ▶ change in electronic cigarette use...page(17)
  - ▶ change in cigarette smoking...page(18)
  - ▶ change in smokeless tobacco use...page(19)
  - ▶ change in cigar smoking...page(20)
- ▶ appendix {electronic cigarettes}...pages(21-23)
- ▶ appendix {cigarettes}...pages(24-29)
- ▶ appendix {smokeless tobacco}...pages(30-35)
- ▶ appendix {cigars}...pages(36-41)
- ▶ methods + contact us...page(42)

THIS REPORT WAS PRODUCED BY SCIENTISTS AT THE SOCIAL SCIENCE RESEARCH CENTER OF MISSISSIPPI STATE UNIVERSITY. THIS PROJECT IS FUNDED BY A GRANT OF THE MISSISSIPPI STATE DEPARTMENT OF HEALTH. ANY OPINIONS IMPLIED OR EXPRESSED HERE ARE THOSE OF THE AUTHORS AND DO NOT NECESSARILY REFLECT THOSE OF THE MISSISSIPPI STATE DEPARTMENT OF HEALTH OR OF MISSISSIPPI STATE UNIVERSITY.




## {electronic cigarettes}

- \* We added e-cigarette use questions to the YTS in 2010. Use among youth was very low until 2014. From 2014 through 2017, the prevalence of past 30-day e-cigarette use remained at approximately 10%. Coinciding with the popularity of pod-based e-cigarettes, e-cigarette use among youth almost doubled from 2017 to 2018, and has remained high since 2019.
- \* Current e-cigarette use among public middle school students has increased by 1267% since 2010, leading to 7,923 more young e-cigarette users.
- \* Current e-cigarette use among public high school students has increased by 1200% since 2010, leading to 18,551 more young e-cigarette users.



## key outcomes

- 
- \* The prevalence of having ever tried using e-cigarettes has increased by 1789% since 2010, leading to 16,783 more middle school students who have tried using e-cigarettes.
  - \* The prevalence of having ever tried using e-cigarettes has increased by 1863% since 2010, leading to 45,605 more high school students who have tried using e-cigarettes.
  - \* Frequent e-cigarette use has increased by 338% since 2014, leading to 6,957 more high school students who have used an e-cigarette on at least 20 of the past 30 days.





## key outcomes

## {cigarettes}

- \* Tobacco use among Mississippi youth has decreased substantially since statewide tobacco control programs were implemented in 1999.
  - \* Current smoking among public middle school students has decreased by 92% since 1998, leading to 19,702 fewer young smokers.
  - \* Current smoking among public high school students has decreased by 92% since 1998, leading to 36,072 fewer young smokers.
  - \* The prevalence of having ever tried smoking has decreased by 83% since 1998, leading to 47,119 fewer middle school students who have tried smoking.
- 
- \* The prevalence of having ever tried smoking has decreased by 77% since 1998, leading to 75,236 fewer high school students who have tried smoking.
  - \* Frequent smoking has decreased by 96% since 1998, leading to 5,212 fewer middle school students who have smoked a cigarette on at least 20 of the past 30 days.
  - \* Frequent smoking has decreased by 99% since 1998, leading to 18,165 fewer high school students who have smoked a cigarette on at least 20 of the past 30 days.





## { smokeless tobacco }

- \* Current smokeless tobacco (SLT) use among public middle school students has decreased by 86% since 1998, leading to 8,652 fewer young SLT users.
- \* Current smokeless tobacco (SLT) use among public high school students has decreased by 79% since 1998, leading to 9,533 fewer young SLT users.
- \* The prevalence of having ever tried SLT has decreased by 73% since 1998, leading to 13,760 fewer middle school students who have tried SLT.
- \* The prevalence of having ever tried SLT has decreased by 78% since 1998, leading to 26,410 fewer high school students who have tried SLT.
- \* Frequent SLT use has decreased by 95% since 1998, leading to 2,189 fewer middle school students who have used SLT on at least 20 of the past 30 days.
- \* Frequent SLT use has decreased by 95% since 1998, leading to 4,509 fewer high school students who have used SLT on at least 20 of the past 30 days.

## { cigars }

- \* Current cigar smoking among public middle school students has decreased by 88% since 1998, leading to 15,116 fewer young cigar smokers.

## key outcomes

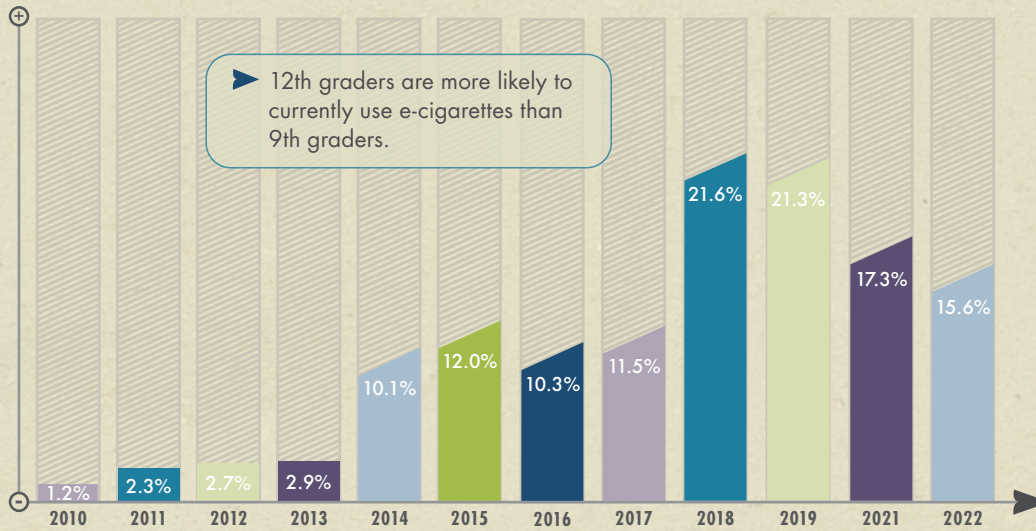
- \* Current cigar smoking among public high school students has decreased by 72% since 1998, leading to 20,613 fewer young cigar smokers.
- \* The prevalence of having ever tried cigar smoking has decreased by 79% since 1998, leading to 26,791 fewer middle school students who have tried cigar smoking.
- \* The prevalence of having ever tried cigar smoking has decreased by 68% since 1998, leading to 46,250 fewer high school students who have tried cigar smoking.



# current electronic cigarette use

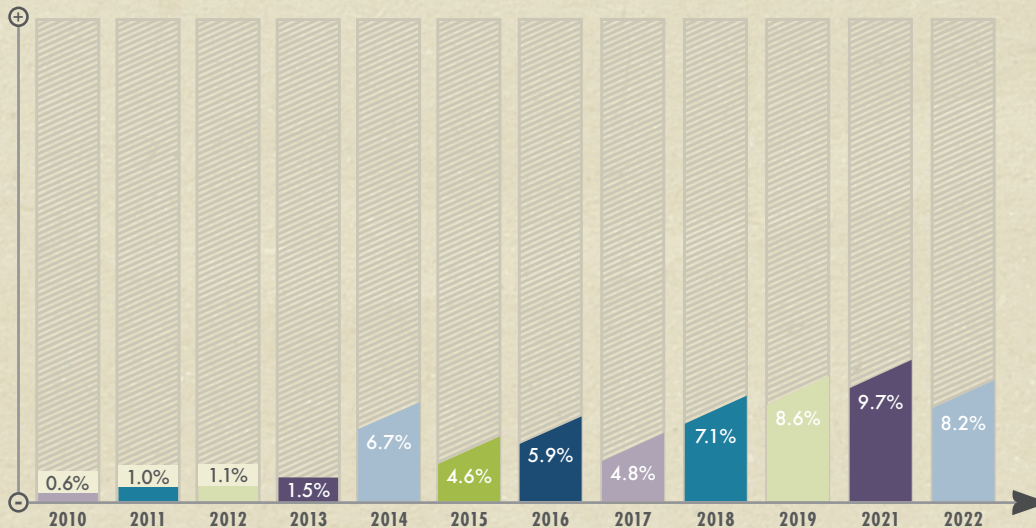
## MISSISSIPPI PUBLIC SCHOOLS

HIGH SCHOOLS {2010-2022}



- \* In 2022, **20,097 Mississippi public high school students** had used e-cigarettes on at least one of the past 30 days.
- \* The prevalence of current e-cigarette use has **increased by 1,200%** since 2010, leading to 18,551 more young e-cigarette users.
- \* In the past year, the prevalence of current e-cigarette use **has not changed significantly.**

MIDDLE SCHOOLS {2010-2022}



- \* In 2022, **8,548 Mississippi public middle school students** had used e-cigarettes on at least one of the past 30 days.
- \* The prevalence of current e-cigarette use has **increased by 1,267%** since 2010, leading to 7,923 more young e-cigarette users.
- \* In the past year, the prevalence of current e-cigarette use **has not changed significantly.**

▶ Significant Demographic Differences

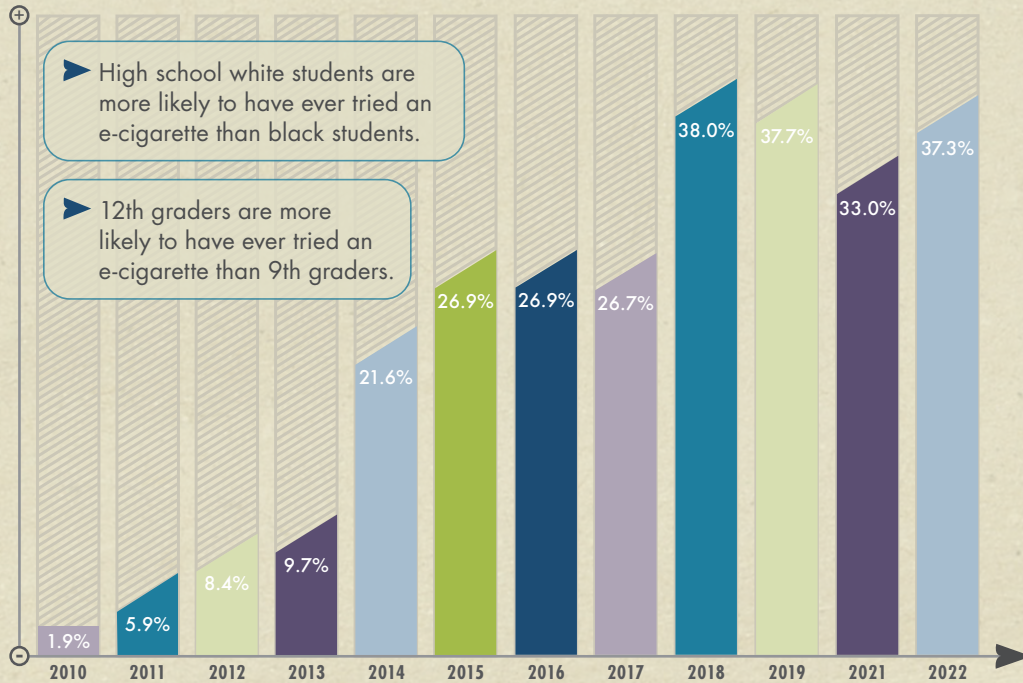
Changes between 2013 and 2014 in the wording and placement of questions about the use of e-cigarettes might have had an impact on reported use of these products.



# ever tried an electronic cigarette

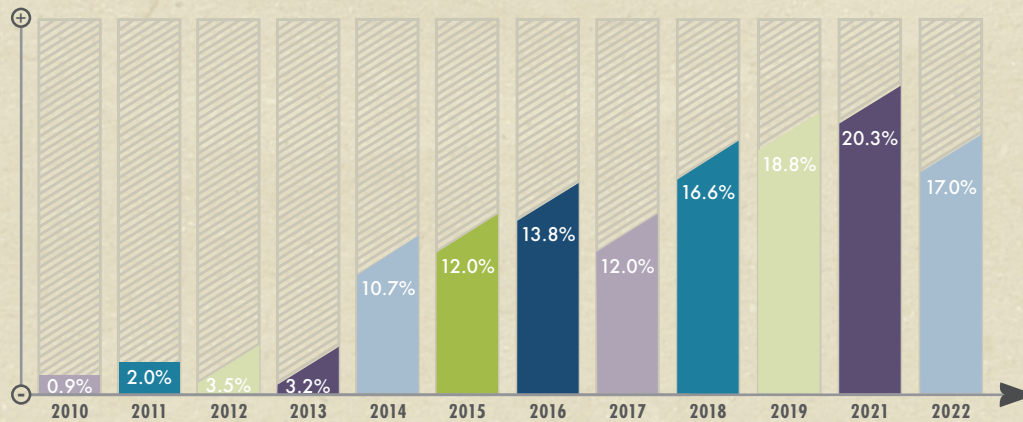
## MISSISSIPPI PUBLIC SCHOOLS

HIGH SCHOOLS {2010-2022}



- \* In 2022, **48,053 Mississippi public high school students** had tried at least one e-cigarette.
- \* The prevalence of having ever tried an e-cigarette has **increased by 1,863%** since 2010, leading to 45,605 more high school students who have tried using e-cigarettes.
- \* In the past year, the prevalence of having ever tried using e-cigarettes **has not changed significantly**.

MIDDLE SCHOOLS {2010-2022}



- \* In 2022, **17,722 Mississippi public middle school students** had tried at least one e-cigarette.
- \* The prevalence of having ever tried an e-cigarette has **increased by 1,789%** since 2010, leading to 16,783 more middle school students who have tried using e-cigarettes.
- \* In the past year, the prevalence of having ever tried using e-cigarettes **has not changed significantly**.

▶ Significant Demographic Differences

Changes between 2013 and 2014 in the wording and placement of questions about the use of e-cigarettes might have had an impact on reported use of these products.

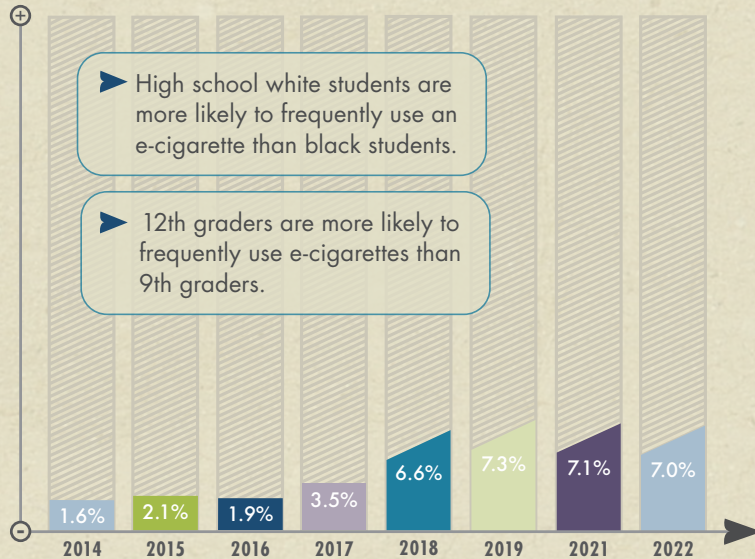




# frequent electronic cigarette use

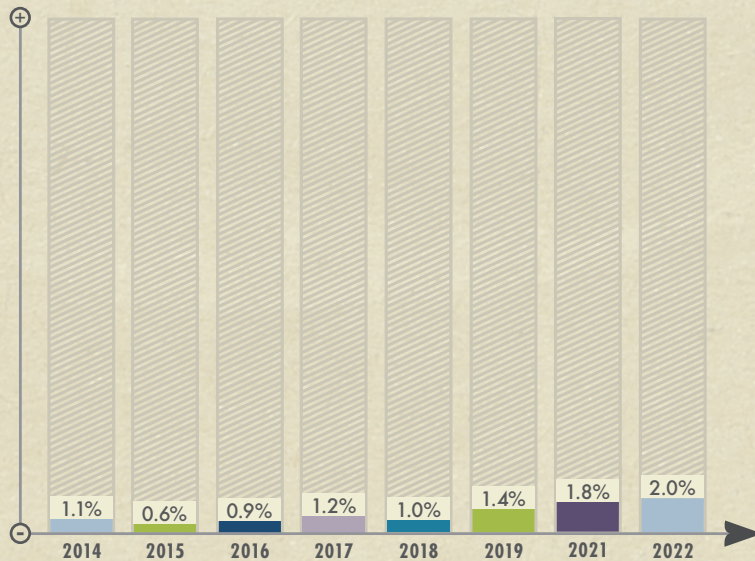
## MISSISSIPPI PUBLIC SCHOOLS

HIGH SCHOOLS {2014-2022}



- \* In 2022, *9,018 Mississippi public high school students* had used e-cigarettes on at least 20 of the past 30 days.
- \* The prevalence of frequent e-cigarette use has *increased by 338%* since 2014, leading to 6,957 more high school students who are frequent e-cigarette users.
- \* In the past year, the prevalence of frequent e-cigarette use *has not changed significantly*.

MIDDLE SCHOOLS {2014-2022}



- \* In 2022, *2,085 Mississippi public middle school students* had used e-cigarettes on at least 20 of the past 30 days.
- \* The prevalence of frequent e-cigarette use *has not changed significantly* since 2014.
- \* In the past year, the prevalence of frequent e-cigarette use *has not changed significantly*.

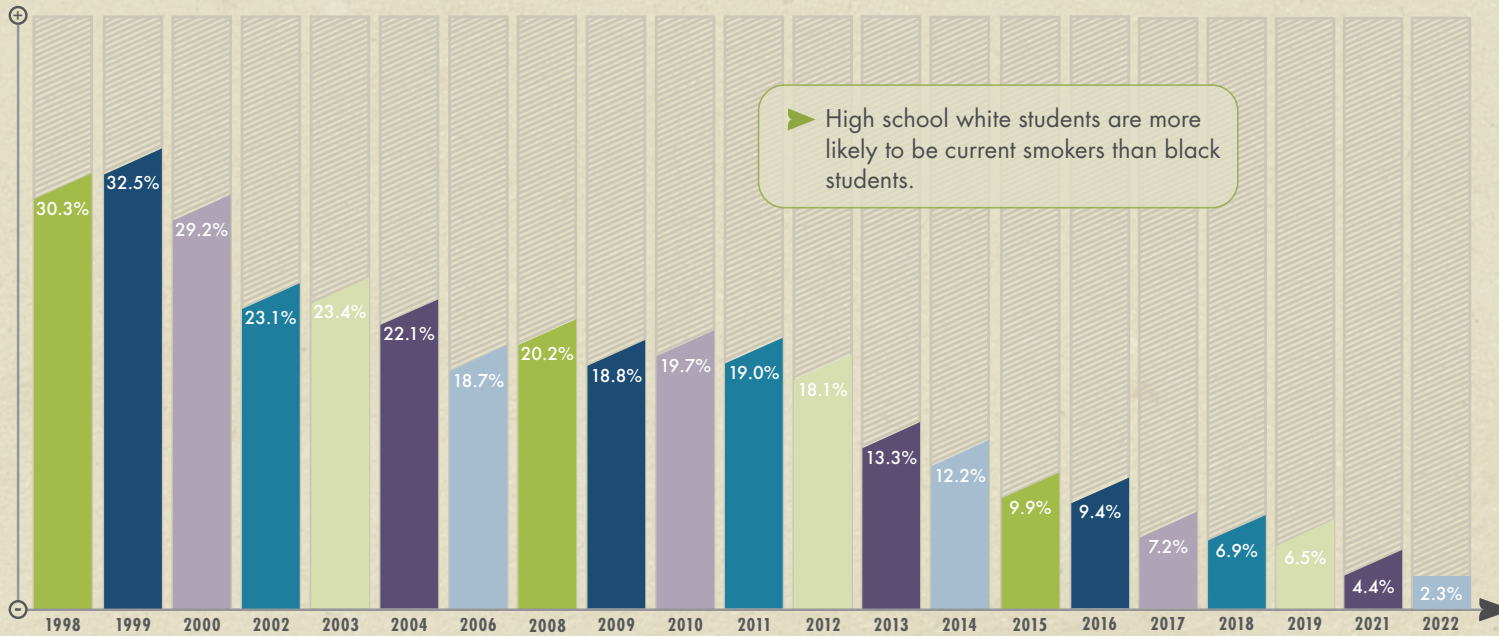
▶ Significant Demographic Differences



# current cigarette smoking

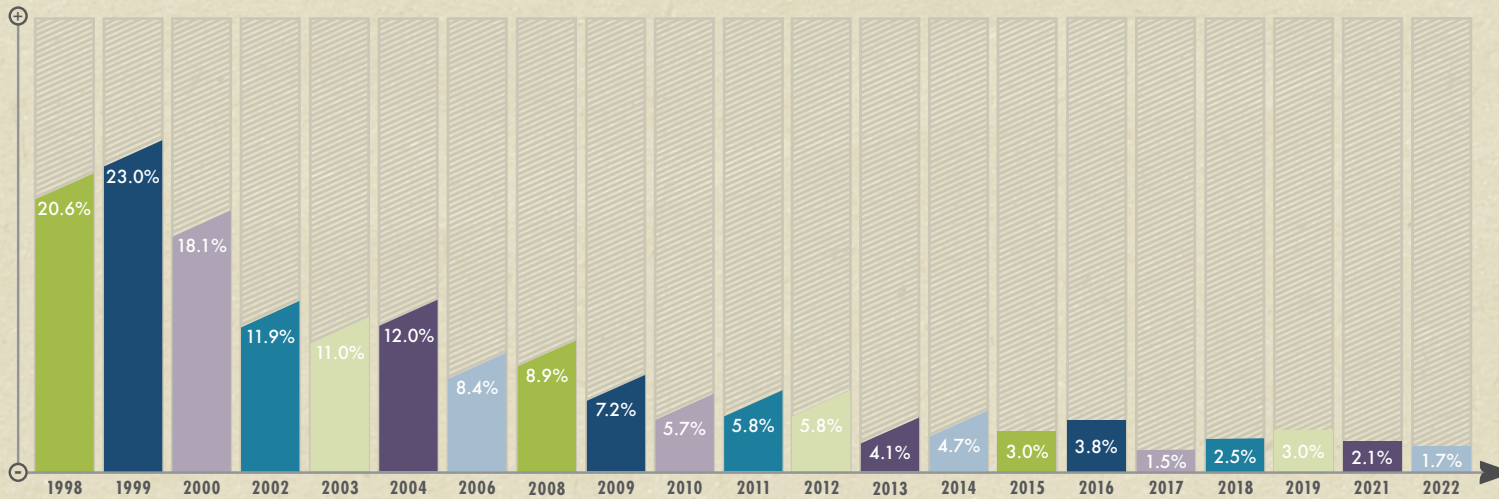
## MISSISSIPPI PUBLIC SCHOOLS

HIGH SCHOOLS



- \* In 2022, 2,963 *Mississippi public high school students* had smoked cigarettes on at least one of the past 30 days.
- \* The prevalence of current smoking has *decreased by 92%* since 1998, leading to 36,072 fewer young smokers.
- \* In the past year, the prevalence of current smoking *has changed significantly*.

MIDDLE SCHOOLS



- \* In 2022, 1,772 *Mississippi public middle school students* had smoked cigarettes on at least one of the past 30 days.
- \* The prevalence of current smoking has *decreased by 92%* since 1998, leading to 19,702 fewer young smokers.
- \* In the past year, the prevalence of current smoking *has not changed significantly*.

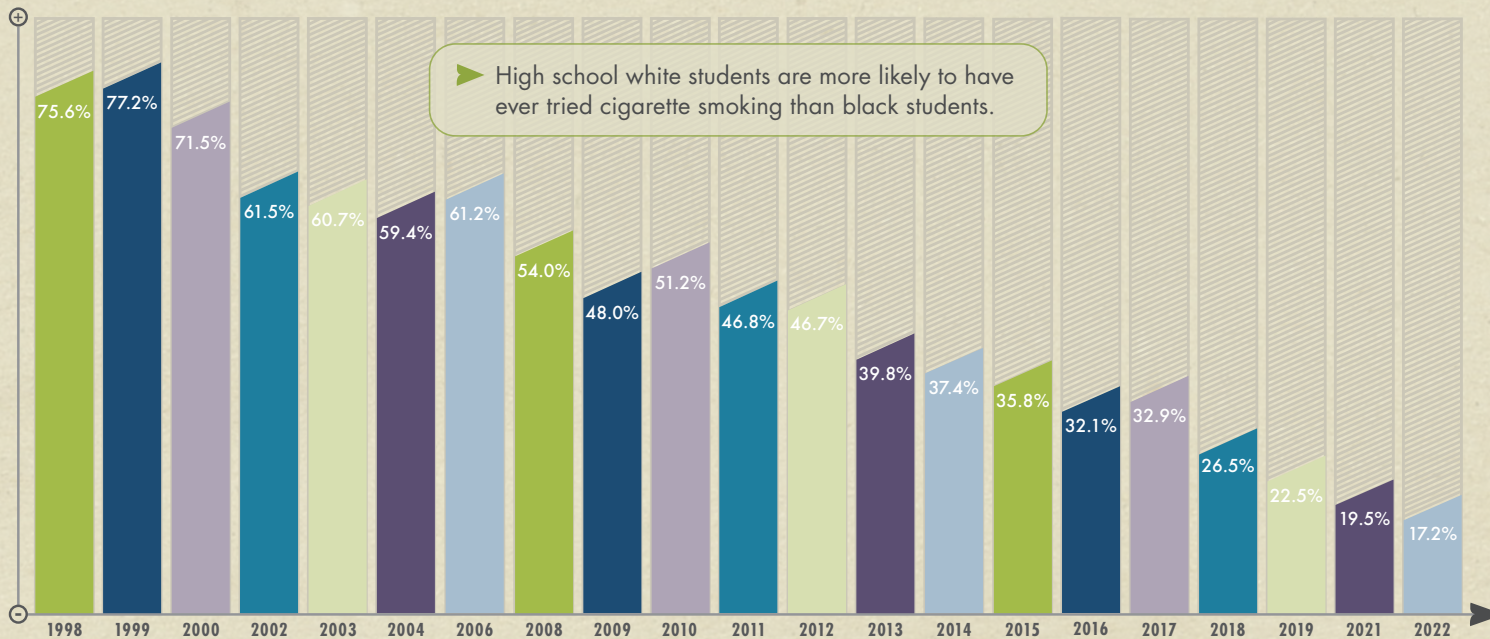
➤ Significant Demographic Differences



# ever tried a cigarette

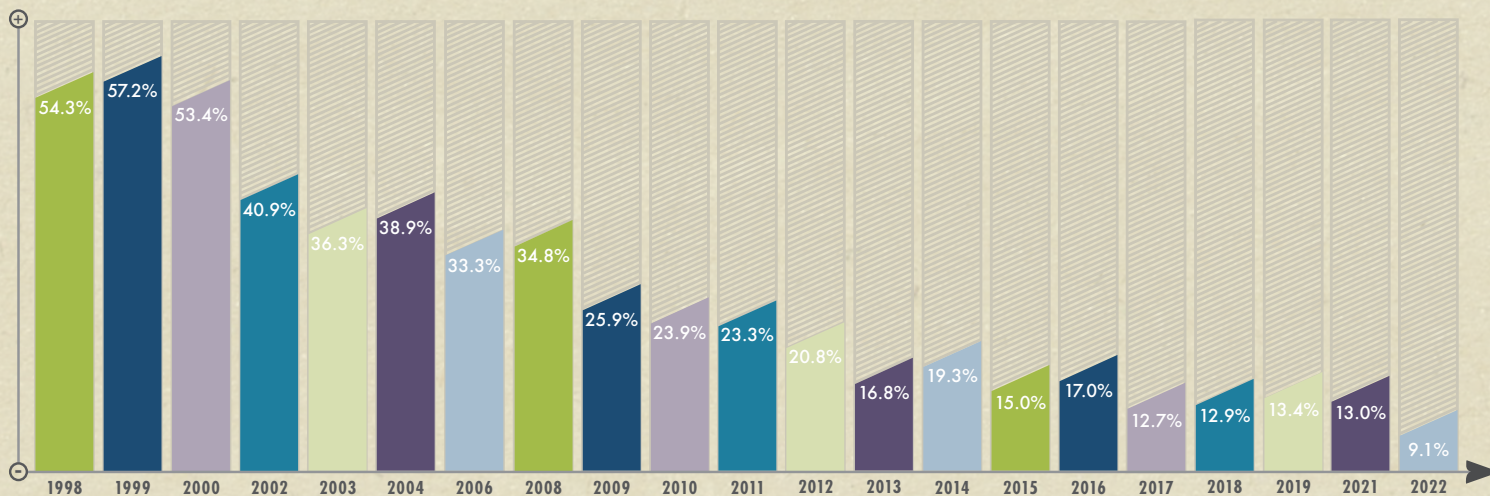
## MISSISSIPPI PUBLIC SCHOOLS

HIGH SCHOOLS



- \* In 2022, **22,159 Mississippi public high school students** had tried at least one cigarette.
- \* The prevalence of having ever tried a cigarette has **decreased by 77%** since 1998, leading to 75,236 fewer high school students who have tried smoking.
- \* In the past year, the prevalence of having ever tried smoking **has not changed significantly**.

MIDDLE SCHOOLS



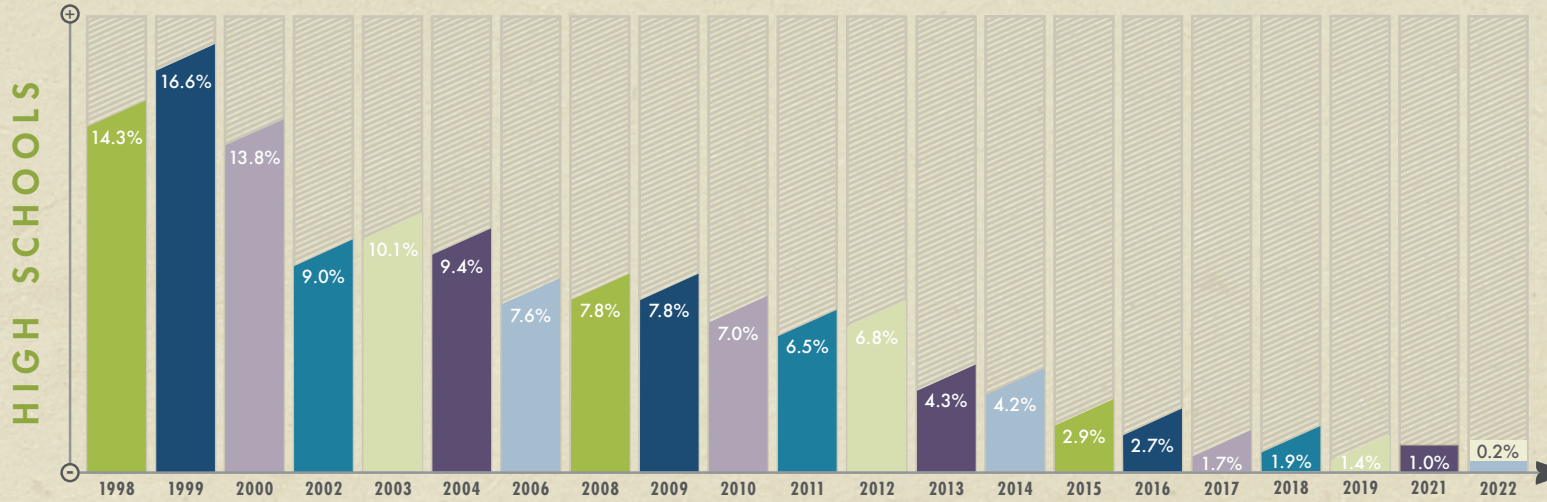
- \* In 2022, **9,486 Mississippi public middle school students** had tried at least one cigarette.
- \* The prevalence of having ever tried a cigarette has **decreased by 83%** since 1998, leading to 47,119 fewer middle school students who have tried smoking.
- \* In the past year, the prevalence of having ever tried smoking **has not changed significantly**.

Significant Demographic Differences

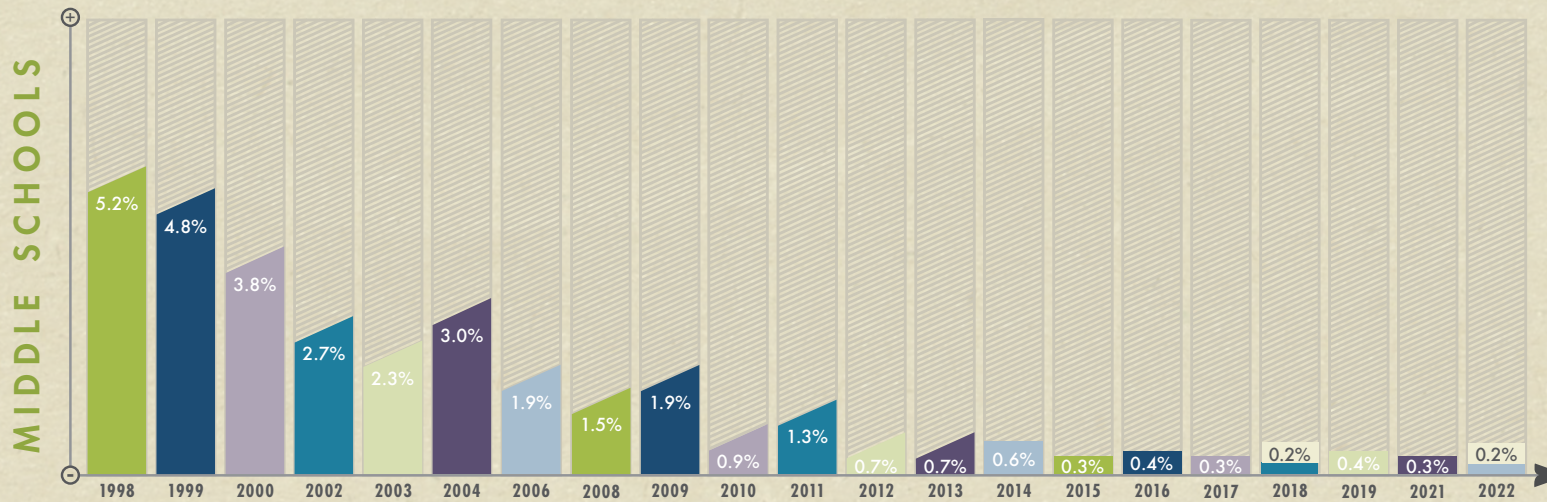


# frequent cigarette smoking

## MISSISSIPPI PUBLIC SCHOOLS



- \* In 2022, *258 Mississippi public high school students* had smoked cigarettes on at least 20 of the past 30 days.
- \* The prevalence of frequent smoking has *decreased by 99%* since 1998, leading to 18,165 fewer high school students who are frequent smokers.
- \* In the past year, the prevalence of frequent smoking *has changed significantly*.



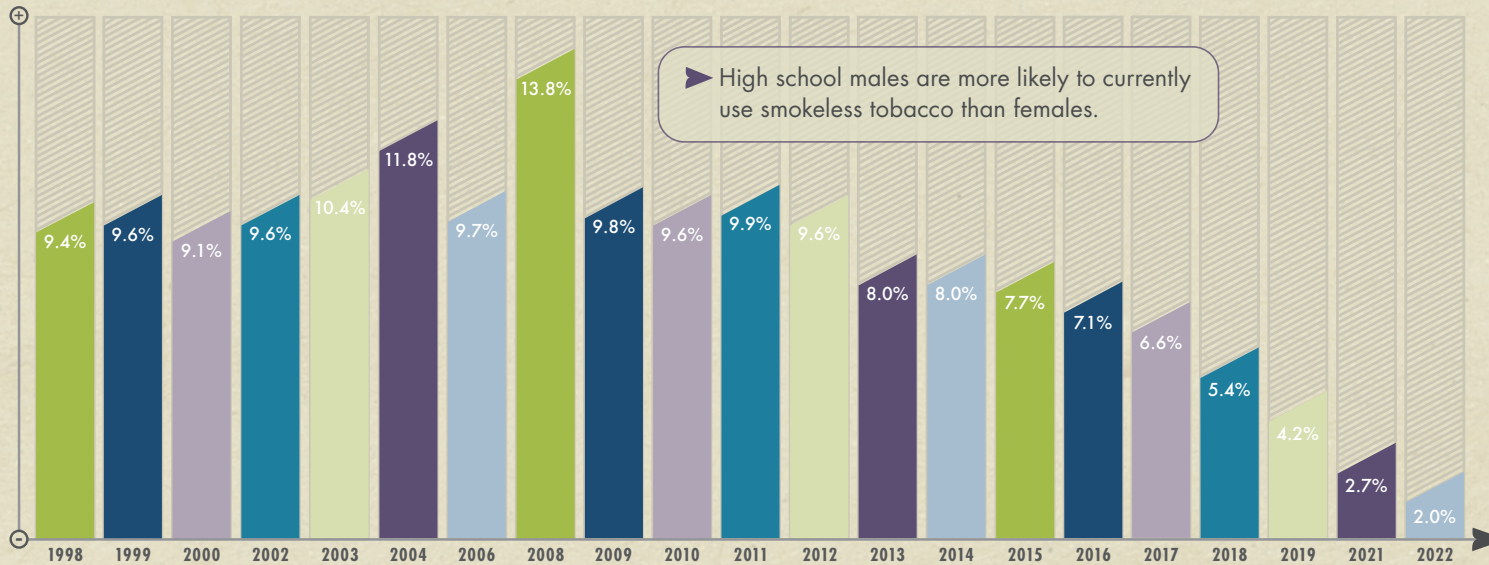
- \* In 2022, *208 Mississippi public middle school students* had smoked cigarettes on at least 20 of the past 30 days.
- \* The prevalence of frequent smoking has *decreased by 96%* since 1998, leading to 5,212 fewer middle school students who are frequent smokers.
- \* In the past year, the prevalence of frequent smoking *has not changed significantly*.



# current smokeless tobacco use

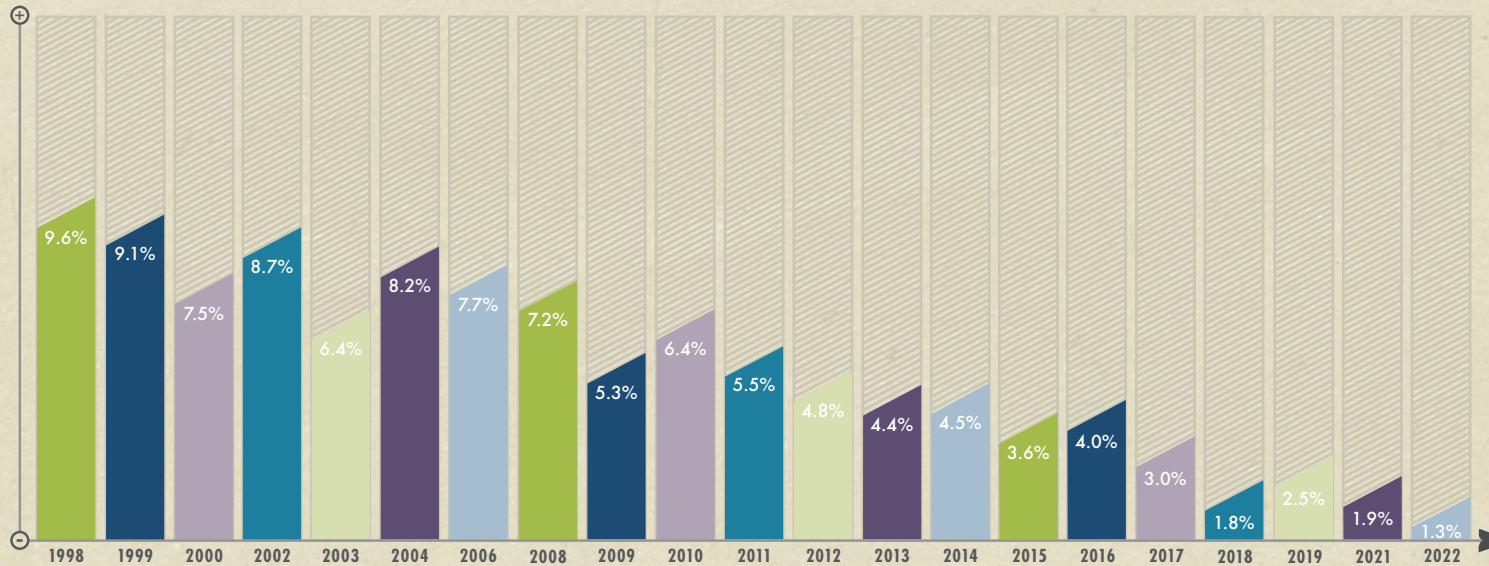
## MISSISSIPPI PUBLIC SCHOOLS

HIGH SCHOOLS



- \* In 2022, *2,577 Mississippi public high school students* had used SLT on at least one of the past 30 days.
- \* The prevalence of current SLT use has *decreased by 79%* since 1998, leading to 9,533 fewer young SLT users.
- \* In the past year, the prevalence of current SLT use *has not changed significantly*.

MIDDLE SCHOOLS



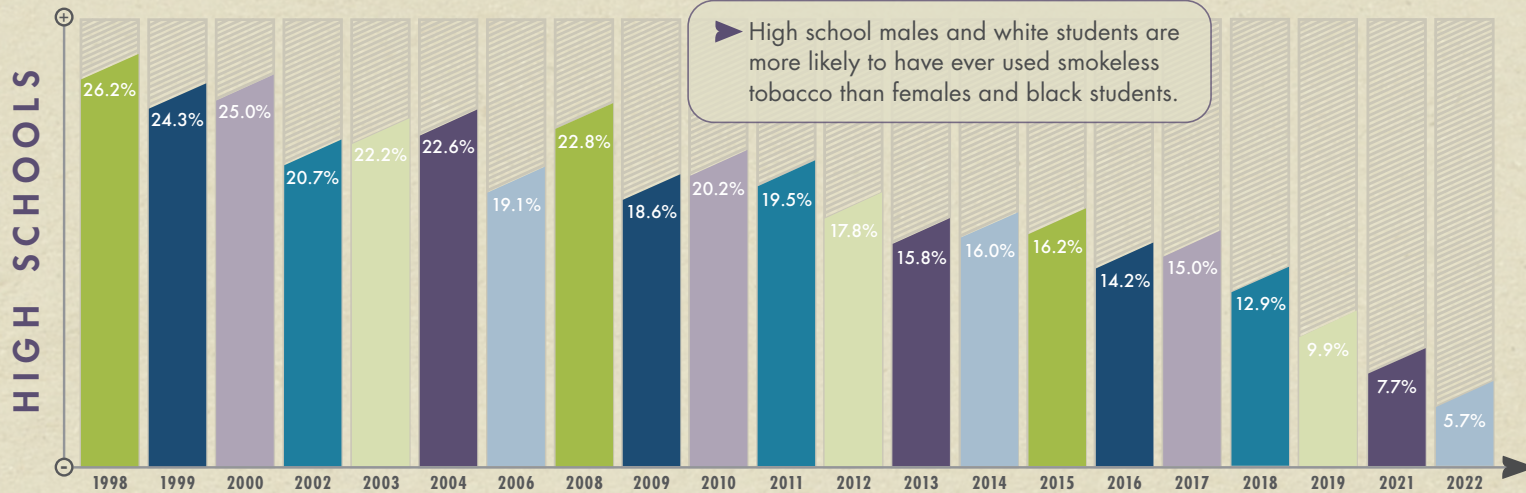
- \* In 2022, *1,355 Mississippi public middle school students* had used SLT on at least one of the past 30 days.
- \* The prevalence of current SLT use has *decreased by 86%* since 1998, leading to 8,652 fewer young SLT users.
- \* In the past year, the prevalence of current SLT use *has not changed significantly*.

► Significant Demographic Differences

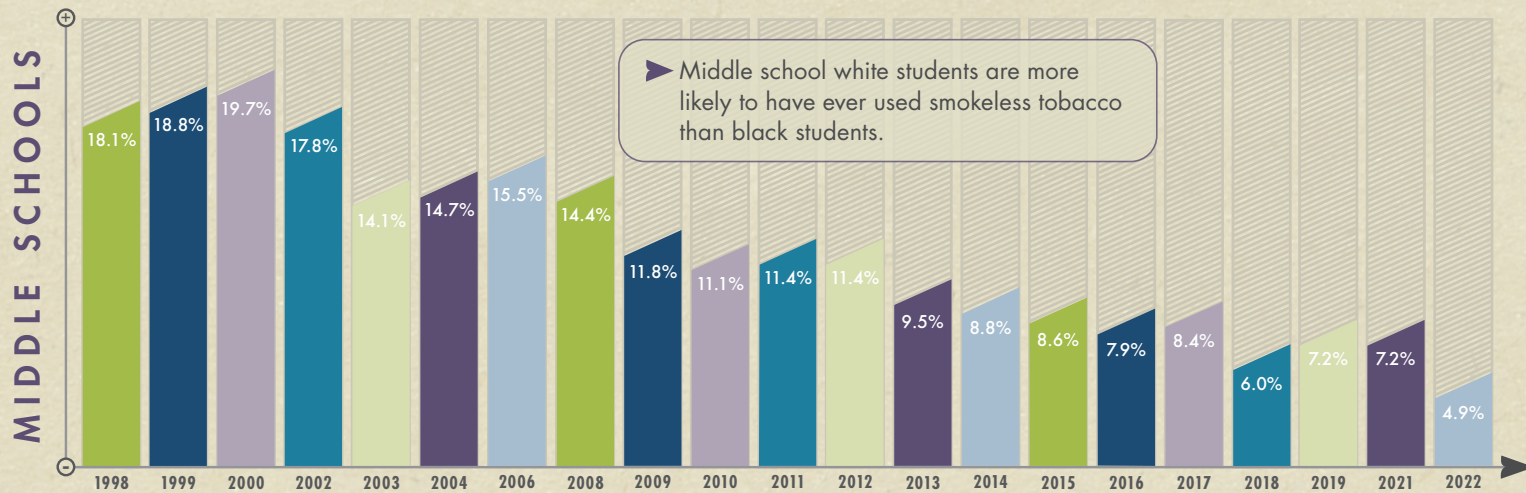


# ever tried smokeless tobacco

## MISSISSIPPI PUBLIC SCHOOLS



- \* In 2022, **7,343 Mississippi public high school students** had tried SLT at least one time.
- \* The prevalence of having ever tried SLT has **decreased by 78%** since 1998, leading to 26,410 fewer high school students who have tried SLT.
- \* In the past year, the prevalence of having ever tried SLT **has not changed significantly**.



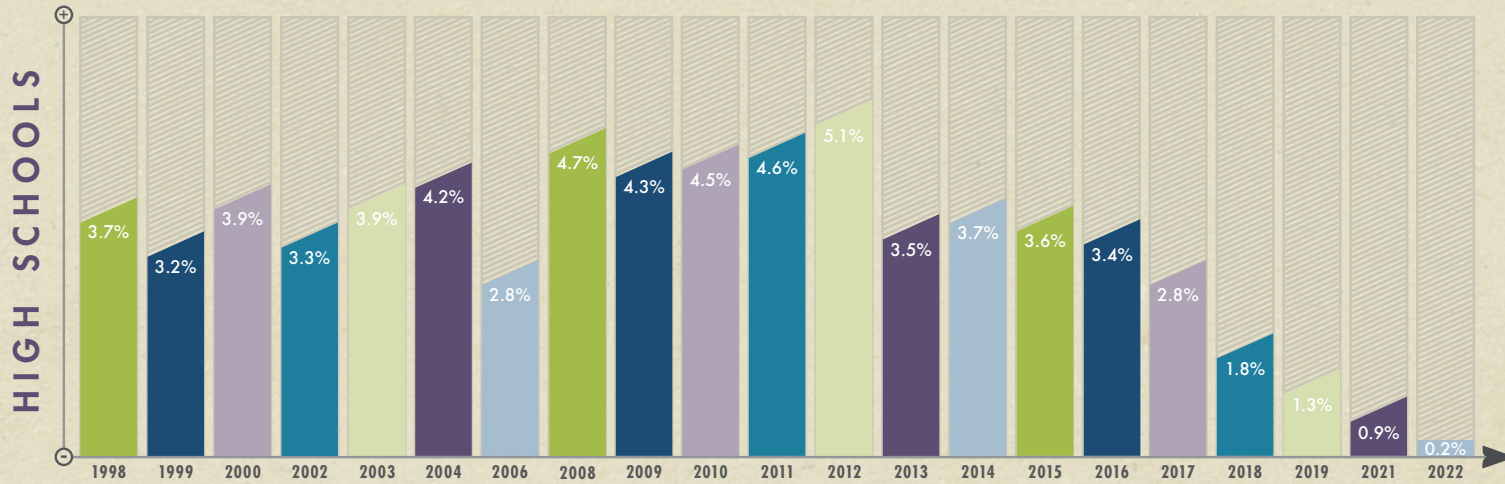
- \* In 2022, **5,108 Mississippi public middle school students** had tried SLT at least one time.
- \* The prevalence of having ever tried SLT has **decreased by 73%** since 1998, leading to 13,760 fewer middle school students who have tried SLT.
- \* In the past year, the prevalence of having ever tried SLT **has not changed significantly**.

► Significant Demographic Differences

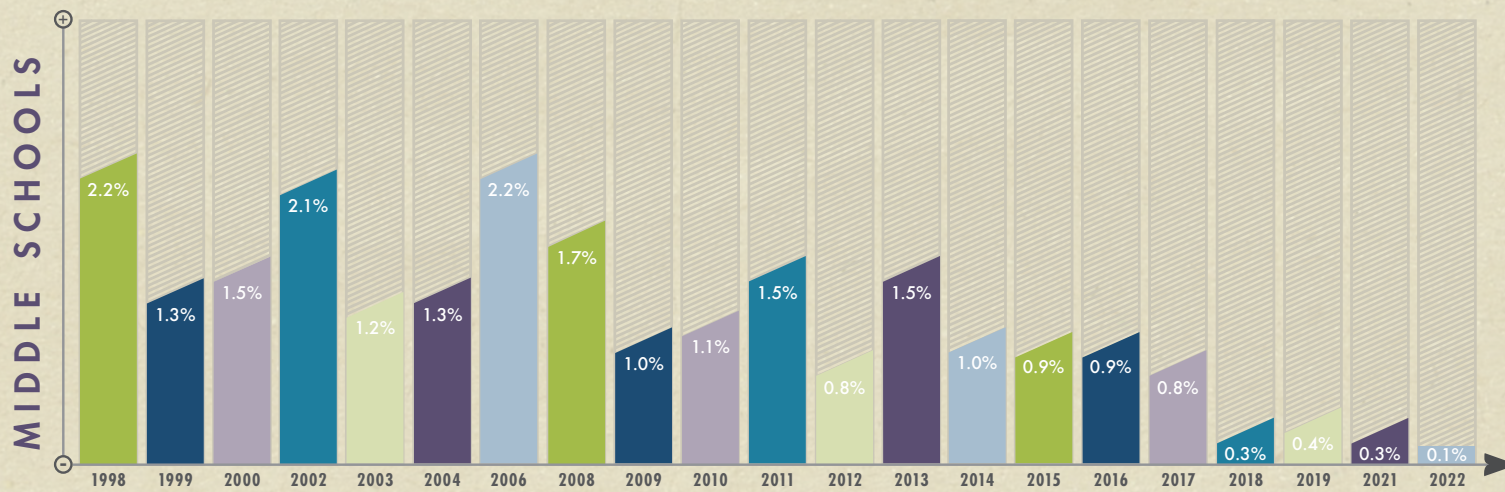


# frequent smokeless tobacco use

## MISSISSIPPI PUBLIC SCHOOLS



- \* In 2022, *258 Mississippi public high school students* had used SLT on at least 20 of the past 30 days.
- \* The prevalence of frequent SLT use has *decreased by 95%* since 1998, leading to 4,509 fewer high school students who are frequent SLT users.
- \* In the past year, the prevalence of frequent SLT use *has not changed significantly*.



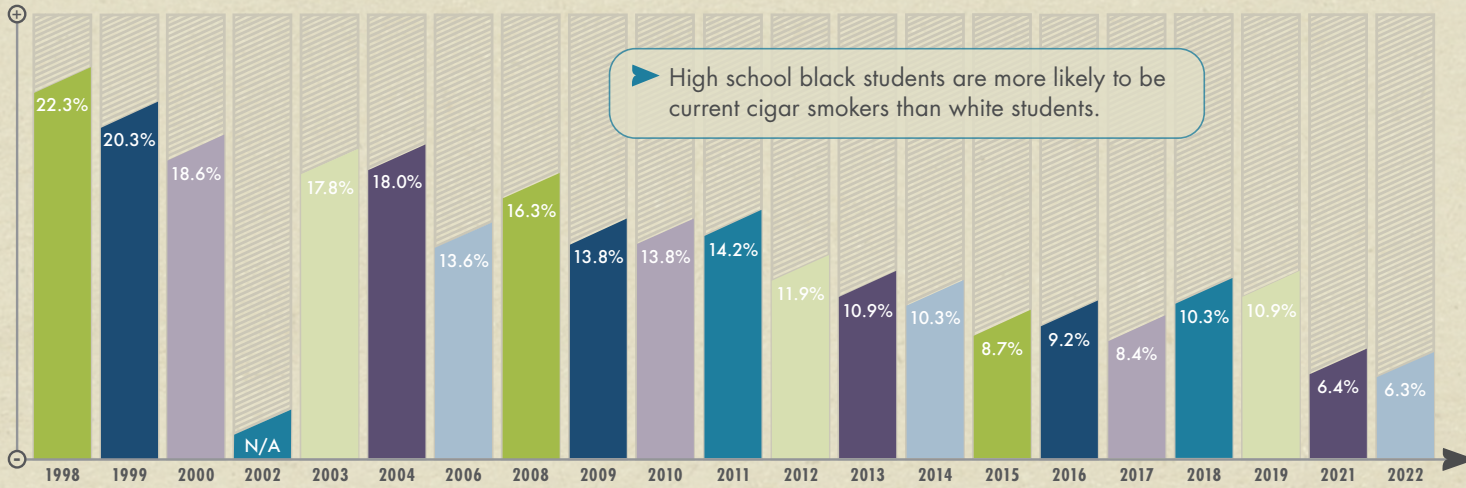
- \* In 2022, *104 Mississippi public middle school students* had used SLT on at least 20 of the past 30 days.
- \* The prevalence of frequent SLT use has *decreased by 95%* since 1998, leading to 2,189 fewer middle school students who are frequent SLT users.
- \* In the past year, the prevalence of frequent SLT use *has not changed significantly*.



# current cigar smoking

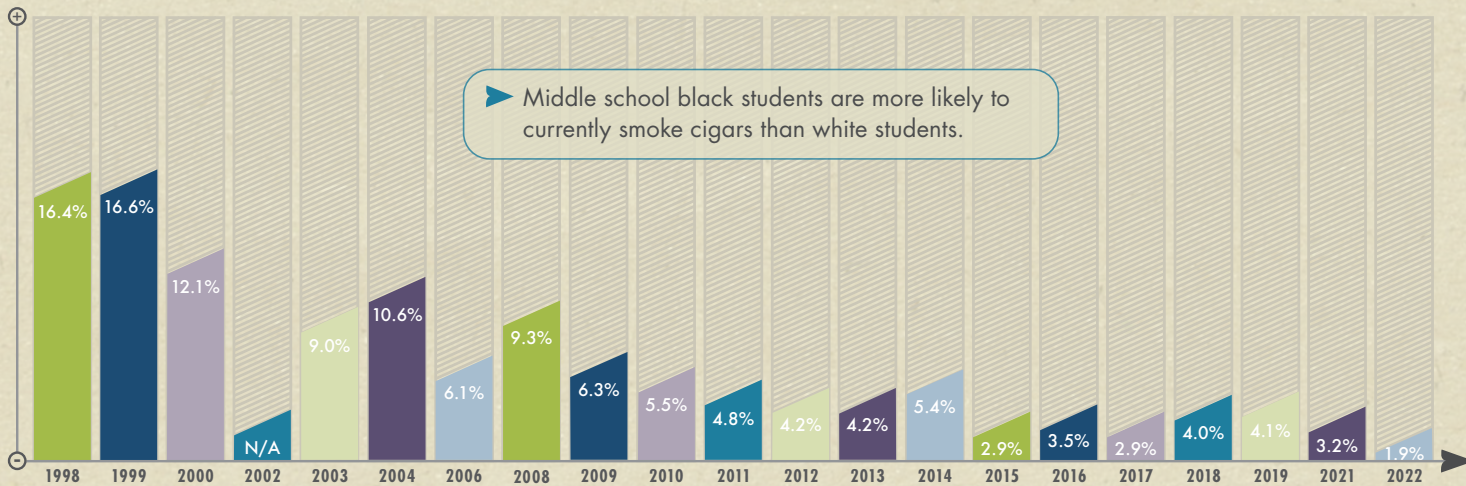
## MISSISSIPPI PUBLIC SCHOOLS

HIGH SCHOOLS



- \* In 2022, **8,116 Mississippi public high school students** had smoked cigars on at least one of the past 30 days.
- \* The prevalence of current cigar smoking has **decreased by 72%** since 1998, leading to 20,613 fewer young cigar smokers.
- \* In the past year, the prevalence of current cigar smoking **has not changed significantly**.

MIDDLE SCHOOLS



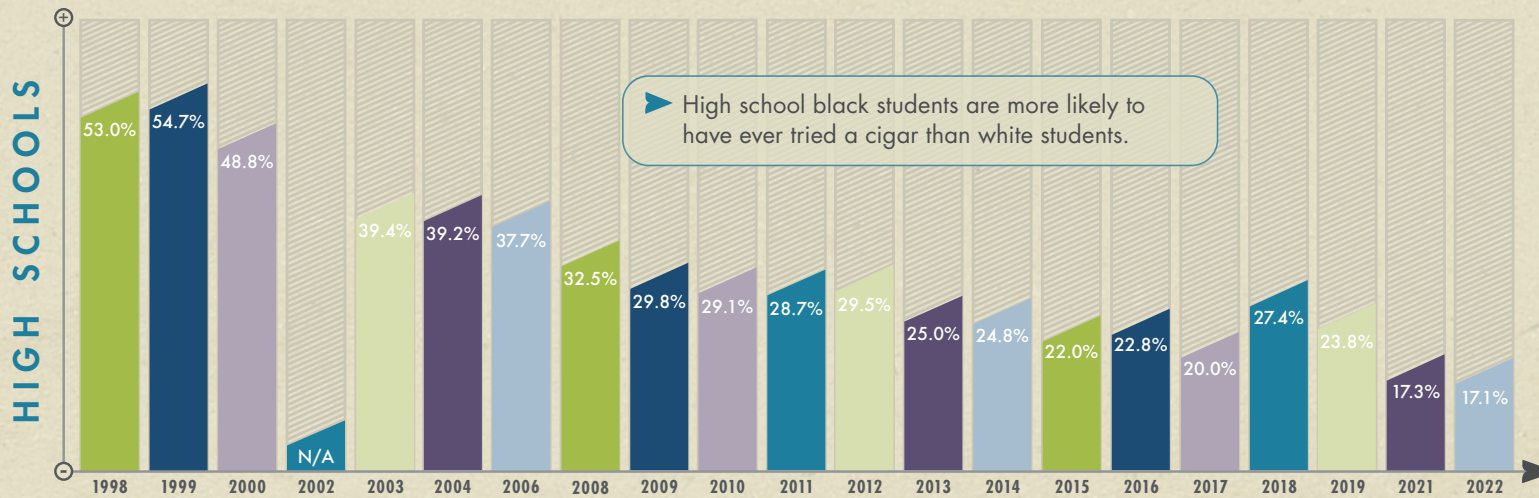
- \* In 2022, **1,981 Mississippi public middle school students** had smoked cigars on at least one of the past 30 days.
- \* The prevalence of current cigar smoking has **decreased by 88%** since 1998, leading to 15,116 fewer young cigar smokers.
- \* In the past year, the prevalence of current cigar smoking **has not changed significantly**.

► Significant Demographic Differences

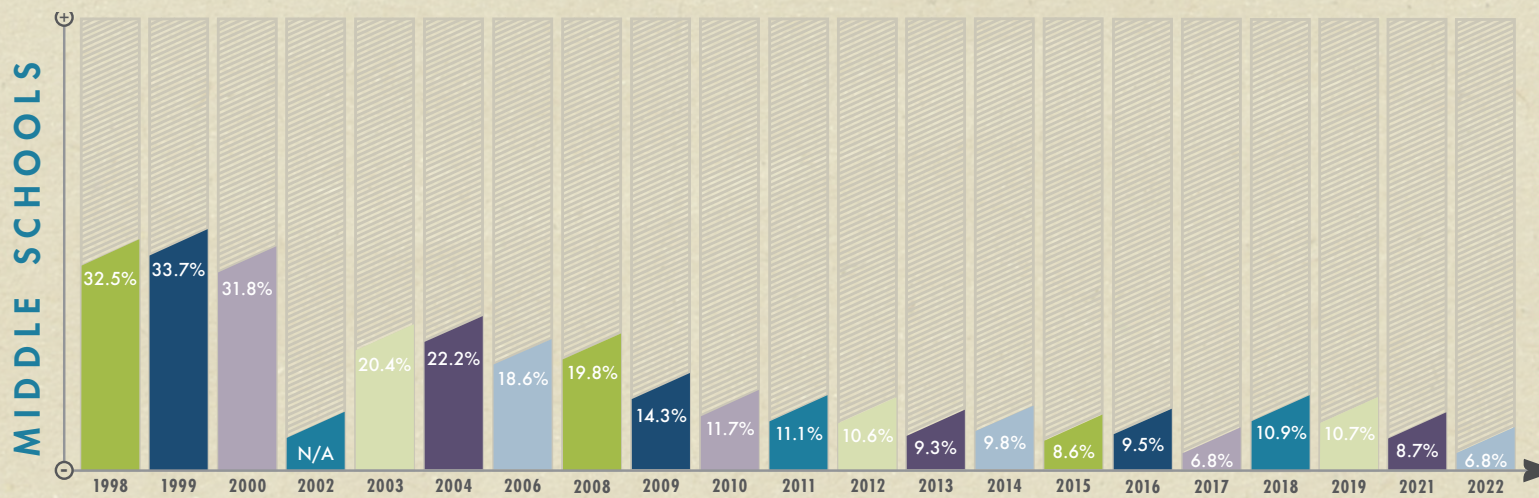


# ever tried a cigar

## MISSISSIPPI PUBLIC SCHOOLS



- \* In 2022, **22,030 Mississippi public high school students** had tried at least one cigar.
- \* The prevalence of having ever tried a cigar has **decreased by 68%** since 1998, leading to 46,250 fewer high school students who have tried cigar smoking.
- \* In the past year, the prevalence of having ever tried smoking cigars **has not changed significantly**.



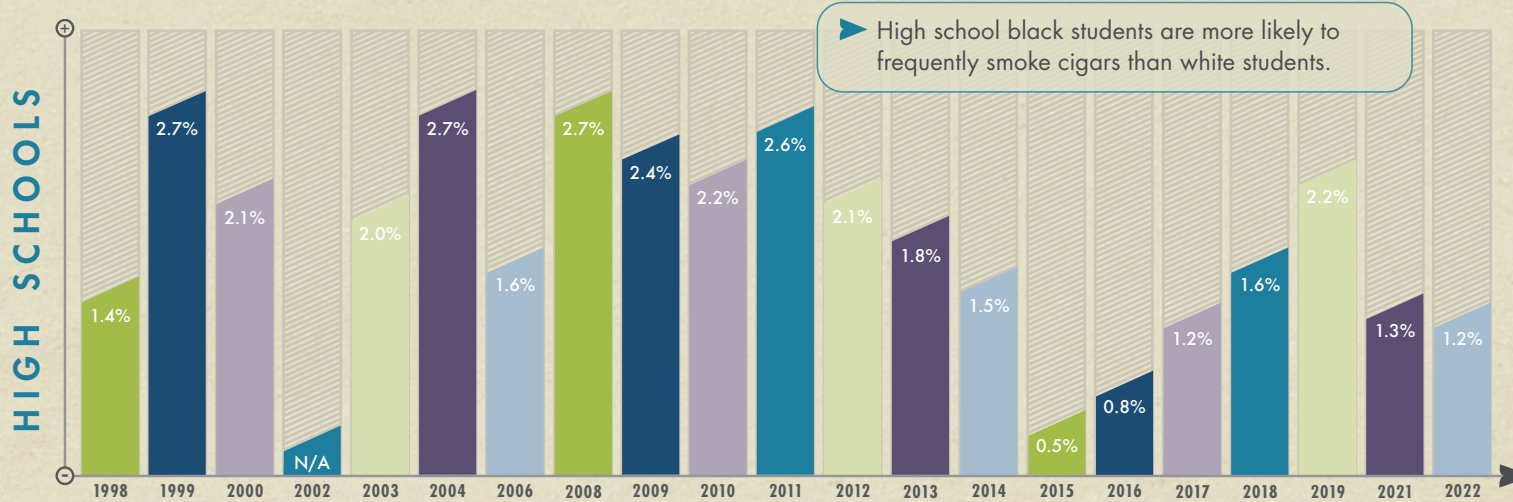
- \* In 2022, **7,089 Mississippi public middle school students** had tried at least one cigar.
- \* The prevalence of having ever tried a cigar has **decreased by 79%** since 1998, leading to 26,791 fewer middle school students who have tried cigar smoking.
- \* In the past year, the prevalence of having ever tried smoking cigars **has not changed significantly**.

▶ Significant Demographic Differences

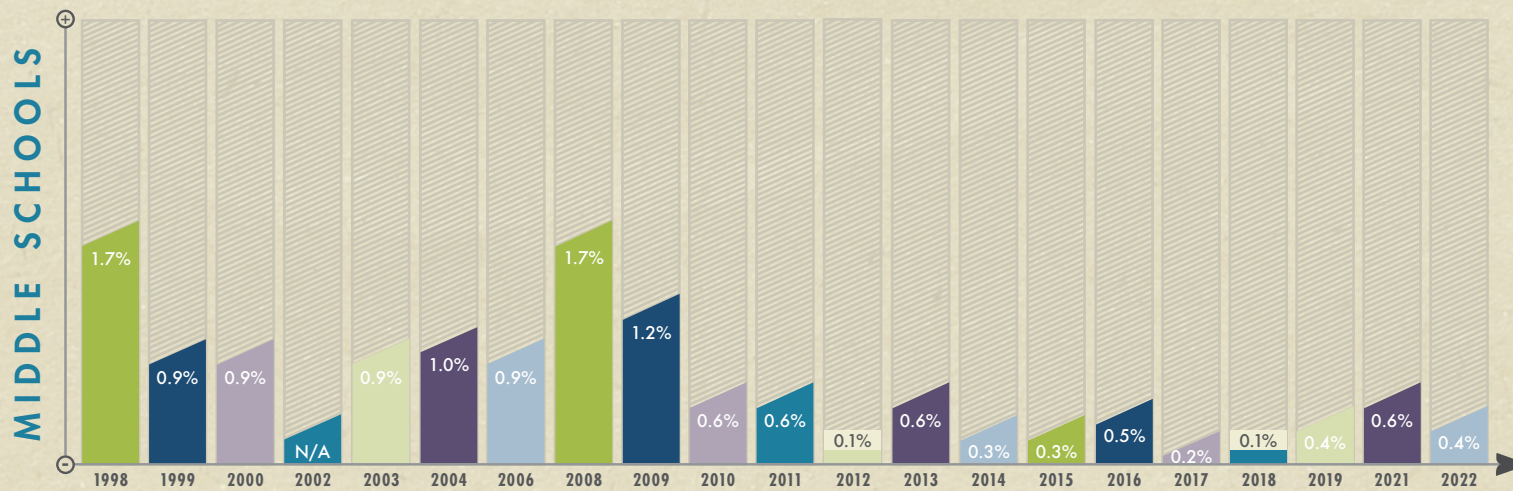


# frequent cigar smoking

## MISSISSIPPI PUBLIC SCHOOLS



- \* In 2022, **1,546 Mississippi public high school students** had smoked cigars on at least 20 of the past 30 days.
- \* Since 1998, the prevalence of frequent cigar smoking *has not changed significantly*.
- \* In the past year, the prevalence of frequent cigar smoking *has not changed significantly*.



- \* In 2022, **417 Mississippi public middle school students** had smoked cigars on at least 20 of the past 30 days.
- \* Since 1998, the prevalence of frequent cigar smoking *has not changed significantly*.
- \* In the past year, the prevalence of frequent cigar smoking *has not changed significantly*.

► Significant Demographic Differences





# Change in *Electronic Cigarette Use*

\*\*Due to the newness of the product, e-cigarette rates were extremely low in 2010 when the YTS first asked about e-cigarette use. The percent change in e-cigarette use reflects this and highlights the surge in use among high school and middle school students.

Current Electronic Cigarette Use  
(Public High School)

	2010	2022	% Change
Overall	1.2%	15.6%	↑ 1200%*
Female	1.1%	16.2%	↑ 1372.7%*
Male	1.3%	14.9%	↑ 1046.2%*
White	1.8%	18.9%	↑ 950.0%*
Black	0.6%	12.7%	↑ 2016.7%*
9th	1.2%	11.4%	↑ 850.0%*
10th	0.9%	15.1%	↑ 1577.8%*
11th	0.3%	16.7%	↑ 5466.7%*
12th	2.5%	20.5%	↑ 720.0%*

Ever Tried an Electronic Cigarette  
(Public High School)

	2010	2022	% Change
Overall	1.9%	37.3%	↑ 1863.2%*
Female	1.8%	39.8%	↑ 2111.1%*
Male	1.9%	34.5%	↑ 1715.8%*
White	3.1%	45.0%	↑ 1351.6%*
Black	0.7%	30.8%	↑ 4300.0%*
9th	1.6%	29.9%	↑ 1768.8%*
10th	1.2%	36.0%	↑ 2900.0%*
11th	1.2%	37.7%	↑ 3041.7%*
12th	3.8%	46.6%	↑ 1126.3%*

Frequent Electronic Cigarette Use  
(Public High School)

	2014	2022	% Change
Overall	1.6%	7.0%	↑ 337.5%*
Female	0.9%	7.2%	↑ 700.0%*
Male	2.2%	6.6%	↑ 200.0%*
White	1.8%	9.9%	↑ 450.0%*
Black	0.9%	4.4%	↑ 388.9%*
9th	0.7%	4.0%	↑ 471.4%*
10th	1.5%	7.0%	↑ 366.7%*
11th	2.2%	7.5%	↑ 240.9%*
12th	2.1%	10.4%	↑ 395.2%*

Current Electronic Cigarette Use  
(Public Middle School)

	2010	2022	% Change
Overall	0.6%	8.2%	↑ 1266.7%*
Female	0.5%	10.3%	↑ 1960.0%*
Male	0.8%	5.9%	↑ 637.5%*
White	1.1%	9.5%	↑ 763.6%*
Black	0.3%	7.4%	↑ 2366.7%*
6th	0.7%	5.9%	↑ 742.9%*
7th	0.3%	7.0%	↑ 2233.3%*
8th	1.0%	11.3%	↑ 1030.0%*

Ever Tried an Electronic Cigarette  
(Public Middle School)

	2010	2022	% Change
Overall	0.9%	17.0%	↑ 1788.9%*
Female	0.7%	19.1%	↑ 2628.6%*
Male	1.0%	14.9%	↑ 1390.0%*
White	1.4%	19.8%	↑ 1314.3%*
Black	0.4%	13.6%	↑ 3300.0%*
6th	0.8%	12.5%	↑ 1462.5%*
7th	0.5%	16.3%	↑ 3160.0%*
8th	1.3%	21.7%	↑ 1569.2%*

Frequent Electronic Cigarette Use  
(Public Middle School)

	2014	2022	% Change
Overall	1.1%	2.0%	ns
Female	0.4%	2.1%	ns
Male	1.6%	1.9%	ns
White	1.1%	2.9%	ns
Black	1.0%	1.3%	ns
6th	0.4%	0.8%	ns
7th	0.8%	1.0%	ns
8th	2.2%	4.0%	ns

KEY

{ (↓) decrease (\*) significant }  
{ (↑) increase (ns) non-significant }



# Change in Cigarette Smoking

Current Cigarette Smoking  
(Public High School)

	1998	2022	% Change
Overall	30.3%	2.3%	↓ 92.4%*
Female	27.1%	1.8%	↓ 93.4%*
Male	33.9%	2.9%	↓ 91.4%*
White	43.8%	3.5%	↓ 92.0%*
Black	14.2%	1.1%	↓ 92.3%*
9th	27.6%	1.2%	↓ 95.7%*
10th	31.4%	3.1%	↓ 90.1%*
11th	33.5%	2.1%	↓ 93.7%*
12th	29.4%	3.0%	↓ 89.8%*

Ever Tried a Cigarette  
(Public High School)

	1998	2022	% Change
Overall	75.6%	17.2%	↓ 77.2%*
Female	72.6%	15.8%	↓ 78.2%*
Male	78.7%	18.7%	↓ 76.2%*
White	79.4%	22.4%	↓ 71.8%*
Black	70.6%	12.5%	↓ 82.3%*
9th	73.1%	12.4%	↓ 83.0%*
10th	75.0%	18.2%	↓ 75.7%*
11th	76.9%	19.3%	↓ 74.9%*
12th	78.2%	19.4%	↓ 75.2%*

Frequent Cigarette Smoking  
(Public High School)

	1998	2022	% Change
Overall	14.3%	0.2%	↓ 98.6%*
Female	11.6%	0.1%	↓ 99.1%*
Male	17.3%	0.3%	↓ 98.3%*
White	23.2%	0.1%	↓ 99.6%*
Black	3.4%	0.3%	↓ 91.2%*
9th	8.3%	0.1%	↓ 98.8%*
10th	16.7%	0.2%	↓ 98.8%*
11th	17.9%	0.4%	↓ 97.8%*
12th	16.1%	0.1%	↓ 99.4%*

Current Cigarette Smoking  
(Public Middle School)

	1998	2022	% Change
Overall	20.6%	1.7%	↓ 91.7%*
Female	18.2%	1.3%	↓ 92.9%*
Male	23.0%	2.0%	↓ 91.3%*
White	22.8%	1.8%	↓ 92.1%*
Black	17.6%	1.3%	↓ 92.6%*
6th	11.9%	0.8%	↓ 93.3%*
7th	21.8%	1.2%	↓ 94.5%*
8th	25.8%	2.8%	↓ 89.1%*

Ever Tried a Cigarette  
(Public Middle School)

	1998	2022	% Change
Overall	54.3%	9.1%	↓ 83.2%*
Female	51.2%	7.4%	↓ 85.5%*
Male	57.3%	10.8%	↓ 81.2%*
White	52.0%	12.1%	↓ 76.7%*
Black	56.3%	5.6%	↓ 90.1%*
6th	41.8%	6.6%	↓ 84.2%*
7th	55.0%	8.9%	↓ 83.8%*
8th	64.0%	11.6%	↓ 81.9%*

Frequent Cigarette Smoking  
(Public Middle School)

	1998	2022	% Change
Overall	5.2%	0.2%	↓ 96.2%*
Female	3.6%	0.0%	↓ 100.0%*
Male	6.8%	0.4%	↓ 94.1%*
White	6.4%	0.0%	↓ 100.0%*
Black	2.6%	0.1%	↓ 96.2%*
6th	1.2%	0.2%	↓ 83.3%*
7th	5.1%	0.0%	↓ 100.0%*
8th	7.1%	0.4%	↓ 94.4%*

## KEY

{ (↓) decrease (\*) significant }  
{ (↑) increase (ns) non-significant }



# Change in Smokeless Tobacco Use

Current Smokeless Tobacco Use  
(Public High School)

	1998	2022	% Change
Overall	9.4%	2.0%	↓ 78.7%*
Female	1.3%	0.6%	ns
Male	18.1%	3.4%	↓ 81.2%*
White	16.0%	2.9%	↓ 81.9%*
Black	1.5%	1.1%	ns
9th	9.1%	2.4%	↓ 73.6%*
10th	11.7%	2.3%	↓ 80.3%*
11th	6.8%	0.3%	↓ 95.6%*
12th	8.6%	2.9%	↓ 66.3%*

Ever Tried Smokeless Tobacco  
(Public High School)

	1998	2022	% Change
Overall	26.2%	5.7%	↓ 78.2%*
Female	11.4%	2.3%	↓ 79.8%*
Male	42.2%	9.1%	↓ 78.4%*
White	38.5%	9.6%	↓ 75.1%*
Black	11.6%	2.0%	↓ 82.8%*
9th	25.7%	4.4%	↓ 82.9%*
10th	27.0%	6.4%	↓ 76.3%*
11th	25.4%	5.7%	↓ 77.6%*
12th	25.8%	6.9%	↓ 73.3%*

Frequent Smokeless Tobacco Use  
(Public High School)

	1998	2022	% Change
Overall	3.7%	0.2%	↓ 94.6%*
Female	0.4%	0.2%	ns
Male	7.3%	0.2%	↓ 97.3%*
White	6.4%	0.2%	↓ 96.9%*
Black	0.2%	0.0%	ns
9th	2.2%	0.1%	↓ 95.5%*
10th	5.5%	0.4%	↓ 92.7%*
11th	3.7%	0.0%	↓ 100.0%*
12th	3.5%	0.5%	ns

Current Smokeless Tobacco Use  
(Public Middle School)

	1998	2022	% Change
Overall	9.6%	1.3%	↓ 86.5%*
Female	4.2%	1.0%	↓ 76.2%*
Male	14.8%	1.7%	↓ 88.5%*
White	12.7%	1.9%	↓ 85.0%*
Black	4.8%	0.6%	↓ 87.5%*
6th	6.5%	0.6%	↓ 90.8%*
7th	8.7%	1.7%	↓ 80.5%*
8th	12.0%	1.6%	↓ 86.7%*

Ever Tried Smokeless Tobacco  
(Public Middle School)

	1998	2022	% Change
Overall	18.1%	4.9%	↓ 72.9%*
Female	7.2%	3.1%	↓ 56.9%*
Male	28.5%	6.5%	↓ 77.2%*
White	24.0%	8.8%	↓ 63.3%*
Black	10.5%	1.3%	↓ 87.6%*
6th	12.9%	4.2%	↓ 67.4%*
7th	19.0%	4.0%	↓ 78.9%*
8th	20.7%	6.4%	↓ 69.1%*

Frequent Smokeless Tobacco Use  
(Public Middle School)

	1998	2022	% Change
Overall	2.2%	0.1%	↓ 95.5%*
Female	0.9%	0.0%	ns
Male	3.5%	0.1%	↓ 97.1%*
White	2.4%	0.1%	ns
Black	1.0%	0.0%	ns
6th	0.5%	0.0%	ns
7th	1.7%	0.0%	↓ 100.0%*
8th	3.0%	0.2%	↓ 93.3%*

KEY

{ (↓) decrease (\*) significant  
(↑) increase (ns) non-significant }



# Change in Cigar Smoking

Current Cigar Smoking  
(Public High School)

	1998	2022	% Change
Overall	22.3%	6.3%	↓ 71.7%*
Female	13.8%	5.6%	↓ 59.4%*
Male	31.1%	7.0%	↓ 77.5%*
White	23.5%	3.2%	↓ 86.4%*
Black	20.1%	9.1%	↓ 54.7%*
9th	18.9%	4.1%	↓ 78.3%*
10th	24.7%	5.7%	↓ 76.9%*
11th	23.8%	7.8%	↓ 67.2%*
12th	22.0%	8.6%	↓ 60.9%*

Ever Tried a Cigar  
(Public High School)

	1998	2022	% Change
Overall	53.0%	17.1%	↓ 67.7%*
Female	43.2%	15.1%	↓ 65.0%*
Male	63.5%	19.0%	↓ 70.1%*
White	54.4%	12.6%	↓ 76.8%*
Black	51.1%	21.5%	↓ 57.9%*
9th	50.0%	12.9%	↓ 74.2%*
10th	49.9%	16.1%	↓ 67.7%*
11th	57.5%	19.5%	↓ 66.1%*
12th	56.9%	21.4%	↓ 62.4%*

Frequent Cigar Smoking  
(Public High School)

	1998	2022	% Change
Overall	1.4%	1.2%	ns
Female	0.2%	0.6%	ns
Male	2.6%	1.7%	ns
White	1.5%	0.2%	ns
Black	0.9%	2.2%	ns
9th	1.1%	0.3%	ns
10th	1.8%	2.0%	ns
11th	1.0%	1.9%	ns
12th	1.4%	0.9%	ns

Current Cigar Smoking  
(Public Middle School)

	1998	2022	% Change
Overall	16.4%	1.9%	↓ 88.4%*
Female	12.3%	2.1%	↓ 82.9%*
Male	20.4%	1.8%	↓ 91.2%*
White	12.3%	0.5%	↓ 95.9%*
Black	19.9%	2.8%	↓ 85.9%*
6th	7.9%	1.1%	↓ 86.1%*
7th	17.1%	2.1%	↓ 87.7%*
8th	21.2%	2.3%	↓ 89.2%*

Ever Tried a Cigar  
(Public Middle School)

	1998	2022	% Change
Overall	32.5%	6.8%	↓ 79.1%*
Female	24.2%	6.0%	↓ 75.2%*
Male	40.7%	7.2%	↓ 82.3%*
White	29.2%	5.8%	↓ 80.1%*
Black	35.6%	7.6%	↓ 78.7%*
6th	19.2%	4.3%	↓ 77.6%*
7th	35.5%	6.8%	↓ 80.8%*
8th	40.2%	8.7%	↓ 78.4%*

Frequent Cigar Smoking  
(Public Middle School)

	1998	2022	% Change
Overall	1.7%	0.4%	ns
Female	0.9%	0.3%	ns
Male	2.4%	0.5%	↓ 79.2%*
White	1.3%	0.0%	ns
Black	1.7%	0.5%	ns
6th	0.2%	0.1%	ns
7th	1.0%	0.5%	ns
8th	1.9%	0.5%	ns

KEY

{ (↓) decrease (\*) significant }  
{ (↑) increase (ns) non-significant }





Mississippi Youth Tobacco Use {2010-2022} Current Electronic Cigarette Smoking - Public High School

	2022	2021	2019	2018	2017	2016	2015	2014	2013	2012	2011	2010
TOTAL	15.6 (±2.3)	17.3 (±3.3)	21.3 (±3.5)	21.6 (±4.4)	11.5 (±2.9)	10.3 (±1.6)	12.0 (±2.1)	10.1 (±2.0)	2.9 (±1.0)	2.7 (±1.2)	2.3 (±1.1)	1.2 (±0.8)
SEX												
FEMALE	16.2 (±3.8)	20.1 (±4.3)	21.3 (±4.3)	19.6 (±5.4)	10.0 (±2.8)	9.1 (±2.0)	8.8 (±2.1)	9.0 (±2.2)	2.4 (±1.1)	1.9 (±1.2)	1.1 (±0.8)	1.1 (±1.0)
MALE	14.9 (±2.1)	14.4 (±3.9)	21.4 (±4.5)	23.6 (±4.4)	13.3 (±3.9)	11.4 (±2.9)	15.1 (±3.0)	11.3 (±2.9)	3.3 (±1.7)	3.4 (±1.9)	3.6 (±1.8)	1.3 (±0.9)
RACE												
WHITE	18.9 (±3.3)	24.8 (±4.3)	33.2 (±5.0)	34.0 (±4.1)	16.7 (±3.9)	15.1 (±2.6)	16.9 (±3.1)	13.6 (±3.7)	5.2 (±2.4)	4.7 (±2.6)	3.4 (±2.2)	1.8 (±1.3)
BLACK	12.7 (±3.4)	9.3 (±2.7)	9.2 (±2.3)	9.4 (±3.3)	6.4 (±2.0)	6.7 (±2.7)	5.7 (±1.8)	6.4 (±1.7)	0.8 (±0.8)	0.8 (±0.7)	1.6 (±1.1)	0.6 (±0.9)
GRADE												
9	11.4 (±3.3)	18.6 (±4.4)	17.2 (±4.9)	18.1 (±4.3)	9.0 (±2.7)	8.7 (±2.6)	9.1 (±2.5)	8.1 (±3.0)	1.9 (±1.5)	2.6 (±1.6)	1.7 (±1.5)	1.2 (±1.0)
10	15.1 (±4.3)	14.7 (±5.6)	17.4 (±4.6)	22.8 (±5.3)	11.7 (±4.2)	10.6 (±3.2)	13.6 (±4.9)	11.2 (±3.1)	2.3 (±1.8)	4.3 (±2.7)	1.9 (±2.0)	0.9 (±1.0)
11	16.7 (±4.6)	17.9 (±3.7)	23.0 (±6.6)	24.8 (±9.3)	10.5 (±6.2)	10.4 (±2.9)	10.2 (±5.0)	10.4 (±3.8)	2.7 (±1.6)	2.4 (±1.9)	1.3 (±1.3)	0.3 (±1.0)
12	20.5 (±4.2)	18.2 (±8.7)	29.2 (±8.8)	21.1 (±6.1)	15.2 (±5.5)	11.1 (±3.2)	15.3 (±5.2)	11.3 (±6.1)	5.0 (±2.3)	1.1 (±2.1)	4.4 (±3.4)	2.5 (±2.4)

Mississippi Youth Tobacco Use {2010-2022} Current Electronic Cigarette Smoking - Public Middle School

	2022	2021	2019	2018	2017	2016	2015	2014	2013	2012	2011	2010
TOTAL	8.2 (±2.5)	9.7 (±2.0)	8.6 (±2.0)	7.1 (±1.8)	4.8 (±1.2)	5.9 (±1.8)	4.6 (±1.5)	6.7 (±2.6)	1.5 (±0.7)	1.1 (0.6)	1.0 (±0.7)	0.6 (±0.4)
SEX												
FEMALE	10.3 (±3.8)	11.0 (±3.2)	7.4 (±1.9)	7.4 (±2.1)	4.6 (±1.4)	4.6 (±1.9)	4.2 (±1.9)	4.4 (±2.1)	1.0 (±0.9)	1.3 (±1.0)	0.5 (±0.8)	0.5 (±0.6)
MALE	5.9 (±3.3)	8.4 (±2.4)	9.4 (±2.5)	6.9 (±2.2)	5.1 (±1.9)	7.1 (±2.6)	5.0 (±1.7)	8.8 (±3.9)	1.9 (±0.9)	0.8 (±0.6)	1.6 (±1.2)	0.8 (±0.4)
RACE												
WHITE	9.5 (±4.7)	12.6 (±3.3)	13.2 (±3.0)	9.5 (±2.8)	6.5 (±2.3)	7.6 (±2.7)	5.9 (±2.4)	6.1 (±3.5)	2.0 (±1.2)	1.4 (±1.1)	1.6 (±1.5)	1.1 (±0.7)
BLACK	7.4 (±3.3)	6.9 (±2.0)	4.5 (±2.6)	4.7 (±1.3)	2.8 (±1.6)	4.1 (±2.5)	2.8 (±1.7)	7.8 (±3.9)	0.9 (±0.8)	0.2 (±0.4)	0.6 (±0.7)	0.3 (±0.5)
GRADE												
6	5.9 (±3.3)	4.8 (±2.5)	4.1 (±2.5)	4.1 (±1.1)	2.2 (±1.8)	4.3 (±2.9)	1.2 (±1.3)	5.3 (±3.7)	1.2 (±0.8)	0.4 (±1.1)	0.4 (±0.7)	0.7 (±1.1)
7	7.0 (±3.6)	9.6 (±2.3)	7.4 (±2.6)	6.9 (±2.7)	4.4 (±1.9)	5.1 (±3.0)	5.5 (±2.3)	7.1 (±4.8)	1.0 (±1.1)	0.5 (±0.7)	1.2 (±1.3)	0.3 (±1.3)
8	11.3 (±4.8)	15.2 (±3.7)	14.9 (±4.3)	10.3 (±4.9)	8.0 (±2.5)	8.1 (±2.3)	7.1 (±3.3)	7.7 (±4.0)	2.3 (±1.6)	2.3 (±1.2)	1.4 (±1.3)	1.0 (±1.1)

Changes between 2013 and 2014 in the wording and placement of questions about the use of e-cigarettes might have had an impact on reported use of these products.



Mississippi Youth Tobacco Use {2010-2022} Ever Tried an Electronic Cigarette - Public High School

	2022	2021	2019	2018	2017	2016	2015	2014	2013	2012	2011	2010
<b>TOTAL</b>	37.3 (±3.6)	33.0 (±4.5)	37.7 (±5.0)	38.0 (±5.8)	26.7 (±3.7)	26.9 (±2.7)	26.9 (±3.6)	21.6 (±3.0)	9.7 (±2.6)	8.4 (±3.6)	5.9 (±2.0)	1.9 (±1.1)
<b>SEX</b>												
FEMALE	39.8 (±4.6)	37.1 (±5.5)	38.8 (±5.8)	34.6 (±6.8)	26.4 (±4.4)	23.5 (±3.8)	22.6 (±3.2)	19.6 (±3.4)	8.5 (±2.7)	7.5 (±4.4)	2.8 (±1.7)	1.8 (±1.9)
MALE	34.5 (±4.5)	28.3 (±4.6)	36.9 (±5.8)	41.4 (±6.1)	27.5 (±4.9)	30.0 (±3.1)	31.4 (±4.9)	23.0 (±4.1)	10.9 (±3.2)	9.2 (±3.8)	9.1 (±3.1)	1.9 (±1.1)
<b>RACE</b>												
WHITE	45.0 (±4.6)	44.5 (±6.1)	51.8 (±5.8)	55.4 (±3.3)	36.8 (±4.4)	35.9 (±4.5)	39.4 (±3.1)	31.0 (±3.9)	17.8 (±4.5)	16.1 (±5.7)	11.8 (±3.2)	3.1 (±1.9)
BLACK	30.8 (±4.8)	21.0 (±4.0)	23.8 (±3.8)	20.2 (±4.7)	15.8 (±4.0)	17.8 (±2.9)	14.3 (±3.6)	11.1 (±2.8)	2.2 (±1.4)	1.1 (±1.1)	1.3 (±1.2)	0.7 (±0.8)
<b>GRADE</b>												
9	29.9 (±4.7)	34.6 (±5.6)	33.2 (±5.7)	34.1 (±5.4)	21.6 (±4.6)	21.1 (±5.1)	22.2 (±5.5)	15.9 (±5.1)	5.6 (±3.0)	6.1 (±3.9)	4.2 (±2.8)	1.6 (±0.9)
10	36.0 (±5.8)	30.2 (±10.2)	33.6 (±6.2)	41.4 (±5.5)	26.9 (±4.8)	29.4 (±5.4)	30.0 (±5.9)	23.4 (±5.5)	9.9 (±4.3)	10.1 (±4.6)	6.2 (±3.2)	1.2 (±1.5)
11	37.7 (±8.0)	35.3 (±5.4)	39.3 (±9.4)	39.5 (±10.3)	29.3 (±9.2)	30.0 (±4.3)	24.1 (±5.4)	22.3 (±5.6)	8.7 (±4.4)	7.0 (±3.6)	5.5 (±2.2)	1.2 (±1.5)
12	46.6 (±7.2)	31.6 (±11.2)	46.5 (±11.0)	37.4 (±8.6)	30.0 (±5.8)	26.8 (±6.0)	31.7 (±7.9)	26.6 (±7.4)	15.7 (±5.9)	10.9 (±9.0)	8.5 (±4.6)	3.8 (±4.7)

Mississippi Youth Tobacco Use {2010-2022} Ever Tried an Electronic Cigarette - Public Middle School

	2022	2021	2019	2018	2017	2016	2015	2014	2013	2012	2011	2010
<b>TOTAL</b>	17.0 (±3.3)	20.3 (±3.6)	18.8 (±3.0)	16.6 (±2.9)	12.0 (±2.6)	13.8 (±2.9)	12.0 (±2.0)	10.7 (±3.0)	3.2 (±1.2)	3.5 (±1.4)	2.0 (±0.9)	0.9 (±0.6)
<b>SEX</b>												
FEMALE	19.1 (±4.8)	22.4 (±4.8)	17.2 (±3.1)	16.8 (±3.3)	12.0 (±3.2)	10.5 (±2.6)	9.8 (±2.2)	6.7 (±2.5)	3.3 (±1.5)	3.6 (±1.8)	1.2 (±0.9)	0.7 (±0.8)
MALE	14.9 (±4.2)	18.1 (±3.6)	20.4 (±3.7)	16.5 (±3.2)	11.9 (±3.2)	17.0 (±4.4)	14.0 (±2.9)	14.7 (±4.5)	3.2 (±1.5)	3.5 (±1.8)	2.8 (±1.7)	1.0 (±0.8)
<b>RACE</b>												
WHITE	19.8 (±4.8)	26.8 (±4.7)	25.6 (±4.1)	21.0 (±4.7)	16.4 (±3.8)	17.8 (±5.0)	15.3 (±3.0)	11.8 (±3.9)	5.2 (±1.9)	5.1 (±2.3)	2.8 (±1.6)	1.4 (±1.2)
BLACK	13.6 (±4.7)	14.1 (±2.7)	13.5 (±4.0)	12.1 (±2.0)	8.1 (±3.3)	9.5 (±3.1)	8.1 (±2.1)	9.9 (±4.8)	1.2 (±0.9)	1.5 (±0.6)	1.2 (±1.1)	0.4 (±0.5)
<b>GRADE</b>												
6	12.5 (±4.3)	13.8 (±4.2)	13.0 (±4.4)	12.0 (±2.9)	7.3 (±2.6)	8.6 (±3.5)	7.4 (±2.2)	8.4 (±4.2)	1.8 (±1.1)	2.1 (±1.4)	1.4 (±1.3)	0.8 (±1.0)
7	16.3 (±3.6)	21.1 (±4.5)	15.6 (±3.2)	15.5 (±5.0)	12.0 (±4.2)	13.8 (±3.1)	11.8 (±2.4)	11.2 (±6.4)	3.4 (±2.1)	3.2 (±2.2)	2.3 (±1.5)	0.5 (±1.1)
8	21.7 (±7.7)	26.5 (±5.2)	29.0 (±5.2)	22.4 (±5.9)	16.5 (±4.5)	18.8 (±5.1)	16.5 (±4.4)	12.5 (±5.1)	4.6 (±1.5)	5.4 (±2.5)	2.0 (±1.5)	1.3 (±1.2)

Changes between 2013 and 2014 in the wording and placement of questions about the use of e-cigarettes might have had an impact on reported use of these products.



Mississippi Youth Tobacco Use {2014-2022} Frequent Electronic Cigarette Smoking - Public High School

	2022	2021	2019	2018	2017	2016	2015	2014
TOTAL	7.0 (±1.3)	7.1 (±2.2)	7.3 (±1.7)	6.6 (±2.0)	3.5 (±1.6)	1.9 (±0.8)	2.1 (±1.1)	1.6 (±0.9)
SEX								
FEMALE	7.2 (±2.4)	7.2 (±2.3)	5.2 (±2.0)	5.1 (±2.3)	2.6 (±1.4)	1.0 (±1.1)	1.6 (±1.0)	0.9 (0.9)
MALE	6.6 (±1.6)	6.8 (±2.6)	9.5 (±2.2)	8.2 (±2.7)	4.5 (±2.2)	2.8 (±1.3)	2.5 (±1.5)	2.2 (±1.3)
RACE								
WHITE	9.9 (±2.2)	12.5 (±3.5)	12.0 (±3.2)	12.5 (±2.5)	5.2 (±2.5)	3.1 (±1.7)	2.7 (±1.7)	1.8 (±1.3)
BLACK	4.4 (±1.3)	2.0 (±1.1)	2.1 (±1.0)	1.4 (±0.8)	1.6 (±1.0)	0.9 (±1.0)	1.1 (±0.8)	0.9 (±0.9)
GRADE								
9	4.0 (±2.1)	5.2 (±1.9)	3.1 (±1.7)	4.1 (±2.0)	2.1 (±1.3)	1.5 (±1.2)	1.9 (±1.6)	0.7 (±1.0)
10	7.0 (±2.7)	5.5 (±3.3)	6.2 (±1.9)	6.5 (±2.9)	2.8 (±1.9)	1.3 (±1.5)	3.0 (±2.6)	1.5 (±1.2)
11	7.5 (±1.8)	7.5 (±3.0)	9.1 (±3.5)	7.9 (±3.9)	4.2 (±3.1)	3.0 (±2.4)	1.4 (±1.5)	2.2 (±1.5)
12	10.4 (±3.0)	11.0 (±5.3)	11.8 (±5.3)	8.1 (±4.1)	5.0 (±3.4)	2.3 (±1.5)	1.6 (±1.5)	2.1 (±2.3)

Mississippi Youth Tobacco Use {2014-2022} Frequent Electronic Cigarette Smoking - Public Middle School

	2022	2021	2019	2018	2017	2016	2015	2014
TOTAL	2.0 (±1.1)	1.8 (±0.8)	1.4 (±1.0)	1.0 (±0.4)	1.2 (±0.6)	0.9 (±0.4)	0.6 (±0.5)	1.1 (±0.7)
SEX								
FEMALE	2.1 (±1.2)	2.2 (±1.3)	1.3 (±1.1)	0.7 (±0.6)	1.4 (±0.9)	0.4 (0.2)	0.3 (±0.4)	0.4 (±0.8)
MALE	1.9 (±1.3)	1.3 (±1.0)	1.4 (±1.2)	1.1 (±0.5)	1.0 (±0.7)	1.4 (0.7)	0.8 (±0.7)	1.6 (±1.3)
RACE								
WHITE	2.9 (±2.4)	1.9 (±0.8)	2.3 (±1.7)	1.4 (±0.8)	1.9 (±0.8)	0.8 (±0.9)	1.0 (±0.9)	1.1 (±1.6)
BLACK	1.3 (±1.1)	1.7 (±1.3)	0.5 (±0.7)	0.3 (±0.4)	0.3 (±0.5)	0.6 (±0.6)	0.1 (±0.5)	1.0 (±0.9)
GRADE								
6	0.8 (±1.1)	1.1 (±1.2)	0.2 (±0.3)	0.4 (±0.5)	0.0 (±0.0)	0.3 (±0.6)	0.1 (±0.2)	0.4 (±0.8)
7	1.0 (±1.0)	1.2 (±0.8)	0.3 (±0.4)	0.8 (±0.7)	0.6 (±0.6)	0.9 (±0.9)	0.9 (±0.9)	0.8 (±1.3)
8	4.0 (±2.9)	3.1 (±1.4)	4.1 (±2.5)	1.8 (±1.3)	3.0 (±1.6)	1.5 (±1.3)	0.7 (±0.9)	2.2 (±2.6)



Mississippi Youth Tobacco Use {1998-2022} Current Cigarette Smoking - Public High School

	2022	2021	2019	2018	2017	2016	2015	2014	2013	2012
TOTAL	2.3 (±0.7)	4.4 (±1.0)	6.5 (±1.5)	6.9 (±1.9)	7.2 (±1.9)	9.4 (±1.8)	9.9 (±1.9)	12.2 (±2.5)	13.3 (±3.0)	18.1 (±4.0)
SEX										
FEMALE	1.8 (±0.9)	3.9 (±1.6)	4.3 (±1.6)	6.0 (±2.0)	6.2 (±2.1)	9.0 (±2.8)	5.9 (±1.7)	9.6 (±2.4)	11.4 (±3.7)	15.8 (±4.6)
MALE	2.9 (±1.1)	4.6 (±1.6)	8.6 (±2.1)	7.9 (±2.7)	8.2 (±2.0)	9.9 (±1.9)	14.1 (±3.0)	14.9 (±3.3)	15.2 (±3.2)	20.3 (±4.9)
RACE										
WHITE	3.5 (±1.4)	6.6 (±2.1)	9.0 (±1.9)	11.2 (±3.0)	12.4 (±2.0)	14.9 (±3.7)	16.0 (±2.2)	17.5 (±4.3)	20.2 (±3.9)	25.6 (±6.0)
BLACK	1.1 (±0.5)	2.5 (±0.9)	3.2 (±1.4)	2.4 (±1.1)	2.0 (±1.0)	4.4 (±1.5)	3.4 (±1.8)	7.1 (±1.7)	7.1 (±2.9)	11.2 (±3.1)
GRADE										
9	1.2 (±1.0)	4.2 (±2.8)	5.4 (±2.7)	3.9 (±2.1)	3.3 (±1.5)	5.2 (±2.3)	6.8 (±2.4)	8.9 (±2.7)	6.9 (±3.9)	10.8 (±3.6)
10	3.1 (±1.6)	2.8 (±2.0)	6.3 (±2.3)	6.5 (±2.7)	6.3 (±2.7)	7.4 (±2.8)	11.4 (±3.5)	9.7 (±3.1)	12.5 (±5.1)	20.8 (±6.4)
11	2.1 (±1.4)	4.5 (±2.9)	5.8 (±2.5)	8.3 (±4.3)	8.0 (±4.2)	12.2 (±4.2)	7.6 (±3.3)	12.8 (±5.5)	14.7 (±4.8)	19.6 (±5.9)
12	3.0 (±2.3)	6.5 (±2.7)	8.5 (±3.8)	9.4 (±2.7)	11.7 (±3.3)	14.0 (±4.7)	14.4 (±5.4)	19.7 (±7.0)	21.3 (±5.3)	22.6 (±9.3)

	2011	2010	2009	2008	2006	2004	2003	2002	2000	1998
TOTAL	19.0 (±3.8)	19.7 (±2.5)	18.8 (±2.2)	20.2 (±4.4)	18.7 (±5.1)	22.1 (±2.6)	23.4 (±1.5)	23.1 (±2.6)	29.2 (±3.6)	30.3 (±3.0)
SEX										
FEMALE	13.9 (±3.3)	17.8 (±3.6)	15.6 (±3.0)	15.7 (±3.8)	16.9 (±5.5)	19.7 (±2.9)	20.6 (±2.0)	21.1 (±3.6)	26.2 (±5.9)	27.1 (±4.6)
MALE	24.3 (±5.3)	21.5 (±3.0)	22.2 (±3.1)	24.8 (±5.8)	20.1 (±5.5)	24.3 (±3.1)	26.0 (±1.9)	25.1 (±3.1)	32.3 (±4.6)	33.9 (±4.0)
RACE										
WHITE	27.9 (±4.5)	29.0 (±3.3)	27.6 (±3.7)	28.9 (±5.4)	25.9 (±4.7)	29.9 (±3.8)	31.0 (±2.3)	29.3 (±2.7)	41.7 (±5.9)	43.8 (±4.2)
BLACK	11.1 (±3.6)	11.1 (±2.1)	9.8 (±2.5)	10.1 (±6.0)	11.6 (±3.5)	14.1 (±2.8)	14.1 (±1.4)	16.7 (±4.0)	13.3 (±3.0)	14.2 (±2.7)
GRADE										
9	12.8 (±5.8)	14.7 (±4.2)	14.4 (±3.5)	17.7 (±7.4)	17.0 (±4.3)	19.8 (±4.3)	22.4 (±2.6)	20.0 (±4.4)	25.3 (±5.3)	27.6 (±5.0)
10	19.2 (±5.7)	20.0 (±4.7)	20.0 (±3.3)	19.0 (±6.1)	12.9 (±7.4)	22.9 (±4.3)	21.8 (±2.4)	19.7 (±2.7)	27.6 (±5.5)	31.4 (±6.6)
11	19.4 (±5.2)	22.0 (±4.1)	19.8 (±3.1)	15.5 (±7.5)	20.1 (±5.9)	22.7 (±4.6)	24.2 (±2.8)	27.1 (±5.9)	32.9 (±8.5)	33.5 (±6.5)
12	27.0 (±5.1)	23.9 (±6.3)	22.8 (±6.3)	29.9 (±8.2)	27.5 (±6.1)	24.6 (±6.4)	25.5 (±2.4)	26.6 (±5.8)	32.6 (±8.9)	29.4 (±6.8)

We removed the 1999 data due to space restrictions. These data are available in the YTS booklets from previous years.





Mississippi Youth Tobacco Use {1998-2022} Current Cigarette Smoking - Public Middle School

APPENDIX { CIGARETTES }

	2022	2021	2019	2018	2017	2016	2015	2014	2013	2012
TOTAL	1.7 (±0.8)	2.1 (±0.9)	3.0 (±1.3)	2.5 (±0.9)	1.5 (±0.7)	3.8 (±1.0)	3.0 (±0.9)	4.7 (±1.5)	4.1 (±1.3)	5.8 (±1.8)
SEX										
FEMALE	1.3 (±1.0)	1.8 (±1.1)	2.1 (±1.3)	2.1 (±1.4)	1.1 (±0.6)	2.5 (±1.0)	2.5 (±1.2)	3.2 (±1.4)	3.4 (±1.6)	5.0 (±2.0)
MALE	2.0 (±1.0)	2.4 (±1.1)	3.8 (±2.0)	2.7 (±0.9)	1.8 (±1.0)	4.9 (±2.0)	3.5 (±1.1)	6.2 (±2.3)	4.6 (±1.5)	6.6 (±2.4)
RACE										
WHITE	1.8 (±1.2)	1.7 (±1.1)	3.1 (±1.9)	2.4 (±1.1)	2.2 (±1.3)	4.1 (±1.2)	4.1 (±1.4)	4.9 (±2.7)	4.9 (±1.8)	7.7 (±2.7)
BLACK	1.3 (±1.0)	2.6 (±1.6)	3.1 (±1.8)	1.9 (±1.0)	0.7 (±0.4)	3.3 (±1.7)	1.9 (±1.2)	4.4 (±2.0)	3.1 (±1.4)	3.8 (±2.0)
GRADE										
6	0.8 (±1.0)	2.0 (±1.7)	3.5 (±3.0)	1.9 (±1.2)	1.0 (±0.8)	2.6 (±2.0)	1.0 (±0.8)	2.2 (±2.0)	2.9 (±1.2)	2.8 (±1.9)
7	1.2 (±1.1)	1.9 (±1.3)	1.7 (±1.1)	2.7 (±1.4)	1.3 (±1.3)	4.1 (±1.9)	3.4 (±1.6)	3.9 (±2.0)	3.5 (±1.6)	4.4 (±2.5)
8	2.8 (±2.3)	2.4 (±0.8)	4.1 (±2.5)	3.0 (±2.2)	2.1 (±1.7)	4.5 (±1.8)	4.5 (±1.7)	8.0 (±3.6)	6.0 (±2.2)	10.6 (±3.2)

	2011	2010	2009	2008	2006	2004	2003	2002	2000	1998
TOTAL	5.8 (±1.8)	5.7 (±1.5)	7.2 (±1.7)	8.9 (±2.0)	8.4 (±1.6)	12.0 (±2.0)	11.0 (±1.2)	11.9 (±1.6)	18.1 (±2.3)	20.6 (±3.1)
SEX										
FEMALE	4.7 (±2.5)	4.4 (±1.8)	6.2 (±1.8)	6.9 (±2.8)	7.8 (±2.4)	11.0 (±2.5)	9.8 (±1.3)	11.5 (±2.0)	16.9 (±2.6)	18.2 (±4.8)
MALE	6.7 (±2.2)	6.8 (±1.9)	8.0 (±2.5)	11.0 (±2.3)	9.0 (±2.6)	12.8 (±2.8)	12.0 (±1.4)	12.1 (±1.8)	19.2 (±3.5)	23.0 (±3.4)
RACE										
WHITE	6.0 (±2.1)	6.2 (±2.0)	8.8 (±3.1)	11.2 (±3.0)	9.9 (±2.6)	13.5 (±3.4)	10.7 (±1.5)	13.3 (±2.0)	20.9 (±3.6)	22.8 (±4.4)
BLACK	5.1 (±2.5)	5.2 (±2.4)	5.6 (±2.0)	6.9 (±1.9)	7.0 (±2.3)	10.2 (±2.1)	10.8 (±1.4)	8.8 (±2.9)	15.0 (±3.5)	17.6 (±4.0)
GRADE										
6	2.4 (±1.2)	2.8 (±1.8)	3.6 (±2.0)	4.4 (±2.8)	4.0 (±2.1)	6.8 (±1.9)	7.1 (±1.3)	8.8 (±2.1)	13.6 (±4.2)	11.9 (±4.7)
7	5.6 (±2.1)	6.5 (±1.7)	6.7 (±2.7)	10.1 (±3.1)	7.2 (±2.2)	13.6 (±3.5)	10.8 (±1.8)	14.9 (±2.7)	22.0 (±2.7)	21.8 (±7.7)
8	8.0 (±3.9)	7.8 (±3.2)	11.1 (±3.6)	12.5 (±3.8)	13.5 (±2.6)	15.1 (±4.5)	14.9 (±1.8)	14.7 (±3.7)	18.5 (±4.1)	25.8 (±5.3)

We removed the 1999 data due to space restrictions. These data are available in the YTS booklets from previous years.



Mississippi Youth Tobacco Use {1998-2022} Ever Tried a Cigarette - Public High School

	2022	2021	2019	2018	2017	2016	2015	2014	2013	2012
<b>TOTAL</b>	17.2 (±2.6)	19.5 (±3.4)	22.5 (±3.2)	26.5 (±4.5)	32.9 (±4.0)	32.1 (±2.6)	35.8 (±5.0)	37.4 (±3.7)	39.8 (±5.3)	46.7 (±3.2)
<b>SEX</b>										
FEMALE	15.8 (±3.1)	19.2 (±3.7)	21.8 (±4.7)	23.9 (±4.7)	33.6 (±4.3)	30.4 (±4.4)	28.0 (±5.4)	33.4 (±3.7)	36.6 (±5.6)	42.7 (±4.2)
MALE	18.7 (±2.9)	18.7 (±4.5)	23.0 (±3.1)	29.4 (±5.6)	32.7 (±5.2)	33.6 (±2.9)	43.2 (±6.1)	41.0 (±4.9)	43.0 (±6.1)	50.7 (±4.7)
<b>RACE</b>										
WHITE	22.4 (±4.1)	27.3 (±5.4)	29.8 (±4.6)	36.2 (±4.5)	41.8 (±3.3)	41.1 (±4.5)	44.2 (±5.8)	43.0 (±4.5)	45.3 (±6.2)	51.8 (±5.7)
BLACK	12.5 (±3.1)	11.2 (±2.9)	14.5 (±4.0)	16.4 (±3.6)	24.0 (±4.5)	23.3 (±2.9)	26.7 (±5.6)	31.3 (±4.0)	34.7 (±5.9)	41.6 (±4.6)
<b>GRADE</b>										
9	12.4 (±3.8)	20.0 (±5.0)	18.9 (±3.9)	24.7 (±5.9)	23.8 (±3.3)	26.8 (±5.8)	26.1 (±6.5)	30.3 (±5.9)	27.2 (±7.9)	35.2 (±5.8)
10	18.2 (±5.3)	13.2 (±4.5)	19.3 (±3.7)	24.3 (±5.2)	31.9 (±7.1)	29.3 (±5.5)	37.3 (±5.8)	37.1 (±6.7)	42.3 (±6.4)	50.5 (±7.5)
11	19.3 (±5.0)	20.3 (±6.0)	23.6 (±7.9)	28.8 (±8.7)	34.4 (±7.1)	37.1 (±6.9)	38.6 (±7.4)	39.8 (±5.9)	44.0 (±9.9)	49.1 (±5.6)
12	19.4 (±5.0)	25.2 (±8.5)	29.2 (±10.0)	28.5 (±7.7)	43.4 (±5.0)	37.0 (±6.1)	44.0 (±12.2)	44.4 (±8.6)	48.3 (±8.4)	54.4 (±10.9)

	2011	2010	2009	2008	2006	2004	2003	2002	2000	1998
<b>TOTAL</b>	46.8 (±5.1)	51.2 (±3.2)	48.0 (±3.1)	54.0 (±4.5)	61.2 (±3.9)	59.4 (±2.5)	60.7 (±1.7)	61.5 (±2.5)	71.5 (±2.2)	75.6 (±3.0)
<b>SEX</b>										
FEMALE	41.8 (±5.4)	48.7 (±4.0)	43.5 (±4.1)	48.2 (±4.2)	61.0 (±6.9)	54.8 (±3.5)	57.4 (±2.6)	59.3 (±2.9)	70.0 (±4.0)	72.6 (±3.7)
MALE	52.4 (±6.4)	53.5 (±4.7)	53.1 (±3.6)	59.7 (±6.3)	61.2 (±4.2)	63.9 (±3.3)	64.2 (±1.8)	64.0 (±3.7)	73.1 (±2.9)	78.7 (±3.3)
<b>RACE</b>										
WHITE	55.5 (±5.7)	59.0 (±5.0)	53.2 (±5.0)	56.2 (±6.3)	67.1 (±8.6)	64.3 (±3.6)	63.1 (±2.1)	61.4 (±3.5)	75.5 (±4.9)	79.4 (±3.3)
BLACK	38.8 (±5.7)	44.0 (±4.0)	42.6 (±4.1)	50.9 (±7.4)	56.0 (±3.4)	54.2 (±4.2)	57.5 (±2.7)	61.1 (±3.8)	65.9 (±3.8)	70.6 (±4.5)
<b>GRADE</b>										
9	41.9 (±8.7)	42.9 (±5.4)	42.3 (±4.8)	51.0 (±9.3)	59.8 (±6.9)	56.3 (±4.8)	57.9 (±3.1)	54.5 (±4.9)	69.3 (±3.5)	73.1 (±4.3)
10	48.5 (±10.0)	49.9 (±5.3)	50.4 (±4.3)	52.1 (±6.8)	57.2 (±5.6)	58.7 (±5.4)	59.6 (±2.6)	62.4 (±3.7)	69.3 (±4.5)	75.0 (±7.7)
11	43.4 (±8.4)	56.6 (±6.8)	48.0 (±7.1)	48.9 (±8.3)	65.8 (±10.5)	58.4 (±6.8)	62.3 (±2.9)	65.0 (±5.2)	72.7 (±8.3)	76.9 (±5.3)
12	55.2 (±6.1)	58.7 (±5.9)	53.3 (±6.5)	66.7 (±7.1)	63.9 (±7.2)	67.1 (±4.9)	64.5 (±2.6)	66.5 (±4.1)	75.9 (±6.8)	78.2 (±5.6)

We removed the 1999 data due to space restrictions. These data are available in the YTS booklets from previous years.



Mississippi Youth Tobacco Use {1998-2022} Ever Tried a Cigarette - Public Middle School

	2022	2021	2019	2018	2017	2016	2015	2014	2013	2012
TOTAL	9.1 (±3.3)	13.0 (±2.6)	13.4 (±3.5)	12.9 (±2.3)	12.7 (±2.7)	17.0 (±3.2)	15.0 (±2.5)	19.3 (±4.7)	16.8 (±3.3)	20.8 (±4.5)
SEX										
FEMALE	7.4 (±3.0)	12.2 (±2.9)	10.8 (±3.0)	11.6 (±2.3)	11.3 (±3.0)	13.3 (±2.6)	13.6 (±3.5)	15.0 (±4.0)	14.5 (±3.3)	17.9 (±4.0)
MALE	10.8 (±5.9)	13.9 (±3.1)	15.9 (±4.5)	14.2 (±2.8)	14.0 (±3.4)	20.9 (±5.0)	16.4 (±2.9)	23.7 (±6.8)	19.0 (±3.8)	23.7 (±5.8)
RACE										
WHITE	12.1 (±4.4)	14.0 (±3.0)	15.4 (±4.4)	13.7 (±3.6)	11.8 (±4.0)	17.2 (±4.1)	16.2 (±3.0)	17.3 (±5.0)	18.0 (±4.3)	25.2 (±5.5)
BLACK	5.6 (±2.3)	11.7 (±3.7)	12.3 (±4.4)	11.9 (±2.4)	13.0 (±3.7)	16.5 (±4.2)	13.8 (±4.8)	21.8 (±7.7)	15.1 (±3.7)	16.5 (±5.0)
GRADE										
6	6.6 (±2.9)	10.9 (±3.6)	10.5 (±4.9)	9.9 (±2.8)	7.1 (±3.2)	15.2 (±4.9)	8.0 (±3.0)	13.5 (±6.2)	11.6 (±3.9)	12.0 (±5.1)
7	8.9 (±2.4)	12.6 (±3.6)	11.2 (±3.3)	13.1 (±5.5)	11.8 (±3.9)	14.7 (±3.7)	14.2 (±2.6)	20.5 (±9.7)	14.8 (±3.2)	20.8 (±5.2)
8	11.6 (±6.9)	15.8 (±3.6)	19.2 (±6.1)	15.8 (±4.3)	19.5 (±4.1)	21.0 (±4.5)	22.1 (±4.7)	24.1 (±6.1)	24.1 (±5.2)	30.2 (±7.4)

	2011	2010	2009	2008	2006	2004	2003	2002	2000	1998
TOTAL	23.3 (±4.7)	23.9 (±3.3)	25.9 (±3.5)	34.8 (±4.8)	33.3 (±5.1)	38.9 (±3.9)	36.3 (±2.5)	40.9 (±3.5)	53.4 (±3.3)	54.3 (±4.1)
SEX										
FEMALE	21.6 (±4.8)	21.7 (±4.3)	23.8 (±4.5)	29.9 (±5.6)	32.3 (±6.2)	36.4 (±3.9)	33.6 (±2.7)	38.5 (±4.6)	48.6 (±3.4)	51.2 (±5.3)
MALE	24.8 (±5.3)	26.1 (±3.5)	27.9 (±3.8)	39.4 (±4.8)	34.4 (±6.1)	41.5 (±5.0)	39.0 (±2.9)	43.5 (±3.2)	58.1 (±4.8)	57.3 (±4.3)
RACE										
WHITE	22.2 (±6.5)	25.4 (±4.6)	24.4 (±5.3)	31.9 (±6.0)	30.4 (±6.5)	36.2 (±5.8)	33.3 (±3.0)	39.4 (±3.6)	50.1 (±4.6)	52.0 (±6.6)
BLACK	24.3 (±5.2)	22.3 (±4.5)	26.7 (±4.4)	37.0 (±5.0)	36.2 (±6.2)	41.5 (±2.9)	39.3 (±2.7)	41.8 (±5.8)	56.7 (±7.9)	56.3 (±7.1)
GRADE										
6	13.1 (±6.3)	14.9 (±5.2)	18.2 (±4.0)	22.5 (±6.7)	19.3 (±4.7)	29.1 (±5.5)	25.5 (±3.1)	32.8 (±4.9)	40.5 (±7.3)	41.8 (±4.9)
7	23.0 (±4.4)	23.8 (±5.1)	24.9 (±6.1)	36.6 (±5.6)	36.3 (±6.9)	41.5 (±5.3)	37.0 (±3.5)	46.9 (±5.1)	57.9 (±5.8)	55.0 (±7.1)
8	32.0 (±9.2)	33.1 (±6.4)	34.3 (±5.4)	45.5 (±6.8)	43.2 (±7.3)	45.9 (±5.1)	46.8 (±2.6)	50.7 (±4.5)	61.4 (±5.4)	64.0 (±5.6)

We removed the 1999 data due to space restrictions. These data are available in the YTS booklets from previous years.



Mississippi Youth Tobacco Use {1998-2022} Frequent Cigarette Smoking - Public High School

	2022	2021	2019	2018	2017	2016	2015	2014	2013	2012
TOTAL	0.2 (±0.1)	1.0 (±0.5)	1.4 (±0.7)	1.9 (±0.8)	1.7 (±0.7)	2.7 (±1.0)	2.9 (±1.2)	4.2 (±1.8)	4.3 (±1.4)	6.8 (±2.2)
SEX										
FEMALE	0.1 (±0.3)	0.4 (±0.4)	0.8 (±0.7)	1.3 (±0.7)	1.8 (±0.9)	2.9 (±1.6)	1.8 (±1.2)	3.8 (±2.1)	4.5 (±1.7)	6.2 (±2.8)
MALE	0.3 (±0.4)	1.5 (±0.8)	2.0 (±1.2)	2.4 (±1.4)	1.8 (±0.9)	2.4 (±1.1)	4.1 (±1.7)	4.5 (±2.0)	4.1 (±1.5)	7.3 (±2.6)
RACE										
WHITE	0.1 (±0.2)	1.8 (±1.1)	1.5 (±1.1)	3.0 (±1.5)	2.6 (±1.0)	4.8 (±2.0)	4.4 (±2.0)	7.0 (±3.5)	7.5 (±1.7)	10.9 (±4.3)
BLACK	0.3 (±0.3)	0.3 (±0.3)	0.8 (±0.7)	0.6 (±0.6)	0.8 (±0.6)	0.8 (±0.6)	1.0 (±0.8)	1.3 (±0.8)	1.3 (±1.0)	3.2 (±1.1)
GRADE										
9	0.1 (±0.2)	0.7 (±0.6)	0.8 (±0.9)	1.4 (±1.0)	1.0 (±1.0)	0.9 (±0.7)	1.4 (±1.0)	2.9 (±2.1)	1.5 (±1.7)	2.7 (±1.5)
10	0.2 (±0.3)	1.5 (±1.3)	1.1 (±1.0)	1.1 (±1.2)	1.3 (±1.0)	1.4 (±1.0)	3.3 (±2.3)	2.8 (±1.5)	4.4 (±2.1)	7.1 (±3.5)
11	0.4 (±0.8)	0.5 (±0.8)	1.7 (±1.2)	2.4 (±1.7)	1.1 (±1.0)	2.8 (±2.1)	2.4 (±1.9)	4.6 (±2.3)	4.7 (±2.6)	6.3 (±3.2)
12	0.1 (±0.3)	1.3 (±1.2)	2.0 (±1.8)	2.7 (±1.5)	3.4 (±1.6)	6.1 (±2.7)	4.9 (±2.7)	7.3 (±5.2)	7.4 (±3.1)	12.5 (±7.3)

	2011	2010	2009	2008	2006	2004	2003	2002	2000	1998
TOTAL	6.5 (±1.8)	7.0 (±1.6)	7.8 (±1.9)	7.8 (±2.6)	7.6 (±1.9)	9.4 (±1.7)	10.1 (±1.0)	9.0 (±1.6)	13.8 (±3.0)	14.3 (±3.0)
SEX										
FEMALE	4.5 (±1.8)	6.6 (±1.9)	7.4 (±2.5)	6.9 (±2.8)	5.5 (±2.9)	7.7 (±2.1)	9.1 (±1.2)	7.8 (±1.9)	12.5 (±3.6)	11.6 (±2.3)
MALE	8.6 (±2.4)	7.6 (±1.8)	8.2 (±2.5)	9.0 (±3.3)	9.8 (±2.2)	11.1 (±2.5)	11.0 (±1.4)	10.4 (±2.5)	15.1 (±3.3)	17.3 (±3.3)
RACE										
WHITE	11.0 (±2.8)	11.8 (±2.8)	12.9 (±2.8)	13.2 (±4.4)	10.9 (±3.7)	13.9 (±2.8)	14.9 (±1.7)	13.9 (±2.2)	21.6 (±4.4)	23.2 (±4.5)
BLACK	2.4 (±1.3)	2.5 (±1.2)	2.5 (±1.5)	2.4 (±1.8)	4.3 (±2.2)	4.7 (±1.5)	4.1 (±0.8)	4.4 (±1.7)	4.3 (±2.1)	3.4 (±2.2)
GRADE										
9	3.4 (±1.9)	4.7 (±2.6)	5.4 (±2.1)	5.4 (±2.7)	7.1 (±2.1)	7.8 (±2.1)	7.5 (±1.5)	7.7 (±2.7)	11.1 (±5.1)	8.3 (±2.7)
10	4.9 (±2.8)	6.2 (±2.5)	7.6 (±3.1)	6.2 (±3.3)	5.5 (±4.5)	9.5 (±2.8)	8.6 (±1.3)	7.8 (±1.9)	14.3 (±4.8)	16.7 (±5.0)
11	6.2 (±2.7)	7.5 (±3.1)	8.2 (±3.6)	6.6 (±5.1)	7.0 (±2.7)	9.5 (±2.9)	11.2 (±1.9)	7.9 (±3.3)	17.0 (±6.3)	17.9 (±5.6)
12	12.9 (±4.0)	10.9 (±5.0)	11.3 (±3.5)	14.9 (±4.5)	12.2 (±3.4)	12.2 (±4.3)	14.5 (±2.1)	12.8 (±3.8)	13.9 (±5.9)	16.1 (±5.4)

We removed the 1999 data due to space restrictions. These data are available in the YTS booklets from previous years.



Mississippi Youth Tobacco Use {1998-2022} Frequent Cigarette Smoking - Public Middle School

	2022	2021	2019	2018	2017	2016	2015	2014	2013	2012
TOTAL	0.2 (±0.2)	0.3 (±0.1)	0.4 (±0.3)	0.2 (±0.2)	0.3 (±0.3)	0.4 (±0.3)	0.3 (±0.2)	0.6 (±0.5)	0.7 (±0.4)	0.7 (±0.4)
SEX										
FEMALE	0.0 (±0.0)	0.1 (±0.2)	0.2 (±0.3)	0.2 (±0.2)	0.2 (±0.2)	0.2 (±0.3)	0.1 (±0.2)	0.4 (±0.5)	0.4 (±0.4)	1.0 (±0.7)
MALE	0.4 (±0.4)	0.5 (±0.3)	0.5 (±0.5)	0.2 (±0.2)	0.5 (±0.5)	0.7 (±0.6)	0.5 (±0.5)	0.8 (±0.8)	1.0 (±0.7)	0.3 (±0.4)
RACE										
WHITE	0.0 (±0.0)	0.4 (±0.4)	0.5 (±0.5)	0.4 (±0.3)	0.6 (±0.6)	0.6 (±0.6)	0.6 (±0.4)	1.1 (±1.0)	1.2 (±0.9)	1.0 (±0.8)
BLACK	0.1 (±0.2)	0.3 (±0.4)	0.3 (±0.3)	0.1 (±0.2)	0.0 (±0.0)	0.2 (±0.3)	0.0 (±0.0)	0.0 (±0.0)	0.2 (±0.4)	0.1 (±0.2)
GRADE										
6	0.2 (±0.3)	0.2 (±0.4)	0.4 (±0.5)	0.1 (±0.2)	0.0 (±0.0)	0.4 (±0.5)	0.0 (±0.0)	0.0 (±0.0)	0.5 (±0.7)	0.4 (±0.7)
7	0.0 (±0.0)	0.1 (±0.3)	0.2 (±0.2)	0.4 (±0.4)	0.4 (±0.6)	0.2 (±0.4)	0.4 (±0.3)	0.6 (±0.7)	0.5 (±0.6)	0.4 (±0.4)
8	0.4 (±0.6)	0.5 (±0.6)	0.6 (±0.7)	0.2 (±0.3)	0.5 (±0.6)	0.7 (±0.8)	0.6 (±0.6)	1.2 (±0.9)	1.1 (±1.1)	1.3 (±0.9)

	2011	2010	2009	2008	2006	2004	2003	2002	2000	1998
TOTAL	1.3 (±0.8)	0.9 (±0.4)	1.9 (±0.8)	1.5 (±0.7)	1.9 (±0.9)	3.0 (±0.7)	2.3 (±0.4)	2.7 (±0.9)	3.8 (±1.1)	5.2 (±2.2)
SEX										
FEMALE	0.4 (±0.4)	0.4 (±0.3)	1.8 (±0.8)	0.6 (±0.5)	1.9 (±1.0)	2.6 (±1.2)	1.6 (±0.5)	2.2 (±0.8)	3.6 (±1.2)	3.6 (±2.7)
MALE	2.0 (±1.6)	1.4 (±0.8)	2.0 (±1.2)	2.4 (±1.1)	1.9 (±1.2)	3.2 (±0.8)	2.9 (±0.6)	3.2 (±1.2)	4.1 (±1.3)	6.8 (±3.1)
RACE										
WHITE	1.3 (±0.8)	1.3 (±0.8)	3.2 (±1.7)	2.1 (±1.2)	3.5 (±1.4)	4.1 (±1.6)	2.8 (±0.7)	3.8 (±1.6)	5.9 (±1.9)	6.4 (±3.5)
BLACK	1.0 (±1.3)	0.3 (±0.4)	0.7 (±0.8)	0.8 (±0.6)	0.3 (±0.4)	1.8 (±0.5)	1.6 (±0.5)	1.4 (±0.8)	1.7 (±0.9)	2.6 (±1.8)
GRADE										
6	0.8 (±0.8)	0.6 (±0.6)	0.7 (±0.6)	0.6 (±0.6)	0.7 (±0.7)	1.1 (±0.9)	1.3 (±0.4)	1.3 (±0.8)	2.8 (±2.1)	1.2 (±0.6)
7	1.3 (±0.7)	0.7 (±0.6)	2.1 (±1.1)	1.2 (±0.8)	1.2 (±0.8)	3.0 (±1.2)	1.8 (±0.4)	3.4 (±1.0)	4.0 (±1.8)	5.1 (±3.2)
8	0.8 (±0.5)	1.4 (±1.0)	3.0 (±1.6)	2.7 (±1.6)	3.5 (±1.9)	4.7 (±2.0)	3.8 (±1.0)	5.2 (±2.2)	4.8 (±1.5)	7.1 (±3.1)

We removed the 1999 data due to space restrictions. These data are available in the YTS booklets from previous years.



Mississippi Youth Tobacco Use {1998-2022} Current Smokeless Tobacco Use - Public High School

	2022	2021	2019	2018	2017	2016	2015	2014	2013	2012
TOTAL	2.0 (±0.7)	2.7 (±1.0)	4.2 (±1.0)	5.4 (±1.6)	6.6 (±1.5)	7.1 (±1.7)	7.7 (±2.2)	8.0 (±1.8)	8.0 (±2.1)	9.6 (±2.9)
SEX										
FEMALE	0.6 (±0.6)	0.8 (±0.4)	0.8 (±0.7)	1.3 (±0.7)	3.1 (±1.7)	1.6 (±1.0)	1.5 (±1.1)	2.0 (±1.1)	2.4 (±1.3)	1.7 (±0.8)
MALE	3.4 (±1.3)	4.6 (±1.9)	7.8 (±1.6)	9.6 (±3.1)	10.2 (±2.6)	12.5 (±2.8)	13.9 (±3.7)	13.9 (±3.3)	13.6 (±3.3)	17.6 (±5.3)
RACE										
WHITE	2.9 (±1.5)	4.7 (±1.6)	6.4 (±1.6)	8.6 (±2.5)	10.1 (±1.8)	12.6 (±2.5)	13.5 (±2.8)	13.3 (±2.6)	14.5 (±3.1)	16.8 (±3.4)
BLACK	1.1 (±0.9)	1.1 (±0.7)	1.7 (±0.7)	2.0 (±1.5)	3.1 (±1.7)	1.7 (±1.0)	1.7 (±1.6)	2.7 (±1.1)	2.2 (±1.3)	3.0 (±1.3)
GRADE										
9	2.4 (±1.3)	2.2 (±1.2)	4.2 (±2.3)	3.8 (±1.8)	5.5 (±1.7)	6.2 (±1.5)	6.4 (±2.4)	6.0 (±2.5)	7.9 (±3.9)	7.0 (±2.4)
10	2.3 (±1.6)	2.5 (±1.6)	3.4 (±1.6)	5.3 (±2.4)	6.4 (±2.1)	5.7 (±2.4)	9.4 (±4.5)	5.9 (±3.4)	8.6 (±3.4)	13.3 (±6.6)
11	0.3 (±0.6)	2.9 (±2.1)	3.8 (±1.8)	6.2 (±3.3)	5.7 (±3.7)	8.3 (±3.3)	4.6 (±3.1)	10.5 (±3.0)	6.5 (±3.5)	6.4 (±2.3)
12	2.9 (±2.4)	3.3 (±2.6)	5.7 (±3.2)	6.2 (±2.3)	8.9 (±3.1)	8.2 (±4.1)	10.1 (±5.8)	10.6 (±5.6)	8.9 (±3.8)	12.1 (±7.6)

	2011	2010	2009	2008	2006	2004	2003	2002	2000	1998
TOTAL	9.9 (±2.3)	9.6 (±2.9)	9.8 (±2.3)	13.8 (±3.5)	9.7 (±2.3)	11.8 (±2.3)	10.4 (±1.3)	9.6 (±1.7)	9.1 (±2.3)	9.4 (±2.8)
SEX										
FEMALE	2.0 (±1.0)	2.7 (±1.3)	3.4 (±1.4)	7.8 (±3.5)	5.3 (±2.7)	4.5 (±1.2)	2.8 (±0.8)	4.2 (±1.5)	1.3 (±0.8)	1.3 (±1.7)
MALE	18.0 (±4.6)	16.6 (±5.2)	16.7 (±4.0)	20.1 (±4.8)	13.9 (±6.7)	18.4 (±4.3)	18.2 (±2.3)	15.1 (±2.9)	16.9 (±4.3)	18.1 (±4.3)
RACE										
WHITE	17.3 (±3.5)	15.9 (±5.0)	16.7 (±3.3)	19.1 (±4.1)	13.8 (±4.0)	17.3 (±2.9)	15.1 (±2.0)	14.5 (±1.6)	14.6 (±3.7)	16.0 (±4.0)
BLACK	3.2 (±1.2)	3.8 (±1.2)	2.9 (±1.6)	7.8 (±5.8)	5.4 (±1.9)	5.9 (±1.6)	4.6 (±1.1)	4.4 (±1.5)	2.2 (±0.9)	1.5 (±1.5)
GRADE										
9	9.6 (±4.0)	8.1 (±3.0)	10.0 (±3.8)	12.5 (±4.4)	8.8 (±8.0)	10.8 (±3.3)	10.0 (±1.5)	8.4 (±2.3)	8.8 (±3.5)	9.1 (±3.5)
10	7.8 (±2.6)	10.4 (±3.7)	11.4 (±3.3)	13.3 (±5.3)	14.4 (±4.0)	12.0 (±2.7)	11.9 (±2.0)	9.0 (±2.5)	7.8 (±3.5)	11.7 (±4.5)
11	10.8 (±4.8)	12.0 (±4.7)	7.4 (±2.8)	12.4 (±7.5)	5.9 (±3.2)	11.7 (±4.3)	10.0 (±2.2)	12.5 (±3.0)	8.4 (±4.4)	6.8 (±5.1)
12	12.0 (±3.0)	8.1 (±4.6)	9.9 (±3.4)	16.6 (±5.5)	8.9 (±3.7)	13.0 (±5.2)	9.8 (±1.9)	8.5 (±3.1)	11.6 (±5.3)	8.6 (±2.8)

We removed the 1999 data due to space restrictions. These data are available in the YTS booklets from previous years.





Mississippi Youth Tobacco Use {1998-2022} Current Smokeless Tobacco Use - Public Middle School

	2022	2021	2019	2018	2017	2016	2015	2014	2013	2012
TOTAL	1.3 (±0.5)	1.9 (±0.9)	2.5 (±1.0)	1.8 (±0.7)	3.0 (±1.7)	4.0 (±1.4)	3.6 (±1.1)	4.5 (±1.8)	4.4 (±1.8)	4.8 (±1.9)
SEX										
FEMALE	1.0 (±0.7)	1.3 (±0.9)	1.6 (±1.2)	0.6 (±0.5)	1.5 (±0.9)	1.4 (±1.1)	1.1 (±0.7)	1.3 (±0.9)	1.0 (±0.8)	1.5 (±0.9)
MALE	1.7 (±0.8)	2.7 (±1.2)	3.3 (±1.6)	3.1 (±1.0)	4.6 (±2.7)	6.4 (±2.6)	5.9 (±2.1)	7.7 (±3.3)	7.8 (±3.1)	8.1 (±3.1)
RACE										
WHITE	1.9 (±1.1)	3.5 (±1.8)	4.1 (±1.8)	2.7 (±1.1)	4.9 (±2.6)	6.1 (±2.2)	5.4 (±1.6)	6.2 (±3.4)	8.3 (±3.1)	9.0 (±2.7)
BLACK	0.6 (±0.6)	0.7 (±0.7)	1.1 (±1.0)	0.8 (±0.5)	1.4 (±1.1)	1.8 (±1.4)	1.7 (±1.0)	3.0 (±1.7)	0.8 (±0.8)	1.4 (±1.0)
GRADE										
6	0.6 (±0.5)	2.1 (±1.8)	2.1 (±1.8)	1.7 (±1.0)	1.4 (±1.0)	2.8 (±1.8)	1.9 (±1.2)	2.6 (±2.3)	3.0 (±1.7)	4.0 (±3.7)
7	1.7 (±1.1)	1.7 (±1.0)	2.1 (±1.2)	1.5 (±1.0)	2.3 (±2.1)	3.4 (±2.0)	3.9 (±1.4)	5.7 (±3.4)	3.6 (±2.3)	3.3 (±2.0)
8	1.6 (±1.2)	2.1 (±1.3)	3.4 (±2.1)	2.3 (±1.6)	5.5 (±3.0)	5.6 (±2.2)	4.7 (±2.4)	5.4 (±3.2)	6.8 (±3.4)	7.4 (±3.1)

	2011	2010	2009	2008	2006	2004	2003	2002	2000	1998
TOTAL	5.5 (±1.5)	6.4 (±2.1)	5.3 (±1.9)	7.2 (±1.6)	7.7 (±2.2)	8.2 (±1.3)	6.4 (±1.0)	8.7 (±1.0)	7.5 (±2.0)	9.6 (±2.1)
SEX										
FEMALE	1.8 (±0.8)	2.5 (±1.4)	1.9 (±1.3)	1.6 (±0.7)	4.1 (±1.5)	5.1 (±1.0)	2.8 (±0.5)	4.6 (±0.9)	2.8 (±1.3)	4.2 (±1.8)
MALE	9.0 (±3.0)	10.2 (±3.3)	8.6 (±3.0)	12.3 (±2.7)	11.1 (±3.7)	11.6 (±2.4)	9.8 (±1.9)	12.6 (±2.1)	11.8 (±4.0)	14.8 (±3.9)
RACE										
WHITE	8.7 (±2.7)	10.8 (±2.5)	9.3 (±3.0)	10.4 (±2.1)	12.1 (±2.8)	10.6 (±2.8)	8.3 (±1.9)	11.2 (±2.1)	12.0 (±3.5)	12.7 (±3.1)
BLACK	2.0 (±0.8)	2.4 (±1.4)	1.6 (±0.9)	3.9 (±1.7)	3.7 (±1.9)	6.0 (±1.0)	3.8 (±0.6)	4.7 (±1.2)	2.5 (±1.0)	4.8 (±1.9)
GRADE										
6	3.9 (±2.7)	5.3 (±4.1)	4.1 (±2.6)	4.7 (±2.4)	5.3 (±2.2)	5.7 (±1.4)	5.4 (±1.0)	8.7 (±1.9)	5.5 (±2.2)	6.5 (±2.5)
7	5.7 (±2.5)	7.2 (±2.7)	4.6 (±2.2)	7.5 (±3.0)	6.3 (±2.9)	8.2 (±1.9)	5.8 (±1.0)	7.6 (±1.6)	9.5 (±4.1)	8.7 (±3.8)
8	6.7 (±2.8)	6.8 (±2.5)	7.3 (±4.2)	9.5 (±3.3)	10.8 (±3.4)	10.8 (±3.4)	7.8 (±2.0)	11.0 (±3.0)	7.4 (±2.7)	12.0 (±4.2)

We removed the 1999 data due to space restrictions. These data are available in the YTS booklets from previous years.



Mississippi Youth Tobacco Use {1998-2022} Ever Tried Smokeless Tobacco - Public High School

	2022	2021	2019	2018	2017	2016	2015	2014	2013	2012
TOTAL	5.7 (±1.3)	7.7 (±2.6)	9.9 (±2.1)	12.9 (±2.7)	15.0 (±3.2)	14.2 (±2.5)	16.2 (±4.0)	16.0 (±3.0)	15.8 (±3.8)	17.8 (±3.8)
SEX										
FEMALE	2.3 (±1.2)	2.2 (±1.2)	3.8 (±1.7)	5.3 (±1.4)	9.1 (±2.8)	5.9 (±2.5)	5.1 (±2.3)	6.7 (±1.9)	6.4 (±2.0)	6.6 (±1.6)
MALE	9.1 (±2.0)	13.0 (±4.7)	16.0 (±3.3)	20.8 (±4.4)	21.2 (±5.5)	22.3 (±3.4)	27.7 (±5.6)	25.5 (±5.0)	25.3 (±5.5)	29.3 (±6.2)
RACE										
WHITE	9.6 (±2.8)	13.1 (±4.0)	15.1 (±3.0)	21.8 (±3.6)	22.2 (±2.6)	22.7 (±3.7)	28.1 (±4.5)	27.5 (±3.4)	27.8 (±5.3)	29.4 (±3.8)
BLACK	2.0 (±1.0)	2.8 (±1.1)	4.1 (±1.2)	4.6 (±1.6)	7.8 (±2.8)	6.1 (±2.0)	4.6 (±2.2)	5.3 (±1.6)	5.1 (±2.2)	7.0 (±1.9)
GRADE										
9	4.4 (±1.6)	7.2 (±2.9)	8.0 (±3.4)	9.1 (±3.0)	11.3 (±2.6)	12.1 (±2.4)	13.7 (±4.6)	12.3 (±4.3)	14.4 (±6.7)	13.9 (±3.9)
10	6.4 (±2.9)	6.0 (±3.5)	10.4 (±3.2)	12.5 (±4.5)	14.7 (±3.2)	14.1 (±4.0)	18.4 (±5.3)	15.5 (±5.4)	16.3 (±6.3)	21.8 (±7.9)
11	5.7 (±3.0)	7.9 (±3.7)	9.5 (±3.4)	17.8 (±5.4)	15.4 (±6.8)	13.6 (±3.7)	13.3 (±6.4)	18.6 (±5.8)	14.6 (±5.4)	16.8 (±4.7)
12	6.9 (±3.4)	10.1 (±5.5)	12.0 (±5.6)	12.7 (±3.7)	19.5 (±5.8)	17.0 (±6.9)	19.7 (±8.5)	18.9 (±5.5)	18.4 (±5.5)	19.3 (±8.2)

	2011	2010	2009	2008	2006	2004	2003	2002	2000	1998
TOTAL	19.5 (±4.1)	20.2 (±3.6)	18.6 (±3.9)	22.8 (±3.3)	19.1 (±4.9)	22.6 (±3.1)	22.2 (±1.7)	20.7 (±2.6)	25.0 (±4.2)	26.2 (±4.2)
SEX										
FEMALE	7.5 (±1.9)	8.4 (±2.7)	9.5 (±2.8)	12.6 (±2.5)	7.8 (±4.1)	9.5 (±2.0)	10.0 (±1.1)	10.2 (±1.5)	10.8 (±2.6)	11.4 (±3.7)
MALE	32.0 (±7.5)	32.3 (±5.8)	28.3 (±6.0)	34.0 (±6.1)	30.7 (±7.0)	35.3 (±5.2)	35.3 (±3.1)	32.4 (±5.2)	40.2 (±6.9)	42.2 (±6.0)
RACE										
WHITE	33.1 (±5.1)	33.5 (±4.3)	30.7 (±4.2)	32.1 (±4.4)	31.5 (±4.2)	32.8 (±3.4)	31.1 (±2.1)	30.7 (±3.1)	36.0 (±5.6)	38.5 (±5.8)
BLACK	7.4 (±2.5)	8.3 (±2.5)	6.6 (±2.6)	13.1 (±3.6)	7.3 (±4.9)	12.0 (±2.2)	12.0 (±1.5)	11.0 (±1.8)	12.8 (±2.4)	11.6 (±2.9)
GRADE										
9	18.7 (±6.0)	15.2 (±4.9)	17.8 (±5.1)	23.3 (±6.5)	20.7 (±5.3)	20.4 (±4.0)	21.5 (±2.1)	19.4 (±4.1)	23.7 (±5.4)	25.7 (±5.4)
10	16.7 (±6.1)	22.7 (±5.3)	18.9 (±5.4)	25.3 (±7.2)	19.3 (±9.6)	21.3 (±3.5)	22.4 (±2.0)	21.8 (±4.0)	21.9 (±6.4)	27.0 (±6.9)
11	20.7 (±7.5)	20.9 (±4.6)	17.6 (±5.4)	18.4 (±6.7)	17.8 (±5.8)	24.8 (±6.3)	23.0 (±3.1)	20.7 (±3.9)	26.7 (±6.4)	25.4 (±7.6)
12	23.1 (±5.5)	23.4 (±9.1)	20.3 (±6.3)	23.2 (±5.2)	18.1 (±5.4)	25.1 (±5.7)	21.8 (±3.2)	21.2 (±4.6)	28.3 (±7.4)	25.8 (±5.4)

We removed the 1999 data due to space restrictions. These data are available in the YTS booklets from previous years.





Mississippi Youth Tobacco Use {1998-2022} Ever Tried Smokeless Tobacco - Public Middle School

	2022	2021	2019	2018	2017	2016	2015	2014	2013	2012
TOTAL	4.9 (±2.4)	7.2 (±2.5)	7.2 (±2.4)	6.0 (±1.8)	8.4 (±2.5)	7.9 (±2.1)	8.6 (±2.3)	8.8 (±2.4)	9.5 (±2.8)	11.4 (±3.6)
SEX										
FEMALE	3.1 (±1.5)	4.7 (±2.5)	4.3 (±2.2)	3.8 (±1.6)	5.2 (±2.5)	3.5 (±1.4)	4.9 (±1.7)	4.1 (±1.7)	4.3 (±2.0)	5.5 (±2.2)
MALE	6.5 (±3.7)	9.8 (±3.4)	10.1 (±3.7)	8.2 (±2.7)	11.4 (±2.9)	12.1 (±3.8)	12.1 (±3.8)	13.5 (±4.3)	14.4 (±4.1)	17.0 (±5.5)
RACE										
WHITE	8.8 (±3.0)	12.9 (±4.0)	11.9 (±3.9)	9.7 (±2.4)	11.8 (±4.0)	12.8 (±3.3)	14.8 (±2.7)	12.6 (±4.2)	15.9 (±4.2)	21.3 (±4.8)
BLACK	1.3 (±0.6)	2.8 (±1.4)	3.3 (±2.0)	2.2 (±1.2)	5.0 (±2.2)	2.9 (±1.1)	2.4 (±1.4)	5.2 (±2.1)	3.6 (±1.7)	2.4 (±1.2)
GRADE										
6	4.2 (±2.4)	7.0 (±3.1)	5.2 (±3.3)	5.1 (±2.3)	4.7 (±2.3)	5.0 (±2.9)	4.9 (±2.5)	5.9 (±4.0)	8.8 (±3.8)	8.1 (±5.9)
7	4.0 (±1.4)	7.5 (±3.5)	6.1 (±2.6)	4.2 (±1.9)	8.0 (±4.1)	7.4 (±2.6)	9.6 (±2.7)	9.5 (±4.1)	6.9 (±3.4)	10.3 (±5.5)
8	6.4 (4.9)	7.2 (3.2)	10.8 (4.5)	8.7 (3.9)	12.6 (4.6)	11.1 (±3.8)	11.0 (±4.8)	11.1 (±4.5)	12.8 (±4.4)	15.8 (±4.6)

	2011	2010	2009	2008	2006	2004	2003	2002	2000	1998
TOTAL	11.4 (±2.4)	11.1 (±3.3)	11.8 (±2.8)	14.4 (±1.7)	15.5 (±3.8)	14.7 (±2.7)	14.1 (±1.7)	17.8 (±1.4)	19.7 (±2.7)	18.1 (±3.1)
SEX										
FEMALE	5.9 (±1.6)	5.1 (±2.4)	6.3 (±1.9)	6.9 (±1.4)	9.2 (±2.9)	9.6 (±2.2)	8.1 (±0.9)	9.6 (±1.6)	9.7 (±1.8)	7.2 (±2.0)
MALE	16.6 (±4.3)	16.8 (±4.9)	17.1 (±4.6)	21.6 (±3.3)	21.3 (±5.9)	20.2 (±3.7)	20.0 (±3.0)	26.2 (±2.8)	29.4 (±4.7)	28.5 (±5.5)
RACE										
WHITE	17.5 (±4.1)	18.4 (±3.7)	19.3 (±4.0)	20.4 (±2.5)	23.9 (±3.9)	19.7 (±4.3)	17.8 (±3.2)	21.8 (±2.8)	26.7 (±4.2)	24.0 (±3.1)
BLACK	5.6 (±2.1)	4.2 (±2.1)	4.9 (±1.8)	8.6 (±2.3)	7.9 (±3.0)	10.0 (±2.1)	10.1 (±0.9)	12.4 (±2.0)	11.7 (±2.4)	10.5 (±3.2)
GRADE										
6	9.4 (±4.3)	8.2 (±4.2)	8.0 (±3.8)	10.2 (±2.9)	12.1 (±3.3)	10.4 (±2.8)	12.1 (±1.8)	17.3 (±3.1)	13.7 (±3.2)	12.9 (±4.9)
7	10.9 (±3.6)	12.8 (±4.5)	11.6 (±3.7)	14.5 (±3.5)	12.6 (±5.3)	14.4 (±3.6)	13.4 (±2.2)	17.3 (±2.6)	23.3 (±5.0)	19.0 (±5.5)
8	13.4 (±5.0)	12.1 (±5.0)	15.9 (±5.6)	18.9 (±2.6)	21.2 (±6.1)	19.3 (±4.1)	16.8 (±3.0)	20.2 (±4.5)	22.2 (±4.1)	20.7 (±5.3)

We removed the 1999 data due to space restrictions. These data are available in the YTS booklets from previous years.



Mississippi Youth Tobacco Use {1998-2022} Frequent Smokeless Tobacco Use - Public High School

	2022	2021	2019	2018	2017	2016	2015	2014	2013	2012
TOTAL	0.2 (±0.2)	0.9 (±0.5)	1.3 (±0.7)	1.8 (±0.8)	2.8 (±1.0)	3.4 (±1.0)	3.6 (±1.2)	3.7 (±1.5)	3.5 (±1.2)	5.1 (±2.6)
SEX										
FEMALE	0.2 (±0.4)	0.0 (±0.0)	0.1 (±0.2)	0.5 (±0.5)	1.2 (±0.8)	0.1 (±0.2)	0.2 (±0.3)	0.2 (±0.2)	0.2 (±0.3)	0.3 (±0.4)
MALE	0.2 (±0.3)	1.9 (±1.0)	2.5 (±1.4)	3.1 (±1.6)	4.6 (±1.8)	6.5 (±1.9)	6.9 (±2.3)	7.2 (±3.0)	6.9 (±2.5)	9.9 (±5.0)
RACE										
WHITE	0.2 (±0.3)	1.5 (±0.7)	1.2 (±0.9)	3.0 (±1.5)	4.2 (±1.1)	6.5 (±2.1)	6.6 (±1.6)	6.9 (±2.4)	6.8 (±2.4)	9.3 (±3.7)
BLACK	0.0 (±0.0)	0.5 (±0.6)	0.9 (±0.7)	0.6 (±0.5)	1.2 (±1.1)	0.4 (±0.5)	0.4 (±0.5)	0.5 (±0.5)	0.5 (±0.5)	1.3 (±1.0)
GRADE										
9	0.1 (±0.1)	0.3 (±0.6)	1.4 (±1.2)	1.5 (±1.0)	2.0 (±1.5)	2.3 (±1.2)	2.5 (±1.8)	1.3 (±1.0)	3.3 (±2.7)	2.0 (±1.1)
10	0.4 (±0.5)	1.0 (±1.0)	0.4 (±0.7)	1.2 (±0.8)	2.8 (±1.8)	2.9 (±1.7)	3.4 (±2.3)	1.8 (±1.4)	3.8 (±1.8)	8.1 (±5.7)
11	0.0 (±0.0)	0.7 (±0.8)	1.4 (±1.1)	1.9 (±1.8)	1.7 (±1.5)	3.8 (±1.8)	2.3 (±1.8)	5.3 (±2.8)	2.9 (±1.6)	3.7 (±1.9)
12	0.5 (±0.9)	1.9 (±1.8)	2.1 (±1.7)	2.6 (±1.7)	4.8 (±1.8)	4.9 (±2.3)	6.2 (±3.8)	7.6 (±5.1)	4.1 (±2.5)	7.0 (±7.5)

	2011	2010	2009	2008	2006	2004	2003	2002	2000	1998
TOTAL	4.6 (±1.6)	4.5 (±2.3)	4.3 (±1.5)	4.7 (±1.5)	2.8 (±1.4)	4.2 (±1.3)	3.9 (±0.7)	3.3 (±1.0)	3.9 (±1.3)	3.7 (±1.8)
SEX										
FEMALE	0.3 (±0.6)	0.5 (±0.5)	0.5 (±0.4)	1.2 (±0.8)	0.3 (±0.3)	0.5 (±0.3)	0.5 (±0.3)	0.9 (±0.5)	0.3 (±0.4)	0.4 (±0.5)
MALE	9.0 (±3.0)	8.6 (±4.4)	8.4 (±3.1)	8.6 (±2.9)	5.5 (±2.9)	7.6 (±2.7)	7.4 (±1.2)	6.1 (±1.8)	7.6 (±2.5)	7.3 (±3.3)
RACE										
WHITE	8.9 (±2.6)	8.0 (±3.8)	7.7 (±2.6)	7.8 (±2.6)	5.3 (±1.9)	7.3 (±2.3)	6.6 (±1.1)	6.3 (±1.5)	6.7 (±2.0)	6.4 (±3.1)
BLACK	0.8 (±0.8)	1.4 (±0.7)	0.8 (±1.0)	1.8 (±1.7)	0.2 (±0.4)	1.1 (±0.7)	0.8 (±0.4)	0.6 (±0.5)	0.5 (±0.6)	0.2 (±1.0)
GRADE										
9	3.4 (±2.3)	3.3 (±2.2)	3.8 (±2.1)	4.4 (±2.0)	2.1 (±2.2)	2.9 (±1.8)	2.9 (±0.8)	2.7 (±1.1)	3.8 (±2.2)	2.2 (±1.6)
10	3.8 (±2.2)	3.3 (±2.5)	4.9 (±2.2)	4.5 (±3.2)	2.7 (±2.0)	3.0 (±1.5)	4.4 (±1.0)	3.2 (±1.5)	3.7 (±2.3)	5.5 (±4.5)
11	6.1 (±3.3)	5.9 (±3.8)	4.3 (±2.2)	4.4 (±4.0)	2.2 (±2.0)	5.7 (±2.8)	4.3 (±1.4)	4.2 (±1.9)	3.3 (±3.0)	3.7 (±3.1)
12	5.7 (±2.5)	6.1 (±4.2)	4.0 (±2.5)	5.8 (±3.0)	4.7 (±2.5)	6.4 (±2.6)	4.4 (±1.4)	3.4 (±1.8)	5.1 (±2.8)	3.5 (±2.3)

We removed the 1999 data due to space restrictions. These data are available in the YTS booklets from previous years.





Mississippi Youth Tobacco Use {1998-2022} Frequent Smokeless Tobacco Use - Public Middle School

	2022	2021	2019	2018	2017	2016	2015	2014	2013	2012
TOTAL	0.1 (±0.1)	0.3 (±0.3)	0.4 (±0.4)	0.3 (±0.3)	0.8 (±0.7)	0.9 (±0.4)	0.9 (±0.5)	1.0 (±0.9)	1.5 (±1.0)	0.8 (±0.5)
SEX										
FEMALE	0.0 (±0.0)	0.1 (±0.2)	0.0 (±0.0)	0.1 (±0.3)	0.3 (±0.4)	0.3 (±0.3)	0.1 (±0.1)	0.0 (±0.0)	0.0 (±0.0)	0.2 (±0.2)
MALE	0.1 (±0.2)	0.6 (±0.5)	0.7 (±0.7)	0.5 (±0.5)	1.3 (±1.3)	1.3 (±0.7)	1.8 (±0.9)	2.0 (±1.7)	3.0 (±2.0)	1.4 (±0.9)
RACE										
WHITE	0.1 (±0.2)	0.6 (±0.5)	0.6 (±0.7)	0.4 (±0.4)	1.6 (±1.4)	1.4 (±0.7)	1.9 (±1.0)	1.9 (±1.9)	3.1 (±2.0)	1.6 (±0.9)
BLACK	0.0 (±0.0)	0.2 (±0.3)	0.1 (±0.2)	0.1 (±0.2)	0.0 (±0.0)	0.1 (±0.2)	0.0 (±0.0)	0.1 (±0.3)	0.1 (±0.2)	0.1 (±0.2)
GRADE										
6	0.0 (±0.0)	0.2 (±0.4)	0.0 (±0.0)	0.3 (±0.4)	0.2 (±0.3)	0.2 (±0.3)	0.1 (±0.1)	0.2 (±0.4)	0.6 (±0.9)	0.0 (±0.0)
7	0.0 (±0.0)	0.0 (±0.0)	0.5 (±0.5)	0.2 (±0.4)	1.3 (±1.4)	1.3 (±0.9)	1.1 (±0.9)	0.8 (±0.7)	0.8 (±0.8)	0.4 (±0.5)
8	0.2 (±0.3)	0.8 (±0.8)	0.7 (±0.9)	0.5 (±0.6)	0.9 (±1.0)	1.0 (±0.7)	1.6 (±1.2)	2.1 (±2.2)	3.2 (±2.3)	2.0 (±1.1)

	2011	2010	2009	2008	2006	2004	2003	2002	2000	1998
TOTAL	1.5 (±0.8)	1.1 (±0.4)	1.0 (±0.8)	1.7 (±0.8)	2.2 (±1.2)	1.3 (±0.5)	1.2 (±0.5)	2.1 (±0.6)	1.5 (±0.9)	2.2 (±1.1)
SEX										
FEMALE	0.3 (±0.4)	0.1 (±0.2)	0.2 (±0.3)	0.6 (±0.4)	0.3 (±0.3)	0.3 (±0.2)	0.4 (±0.2)	0.8 (±0.5)	0.2 (±0.5)	0.9 (±0.9)
MALE	2.6 (±1.6)	2.1 (±0.8)	1.8 (±1.5)	2.8 (±1.5)	4.1 (±2.2)	2.3 (±1.0)	2.1 (±0.8)	3.3 (±1.0)	2.6 (±1.8)	3.5 (±2.1)
RACE										
WHITE	2.3 (±1.7)	1.9 (±0.9)	2.0 (±1.6)	2.8 (±1.4)	4.2 (±2.0)	1.7 (±1.0)	1.8 (±0.7)	2.5 (±0.9)	2.6 (±1.7)	2.4 (±2.2)
BLACK	0.3 (±0.3)	0.5 (±0.5)	0.1 (±0.2)	0.4 (±0.1)	0.5 (±0.6)	0.9 (±0.6)	0.5 (±0.2)	1.4 (±0.8)	0.0 (±0.0)	1.0 (±1.1)
GRADE										
6	0.9 (±0.9)	0.3 (±0.5)	0.1 (±0.2)	1.0 (±0.8)	1.6 (±1.3)	0.3 (±0.4)	0.8 (±0.4)	1.0 (±0.6)	1.2 (±2.1)	0.5 (±0.4)
7	1.7 (±1.3)	1.2 (±0.9)	1.0 (±0.8)	1.5 (±1.0)	1.2 (±1.0)	1.7 (±1.0)	1.2 (±0.5)	2.1 (±0.8)	1.3 (±1.1)	1.7 (±1.5)
8	1.6 (±1.4)	1.9 (±1.0)	2.0 (±2.1)	2.6 (±1.7)	3.7 (±2.7)	1.7 (±1.1)	1.7 (±1.1)	3.7 (±1.2)	2.0 (±1.5)	3.0 (±1.8)

We removed the 1999 data due to space restrictions. These data are available in the YTS booklets from previous years.



Mississippi Youth Tobacco Use {1998-2022} Current Cigar Smoking - Public High School

	2022	2021	2019	2018	2017	2016	2015	2014	2013	2012
<b>TOTAL</b>	6.3 (±1.7)	6.4 (±1.1)	10.9 (±1.8)	10.3 (±2.1)	8.4 (±1.7)	9.2 (±1.9)	8.7 (±1.4)	10.3 (±1.9)	10.9 (±1.9)	11.9 (±2.0)
<b>SEX</b>										
FEMALE	5.6 (±2.0)	5.8 (±1.8)	9.3 (±2.9)	10.1 (±2.9)	7.5 (±2.6)	7.3 (±2.1)	5.5 (±1.8)	7.6 (±2.6)	8.0 (±2.2)	9.3 (±2.4)
MALE	7.0 (±1.7)	7.1 (±1.4)	12.6 (±2.6)	10.6 (±2.4)	9.3 (±2.3)	11.2 (±2.4)	12.2 (±2.2)	12.6 (±2.5)	13.8 (±3.3)	14.4 (±3.6)
<b>RACE</b>										
WHITE	3.2 (±1.5)	4.9 (±1.4)	8.4 (±2.6)	8.5 (±2.8)	9.4 (±2.2)	10.0 (±2.3)	10.0 (±2.1)	9.5 (±2.0)	12.3 (±2.5)	10.7 (±2.7)
BLACK	9.1 (±2.0)	8.2 (±1.8)	13.3 (±2.8)	11.6 (±2.7)	6.8 (±2.0)	8.5 (±2.4)	6.7 (±2.1)	11.0 (±3.2)	10.0 (±2.5)	12.5 (±2.8)
<b>GRADE</b>										
9	4.1 (±2.1)	5.5 (±2.2)	9.1 (±4.1)	9.7 (±2.8)	5.7 (±2.0)	7.2 (±2.5)	6.3 (±2.5)	7.4 (±2.7)	6.4 (±2.7)	9.1 (±3.0)
10	5.7 (±2.3)	5.5 (±2.6)	8.9 (±3.3)	10.4 (±3.5)	6.9 (±1.8)	9.6 (±3.5)	10.1 (±3.7)	10.7 (±4.6)	9.5 (±3.0)	14.0 (±5.2)
11	7.8 (±3.4)	6.8 (±3.0)	10.7 (±3.6)	9.9 (±4.5)	8.1 (±3.9)	9.3 (±3.2)	8.1 (±2.6)	10.7 (±3.3)	14.7 (±5.2)	10.9 (±3.2)
12	8.6 (±4.4)	8.2 (±2.8)	15.6 (±5.3)	11.3 (±3.4)	13.3 (±3.3)	11.0 (±4.5)	10.9 (±4.1)	13.0 (±3.7)	14.5 (±4.3)	14.1 (±6.5)

	2011	2010	2009	2008	2006	2004	2003	2002	2000	1998
<b>TOTAL</b>	14.2 (±2.3)	13.8 (±2.0)	13.8 (±2.2)	16.3 (±3.7)	13.6 (±4.0)	18.0 (±1.8)	17.8 (±1.2)	N/A	18.6 (±2.9)	22.3 (±3.9)
<b>SEX</b>										
FEMALE	8.7 (±1.9)	11.0 (±2.0)	9.3 (±2.9)	11.3 (±3.9)	8.5 (±4.5)	13.4 (±2.4)	12.9 (±1.3)	N/A	11.2 (±3.1)	13.8 (±3.3)
MALE	19.8 (±3.1)	16.9 (±3.2)	18.3 (±3.1)	21.3 (±4.6)	18.9 (±4.5)	22.1 (±2.4)	22.7 (±1.8)	N/A	26.2 (±3.7)	31.1 (±5.4)
<b>RACE</b>										
WHITE	15.1 (±2.7)	15.5 (±2.7)	14.9 (±3.0)	16.0 (±4.3)	14.4 (±4.5)	20.7 (±3.1)	18.7 (±1.9)	N/A	19.6 (±4.1)	23.5 (±4.4)
BLACK	13.2 (±3.4)	12.0 (±2.1)	12.4 (±3.7)	15.2 (±5.6)	12.6 (±3.8)	15.0 (±2.6)	15.6 (±1.6)	N/A	15.7 (±3.5)	20.1 (±5.1)
<b>GRADE</b>										
9	10.3 (±4.7)	10.8 (±2.6)	11.0 (±3.8)	13.7 (±4.0)	11.4 (±3.1)	17.2 (±3.8)	17.4 (±1.6)	N/A	20.7 (±4.1)	18.9 (±5.6)
10	15.9 (±4.4)	13.6 (±3.0)	15.2 (±3.2)	15.3 (±4.9)	12.0 (±7.4)	17.5 (±4.2)	16.8 (±1.8)	N/A	16.8 (±3.9)	24.7 (±8.5)
11	14.4 (±5.1)	16.5 (±4.2)	12.8 (±4.2)	13.2 (±10.1)	16.3 (±4.7)	19.1 (±3.7)	19.2 (±2.9)	N/A	18.6 (±6.5)	23.8 (±5.4)
12	17.0 (±5.8)	15.4 (±3.9)	17.1 (±4.0)	23.1 (±5.6)	16.2 (±4.3)	19.0 (±4.3)	17.9 (±1.9)	N/A	16.4 (±4.6)	22.0 (±6.1)

We removed the 1999 data due to space restrictions. These data are available in the YTS booklets from previous years.



Mississippi Youth Tobacco Use {1998-2022} Current Cigar Smoking - Public Middle School

	2022	2021	2019	2018	2017	2016	2015	2014	2013	2012
TOTAL	1.9 (±0.9)	3.2 (±1.7)	4.1 (±1.5)	4.0 (±1.3)	2.9 (±1.1)	3.5 (±1.1)	2.9 (±0.9)	5.4 (±2.3)	4.2 (±1.3)	4.2 (±1.5)
SEX										
FEMALE	2.1 (±1.5)	3.3 (±1.7)	2.8 (±1.6)	4.2 (±1.7)	2.4 (±1.4)	2.0 (±1.2)	2.6 (±1.5)	2.6 (±1.3)	2.4 (±1.3)	2.7 (±1.0)
MALE	1.8 (±0.8)	3.1 (±2.1)	5.2 (±2.0)	3.7 (±1.9)	3.5 (±1.4)	5.0 (±1.8)	3.2 (±0.9)	8.1 (±4.1)	5.9 (±1.6)	5.5 (±2.3)
RACE										
WHITE	0.5 (±0.6)	2.5 (±1.7)	3.4 (±2.1)	2.4 (±1.2)	3.1 (±1.3)	2.6 (±1.7)	2.2 (±1.1)	3.4 (±2.0)	2.6 (±0.9)	3.8 (±1.6)
BLACK	2.8 (±1.5)	4.1 (±2.4)	4.9 (±2.0)	5.0 (±2.0)	2.5 (±1.2)	4.0 (±1.7)	3.6 (±1.6)	7.7 (±3.5)	5.5 (±1.6)	4.6 (±2.5)
GRADE										
6	1.1 (±1.1)	2.7 (±2.6)	3.0 (±2.1)	3.4 (±1.7)	1.0 (±1.0)	3.4 (±2.5)	0.9 (±0.7)	3.5 (±3.9)	3.4 (±1.8)	3.0 (±2.5)
7	2.1 (±1.6)	3.1 (±2.0)	3.3 (±2.0)	3.0 (±1.7)	2.7 (±1.6)	2.9 (±1.5)	4.9 (±2.1)	4.1 (±3.8)	4.5 (±1.3)	2.9 (±1.7)
8	2.3 (±1.6)	3.9 (±2.2)	6.4 (±3.3)	5.6 (±2.5)	5.0 (±2.2)	4.3 (±2.5)	2.9 (±1.3)	8.7 (±3.5)	4.6 (±2.5)	6.9 (±2.6)

	2011	2010	2009	2008	2006	2004	2003	2002	2000	1998
TOTAL	4.8 (±1.4)	5.5 (±1.3)	6.3 (±1.4)	9.3 (±2.2)	6.1 (±1.7)	10.6 (±1.8)	9.0 (±1.1)	N/A	12.1 (±2.2)	16.4 (±3.5)
SEX										
FEMALE	3.5 (±1.3)	4.2 (±1.5)	4.4 (±1.5)	6.6 (±2.2)	4.0 (±1.5)	8.5 (±1.5)	6.9 (±1.1)	N/A	10.2 (±2.8)	12.3 (±4.5)
MALE	6.1 (±1.9)	6.6 (±1.9)	8.1 (±2.3)	11.8 (±3.0)	8.3 (±2.7)	12.7 (±2.8)	10.9 (±1.2)	N/A	13.9 (±2.7)	20.4 (±3.9)
RACE										
WHITE	3.6 (±1.9)	4.5 (±1.4)	5.6 (±2.6)	6.5 (±2.0)	4.7 (±2.2)	9.0 (±1.8)	6.5 (±1.0)	N/A	9.2 (±2.2)	12.3 (±2.3)
BLACK	5.9 (±2.0)	6.3 (±2.1)	6.6 (±1.8)	11.4 (±3.5)	7.4 (±2.2)	12.1 (±2.8)	11.1 (±1.3)	N/A	14.8 (±3.9)	19.9 (±5.4)
GRADE										
6	4.3 (±1.7)	3.0 (±1.3)	3.4 (±1.8)	5.1 (±4.0)	4.4 (±1.7)	7.6 (±1.5)	6.1 (±1.1)	N/A	9.7 (±4.8)	7.9 (±2.1)
7	4.9 (±2.6)	5.5 (±2.3)	5.9 (±2.5)	10.9 (±4.0)	4.9 (±3.1)	13.0 (±3.7)	8.8 (±1.6)	N/A	11.8 (±3.5)	17.1 (±8.3)
8	4.9 (±2.2)	7.9 (±2.1)	9.7 (±2.8)	12.1 (±2.9)	8.8 (±3.1)	11.2 (±4.0)	12.0 (±1.5)	N/A	14.9 (±4.5)	21.2 (±3.9)

We removed the 1999 data due to space restrictions. These data are available in the YTS booklets from previous years.



Mississippi Youth Tobacco Use (1998-2022) Ever Tried a Cigar - Public High School

	2022	2021	2019	2018	2017	2016	2015	2014	2013	2012
TOTAL	17.1 (±2.4)	17.3 (±2.6)	23.8 (±2.8)	27.4 (±2.8)	20.0 (±2.6)	22.8 (±2.4)	22.0 (±3.1)	24.8 (±2.9)	25.0 (±3.8)	29.5 (±3.3)
SEX										
FEMALE	15.1 (±3.3)	16.8 (±3.5)	23.0 (±4.7)	24.2 (±4.0)	18.2 (±3.7)	19.0 (±3.4)	15.6 (±2.8)	18.6 (±2.9)	20.2 (±4.5)	25.2 (±4.1)
MALE	19.0 (±2.7)	16.8 (±2.8)	24.8 (±3.6)	30.8 (±3.7)	21.7 (±4.1)	26.4 (±3.2)	28.2 (±4.6)	30.5 (±4.4)	29.7 (±4.9)	34.0 (±5.3)
RACE										
WHITE	12.6 (±3.0)	15.8 (±4.6)	21.4 (±4.5)	27.2 (±3.4)	22.3 (±3.0)	25.8 (±3.1)	26.2 (±4.6)	27.5 (±3.9)	28.3 (±4.9)	30.9 (±5.6)
BLACK	21.5 (±2.5)	19.2 (±2.1)	26.4 (±3.7)	27.5 (±3.5)	17.1 (±3.5)	20.6 (±3.3)	17.3 (±3.2)	22.4 (±4.2)	22.2 (±5.0)	28.1 (±4.0)
GRADE										
9	12.9 (±4.2)	16.8 (±4.8)	19.3 (±4.7)	23.9 (±4.7)	14.7 (±2.3)	17.8 (±4.6)	15.1 (±4.9)	17.2 (±4.5)	15.8 (±4.6)	19.4 (±5.9)
10	16.1 (±2.7)	13.1 (±3.9)	19.4 (±5.3)	26.5 (±4.4)	18.2 (±3.3)	22.8 (±4.7)	26.7 (±4.8)	24.7 (±6.4)	24.2 (±5.1)	34.5 (±5.3)
11	19.5 (±3.5)	19.4 (±4.6)	23.7 (±3.7)	29.8 (±5.9)	18.7 (±6.4)	26.0 (±4.6)	22.0 (±6.8)	27.8 (±5.3)	28.4 (±7.5)	29.9 (±5.1)
12	21.4 (±5.9)	20.2 (±5.9)	34.4 (±6.5)	30.2 (±4.2)	28.8 (±4.3)	26.0 (±6.0)	25.5 (±6.5)	31.8 (±5.8)	34.4 (±7.5)	36.5 (±7.3)

	2011	2010	2009	2008	2006	2004	2003	2002	2000	1998
TOTAL	28.7 (±3.7)	29.1 (±3.6)	29.8 (±2.8)	32.5 (±3.6)	37.7 (±3.0)	39.2 (±2.7)	39.4 (±1.3)	N/A	48.8 (±4.2)	53.0 (±3.0)
SEX										
FEMALE	20.7 (±3.7)	24.9 (±4.4)	23.2 (±3.2)	25.4 (±4.9)	30.8 (±3.7)	31.5 (±3.3)	31.9 (±1.8)	N/A	39.4 (±5.9)	43.2 (±3.6)
MALE	36.9 (±4.5)	33.3 (±5.0)	36.6 (±4.3)	40.2 (±5.4)	44.9 (±4.4)	46.7 (±4.1)	47.4 (±1.8)	N/A	58.9 (±4.0)	63.5 (±3.5)
RACE										
WHITE	32.8 (±4.6)	34.0 (±5.0)	33.1 (±4.2)	35.7 (±4.0)	38.9 (±3.6)	41.4 (±3.8)	42.4 (±2.2)	N/A	52.5 (±6.5)	54.4 (±4.7)
BLACK	24.8 (±5.1)	24.6 (±4.0)	26.2 (±4.3)	28.5 (±5.2)	36.8 (±5.3)	36.9 (±3.8)	35.6 (±1.8)	N/A	44.0 (±5.4)	51.1 (±4.9)
GRADE										
9	24.2 (±5.2)	21.5 (±3.5)	24.8 (±4.4)	29.3 (±6.7)	39.0 (±3.3)	35.3 (±5.2)	36.7 (±2.3)	N/A	44.6 (±6.1)	50.0 (±6.3)
10	25.7 (±4.5)	29.4 (±5.3)	31.0 (±5.2)	34.3 (±4.8)	36.6 (±9.8)	39.2 (±4.5)	36.7 (±1.9)	N/A	46.7 (±5.7)	49.9 (±6.9)
11	30.6 (±7.8)	32.6 (±6.5)	28.4 (±5.1)	26.5 (±7.9)	30.7 (±9.6)	39.3 (±4.6)	41.9 (±3.3)	N/A	53.5 (±6.4)	57.5 (±4.8)
12	36.5 (±7.6)	35.3 (±5.6)	37.3 (±5.5)	40.7 (±4.8)	45.8 (±4.8)	45.7 (±4.7)	43.7 (±2.4)	N/A	51.1 (±7.2)	56.9 (±6.6)

We removed the 1999 data due to space restrictions. These data are available in the YTS booklets from previous years.

APPENDIX { CIGARS }



Mississippi Youth Tobacco Use {1998-2022} Ever Tried a Cigar - Public Middle School

	2022	2021	2019	2018	2017	2016	2015	2014	2013	2012
TOTAL	6.8 (±2.1)	8.7 (±2.3)	10.7 (±3.0)	10.9 (±2.5)	6.8 (±1.8)	9.5 (±2.0)	8.6 (±1.8)	9.8 (±3.2)	9.3 (±2.1)	10.6 (±2.6)
SEX										
FEMALE	6.0 (±3.1)	8.2 (±2.5)	8.9 (±3.7)	10.8 (±2.6)	6.4 (±2.1)	6.2 (±1.9)	7.0 (±2.5)	4.9 (±1.6)	6.5 (±2.1)	8.1 (±2.4)
MALE	7.2 (±2.2)	9.4 (±3.1)	12.4 (±3.0)	11.2 (±3.5)	7.1 (±1.9)	12.7 (±3.6)	10.1 (±1.9)	14.5 (±5.2)	12.1 (±2.5)	13.0 (±3.9)
RACE										
WHITE	5.8 (±1.8)	7.5 (±2.6)	8.1 (±3.6)	7.5 (±2.7)	6.2 (±2.3)	8.7 (±2.8)	7.3 (±1.8)	7.3 (±2.7)	7.5 (±2.4)	12.4 (±2.6)
BLACK	7.6 (±3.4)	9.8 (±3.0)	13.5 (±4.4)	13.9 (±3.9)	6.9 (±2.6)	9.9 (±2.3)	10.0 (±3.0)	12.2 (±4.6)	10.9 (±2.8)	9.4 (±4.0)
GRADE										
6	4.3 (±2.8)	7.3 (±3.3)	7.3 (±4.4)	7.5 (±2.6)	3.0 (±1.4)	8.6 (±3.0)	5.0 (±2.3)	6.2 (±4.3)	6.0 (±2.4)	6.0 (±3.7)
7	6.8 (±4.3)	8.8 (±3.2)	7.4 (±2.3)	9.0 (±5.1)	5.5 (±2.2)	6.6 (±2.4)	9.8 (±3.2)	10.0 (±7.4)	8.9 (±2.5)	10.9 (±4.0)
8	8.7 (±2.5)	10.4 (±2.9)	18.3 (±4.7)	16.4 (±3.6)	11.7 (±3.4)	13.1 (±4.2)	10.9 (±2.9)	13.3 (±4.8)	13.3 (±4.0)	15.5 (±3.6)

	2011	2010	2009	2008	2006	2004	2003	2002	2000	1998
TOTAL	11.1 (±2.8)	11.7 (±2.1)	14.3 (±2.5)	19.8 (±2.5)	18.6 (±2.7)	22.2 (±2.5)	20.4 (±1.7)	N/A	31.8 (±2.5)	32.5 (±4.1)
SEX										
FEMALE	9.3 (±3.1)	9.1 (±2.6)	10.4 (±2.0)	14.9 (±2.6)	14.3 (±2.8)	17.9 (±2.1)	15.6 (±1.8)	N/A	23.6 (±3.1)	24.2 (±5.6)
MALE	13.0 (±3.1)	14.0 (±3.2)	18.2 (±3.8)	24.5 (±3.1)	22.9 (±4.0)	26.6 (±3.7)	25.0 (±1.8)	N/A	39.5 (±4.0)	40.7 (±3.9)
RACE										
WHITE	9.4 (±4.3)	10.2 (±2.7)	14.1 (±3.9)	14.9 (±2.7)	17.0 (±3.5)	19.6 (±3.0)	17.5 (±1.8)	N/A	29.4 (±2.6)	29.2 (±3.6)
BLACK	13.0 (±3.2)	12.9 (±3.1)	14.1 (±3.0)	24.1 (±3.2)	20.4 (±3.5)	24.8 (±3.2)	22.7 (±2.0)	N/A	35.0 (±5.1)	35.6 (±6.4)
GRADE										
6	8.3 (±4.1)	6.4 (±2.4)	7.4 (±2.7)	11.9 (±3.3)	14.7 (±3.4)	14.8 (±3.0)	14.1 (±1.7)	N/A	22.8 (±5.1)	19.2 (±3.5)
7	11.2 (±3.5)	10.9 (±3.5)	13.7 (±5.0)	20.4 (±3.8)	16.0 (±4.6)	23.9 (±4.3)	20.6 (±2.0)	N/A	33.2 (±4.4)	35.5 (±8.7)
8	13.6 (±4.2)	17.5 (±3.6)	21.9 (±4.2)	27.6 (±4.1)	25.3 (±3.5)	27.6 (±4.4)	26.5 (±2.4)	N/A	39.2 (±5.5)	40.2 (±6.4)

We removed the 1999 data due to space restrictions. These data are available in the YTS booklets from previous years.



Mississippi Youth Tobacco Use {1998-2022} Frequent Cigar Smoking - Public High School

	2022	2021	2019	2018	2017	2016	2015	2014	2013	2012
TOTAL	1.2 (±0.7)	1.3 (±0.5)	2.2 (±0.7)	1.6 (±0.7)	1.2 (±0.5)	0.8 (±0.3)	0.5 (±0.4)	1.5 (±0.8)	1.8 (±0.8)	2.1 (±0.9)
SEX										
FEMALE	0.6 (±0.6)	0.7 (±0.5)	1.0 (±0.7)	1.2 (±0.9)	1.5 (±0.9)	0.3 (±0.3)	0.1 (±0.2)	0.8 (±0.8)	1.0 (±0.5)	0.9 (±0.8)
MALE	1.7 (±0.9)	1.9 (±1.0)	3.5 (±1.3)	2.0 (±1.0)	0.9 (±0.5)	1.3 (±0.7)	0.9 (±0.8)	2.2 (±1.3)	2.6 (±1.5)	3.2 (±1.4)
RACE										
WHITE	0.2 (±0.3)	1.6 (±0.8)	1.2 (±0.9)	1.3 (±0.8)	1.3 (±0.6)	0.5 (±0.5)	0.1 (±0.2)	0.7 (±0.7)	1.5 (±0.9)	1.3 (±0.9)
BLACK	2.2 (±1.2)	1.1 (±0.8)	2.6 (±0.9)	1.8 (±0.8)	0.8 (±0.6)	0.8 (±0.6)	0.9 (±0.9)	2.2 (±1.3)	2.1 (±1.0)	2.8 (±1.3)
GRADE										
9	0.3 (±0.4)	0.8 (±0.8)	2.2 (±1.7)	1.0 (±0.7)	0.7 (±0.7)	0.4 (±0.4)	0.2 (±0.3)	1.3 (±1.5)	0.0 (±0.0)	0.9 (±0.8)
10	2.0 (±1.7)	1.5 (±1.2)	1.1 (±0.8)	1.6 (±1.5)	0.9 (±0.6)	0.2 (±0.3)	0.2 (±0.4)	1.7 (±1.4)	2.0 (±1.7)	3.2 (±2.0)
11	1.9 (±1.3)	1.6 (±1.1)	2.8 (±1.4)	1.0 (±1.2)	1.0 (±1.2)	0.8 (±1.1)	0.9 (±1.2)	1.6 (±1.4)	2.5 (±1.6)	2.0 (±1.9)
12	0.9 (±1.9)	1.5 (±1.4)	2.9 (±2.3)	2.6 (±1.5)	2.4 (±1.3)	2.0 (±1.3)	0.7 (±1.0)	1.1 (±1.2)	3.1 (±1.4)	2.3 (±2.4)

	2011	2010	2009	2008	2006	2004	2003	2002	2000	1998
TOTAL	2.6 (±1.0)	2.2 (±0.8)	2.4 (±0.7)	2.7 (±1.5)	1.6 (±0.9)	2.7 (±0.6)	2.0 (±0.4)	N/A	2.1 (±1.0)	1.4 (±0.9)
SEX										
FEMALE	1.8 (±1.0)	1.3 (±0.9)	0.9 (±0.5)	2.4 (±1.6)	0.5 (±0.4)	1.1 (±0.5)	0.9 (±0.3)	N/A	1.1 (±0.7)	0.2 (±1.0)
MALE	3.3 (±1.8)	3.1 (±1.5)	4.0 (±1.3)	3.0 (±1.8)	2.7 (±1.6)	4.3 (±1.1)	3.1 (±0.8)	N/A	2.9 (±1.5)	2.6 (±1.5)
RACE										
WHITE	2.2 (±0.9)	2.0 (±1.2)	2.3 (±1.1)	1.5 (±1.0)	1.7 (±1.1)	2.6 (±0.8)	1.6 (±0.5)	N/A	1.1 (±0.8)	1.5 (±1.1)
BLACK	2.9 (±1.6)	2.2 (±0.9)	2.3 (±1.8)	3.7 (±2.6)	1.3 (±1.2)	2.8 (±1.3)	1.9 (±0.6)	N/A	2.3 (±1.8)	0.9 (±1.2)
GRADE										
9	1.7 (±1.5)	1.5 (±1.2)	1.7 (±1.2)	1.5 (±1.3)	0.6 (±0.8)	1.8 (±0.7)	1.9 (±0.6)	N/A	1.3 (±1.1)	1.1 (±1.3)
10	2.1 (±1.7)	0.6 (±0.7)	2.4 (±1.5)	3.1 (±2.2)	2.0 (±1.7)	2.8 (±1.2)	1.6 (±0.6)	N/A	2.3 (±1.1)	1.8 (±1.2)
11	1.7 (±1.2)	2.9 (±2.1)	4.3 (±1.9)	1.7 (±2.6)	1.8 (±1.6)	4.0 (±2.3)	2.5 (±1.1)	N/A	2.4 (±2.0)	1.0 (±1.6)
12	5.0 (±2.6)	4.1 (±1.9)	1.3 (±1.0)	4.6 (±3.1)	2.2 (±1.6)	2.9 (±1.1)	2.2 (±0.7)	N/A	2.2 (±1.8)	1.4 (±1.5)

We removed the 1999 data due to space restrictions. These data are available in the YTS booklets from previous years.

APPENDIX {CIGARS}



Mississippi Youth Tobacco Use {1998-2022} Frequent Cigar Smoking - Public Middle School

APPENDIX {CIGARS}

	2022	2021	2019	2018	2017	2016	2015	2014	2013	2012
TOTAL	0.4 (±0.2)	0.6 (±0.6)	0.4 (±0.4)	0.1 (±0.1)	0.2 (±0.2)	0.5 (±0.3)	0.3 (±0.3)	0.3 (±0.2)	0.6 (±0.4)	0.1 (±0.2)
SEX										
FEMALE	0.3 (±0.4)	0.6 (±0.6)	0.1 (±0.1)	0.0 (±0.0)	0.0 (±0.0)	0.1 (±0.2)	0.1 (±0.1)	0.3 (±0.4)	0.1 (±0.2)	0.1 (±0.2)
MALE	0.5 (±0.1)	0.7 (±0.7)	0.8 (±0.8)	0.2 (±0.3)	0.3 (±0.3)	0.8 (±0.5)	0.6 (±0.5)	0.3 (±0.1)	1.0 (±0.7)	0.1 (±0.3)
RACE										
WHITE	0.0 (±0.0)	0.4 (±0.5)	0.5 (±0.5)	0.1 (±0.2)	0.3 (±0.3)	0.4 (±0.3)	0.5 (±0.5)	0.2 (±0.1)	0.5 (±0.5)	0.3 (±0.4)
BLACK	0.5 (±0.5)	0.8 (±0.9)	0.4 (±0.6)	0.1 (±0.2)	0.0 (±0.0)	0.4 (±0.5)	0.1 (±0.2)	0.3 (±0.4)	0.5 (±0.4)	0.0 (±0.0)
GRADE										
6	0.1 (±0.2)	0.6 (±0.9)	0.2 (±0.3)	0.3 (±0.4)	0.0 (±0.0)	0.4 (±0.5)	0.1 (±0.1)	0.2 (±0.3)	0.7 (±0.7)	0.0 (±0.0)
7	0.5 (±0.7)	0.3 (±0.4)	0.2 (±0.2)	0.0 (±0.0)	0.2 (±0.3)	0.3 (±0.4)	0.3 (±0.4)	0.2 (±0.3)	0.0 (±0.1)	0.1 (±0.3)
8	0.5 (±0.7)	1.0 (±0.9)	1.0 (±1.1)	0.0 (±0.0)	0.3 (±0.4)	0.7 (±0.8)	0.6 (±0.7)	0.5 (±0.6)	1.1 (±0.7)	0.2 (±0.5)

	2011	2010	2009	2008	2006	2004	2003	2002	2000	1998
TOTAL	0.6 (±0.3)	0.6 (±0.4)	1.2 (±0.6)	1.7 (±0.8)	0.9 (±0.6)	1.0 (±0.4)	0.9 (±0.3)	N/A	0.9 (±0.7)	1.7 (±1.1)
SEX										
FEMALE	0.1 (±0.3)	0.3 (±0.4)	0.6 (±0.6)	0.9 (±0.5)	0.3 (±0.3)	0.4 (±0.3)	0.5 (±0.3)	N/A	0.1 (±0.6)	0.9 (±0.9)
MALE	1.1 (±0.7)	0.8 (±0.7)	1.8 (±1.0)	2.5 (±1.5)	1.5 (±1.1)	1.6 (±0.8)	1.3 (±0.3)	N/A	1.7 (±1.3)	2.4 (±1.7)
RACE										
WHITE	0.2 (±0.4)	0.5 (±0.7)	1.0 (±0.6)	1.3 (±0.9)	0.8 (±0.8)	0.9 (±0.6)	0.8 (±0.3)	N/A	0.8 (±1.4)	1.3 (±1.9)
BLACK	1.0 (±0.6)	0.6 (±0.6)	1.3 (±1.0)	1.8 (±1.3)	0.9 (±0.7)	1.1 (±0.5)	0.8 (±0.4)	N/A	1.2 (±1.1)	1.7 (±1.2)
GRADE										
6	1.4 (±1.0)	0.7 (±0.7)	0.9 (±0.7)	1.1 (±0.7)	0.6 (±0.6)	0.4 (±0.5)	0.6 (±0.4)	N/A	1.2 (±2.4)	0.2 (±0.9)
7	0.3 (±0.4)	0.2 (±0.3)	2.0 (±1.2)	1.9 (±1.9)	0.6 (±0.8)	1.3 (±0.7)	0.7 (±0.3)	N/A	0.9 (±1.1)	1.0 (±1.3)
8	0.2 (±0.4)	0.8 (±1.0)	0.7 (±0.9)	2.0 (±1.3)	1.2 (±1.0)	1.2 (±0.6)	1.4 (±0.5)	N/A	0.7 (±1.0)	1.9 (±1.6)

We removed the 1999 data due to space restrictions. These data are available in the YTS booklets from previous years.



## methods

### BACKGROUND

The Centers for Disease Control and Prevention's (CDC) Office on Smoking and Health (OSH) provides technical assistance to the states to administer this survey. Mississippi has administered the Youth Tobacco Survey (YTS) in 1998, 1999, 2000, 2002, 2003, 2004, 2006, 2008, 2009, 2010, 2011, 2012, 2013, 2014, 2015, 2016, 2017, 2018, 2019, 2021, and 2022.

**THE PURPOSE OF THE YTS** is to provide states with the data needed to design, implement, and evaluate comprehensive tobacco control programs that work to prevent young people from beginning tobacco use and help those who have already started using tobacco to quit.

**THE YTS COLLECTS DATA** from students in grades 6 through 12.

**YTS DATA** provide information on many key intermediate and long-term tobacco-related indicators, allowing states to measure progress toward state goals and objectives.

### SAMPLE DESIGN

A multi-stage sample design was applied with public middle and high schools selected proportional to enrollment size. Classrooms were chosen randomly within selected schools, and all students in selected classes were eligible for participation. Data were collected by means of an

anonymous and confidential self-administered questionnaire. The questionnaires were group-administered in classrooms during a normal class period by teachers following standardized procedures.

### EDITING, WEIGHTING, AND INITIAL ANALYSIS OF DATA

The Research Triangle Institute and the CDC's Office of Smoking and Health provided technical assistance with the processing and weighting of the data. A weighting factor was applied to each student record to adjust for non-response at the school, class, and student levels. SUDAAN statistical software was used to calculate standard errors for estimates and 95 percent confidence intervals. Weight adjustments were made for the following:

**WEIGHT** =  $W1 * W2 * f1 * f2 * f3 * f4$

**W1** = inverse of the probability of selecting the school

**W2** = inverse of the probability of selecting the classroom within the school

**F1** = a school-level non-response adjustment factor calculated by school size (small, medium, large)

**F2** = a class adjustment factor calculated by school

**F3** = a student-level non-response adjustment factor calculated by class

**F4** = a post stratification adjustment factor calculated by gender and grade

## contact us!

**Nell Valentine, MS**

[nell.valentine@ssrc.msstate.edu](mailto:nell.valentine@ssrc.msstate.edu)

**Robert McMillen, PhD**

[robert.mcmillen@ssrc.msstate.edu](mailto:robert.mcmillen@ssrc.msstate.edu)

**Social Science Research Center**

[ssrc.msstate.edu](http://ssrc.msstate.edu)

**Mississippi State University**

[msstate.edu](http://msstate.edu)

**One Research Blvd., Suite 103  
Starkville, MS 39759**

**P: 662.325.7127**

**F: 662.325.7966**

**For more information visit**


[mstobaccodata.org](http://mstobaccodata.org)

▶ FUNDED BY A GRANT FROM THE MISSISSIPPI STATE DEPARTMENT OF HEALTH. THE INFORMATION, VIEWS, AND OPINIONS CONTAINED HEREIN ARE THOSE OF THE AUTHORS AND DO NOT NECESSARILY REFLECT THE VIEWS AND OPINIONS OF THIS ORGANIZATION.

▶ MISSISSIPPI STATE UNIVERSITY DOES NOT DISCRIMINATE ON THE BASIS OF RACE, COLOR, RELIGION, NATIONAL ORIGIN, SEX, AGE, DISABILITY, OR VETERAN STATUS. THIS REPORT IS FUNDED BY A GRANT OF THE MISSISSIPPI STATE DEPARTMENT OF HEALTH.





  
**MISSISSIPPI**  
TOBACCO DATA



**MISSISSIPPI STATE UNIVERSITY™**  
SOCIAL SCIENCE RESEARCH CENTER



MISSISSIPPI STATE DEPARTMENT OF HEALTH

