

2018

the mississippi *youth tobacco*

S U R V E Y

1998-2017

mississippi tobacco data



background

In 1998, the state of Mississippi approved a tobacco prevention pilot program that resulted in the formation of The Partnership for a Healthy Mississippi. The Partnership implemented most of its tobacco control programs by 1999, and at the conclusion of the pilot program, approximately \$20 million annually was court-ordered to go directly to

The Partnership from the state's tobacco settlement. In addition to these funds, the Mississippi State Department of Health (MSDH) received funds from the Centers for Disease Control and Prevention through a cooperative agreement to implement and enhance tobacco prevention and cessation efforts.

In 2006, Governor Haley Barbour, the state Division of Medicaid, and the Health Care Trust Fund filed motions to vacate the December 2000 order and direct the \$20 million away from tobacco prevention and into the trust fund. This motion was successful. As of June 1, 2006, counter-marketing campaigns were no longer airing, and the college program for the 18 to 24-year-old market ended. As of November 30, 2006, The Partnership ceased funding of cessation programs, including a statewide quitline and

regional tobacco cessation treatment clinics, a law enforcement program, and numerous statewide and after-school programs.

In 2007, the Mississippi Legislature called for the development, implementation, and funding of a comprehensive and statewide tobacco education, prevention, and cessation program that is consistent with the Best Practices for Tobacco Control Programs of the federal Centers for Disease Control and Prevention. The FY2008 allocated \$8 million for the Office of Tobacco Control, MSDH, to create a state tobacco prevention and cessation program. Funding at this level was sustained for FY2009, FY2010, FY2011, FY2012, FY2013, FY2014, FY2015, and FY2016. Funding decreased for FY2017.

THIS REPORT WAS PRODUCED BY SCIENTISTS AT THE SOCIAL SCIENCE RESEARCH CENTER OF MISSISSIPPI STATE UNIVERSITY. THIS PROJECT IS FUNDED BY A GRANT OF THE MISSISSIPPI STATE DEPARTMENT OF HEALTH. ANY OPINIONS IMPLIED OR EXPRESSED HERE ARE THOSE OF THE AUTHORS AND DO NOT NECESSARILY REFLECT THOSE OF THE MISSISSIPPI STATE DEPARTMENT OF HEALTH OR OF MISSISSIPPI STATE UNIVERSITY.

table of contents

- ▶ background...page(1)
- ▶ table of contents...page(2)
- ▶ key outcomes {cigarettes}...page(3)
- ▶ key outcomes {smokeless tobacco & cigars}...page(4)
- ▶ {cigarette smoking data}...pages(5-7)
 - ▶ current cigarette smoking...page(5)
 - ▶ ever tried a cigarette...page(6)
 - ▶ frequent cigarette smoking...page(7)
- ▶ {smokeless tobacco use data}...pages(8-10)
 - ▶ current smokeless tobacco use...page(8)
 - ▶ ever tried smokeless tobacco...page(9)
 - ▶ frequent smokeless tobacco use...page(10)
- ▶ {cigar smoking data}...pages(11-13)
 - ▶ current cigar smoking...page(11)
 - ▶ ever tried a cigar...page(12)
 - ▶ frequent cigar smoking...page(13)
- ▶ {electronic cigarette use data}...pages(14-16)
 - ▶ current electronic cigarette use...page (14)
 - ▶ ever tried an electronic cigarette...page (15)
 - ▶ frequent electronic cigarette use...page (16)
- ▶ appendix {comparison charts}...pages(17-20)
 - ▶ change in cigarette smoking...page(17)
 - ▶ change in smokeless tobacco use...page(18)
 - ▶ change in cigar smoking...page(19)
 - ▶ change in electronic cigarette use...page(20)
- ▶ appendix {cigarettes}...pages(21-26)
- ▶ appendix {smokeless tobacco}...pages(27-32)
- ▶ appendix {cigars}...pages(33-38)
- ▶ appendix {electronic cigarettes}...pages(39-41)
- ▶ methods + contact us...page(42)



key outcomes

{cigarettes}

- * Tobacco use among Mississippi youth has decreased substantially since statewide tobacco control programs were implemented in 1999.
 - * Current smoking among public middle school students has decreased by 93% since 1998, leading to 20,468 fewer young smokers.
 - * Current smoking among public high school students has decreased by 76% since 1998, leading to 30,649 fewer young smokers.
 - * The prevalence of having ever tried smoking has decreased by 77% since 1998, leading to 44,580 fewer middle school students who have tried smoking.
-
- * The prevalence of having ever tried smoking has decreased by 56% since 1998, leading to 56,654 fewer high school students who have tried smoking.
 - * Frequent smoking has decreased by 94% since 1998, leading to 5,251 fewer middle school students who are frequent smokers.
 - * Frequent smoking has decreased by 88% since 1998, leading to 16,718 fewer high school students who are frequent smokers.

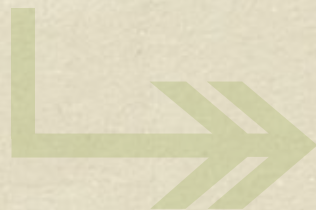


{ smokeless tobacco }

- * Current smokeless tobacco (SLT) use among public middle school students has decreased by 69% since 1998, leading to 7,073 fewer young SLT users.
- * The prevalence of having ever tried SLT has decreased by 54% since 1998, leading to 10,395 fewer middle school students who have tried SLT.
- * The prevalence of having ever tried SLT has decreased by 43% since 1998, leading to 14,860 fewer high school students who have tried SLT.

{ cigars }

- * Current cigar smoking among public middle school students has decreased by 82% since 1998, leading to 14,467 fewer young cigar smokers.
- * Current cigar smoking among public high school students has decreased by 62% since 1998, leading to 18,442 fewer young cigar smokers.



key outcomes

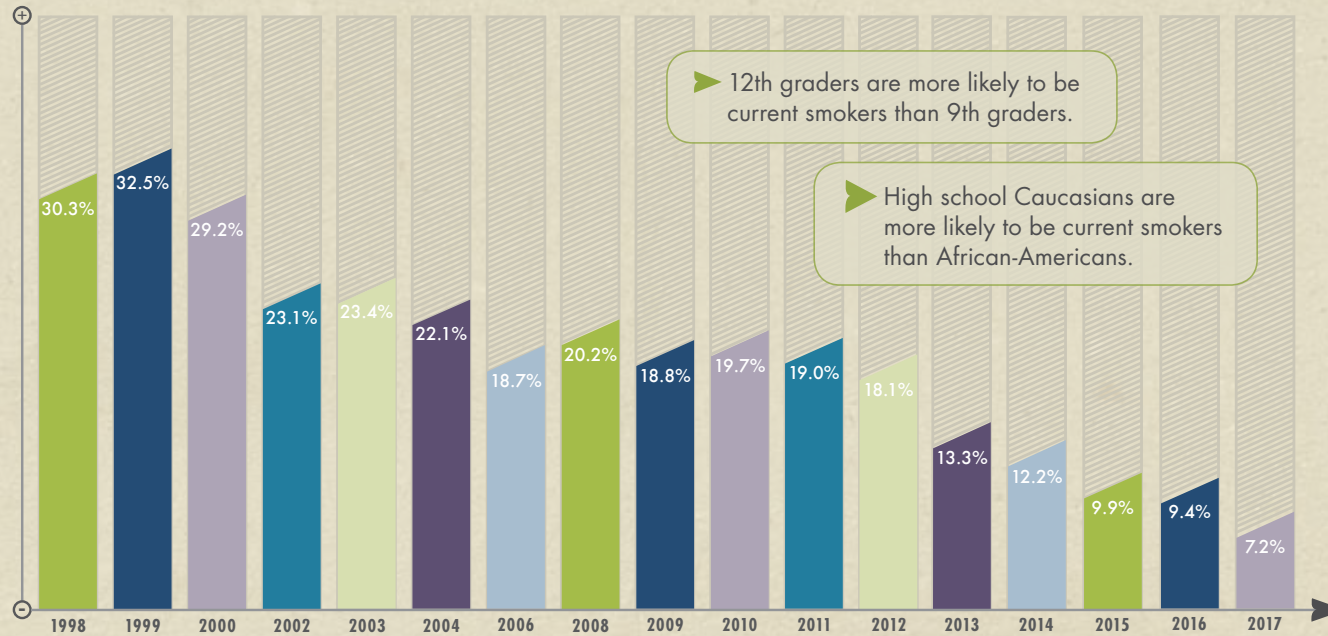
- * The prevalence of having ever tried cigar smoking has decreased by 79% since 1998, leading to 27,541 fewer middle school students who have tried cigar smoking.
- * The prevalence of having ever tried cigar smoking has decreased by 62% since 1998, leading to 43,784 fewer high school students who have tried cigar smoking.
- * Frequent cigar smoking has decreased by 88% since 1998, leading to 1,607 fewer middle school students who are frequent cigar smokers.



current cigarette smoking

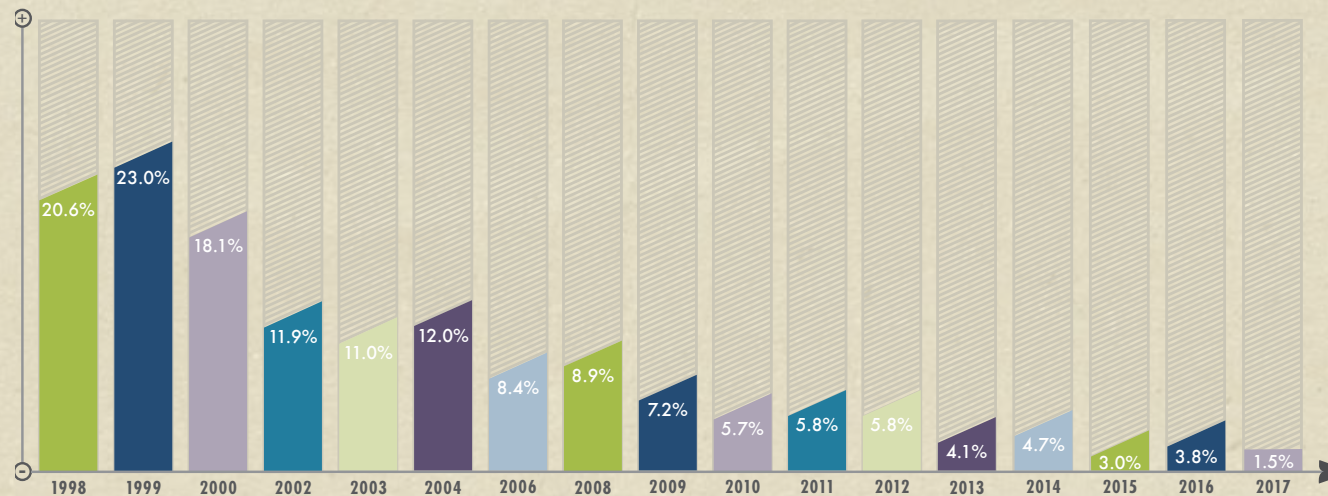
MISSISSIPPI PUBLIC SCHOOLS

HIGH SCHOOLS



- * In 2017, **9,553 Mississippi public high school students** had smoked cigarettes on at least one of the past 30 days.
- * The prevalence of current smoking has **decreased by 76%** since 1998, leading to 30,649 fewer young smokers.
- * In the past year, the prevalence of current smoking **has not changed significantly.**

MIDDLE SCHOOLS



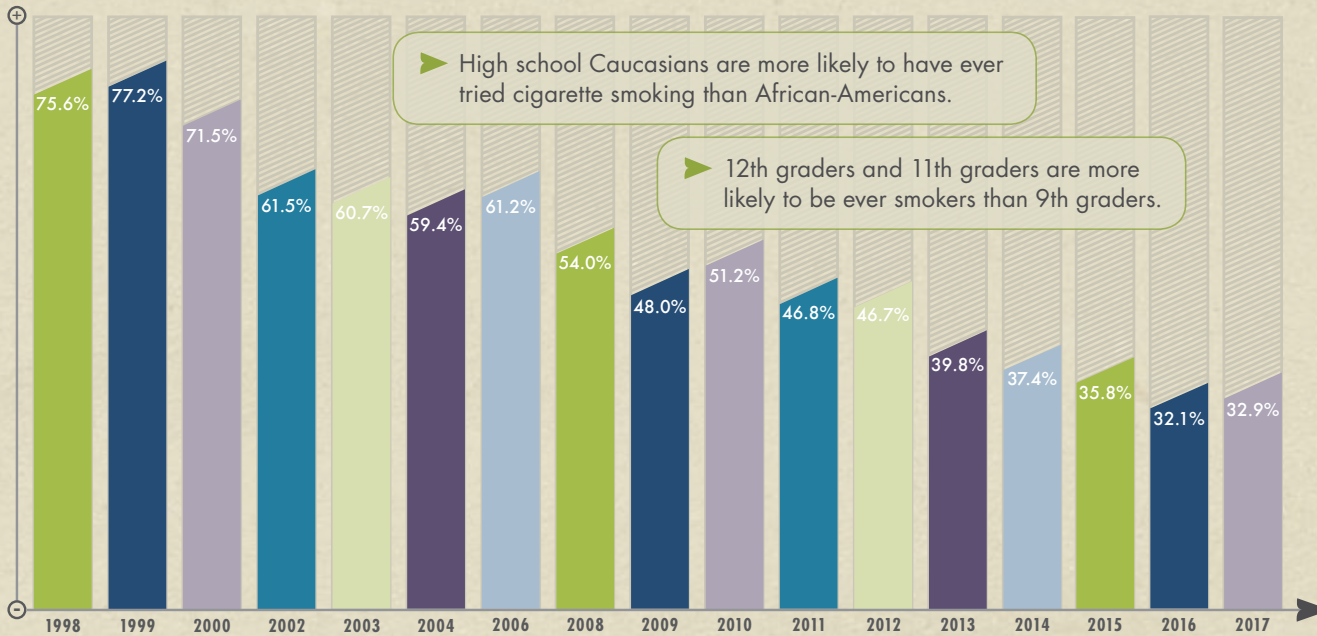
- * In 2017, **1,607 Mississippi public middle school students** had smoked cigarettes on at least one of the past 30 days.
- * The prevalence of current smoking has **decreased by 93%** since 1998, leading to 20,468 fewer young smokers.
- * In the past year, the prevalence of current smoking **has changed significantly.**

➤ Significant Demographic Differences

ever tried a cigarette

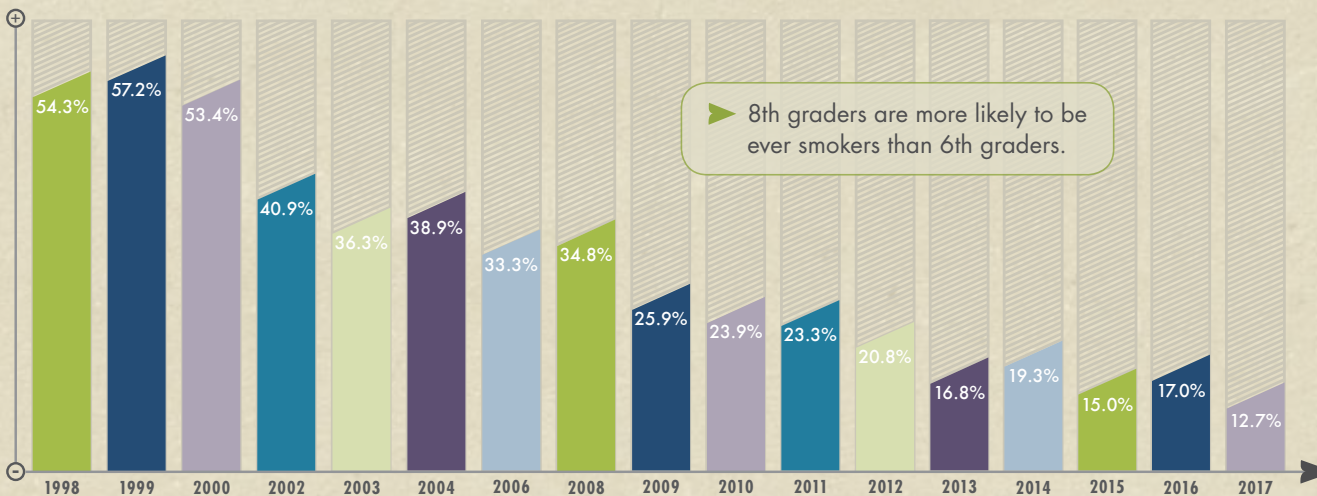
MISSISSIPPI PUBLIC SCHOOLS

HIGH SCHOOLS



- * In 2017, *43,651 Mississippi public high school students* had tried at least one cigarette.
- * The prevalence of having ever tried a cigarette has *decreased by 56%* since 1998, leading to 56,654 fewer high school students who have tried smoking.
- * In the past year, the prevalence of having ever tried smoking *has not changed significantly*.

MIDDLE SCHOOLS

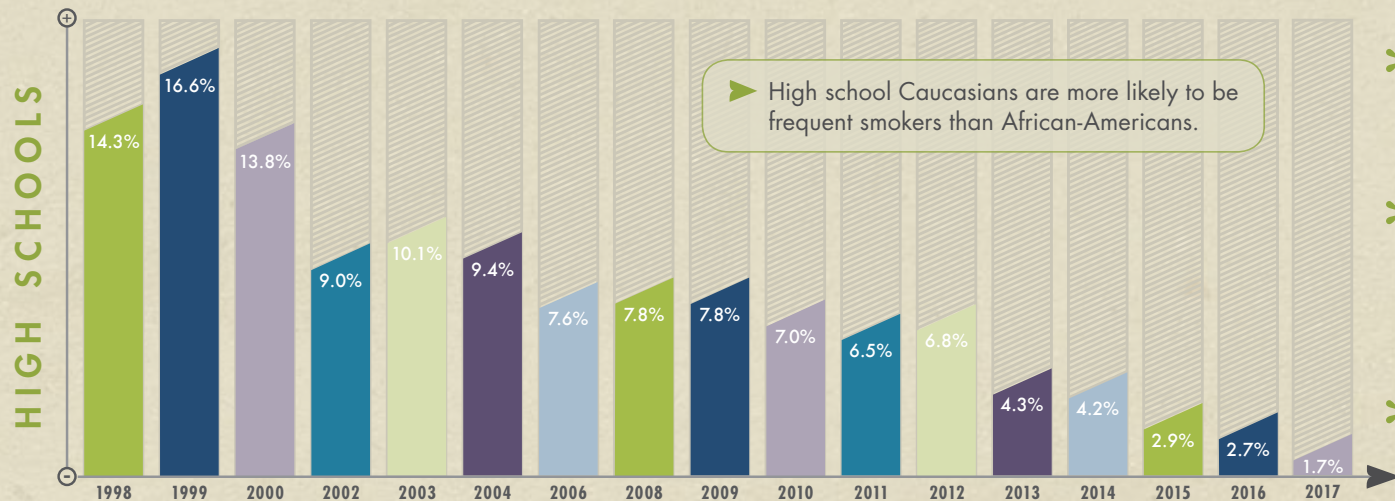


- * In 2017, *13,610 Mississippi public middle school students* had tried at least one cigarette.
- * The prevalence of having ever tried a cigarette has *decreased by 77%* since 1998, leading to 44,580 fewer middle school students who have tried smoking.
- * In the past year, the prevalence of having ever tried smoking *has not changed significantly*.

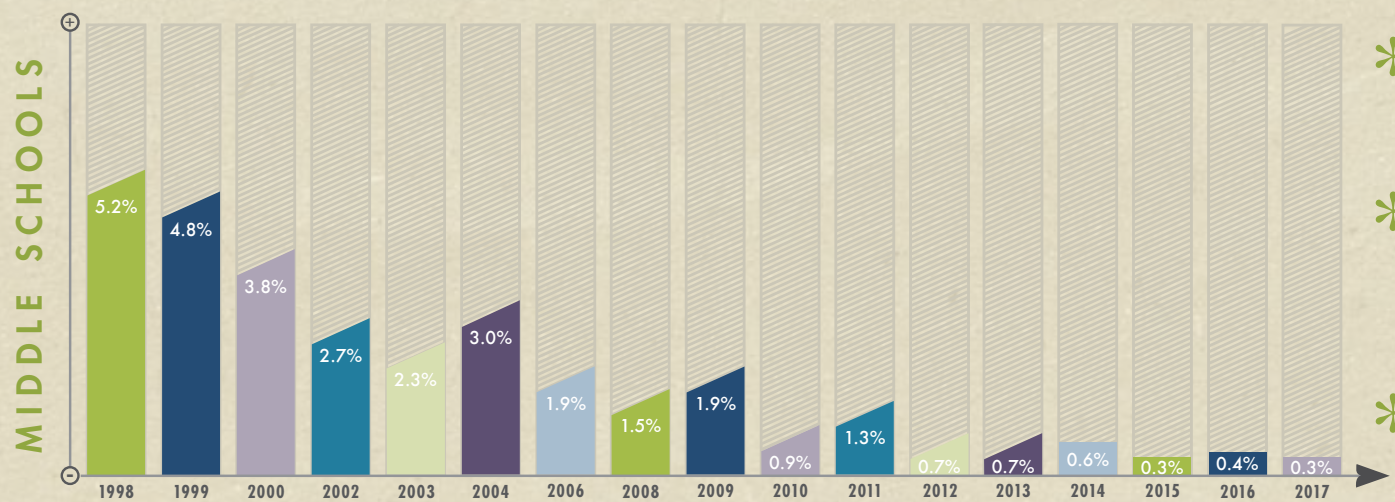
Significant Demographic Differences

frequent cigarette smoking

MISSISSIPPI PUBLIC SCHOOLS



- * In 2017, **2,256 Mississippi public high school students** had smoked cigarettes on at least 20 of the past 30 days.
- * The prevalence of frequent smoking has **decreased by 88%** since 1998, leading to 16,718 fewer high school students who are frequent smokers.
- * In the past year, the prevalence of frequent smoking **has not changed significantly**.



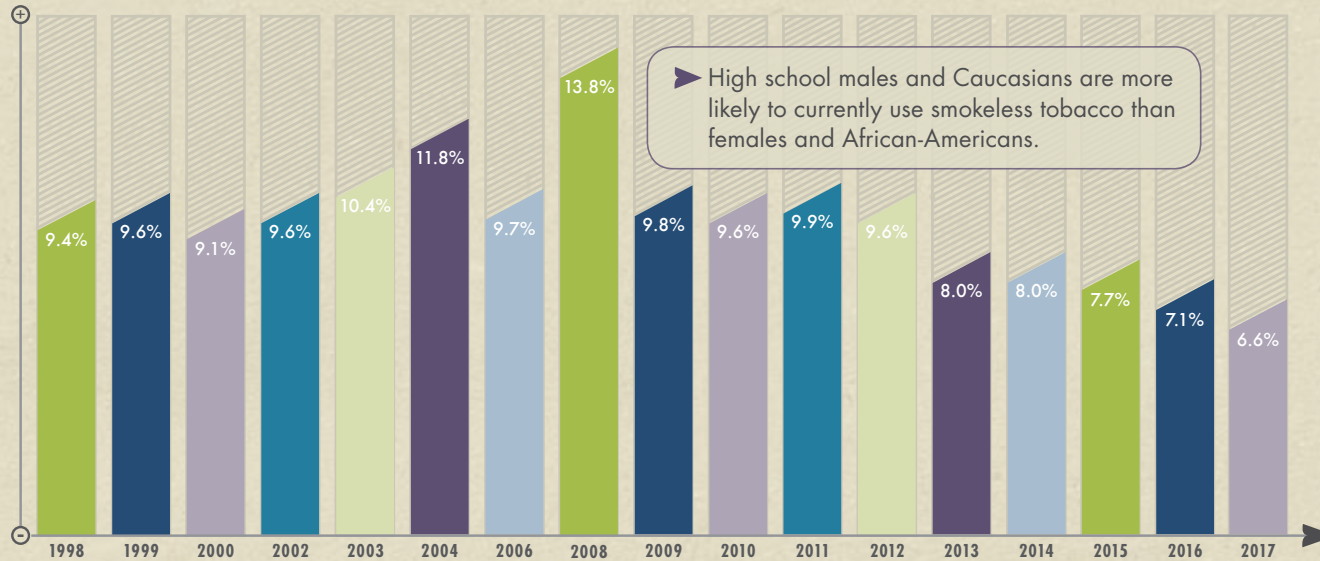
- * In 2017, **321 Mississippi public middle school students** had smoked cigarettes on at least 20 of the past 30 days.
- * The prevalence of frequent smoking has **decreased by 94%** since 1998, leading to 5,251 fewer middle school students who are frequent smokers.
- * In the past year, the prevalence of frequent smoking **has not changed significantly**.

▶ Significant Demographic Differences

current smokeless tobacco use

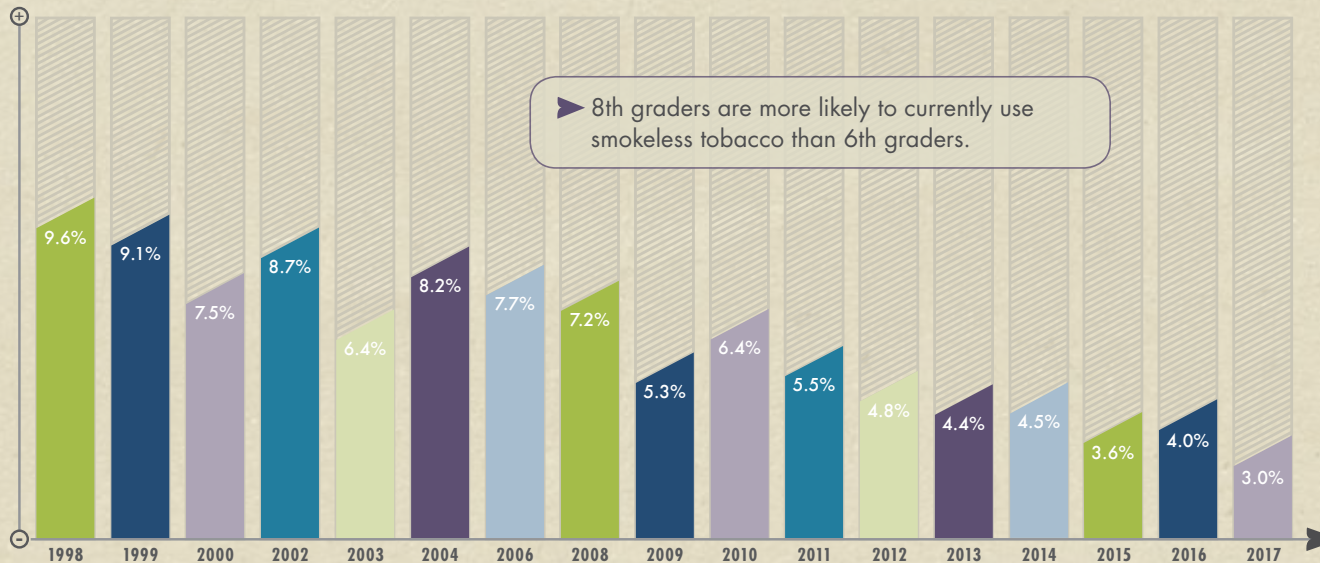
MISSISSIPPI PUBLIC SCHOOLS

HIGH SCHOOLS



- * In 2017, **8,757 Mississippi public high school students** had used SLT on at least one of the past 30 days.
- * Since 1998, the prevalence of current SLT use *has not changed significantly*.
- * In the past year, the prevalence of current SLT use *has not changed significantly*.

MIDDLE SCHOOLS

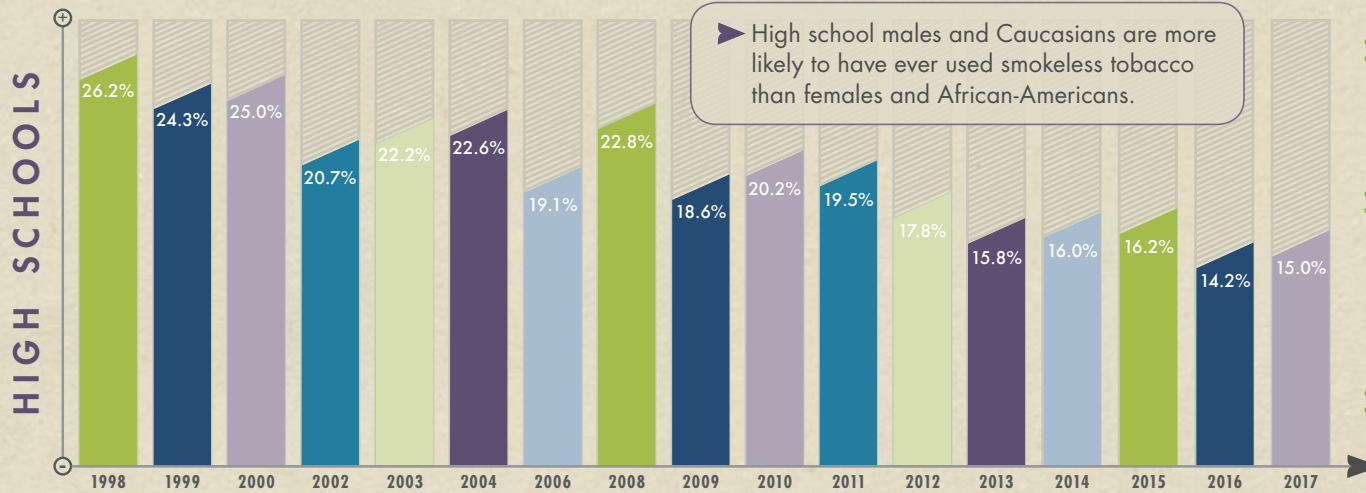


- * In 2017, **3,215 Mississippi public middle school students** had used SLT on at least one of the past 30 days.
- * The prevalence of current SLT use has **decreased by 69%** since 1998, leading to **7,073 fewer young SLT users**.
- * In the past year, the prevalence of current SLT use *has not changed significantly*.

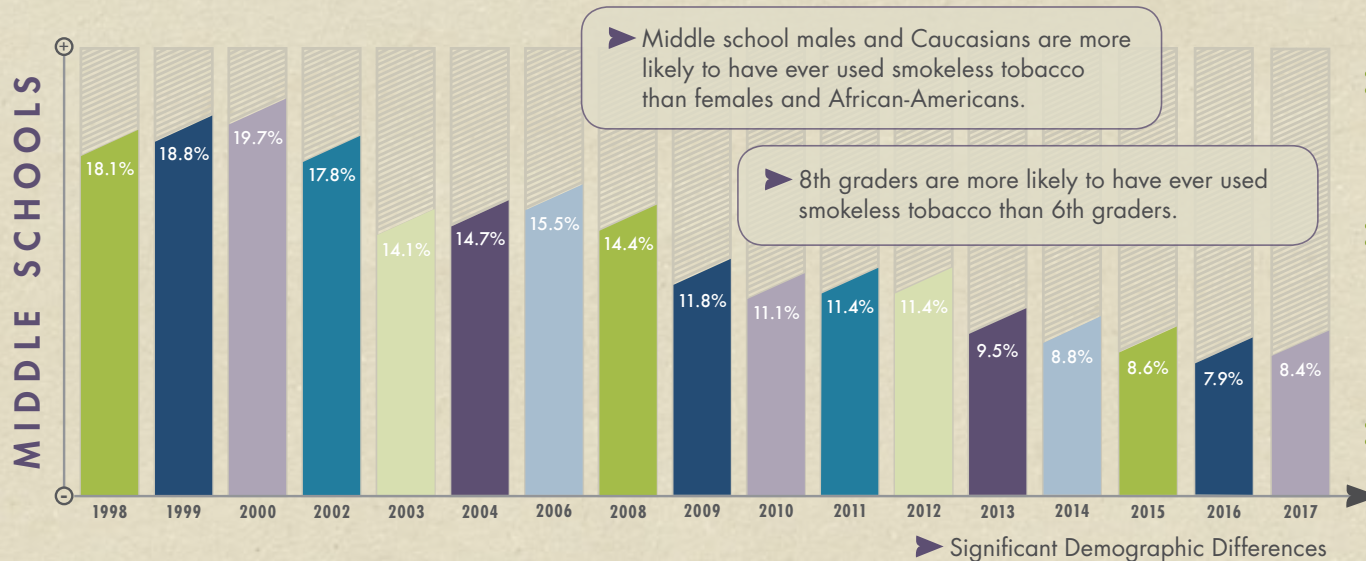
► Significant Demographic Differences

ever tried smokeless tobacco

MISSISSIPPI PUBLIC SCHOOLS



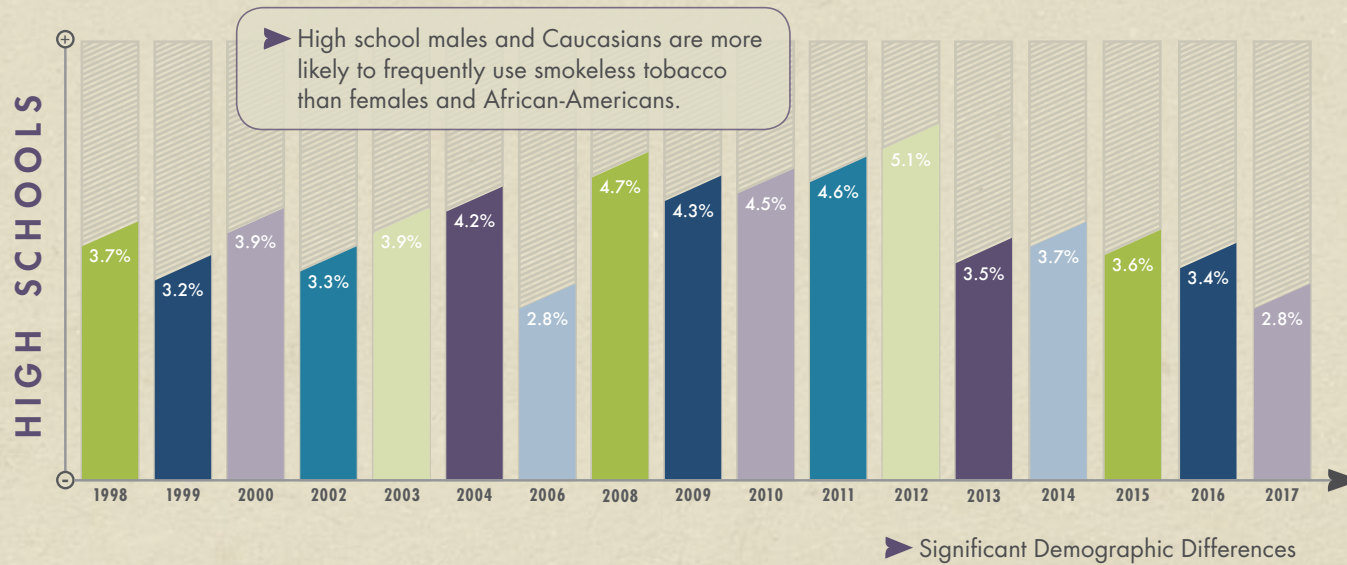
- * In 2017, **19,902 Mississippi public high school students** had tried SLT at least one time.
- * The prevalence of having ever tried SLT has **decreased by 43%** since 1998, leading to 14,860 fewer high school students who have tried SLT.
- * In the past year, the prevalence of having ever tried SLT **has not changed significantly.**



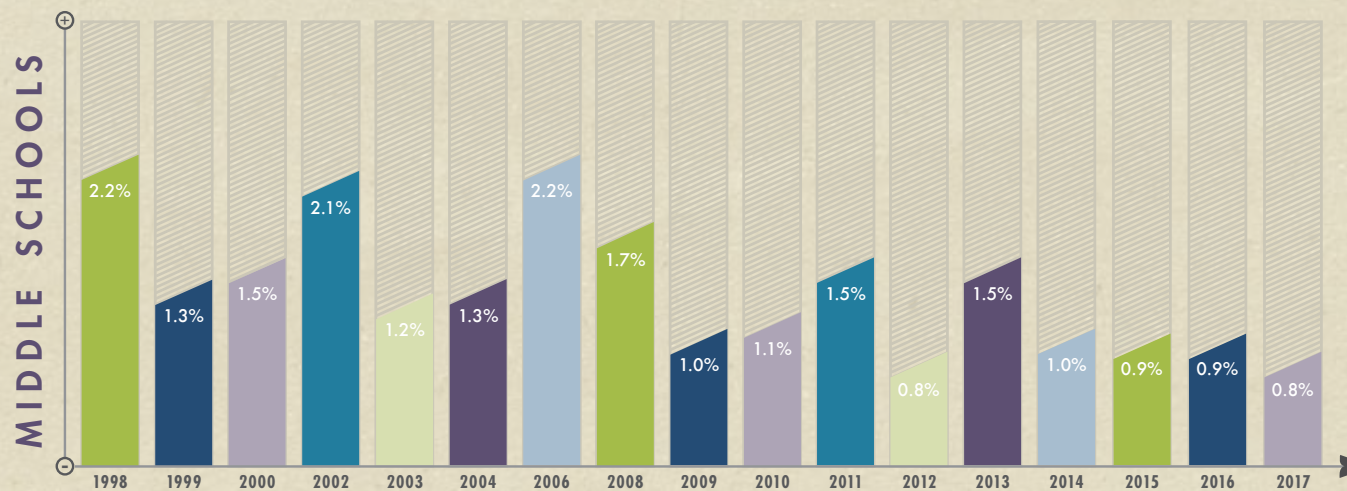
- * In 2017, **9,002 Mississippi public middle school students** had tried SLT at least one time.
- * The prevalence of having ever tried SLT has **decreased by 54%** since 1998, leading to 10,395 fewer middle school students who have tried SLT.
- * In the past year, the prevalence of having ever tried SLT **has not changed significantly.**

frequent smokeless tobacco use

MISSISSIPPI PUBLIC SCHOOLS



- * In 2017, 3,715 Mississippi public high school students had used SLT on at least 20 of the past 30 days.
- * Since 1998, the prevalence of frequent SLT use *has not changed significantly*.
- * In the past year, the prevalence of frequent SLT use *has not changed significantly*.

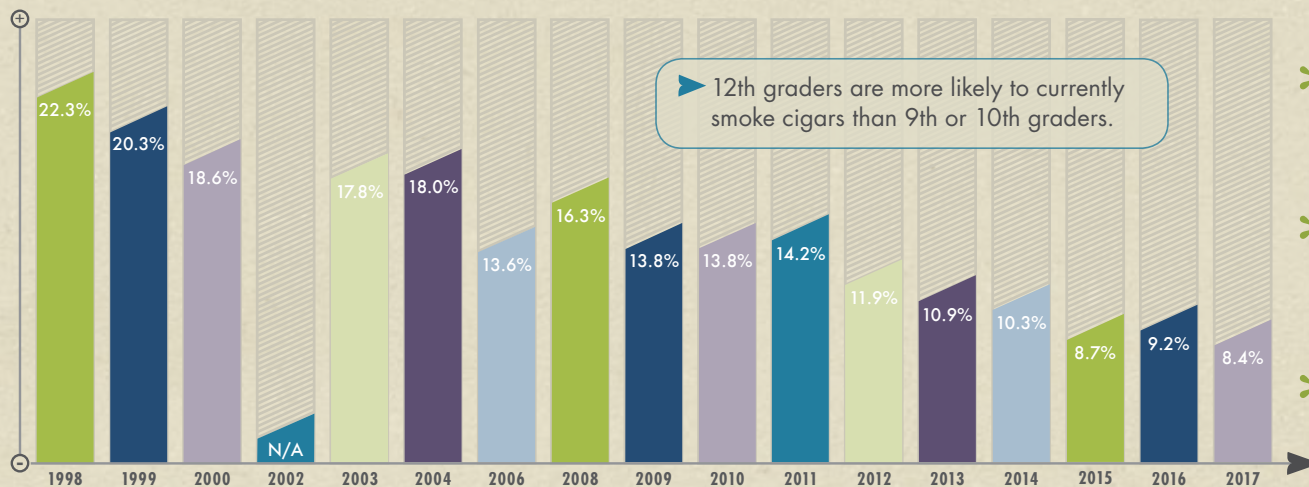


- * In 2017, 857 Mississippi public middle school students had used SLT on at least 20 of the past 30 days.
- * Since 1998, the prevalence of frequent SLT use *has not changed significantly*.
- * In the past year, the prevalence of frequent SLT use *has not changed significantly*.

current cigar smoking

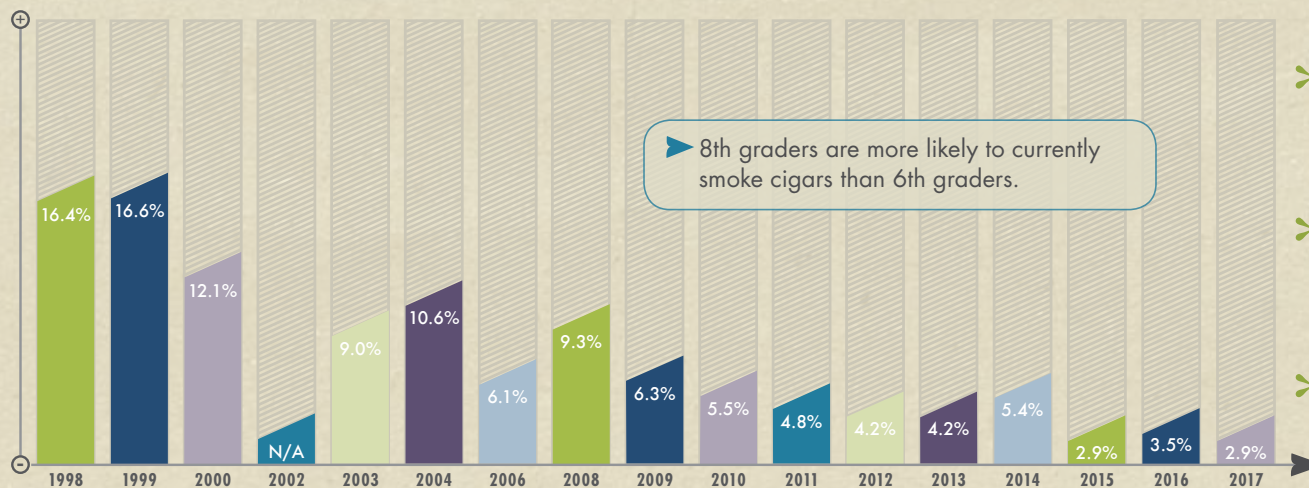
MISSISSIPPI PUBLIC SCHOOLS

HIGH SCHOOLS



- * In 2017, 11,145 Mississippi public high school students had smoked cigars on at least one of the past 30 days.
- * The prevalence of current cigar smoking has decreased by 62% since 1998, leading to 18,442 fewer young cigar smokers.
- * In the past year, the prevalence of current cigar smoking has not changed significantly.

MIDDLE SCHOOLS

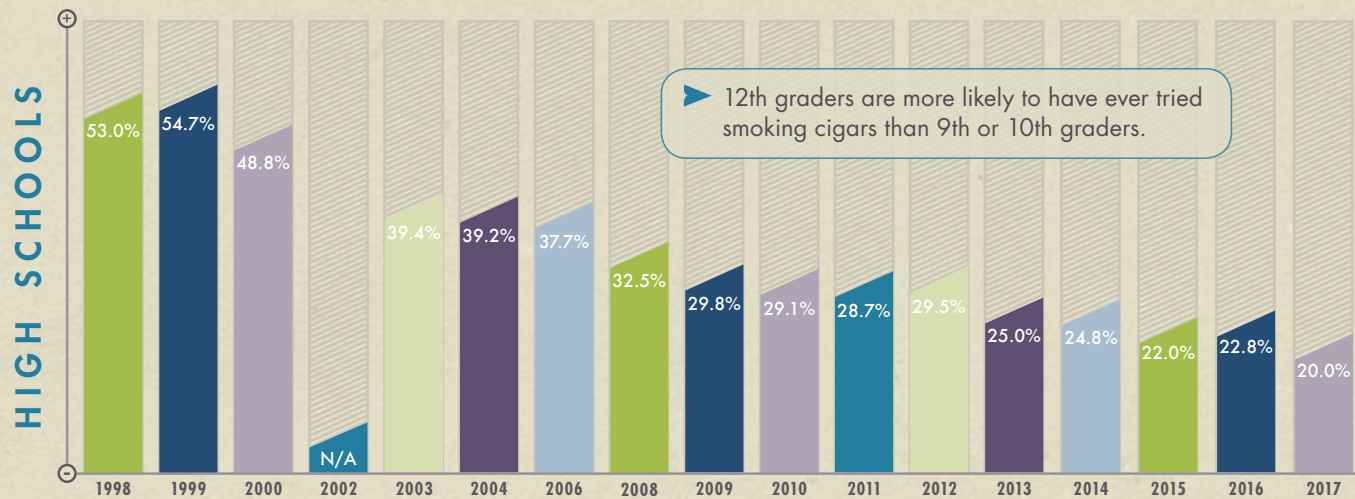


- * In 2017, 3,108 Mississippi public middle school students had smoked cigars on at least one of the past 30 days.
- * The prevalence of current cigar smoking has decreased by 82% since 1998, leading to 14,467 fewer young cigar smokers.
- * In the past year, the prevalence of current cigar smoking has not changed significantly.

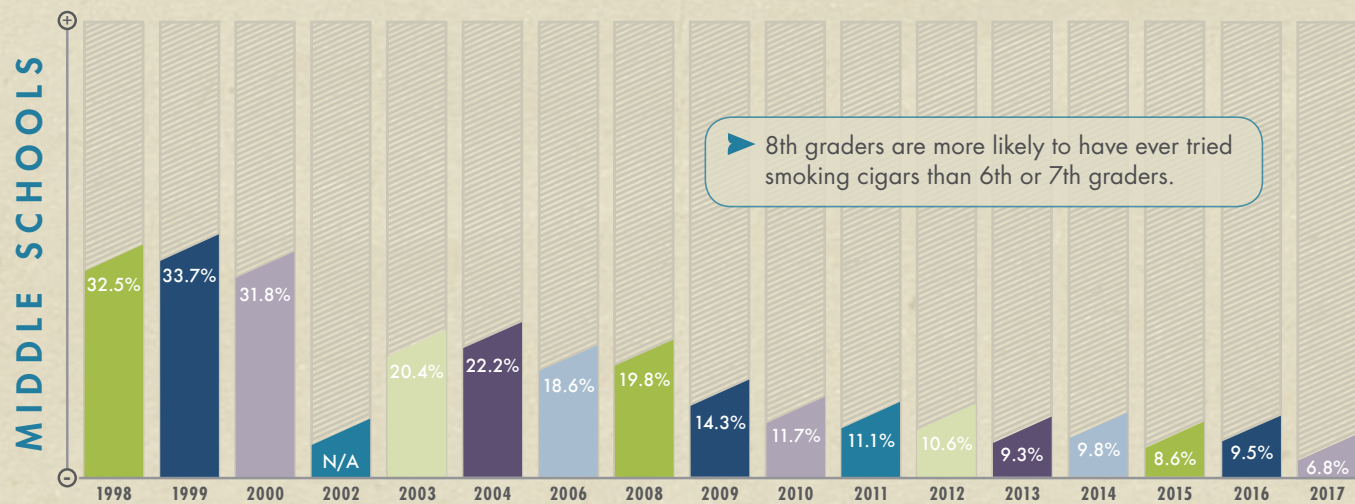
▶ Significant Demographic Differences

ever tried a cigar

MISSISSIPPI PUBLIC SCHOOLS



- * In 2017, *26,536 Mississippi public high school students* had tried at least one cigar.
- * The prevalence of having ever tried a cigar has *decreased by 62%* since 1998, leading to 43,784 fewer high school students who have tried cigar smoking.
- * In the past year, the prevalence of having ever tried smoking cigars *has not changed significantly*.



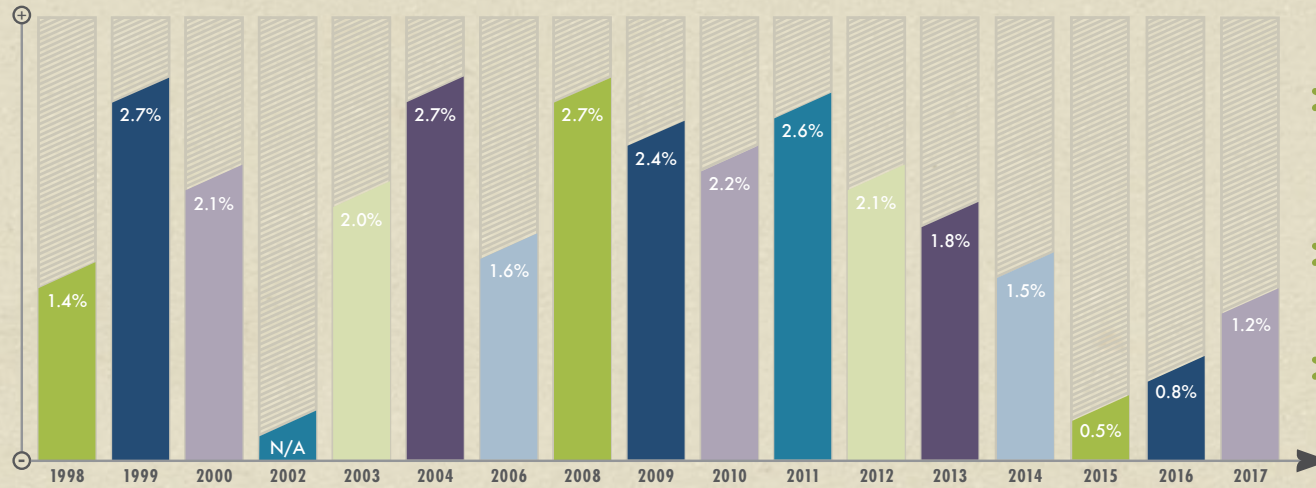
- * In 2017, *7,287 Mississippi public middle school students* had tried at least one cigar.
- * The prevalence of having ever tried a cigar has *decreased by 79%* since 1998, leading to 27,541 fewer middle school students who have tried cigar smoking.
- * In the past year, the prevalence of having ever tried smoking cigars *has not changed significantly*.

▶ Significant Demographic Differences

frequent cigar smoking

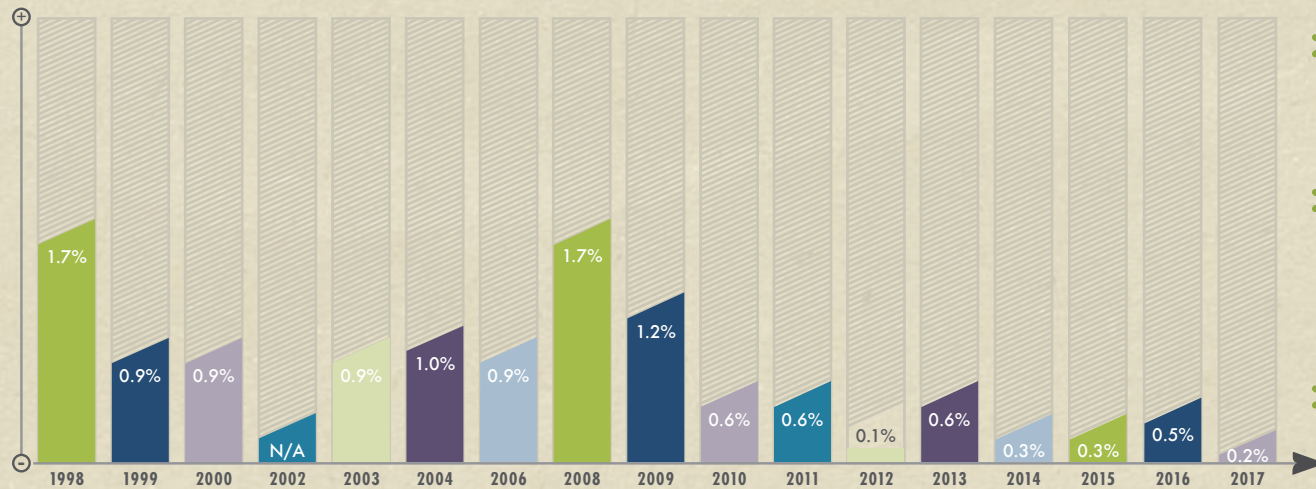
MISSISSIPPI PUBLIC SCHOOLS

HIGH SCHOOLS



- * In 2017, *1,592 Mississippi public high school students* had smoked cigars on at least 20 of the past 30 days.
- * Since 1998, the prevalence of frequent cigar smoking *has not changed significantly*.
- * In the past year, the prevalence of frequent cigar smoking *has not changed significantly*.

MIDDLE SCHOOLS

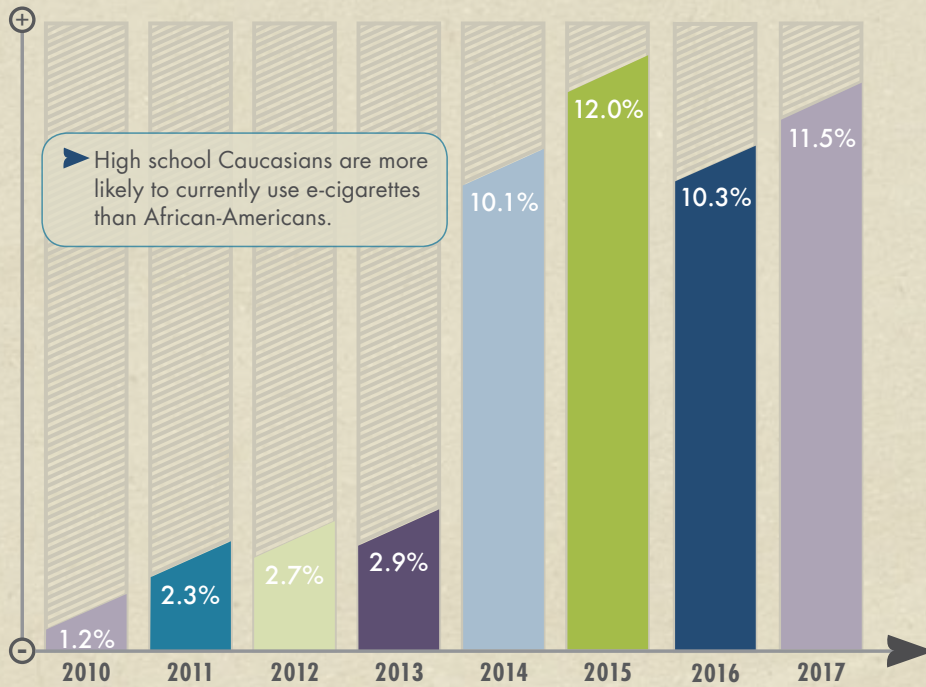


- * In 2017, *214 Mississippi public middle school students* had smoked cigars on at least 20 of the past 30 days.
- * Frequent cigar smoking has *decreased by 88%* since 1998, leading to 1,607 fewer middle school students who are frequent cigar smokers.
- * In the past year, the prevalence of frequent cigar smoking *has not changed significantly*.

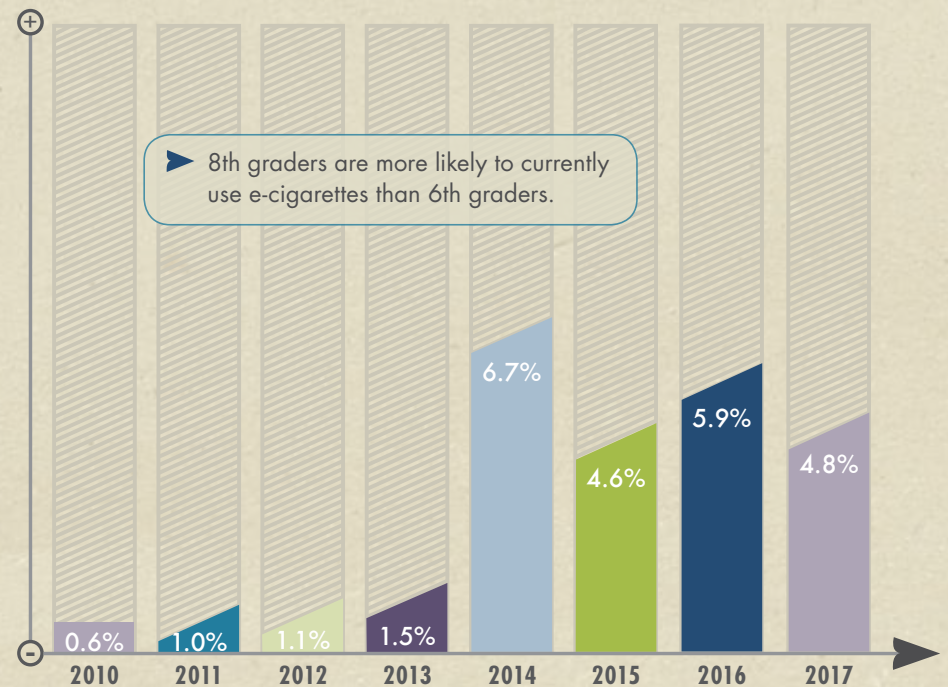
current electronic cigarette use

MISSISSIPPI PUBLIC SCHOOLS

HIGH SCHOOLS {2010-2017}



MIDDLE SCHOOLS {2010-2017}



► Significant Demographic Differences

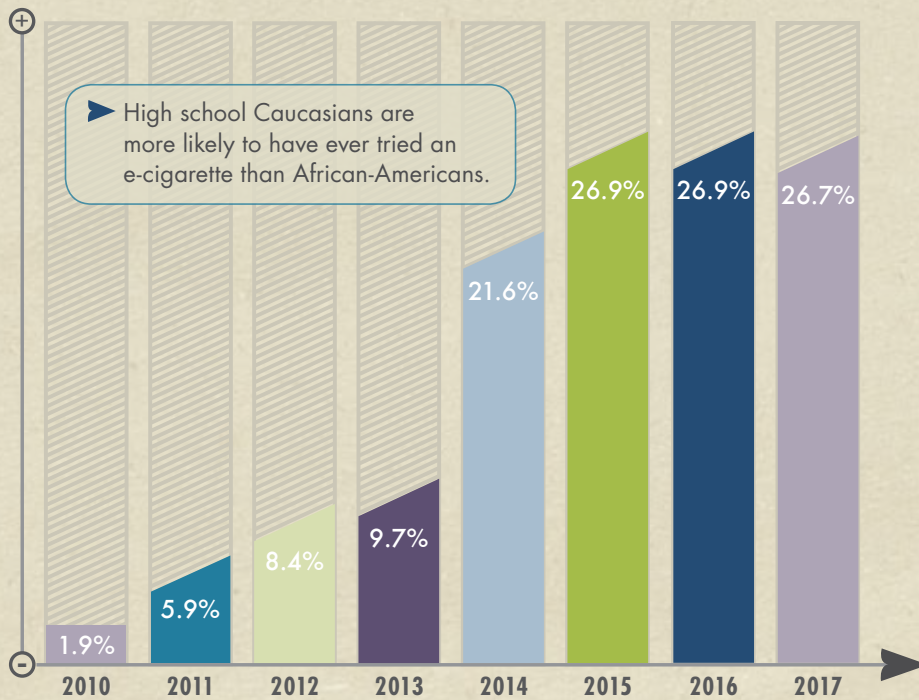


Changes between 2013 and 2014 in the wording and placement of questions about the use of e-cigarettes might have had an impact on reported use of these products.

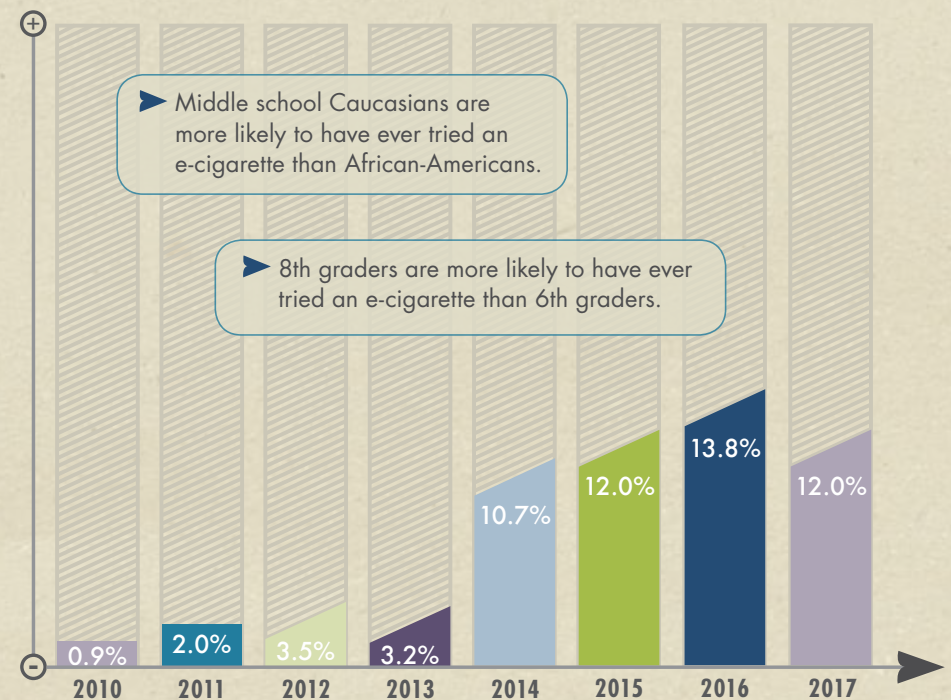
ever tried an electronic cigarette

MISSISSIPPI PUBLIC SCHOOLS

HIGH SCHOOLS {2010-2017}



MIDDLE SCHOOLS {2010-2017}



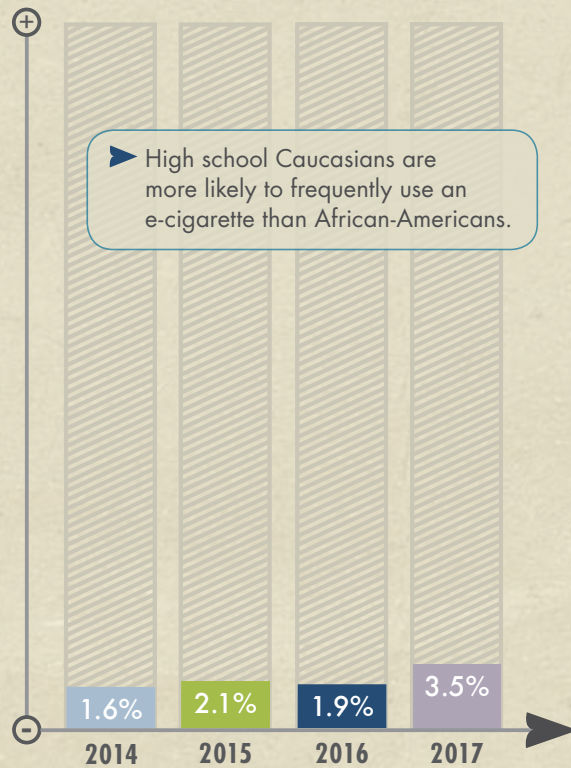
Significant Demographic Differences

Changes between 2013 and 2014 in the wording and placement of questions about the use of e-cigarettes might have had an impact on reported use of these products.

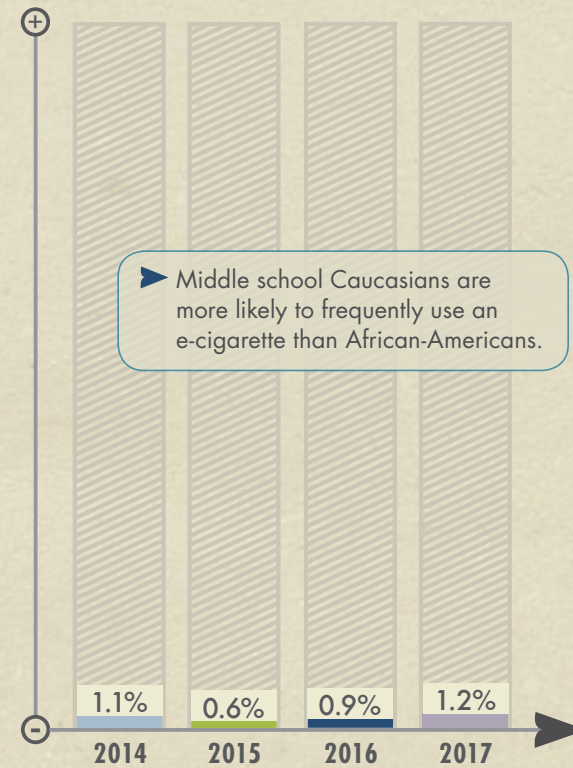
frequent electronic cigarette use

MISSISSIPPI PUBLIC SCHOOLS

HIGH SCHOOLS {2010-2017}



MIDDLE SCHOOLS {2010-2017}



► Significant Demographic Differences



Change in Cigarette Smoking

Current Cigarette Smoking
(Public High School)

	1998	2017	% Change
Overall	30.3%	7.2%	↓ 76.2%*
Female	27.1%	6.2%	↓ 77.1%*
Male	33.9%	8.2%	↓ 75.8%*
White	43.8%	12.4%	↓ 71.7%*
Black	14.2%	2.0%	↓ 85.9%*
9th	27.6%	3.3%	↓ 88.0%*
10th	31.4%	6.3%	↓ 79.9%*
11th	33.5%	8.0%	↓ 76.1%*
12th	29.4%	11.7%	↓ 60.2%*

Ever Tried a Cigarette
(Public High School)

	1998	2017	% Change
Overall	75.6%	32.9%	↓ 56.5%*
Female	72.6%	33.6%	↓ 53.7%*
Male	78.7%	32.7%	↓ 58.5%*
White	79.4%	41.8%	↓ 47.4%*
Black	70.6%	24.0%	↓ 66.0%*
9th	73.1%	23.8%	↓ 67.4%*
10th	75.0%	31.9%	↓ 57.5%*
11th	76.9%	34.4%	↓ 55.3%*
12th	78.2%	43.4%	↓ 44.5%*

Frequent Cigarette Smoking
(Public High School)

	1998	2017	% Change
Overall	14.3%	1.7%	↓ 88.1%*
Female	11.6%	1.8%	↓ 84.5%*
Male	17.3%	1.8%	↓ 89.6%*
White	23.2%	2.6%	↓ 88.8%*
Black	3.4%	0.8%	N/A
9th	8.3%	1.0%	↓ 88.0%*
10th	16.7%	1.3%	↓ 92.2%*
11th	17.9%	1.1%	↓ 93.9%*
12th	16.1%	3.4%	↓ 78.9%*

Current Cigarette Smoking
(Public Middle School)

	1998	2017	% Change
Overall	20.6%	1.5%	↓ 92.7%*
Female	18.2%	1.1%	↓ 94.0%*
Male	23.0%	1.8%	↓ 92.2%*
White	22.8%	2.2%	↓ 90.4%*
Black	17.6%	0.7%	↓ 96.0%*
6th	11.9%	1.0%	↓ 91.6%*
7th	21.8%	1.3%	↓ 94.0%*
8th	25.8%	2.1%	↓ 91.9%*

Ever Tried a Cigarette
(Public Middle School)

	1998	2017	% Change
Overall	54.3%	12.7%	↓ 76.6%*
Female	51.2%	11.3%	↓ 77.9%*
Male	57.3%	14.0%	↓ 75.6%*
White	52.0%	11.8%	↓ 77.3%*
Black	56.3%	13.0%	↓ 76.9%*
6th	41.8%	7.1%	↓ 83.0%*
7th	55.0%	11.8%	↓ 78.6%*
8th	64.0%	19.5%	↓ 69.5%*

Frequent Cigarette Smoking
(Public Middle School)

	1998	2017	% Change
Overall	5.2%	0.3%	↓ 94.2%*
Female	3.6%	0.2%	N/A*
Male	6.8%	0.5%	↓ 92.7%*
White	6.4%	0.6%	↓ 90.6%*
Black	2.6%	0.0%	N/A
6th	1.2%	0.0%	N/A
7th	5.1%	0.4%	↓ 92.2%*
8th	7.1%	0.5%	↓ 93.0%*

KEY

{ (↓) decrease (*), significant (↑) increase }

Change in Smokeless Tobacco Use

Current Smokeless Tobacco Use
(Public High School)

	1998	2017	% Change
Overall	9.4%	6.6%	↓ 29.8%
Female	1.3%	3.1%	N/A
Male	18.1%	10.2%	↓ 43.7%*
White	16.0%	10.1%	↓ 36.9%*
Black	1.5%	3.1%	N/A
9th	9.1%	5.5%	↓ 39.6%
10th	11.7%	6.4%	↓ 45.3%
11th	6.8%	5.7%	↓ 16.2%
12th	8.6%	8.9%	↑ 3.5%

Ever Tried Smokeless Tobacco
(Public High School)

	1998	2017	% Change
Overall	26.2%	15.0%	↓ 42.8%*
Female	11.4%	9.1%	↓ 20.2%
Male	42.2%	21.2%	↓ 49.8%*
White	38.5%	22.2%	↓ 42.3%*
Black	11.6%	7.8%	↓ 32.8%
9th	25.7%	11.3%	↓ 56.0%*
10th	27.0%	14.7%	↓ 45.6%*
11th	25.4%	15.4%	↓ 39.4%
12th	25.8%	19.5%	↓ 24.4%

Frequent Smokeless Tobacco Use
(Public High School)

	1998	2017	% Change
Overall	3.7%	2.8%	N/A
Female	0.4%	1.2%	N/A
Male	7.3%	4.6%	↓ 37.0%
White	6.4%	4.2%	↓ 34.4%
Black	0.2%	1.2%	N/A
9th	2.2%	2.0%	N/A
10th	5.5%	2.8%	↓ 49.1%
11th	3.7%	1.7%	N/A
12th	3.5%	4.8%	N/A

Current Smokeless Tobacco Use
(Public Middle School)

	1998	2017	% Change
Overall	9.6%	3.0%	↓ 68.8%*
Female	4.2%	1.5%	N/A
Male	14.8%	4.6%	↓ 68.9%*
White	12.7%	4.9%	↓ 61.4%*
Black	4.8%	1.4%	N/A*
6th	6.5%	1.4%	↓ 78.5%*
7th	8.7%	2.3%	↓ 73.6%*
8th	12.0%	5.5%	↓ 54.2%

Ever Tried Smokeless Tobacco
(Public Middle School)

	1998	2017	% Change
Overall	18.1%	8.4%	↓ 53.6%*
Female	7.2%	5.2%	↓ 27.8%
Male	28.5%	11.4%	↓ 60.0%*
White	24.0%	11.8%	↓ 50.8%*
Black	10.5%	5.0%	↓ 52.4%*
6th	12.9%	4.7%	↓ 63.6%*
7th	19.0%	8.0%	↓ 57.9%*
8th	20.7%	12.6%	↓ 39.1%

Frequent Smokeless Tobacco Use
(Public Middle School)

	1998	2017	% Change
Overall	2.2%	0.8%	N/A
Female	0.9%	0.3%	N/A
Male	3.5%	1.3%	N/A
White	2.4%	1.6%	N/A
Black	1.0%	0.0%	N/A
6th	0.5%	0.2%	N/A
7th	1.7%	1.3%	N/A
8th	3.0%	0.9%	N/A

KEY

{ (↓) decrease (*) significant
(↑) increase }

Change in Cigar Smoking

Current Cigar Smoking
(Public High School)

	1998	2017	% Change
Overall	22.3%	8.4%	↓ 62.3%*
Female	13.8%	7.5%	↓ 45.7%*
Male	31.1%	9.3%	↓ 70.1%*
White	23.5%	9.4%	↓ 60.0%*
Black	20.1%	6.8%	↓ 66.2%*
9th	18.9%	5.7%	↓ 69.8%*
10th	24.7%	6.9%	↓ 72.1%*
11th	23.8%	8.1%	↓ 66.0%*
12th	22.0%	13.3%	↓ 39.6%

Ever Tried a Cigar
(Public High School)

	1998	2017	% Change
Overall	53.0%	20.0%	↓ 62.3%*
Female	43.2%	18.2%	↓ 57.9%*
Male	63.5%	21.7%	↓ 65.8%*
White	54.4%	22.3%	↓ 59.0%*
Black	51.1%	17.1%	↓ 66.5%*
9th	50.0%	14.7%	↓ 70.6%*
10th	49.9%	18.2%	↓ 63.5%*
11th	57.5%	18.7%	↓ 67.5%*
12th	56.9%	28.8%	↓ 49.4%*

Frequent Cigar Smoking
(Public High School)

	1998	2017	% Change
Overall	1.4%	1.2%	N/A
Female	0.2%	1.5%	N/A
Male	2.6%	0.9%	N/A
White	1.5%	1.3%	N/A
Black	0.9%	0.8%	N/A
9th	1.1%	0.7%	N/A
10th	1.8%	0.9%	N/A
11th	1.0%	1.0%	N/A
12th	1.4%	2.4%	N/A

Current Cigar Smoking
(Public Middle School)

	1998	2017	% Change
Overall	16.4%	2.9%	↓ 82.3%*
Female	12.3%	2.4%	↓ 80.5%*
Male	20.4%	3.5%	↓ 82.8%*
White	12.3%	3.1%	↓ 74.8%*
Black	19.9%	2.5%	↓ 87.4%*
6th	7.9%	1.0%	↓ 87.3%*
7th	17.1%	2.7%	↓ 84.2%*
8th	21.2%	5.0%	↓ 76.4%*

Ever Tried a Cigar
(Public Middle School)

	1998	2017	% Change
Overall	32.5%	6.8%	↓ 79.1%*
Female	24.2%	6.4%	↓ 73.6%*
Male	40.7%	7.1%	↓ 82.6%*
White	29.2%	6.2%	↓ 78.8%*
Black	35.6%	6.9%	↓ 80.6%*
6th	19.2%	3.0%	↓ 84.4%*
7th	35.5%	5.5%	↓ 84.5%*
8th	40.2%	11.7%	↓ 70.9%*

Frequent Cigar Smoking
(Public Middle School)

	1998	2017	% Change
Overall	1.7%	0.2%	N/A*
Female	0.9%	0.0%	N/A
Male	2.4%	0.3%	N/A*
White	1.3%	0.3%	N/A
Black	1.7%	0.0%	N/A
6th	0.2%	0.0%	N/A
7th	1.0%	0.2%	N/A
8th	1.9%	0.3%	N/A

KEY

{ (↓) decrease (*) significant (↑) increase }

Change in *Electronic Cigarette Use*

Current Electronic Cigarette Smoking
(Public High School)

	2010	2017	% Change
Overall	1.2%	11.5%	N/A*
Female	1.1%	10.0%	N/A*
Male	1.3%	13.3%	N/A*
White	1.8%	16.7%	N/A*
Black	0.6%	6.4%	N/A*
9th	1.2%	9.0%	N/A*
10th	0.9%	11.7%	N/A*
11th	0.3%	10.5%	N/A*
12th	2.5%	15.2%	N/A*

Ever Tried an Electronic Cigarette
(Public High School)

	2010	2017	% Change
Overall	1.9%	26.7%	N/A*
Female	1.8%	26.4%	N/A*
Male	1.9%	27.5%	N/A*
White	3.1%	36.8%	N/A*
Black	0.7%	15.8%	N/A*
9th	1.6%	21.6%	N/A*
10th	1.2%	26.9%	N/A*
11th	1.2%	29.3%	N/A*
12th	3.8%	30.0%	N/A*

Frequent Electronic Cigarette Smoking
(Public High School)

	2014	2017	% Change
Overall	1.6%	3.5%	N/A
Female	0.9%	2.6%	N/A
Male	2.2%	4.5%	N/A
White	1.8%	5.2%	N/A
Black	0.9%	1.6%	N/A
9th	0.7%	2.1%	N/A
10th	1.5%	2.8%	N/A
11th	2.2%	4.2%	N/A
12th	2.1%	5.0%	N/A

Current Electronic Cigarette Smoking
(Public Middle School)

	2010	2017	% Change
Overall	0.6%	4.8%	N/A*
Female	0.5%	4.6%	N/A*
Male	0.8%	5.1%	N/A*
White	1.1%	6.5%	N/A*
Black	0.3%	2.8%	N/A*
6th	0.7%	2.2%	N/A
7th	0.3%	4.4%	N/A*
8th	1.0%	8.0%	N/A*

Ever Tried an Electronic Cigarette
(Public Middle School)

	2010	2017	% Change
Overall	0.9%	12.0%	N/A*
Female	0.7%	12.0%	N/A*
Male	1.0%	11.9%	N/A*
White	1.4%	16.4%	N/A*
Black	0.4%	8.1%	N/A*
6th	0.8%	7.3%	N/A*
7th	0.5%	12.0%	N/A*
8th	1.3%	16.5%	N/A*

Frequent Electronic Cigarette Smoking
(Public Middle School)

	2014	2017	% Change
Overall	1.1%	1.2%	N/A
Female	0.4%	1.4%	N/A
Male	1.6%	1.0%	N/A
White	1.1%	1.9%	N/A
Black	1.0%	0.3%	N/A
6th	0.4%	0.0%	N/A
7th	0.8%	0.6%	N/A
8th	2.2%	3.0%	N/A

KEY

{ (↓) decrease (*) significant (↑) increase }



Mississippi Youth Tobacco Use {1998-2017} Current Cigarette Smoking - Public High School

APPENDIX { CIGARETTES }

	2017	2016	2015	2014	2013	2012	2011	2010	2009
TOTAL	7.2 (±1.9)	9.4 (±1.8)	9.9 (±1.9)	12.2 (±2.5)	13.3 (±3.0)	18.1 (±4.0)	19.0 (±3.8)	19.7 (±2.5)	18.8 (±2.2)
SEX									
FEMALE	6.2 (±2.1)	9.0 (±2.8)	5.9 (±1.7)	9.6 (±2.4)	11.4 (±3.7)	15.8 (±4.6)	13.9 (±3.3)	17.8 (±3.6)	15.6 (±3.0)
MALE	8.2 (±2.0)	9.9 (±1.9)	14.1 (±3.0)	14.9 (±3.3)	15.2 (±3.2)	20.3 (±4.9)	24.3 (±5.3)	21.5 (±3.0)	22.2 (±3.1)
RACE									
WHITE	12.4 (±2.0)	14.9 (±3.7)	16.0 (±2.2)	17.5 (±4.3)	20.2 (±3.9)	25.6 (±6.0)	27.9 (±4.5)	29.0 (±3.3)	27.6 (±3.7)
BLACK	2.0 (±1.0)	4.4 (±1.5)	3.4 (±1.8)	7.1 (±1.7)	7.1 (±2.9)	11.2 (±3.1)	11.1 (±3.6)	11.1 (±2.1)	9.8 (±2.5)
GRADE									
9	3.3 (±1.5)	5.2 (±2.3)	6.8 (±2.4)	8.9 (±2.7)	6.9 (±3.9)	10.8 (±3.6)	12.8 (±5.8)	14.7 (±4.2)	14.4 (±3.5)
10	6.3 (±2.7)	7.4 (±2.8)	11.4 (±3.5)	9.7 (±3.1)	12.5 (±5.1)	20.8 (±6.4)	19.2 (±5.7)	20.0 (±4.7)	20.0 (±3.3)
11	8.0 (±4.2)	12.2 (±4.2)	7.6 (±3.3)	12.8 (±5.5)	14.7 (±4.8)	19.6 (±5.9)	19.4 (±5.2)	22.0 (±4.1)	19.8 (±3.1)
12	11.7 (±3.3)	14.0 (±4.7)	14.4 (±5.4)	19.7 (±7.0)	21.3 (±5.3)	22.6 (±9.3)	27.0 (±5.1)	23.9 (±6.3)	22.8 (±6.3)

	2008	2006	2004	2003	2002	2000	1999	1998
TOTAL	20.2 (±4.4)	18.7 (±5.1)	22.1 (±2.6)	23.4 (±1.5)	23.1 (±2.6)	29.2 (±3.6)	32.5 (±3.3)	30.3 (±3.0)
SEX								
FEMALE	15.7 (±3.8)	16.9 (±5.5)	19.7 (±2.9)	20.6 (±2.0)	21.1 (±3.6)	26.2 (±5.9)	30.7 (±5.2)	27.1 (±4.6)
MALE	24.8 (±5.8)	20.1 (±5.5)	24.3 (±3.1)	26.0 (±1.9)	25.1 (±3.1)	32.3 (±4.6)	34.4 (±4.2)	33.9 (±4.0)
RACE								
WHITE	28.9 (±5.4)	25.9 (±4.7)	29.9 (±3.8)	31.0 (±2.3)	29.3 (±2.7)	41.7 (±5.9)	42.7 (±4.8)	43.8 (±4.2)
BLACK	10.1 (±6.0)	11.6 (±3.5)	14.1 (±2.8)	14.1 (±1.4)	16.7 (±4.0)	13.3 (±3.0)	16.6 (±3.2)	14.2 (±2.7)
GRADE								
9	17.7 (±7.4)	17.0 (±4.3)	19.8 (±4.3)	22.4 (±2.6)	20.0 (±4.4)	25.3 (±5.3)	28.2 (±4.1)	27.6 (±5.0)
10	19.0 (±6.1)	12.9 (±7.4)	22.9 (±4.3)	21.8 (±2.4)	19.7 (±2.7)	27.6 (±5.5)	30.3 (±5.6)	31.4 (±6.6)
11	15.5 (±7.5)	20.1 (±5.9)	22.7 (±4.6)	24.2 (±2.8)	27.1 (±5.9)	32.9 (±8.5)	38.3 (±8.3)	33.5 (±6.5)
12	29.9 (±8.2)	27.5 (±6.1)	24.6 (±6.4)	25.5 (±2.4)	26.6 (±5.8)	32.6 (±8.9)	35.1 (±6.7)	29.4 (±6.8)

Mississippi Youth Tobacco Use {1998-2017} Current Cigarette Smoking - Public Middle School

	2017	2016	2015	2014	2013	2012	2011	2010	2009
TOTAL	1.5 (±0.7)	3.8 (±1.0)	3.0 (±0.9)	4.7 (±1.5)	4.1 (±1.3)	5.8 (±1.8)	5.8 (±1.8)	5.7 (±1.5)	7.2 (±1.7)
SEX									
FEMALE	1.1 (±0.6)	2.5 (±1.0)	2.5 (±1.2)	3.2 (±1.4)	3.4 (±1.6)	5.0 (±2.0)	4.7 (±2.5)	4.4 (±1.8)	6.2 (±1.8)
MALE	1.8 (±1.0)	4.9 (±2.0)	3.5 (±1.1)	6.2 (±2.3)	4.6 (±1.5)	6.6 (±2.4)	6.7 (±2.2)	6.8 (±1.9)	8.0 (±2.5)
RACE									
WHITE	2.2 (±1.3)	4.1 (±1.2)	4.1 (±1.4)	4.9 (±2.7)	4.9 (±1.8)	7.7 (±2.7)	6.0 (±2.1)	6.2 (±2.0)	8.8 (±3.1)
BLACK	0.7 (±0.4)	3.3 (±1.7)	1.9 (±1.2)	4.4 (±2.0)	3.1 (±1.4)	3.8 (±2.0)	5.1 (±2.5)	5.2 (±2.4)	5.6 (±2.0)
GRADE									
6	1.0 (±0.8)	2.6 (±2.0)	1.0 (±0.8)	2.2 (±2.0)	2.9 (±1.2)	2.8 (±1.9)	2.4 (±1.2)	2.8 (±1.8)	3.6 (±2.0)
7	1.3 (±1.3)	4.1 (±1.9)	3.4 (±1.6)	3.9 (±2.0)	3.5 (±1.6)	4.4 (±2.5)	5.6 (±2.1)	6.5 (±1.7)	6.7 (±2.7)
8	2.1 (±1.7)	4.5 (±1.8)	4.5 (±1.7)	8.0 (±3.6)	6.0 (±2.2)	10.6 (±3.2)	8.0 (±3.9)	7.8 (±3.2)	11.1 (±3.6)

	2008	2006	2004	2003	2002	2000	1999	1998
TOTAL	8.9 (±2.0)	8.4 (±1.6)	12.0 (±2.0)	11.0 (±1.2)	11.9 (±1.6)	18.1 (±2.3)	23.0 (±3.2)	20.6 (±3.1)
SEX								
FEMALE	6.9 (±2.8)	7.8 (±2.4)	11.0 (±2.5)	9.8 (±1.3)	11.5 (±2.0)	16.9 (±2.6)	19.4 (±2.6)	18.2 (±4.8)
MALE	11.0 (±2.3)	9.0 (±2.6)	12.8 (±2.8)	12.0 (±1.4)	12.1 (±1.8)	19.2 (±3.5)	26.1 (±4.8)	23.0 (±3.4)
RACE								
WHITE	11.2 (±3.0)	9.9 (±2.6)	13.5 (±3.4)	10.7 (±1.5)	13.3 (±2.0)	20.9 (±3.6)	23.4 (±3.7)	22.8 (±4.4)
BLACK	6.9 (±1.9)	7.0 (±2.3)	10.2 (±2.1)	10.8 (±1.4)	8.8 (±2.9)	15.0 (±3.5)	21.8 (±5.0)	17.6 (±4.0)
GRADE								
6	4.4 (±2.8)	4.0 (±2.1)	6.8 (±1.9)	7.1 (±1.3)	8.8 (±2.1)	13.6 (±4.2)	17.7 (±4.5)	11.9 (±4.7)
7	10.1 (±3.1)	7.2 (±2.2)	13.6 (±3.5)	10.8 (±1.8)	14.9 (±2.7)	22.0 (±2.7)	21.8 (±4.1)	21.8 (±7.7)
8	12.5 (±3.8)	13.5 (±2.6)	15.1 (±4.5)	14.9 (±1.8)	14.7 (±3.7)	18.5 (±4.1)	29.0 (±5.2)	25.8 (±5.3)

Mississippi Youth Tobacco Use {1998-2017} Ever Tried a Cigarette - Public High School

	2017	2016	2015	2014	2013	2012	2011	2010	2009
TOTAL	32.9 (±4.0)	32.1 (±2.6)	35.8 (±5.0)	37.4 (±3.7)	39.8 (±5.3)	46.7 (±3.2)	46.8 (±5.1)	51.2 (±3.2)	48.0 (±3.1)
SEX									
FEMALE	33.6 (±4.3)	30.4 (±4.4)	28.0 (±5.4)	33.4 (±3.7)	36.6 (±5.6)	42.7 (±4.2)	41.8 (±5.4)	48.7 (±4.0)	43.5 (±4.1)
MALE	32.7 (±5.2)	33.6 (±2.9)	43.2 (±6.1)	41.0 (±4.9)	43.0 (±6.1)	50.7 (±4.7)	52.4 (±6.4)	53.5 (±4.7)	53.1 (±3.6)
RACE									
WHITE	41.8 (±3.3)	41.1 (±4.5)	44.2 (±5.8)	43.0 (±4.5)	45.3 (±6.2)	51.8 (±5.7)	55.5 (±5.7)	59.0 (±5.0)	53.2 (±5.0)
BLACK	24.0 (±4.5)	23.3 (±2.9)	26.7 (±5.6)	31.3 (±4.0)	34.7 (±5.9)	41.6 (±4.6)	38.8 (±5.7)	44.0 (±4.0)	42.6 (±4.1)
GRADE									
9	23.8 (±3.3)	26.8 (±5.8)	26.1 (±6.5)	30.3 (±5.9)	27.2 (±7.9)	35.2 (±5.8)	41.9 (±8.7)	42.9 (±5.4)	42.3 (±4.8)
10	31.9 (±7.1)	29.3 (±5.5)	37.3 (±5.8)	37.1 (±6.7)	42.3 (±6.4)	50.5 (±7.5)	48.5 (±10.0)	49.9 (±5.3)	50.4 (±4.3)
11	34.4 (±7.1)	37.1 (±6.9)	38.6 (±7.4)	39.8 (±5.9)	44.0 (±9.9)	49.1 (±5.6)	43.4 (±8.4)	56.6 (±6.8)	48.0 (±7.1)
12	43.4 (±5.0)	37.0 (±6.1)	44.0 (±12.2)	44.4 (±8.6)	48.3 (±8.4)	54.4 (±10.9)	55.2 (±6.1)	58.7 (±5.9)	53.3 (±6.5)

	2008	2006	2004	2003	2002	2000	1999	1998
TOTAL	54.0 (±4.5)	61.2 (±3.9)	59.4 (±2.5)	60.7 (±1.7)	61.5 (±2.5)	71.5 (±2.2)	77.2 (±2.4)	75.6 (±3.0)
SEX								
FEMALE	48.2 (±4.2)	61.0 (±6.9)	54.8 (±3.5)	57.4 (±2.6)	59.3 (±2.9)	70.0 (±4.0)	73.6 (±3.9)	72.6 (±3.7)
MALE	59.7 (±6.3)	61.2 (±4.2)	63.9 (±3.3)	64.2 (±1.8)	64.0 (±3.7)	73.1 (±2.9)	80.9 (±3.1)	78.7 (±3.3)
RACE								
WHITE	56.2 (±6.3)	67.1 (±8.6)	64.3 (±3.6)	63.1 (±2.1)	61.4 (±3.5)	75.5 (±4.9)	81.0 (±3.2)	79.4 (±3.3)
BLACK	50.9 (±7.4)	56.0 (±3.4)	54.2 (±4.2)	57.5 (±2.7)	61.1 (±3.8)	65.9 (±3.8)	72.3 (±4.4)	70.6 (±4.5)
GRADE								
9	51.0 (±9.3)	59.8 (±6.9)	56.3 (±4.8)	57.9 (±3.1)	54.5 (±4.9)	69.3 (±3.5)	75.2 (±3.1)	73.1 (±4.3)
10	52.1 (±6.8)	57.2 (±5.6)	58.7 (±5.4)	59.6 (±2.6)	62.4 (±3.7)	69.3 (±4.5)	77.7 (±6.8)	75.0 (±7.7)
11	48.9 (±8.3)	65.8 (±10.5)	58.4 (±6.8)	62.3 (±2.9)	65.0 (±5.2)	72.7 (±8.3)	75.8 (±6.9)	76.9 (±5.3)
12	66.7 (±7.1)	63.9 (±7.2)	67.1 (±4.9)	64.5 (±2.6)	66.5 (±4.1)	75.9 (±6.8)	80.8 (±4.6)	78.2 (±5.6)

Mississippi Youth Tobacco Use {1998-2017} Ever Tried a Cigarette - Public Middle School

	2017	2016	2015	2014	2013	2012	2011	2010	2009
TOTAL	12.7 (±2.7)	17.0 (±3.2)	15.0 (±2.5)	19.3 (±4.7)	16.8 (±3.3)	20.8 (±4.5)	23.3 (±4.7)	23.9 (±3.3)	25.9 (±3.5)
SEX									
FEMALE	11.3 (±3.0)	13.3 (±2.6)	13.6 (±3.5)	15.0 (±4.0)	14.5 (±3.3)	17.9 (±4.0)	21.6 (±4.8)	21.7 (±4.3)	23.8 (±4.5)
MALE	14.0 (±3.4)	20.9 (±5.0)	16.4 (±2.9)	23.7 (±6.8)	19.0 (±3.8)	23.7 (±5.8)	24.8 (±5.3)	26.1 (±3.5)	27.9 (±3.8)
RACE									
WHITE	11.8 (±4.0)	17.2 (±4.1)	16.2 (±3.0)	17.3 (±5.0)	18.0 (±4.3)	25.2 (±5.5)	22.2 (±6.5)	25.4 (±4.6)	24.4 (±5.3)
BLACK	13.0 (±3.7)	16.5 (±4.2)	13.8 (±4.8)	21.8 (±7.7)	15.1 (±3.7)	16.5 (±5.0)	24.3 (±5.2)	22.3 (±4.5)	26.7 (±4.4)
GRADE									
6	7.1 (±3.2)	15.2 (±4.9)	8.0 (±3.0)	13.5 (±6.2)	11.6 (±3.9)	12.0 (±5.1)	13.1 (±6.3)	14.9 (±5.2)	18.2 (±4.0)
7	11.8 (±3.9)	14.7 (±3.7)	14.2 (±2.6)	20.5 (±9.7)	14.8 (±3.2)	20.8 (±5.2)	23.0 (±4.4)	23.8 (±5.1)	24.9 (±6.1)
8	19.5 (±4.1)	21.0 (±4.5)	22.1 (±4.7)	24.1 (±6.1)	24.1 (±5.2)	30.2 (±7.4)	32.0 (±9.2)	33.1 (±6.4)	34.3 (±5.4)

	2008	2006	2004	2003	2002	2000	1999	1998
TOTAL	34.8 (±4.8)	33.3 (±5.1)	38.9 (±3.9)	36.3 (±2.5)	40.9 (±3.5)	53.4 (±3.3)	57.2 (±4.2)	54.3 (±4.1)
SEX								
FEMALE	29.9 (±5.6)	32.3 (±6.2)	36.4 (±3.9)	33.6 (±2.7)	38.5 (±4.6)	48.6 (±3.4)	53.7 (±5.1)	51.2 (±5.3)
MALE	39.4 (±4.8)	34.4 (±6.1)	41.5 (±5.0)	39.0 (±2.9)	43.5 (±3.2)	58.1 (±4.8)	60.3 (±4.9)	57.3 (±4.3)
RACE								
WHITE	31.9 (±6.0)	30.4 (±6.5)	36.2 (±5.8)	33.3 (±3.0)	39.4 (±3.6)	50.1 (±4.6)	55.7 (±3.2)	52.0 (±6.6)
BLACK	37.0 (±5.0)	36.2 (±6.2)	41.5 (±2.9)	39.3 (±2.7)	41.8 (±5.8)	56.7 (±7.9)	58.3 (±7.6)	56.3 (±7.1)
GRADE								
6	22.5 (±6.7)	19.3 (±4.7)	29.1 (±5.5)	25.5 (±3.1)	32.8 (±4.9)	40.5 (±7.3)	45.1 (±5.2)	41.8 (±4.9)
7	36.6 (±5.6)	36.3 (±6.9)	41.5 (±5.3)	37.0 (±3.5)	46.9 (±5.1)	57.9 (±5.8)	59.4 (±5.7)	55.0 (±7.1)
8	45.5 (±6.8)	43.2 (±7.3)	45.9 (±5.1)	46.8 (±2.6)	50.7 (±4.5)	61.4 (±5.4)	66.3 (±6.2)	64.0 (±5.6)



Mississippi Youth Tobacco Use {1998-2017} Frequent Cigarette Smoking - Public High School

	2017	2016	2015	2014	2013	2012	2011	2010	2009
TOTAL	1.7 (±0.7)	2.7 (±1.0)	2.9 (±1.2)	4.2 (±1.8)	4.3 (±1.4)	6.8 (±2.2)	6.5 (±1.8)	7.0 (±1.6)	7.8 (±1.9)
SEX									
FEMALE	1.8 (±0.9)	2.9 (±1.6)	1.8 (±1.2)	3.8 (±2.1)	4.5 (±1.7)	6.2 (±2.8)	4.5 (±1.8)	6.6 (±1.9)	7.4 (±2.5)
MALE	1.8 (±0.9)	2.4 (±1.1)	4.1 (±1.7)	4.5 (±2.0)	4.1 (±1.5)	7.3 (±2.6)	8.6 (±2.4)	7.6 (±1.8)	8.2 (±2.5)
RACE									
WHITE	2.6 (±1.0)	4.8 (±2.0)	4.4 (±2.0)	7.0 (±3.5)	7.5 (±1.7)	10.9 (±4.3)	11.0 (±2.8)	11.8 (±2.8)	12.9 (±2.8)
BLACK	0.8 (±0.6)	0.8 (±0.6)	1.0 (±0.8)	1.3 (±0.8)	1.3 (±1.0)	3.2 (±1.1)	2.4 (±1.3)	2.5 (±1.2)	2.5 (±1.5)
GRADE									
9	1.0 (±1.0)	0.9 (±0.7)	1.4 (±1.0)	2.9 (±2.1)	1.5 (±1.7)	2.7 (±1.5)	3.4 (±1.9)	4.7 (±2.6)	5.4 (±2.1)
10	1.3 (±1.0)	1.4 (±1.0)	3.3 (±2.3)	2.8 (±1.5)	4.4 (±2.1)	7.1 (±3.5)	4.9 (±2.8)	6.2 (±2.5)	7.6 (±3.1)
11	1.1 (±1.0)	2.8 (±2.1)	2.4 (±1.9)	4.6 (±2.3)	4.7 (±2.6)	6.3 (±3.2)	6.2 (±2.7)	7.5 (±3.1)	8.2 (±3.6)
12	3.4 (±1.6)	6.1 (±2.7)	4.9 (±2.7)	7.3 (±5.2)	7.4 (±3.1)	12.5 (±7.3)	12.9 (±4.0)	10.9 (±5.0)	11.3 (±3.5)

	2008	2006	2004	2003	2002	2000	1999	1998
TOTAL	7.8 (±2.6)	7.6 (±1.9)	9.4 (±1.7)	10.1 (±1.0)	9.0 (±1.6)	13.8 (±3.0)	16.6 (±3.0)	14.3 (±3.0)
SEX								
FEMALE	6.9 (±2.8)	5.5 (±2.9)	7.7 (±2.1)	9.1 (±1.2)	7.8 (±1.9)	12.5 (±3.6)	16.9 (±4.2)	11.6 (±2.3)
MALE	9.0 (±3.3)	9.8 (±2.2)	11.1 (±2.5)	11.0 (±1.4)	10.4 (±2.5)	15.1 (±3.3)	16.1 (±3.6)	17.3 (±3.3)
RACE								
WHITE	13.2 (±4.4)	10.9 (±3.7)	13.9 (±2.8)	14.9 (±1.7)	13.9 (±2.2)	21.6 (±4.4)	24.8 (±4.3)	23.2 (±4.5)
BLACK	2.4 (±1.8)	4.3 (±2.2)	4.7 (±1.5)	4.1 (±0.8)	4.4 (±1.7)	4.3 (±2.1)	4.1 (±1.2)	3.4 (±2.2)
GRADE								
9	5.4 (±2.7)	7.1 (±2.1)	7.8 (±2.1)	7.5 (±1.5)	7.7 (±2.7)	11.1 (±5.1)	12.0 (±3.8)	8.3 (±2.7)
10	6.2 (±3.3)	5.5 (±4.5)	9.5 (±2.8)	8.6 (±1.3)	7.8 (±1.9)	14.3 (±4.8)	14.8 (±4.0)	16.7 (±5.0)
11	6.6 (±5.1)	7.0 (±2.7)	9.5 (±2.9)	11.2 (±1.9)	7.9 (±3.3)	17.0 (±6.3)	20.2 (±9.0)	17.9 (±5.6)
12	14.9 (±4.5)	12.2 (±3.4)	12.2 (±4.3)	14.5 (±2.1)	12.8 (±3.8)	13.9 (±5.9)	21.8 (±7.0)	16.1 (±5.4)

Mississippi Youth Tobacco Use {1998-2017} Frequent Cigarette Smoking - Public Middle School

	2017	2016	2015	2014	2013	2012	2011	2010	2009
TOTAL	0.3 (±0.3)	0.4 (±0.3)	0.3 (±0.2)	0.6 (±0.5)	0.7 (±0.4)	0.7 (±0.4)	1.3 (±0.8)	0.9 (±0.4)	1.9 (±0.8)
SEX									
FEMALE	0.2 (±0.2)	0.2 (±0.3)	0.1 (±0.2)	0.4 (±0.5)	0.4 (±0.4)	1.0 (±0.7)	0.4 (±0.4)	0.4 (±0.3)	1.8 (±0.8)
MALE	0.5 (±0.5)	0.7 (±0.6)	0.5 (±0.5)	0.8 (±0.8)	1.0 (±0.7)	0.3 (±0.4)	2.0 (±1.6)	1.4 (±0.8)	2.0 (±1.2)
RACE									
WHITE	0.6 (±0.6)	0.6 (±0.6)	0.6 (±0.4)	1.1 (±1.0)	1.2 (±0.9)	1.0 (±0.8)	1.3 (±0.8)	1.3 (±0.8)	3.2 (±1.7)
BLACK	0.0 (±0.0)	0.2 (±0.3)	0.0 (±0.0)	0.0 (±0.0)	0.2 (±0.4)	0.1 (±0.2)	1.0 (±1.3)	0.3 (±0.4)	0.7 (±0.8)
GRADE									
6	0.0 (±0.0)	0.4 (±0.5)	0.0 (±0.0)	0.0 (±0.0)	0.5 (±0.7)	0.4 (±0.7)	0.8 (±0.8)	0.6 (±0.6)	0.7 (±0.6)
7	0.4 (±0.6)	0.2 (±0.4)	0.4 (±0.3)	0.6 (±0.7)	0.5 (±0.6)	0.4 (±0.4)	1.3 (±0.7)	0.7 (±0.6)	2.1 (±1.1)
8	0.5 (±0.6)	0.7 (±0.8)	0.6 (±0.6)	1.2 (±0.9)	1.1 (±1.1)	1.3 (±0.9)	0.8 (±0.5)	1.4 (±1.0)	3.0 (±1.6)

	2008	2006	2004	2003	2002	2000	1999	1998
TOTAL	1.5 (±0.7)	1.9 (±0.9)	3.0 (±0.7)	2.3 (±0.4)	2.7 (±0.9)	3.8 (±1.1)	4.8 (±1.2)	5.2 (±2.2)
SEX								
FEMALE	0.6 (±0.5)	1.9 (±1.0)	2.6 (±1.2)	1.6 (±0.5)	2.2 (±0.8)	3.6 (±1.2)	3.6 (±1.0)	3.6 (±2.7)
MALE	2.4 (±1.1)	1.9 (±1.2)	3.2 (±0.8)	2.9 (±0.6)	3.2 (±1.2)	4.1 (±1.3)	5.9 (±1.9)	6.8 (±3.1)
RACE								
WHITE	2.1 (±1.2)	3.5 (±1.4)	4.1 (±1.6)	2.8 (±0.7)	3.8 (±1.6)	5.9 (±1.9)	6.9 (±1.6)	6.4 (±3.5)
BLACK	0.8 (±0.6)	0.3 (±0.4)	1.8 (±0.5)	1.6 (±0.5)	1.4 (±0.8)	1.7 (±0.9)	1.7 (±1.2)	2.6 (±1.8)
GRADE								
6	0.6 (±0.6)	0.7 (±0.7)	1.1 (±0.9)	1.3 (±0.4)	1.3 (±0.8)	2.8 (±2.1)	2.7 (±1.5)	1.2 (±0.6)
7	1.2 (±0.8)	1.2 (±0.8)	3.0 (±1.2)	1.8 (±0.4)	3.4 (±1.0)	4.0 (±1.8)	4.1 (±1.9)	5.1 (±3.2)
8	2.7 (±1.6)	3.5 (±1.9)	4.7 (±2.0)	3.8 (±1.0)	5.2 (±2.2)	4.8 (±1.5)	7.5 (±2.1)	7.1 (±3.1)



Mississippi Youth Tobacco Use {1998-2017} Current Smokeless Tobacco Use - Public High School

	2017	2016	2015	2014	2013	2012	2011	2010	2009
TOTAL	6.6 (±1.5)	7.1 (±1.7)	7.7 (±2.2)	8.0 (±1.8)	8.0 (±2.1)	9.6 (±2.9)	9.9 (±2.3)	9.6 (±2.9)	9.8 (±2.3)
SEX									
FEMALE	3.1 (±1.7)	1.6 (±1.0)	1.5 (±1.1)	2.0 (±1.1)	2.4 (±1.3)	1.7 (±0.8)	2.0 (±1.0)	2.7 (±1.3)	3.4 (±1.4)
MALE	10.2 (±2.6)	12.5 (±2.8)	13.9 (±3.7)	13.9 (±3.3)	13.6 (±3.3)	17.6 (±5.3)	18.0 (±4.6)	16.6 (±5.2)	16.7 (±4.0)
RACE									
WHITE	10.1 (±1.8)	12.6 (±2.5)	13.5 (±2.8)	13.3 (±2.6)	14.5 (±3.1)	16.8 (±3.4)	17.3 (±3.5)	15.9 (±5.0)	16.7 (±3.3)
BLACK	3.1 (±1.7)	1.7 (±1.0)	1.7 (±1.6)	2.7 (±1.1)	2.2 (±1.3)	3.0 (±1.3)	3.2 (±1.2)	3.8 (±1.2)	2.9 (±1.6)
GRADE									
9	5.5 (±1.7)	6.2 (±1.5)	6.4 (±2.4)	6.0 (±2.5)	7.9 (±3.9)	7.0 (±2.4)	9.6 (±4.0)	8.1 (±3.0)	10.0 (±3.8)
10	6.4 (±2.1)	5.7 (±2.4)	9.4 (±4.5)	5.9 (±3.4)	8.6 (±3.4)	13.3 (±6.6)	7.8 (±2.6)	10.4 (±3.7)	11.4 (±3.3)
11	5.7 (±3.7)	8.3 (±3.3)	4.6 (±3.1)	10.5 (±3.0)	6.5 (±3.5)	6.4 (±2.3)	10.8 (±4.8)	12.0 (±4.7)	7.4 (±2.8)
12	8.9 (±3.1)	8.2 (±4.1)	10.1 (±5.8)	10.6 (±5.6)	8.9 (±3.8)	12.1 (±7.6)	12.0 (±3.0)	8.1 (±4.6)	9.9 (±3.4)

	2008	2006	2004	2003	2002	2000	1999	1998
TOTAL	13.8 (±3.5)	9.7 (±2.3)	11.8 (±2.3)	10.4 (±1.3)	9.6 (±1.7)	9.1 (±2.3)	9.6 (±1.7)	9.4 (±2.8)
SEX								
FEMALE	7.8 (±3.5)	5.3 (±2.7)	4.5 (±1.2)	2.8 (±0.8)	4.2 (±1.5)	1.3 (±0.8)	1.7 (±1.7)	1.3 (±1.7)
MALE	20.1 (±4.8)	13.9 (±6.7)	18.4 (±4.3)	18.2 (±2.3)	15.1 (±2.9)	16.9 (±4.3)	18.2 (±3.1)	18.1 (±4.3)
RACE								
WHITE	19.1 (±4.1)	13.8 (±4.0)	17.3 (±2.9)	15.1 (±2.0)	14.5 (±1.6)	14.6 (±3.7)	13.5 (±2.4)	16.0 (±4.0)
BLACK	7.8 (±5.8)	5.4 (±1.9)	5.9 (±1.6)	4.6 (±1.1)	4.4 (±1.5)	2.2 (±0.9)	2.9 (±1.2)	1.5 (±1.5)
GRADE								
9	12.5 (±4.4)	8.8 (±8.0)	10.8 (±3.3)	10.0 (±1.5)	8.4 (±2.3)	8.8 (±3.5)	8.8 (±2.4)	9.1 (±3.5)
10	13.3 (±5.3)	14.4 (±4.0)	12.0 (±2.7)	11.9 (±2.0)	9.0 (±2.5)	7.8 (±3.5)	8.1 (±2.4)	11.7 (±4.5)
11	12.4 (±7.5)	5.9 (±3.2)	11.7 (±4.3)	10.0 (±2.2)	12.5 (±3.0)	8.4 (±4.4)	9.8 (±2.9)	6.8 (±5.1)
12	16.6 (±5.5)	8.9 (±3.7)	13.0 (±5.2)	9.8 (±1.9)	8.5 (±3.1)	11.6 (±5.3)	12.2 (±5.7)	8.6 (±2.8)

Mississippi Youth Tobacco Use {1998-2017} Current Smokeless Tobacco Use - Public Middle School

	2017	2016	2015	2014	2013	2012	2011	2010	2009
TOTAL	3.0 (±1.7)	4.0 (±1.4)	3.6 (±1.1)	4.5 (±1.8)	4.4 (±1.8)	4.8 (±1.9)	5.5 (±1.5)	6.4 (±2.1)	5.3 (±1.9)
SEX									
FEMALE	1.5 (±0.9)	1.4 (±1.1)	1.1 (±0.7)	1.3 (±0.9)	1.0 (±0.8)	1.5 (±0.9)	1.8 (±0.8)	2.5 (±1.4)	1.9 (±1.3)
MALE	4.6 (±2.7)	6.4 (±2.6)	5.9 (±2.1)	7.7 (±3.3)	7.8 (±3.1)	8.1 (±3.1)	9.0 (±3.0)	10.2 (±3.3)	8.6 (±3.0)
RACE									
WHITE	4.9 (±2.6)	6.1 (±2.2)	5.4 (±1.6)	6.2 (±3.4)	8.3 (±3.1)	9.0 (±2.7)	8.7 (±2.7)	10.8 (±2.5)	9.3 (±3.0)
BLACK	1.4 (±1.1)	1.8 (±1.4)	1.7 (±1.0)	3.0 (±1.7)	0.8 (±0.8)	1.4 (±1.0)	2.0 (±0.8)	2.4 (±1.4)	1.6 (±0.9)
GRADE									
6	1.4 (±1.0)	2.8 (±1.8)	1.9 (±1.2)	2.6 (±2.3)	3.0 (±1.7)	4.0 (±3.7)	3.9 (±2.7)	5.3 (±4.1)	4.1 (±2.6)
7	2.3 (±2.1)	3.4 (±2.0)	3.9 (±1.4)	5.7 (±3.4)	3.6 (±2.3)	3.3 (±2.0)	5.7 (±2.5)	7.2 (±2.7)	4.6 (±2.2)
8	5.5 (±3.0)	5.6 (±2.2)	4.7 (±2.4)	5.4 (±3.2)	6.8 (±3.4)	7.4 (±3.1)	6.7 (±2.8)	6.8 (±2.5)	7.3 (±4.2)

	2008	2006	2004	2003	2002	2000	1999	1998
TOTAL	7.2 (±1.6)	7.7 (±2.2)	8.2 (±1.3)	6.4 (±1.0)	8.7 (±1.0)	7.5 (±2.0)	9.1 (±1.7)	9.6 (±2.1)
SEX								
FEMALE	1.6 (±0.7)	4.1 (±1.5)	5.1 (±1.0)	2.8 (±0.5)	4.6 (±0.9)	2.8 (±1.3)	3.5 (±1.1)	4.2 (±1.8)
MALE	12.3 (±2.7)	11.1 (±3.7)	11.6 (±2.4)	9.8 (±1.9)	12.6 (±2.1)	11.8 (±4.0)	14.5 (±3.0)	14.8 (±3.9)
RACE								
WHITE	10.4 (±2.1)	12.1 (±2.8)	10.6 (±2.8)	8.3 (±1.9)	11.2 (±2.1)	12.0 (±3.5)	11.6 (±2.4)	12.7 (±3.1)
BLACK	3.9 (±1.7)	3.7 (±1.9)	6.0 (±1.0)	3.8 (±0.6)	4.7 (±1.2)	2.5 (±1.0)	6.5 (±2.2)	4.8 (±1.9)
GRADE								
6	4.7 (±2.4)	5.3 (±2.2)	5.7 (±1.4)	5.4 (±1.0)	8.7 (±1.9)	5.5 (±2.2)	9.5 (±3.2)	6.5 (±2.5)
7	7.5 (±3.0)	6.3 (±2.9)	8.2 (±1.9)	5.8 (±1.0)	7.6 (±1.6)	9.5 (±4.1)	7.6 (±3.3)	8.7 (±3.8)
8	9.5 (±3.3)	10.8 (±3.4)	10.8 (±3.4)	7.8 (±2.0)	11.0 (±3.0)	7.4 (±2.7)	10.1 (±2.5)	12.0 (±4.2)



Mississippi Youth Tobacco Use {1998-2017} Ever Tried Smokeless Tobacco - Public High School

	2017	2016	2015	2014	2013	2012	2011	2010	2009
TOTAL	15.0 (±3.2)	14.2 (±2.5)	16.2 (±4.0)	16.0 (±3.0)	15.8 (±3.8)	17.8 (±3.8)	19.5 (±4.1)	20.2 (±3.6)	18.6 (±3.9)
SEX									
FEMALE	9.1 (±2.8)	5.9 (±2.5)	5.1 (±2.3)	6.7 (±1.9)	6.4 (±2.0)	6.6 (±1.6)	7.5 (±1.9)	8.4 (±2.7)	9.5 (±2.8)
MALE	21.2 (±5.5)	22.3 (±3.4)	27.7 (±5.6)	25.5 (±5.0)	25.3 (±5.5)	29.3 (±6.2)	32.0 (±7.5)	32.3 (±5.8)	28.3 (±6.0)
RACE									
WHITE	22.2 (±2.6)	22.7 (±3.7)	28.1 (±4.5)	27.5 (±3.4)	27.8 (±5.3)	29.4 (±3.8)	33.1 (±5.1)	33.5 (±4.3)	30.7 (±4.2)
BLACK	7.8 (±2.8)	6.1 (±2.0)	4.6 (±2.2)	5.3 (±1.6)	5.1 (±2.2)	7.0 (±1.9)	7.4 (±2.5)	8.3 (±2.5)	6.6 (±2.6)
GRADE									
9	11.3 (±2.6)	12.1 (±2.4)	13.7 (±4.6)	12.3 (±4.3)	14.4 (±6.7)	13.9 (±3.9)	18.7 (±6.0)	15.2 (±4.9)	17.8 (±5.1)
10	14.7 (±3.2)	14.1 (±4.0)	18.4 (±5.3)	15.5 (±5.4)	16.3 (±6.3)	21.8 (±7.9)	16.7 (±6.1)	22.7 (±5.3)	18.9 (±5.4)
11	15.4 (±6.8)	13.6 (±3.7)	13.3 (±6.4)	18.6 (±5.8)	14.6 (±5.4)	16.8 (±4.7)	20.7 (±7.5)	20.9 (±4.6)	17.6 (±5.4)
12	19.5 (±5.8)	17.0 (±6.9)	19.7 (±8.5)	18.9 (±5.5)	18.4 (±5.5)	19.3 (±8.2)	23.1 (±5.5)	23.4 (±9.1)	20.3 (±6.3)

	2008	2006	2004	2003	2002	2000	1999	1998
TOTAL	22.8 (±3.3)	19.1 (±4.9)	22.6 (±3.1)	22.2 (±1.7)	20.7 (±2.6)	25.0 (±4.2)	24.3 (±4.5)	26.2 (±4.2)
SEX								
FEMALE	12.6 (±2.5)	7.8 (±4.1)	9.5 (±2.0)	10.0 (±1.1)	10.2 (±1.5)	10.8 (±2.6)	7.6 (±3.3)	11.4 (±3.7)
MALE	34.0 (±6.1)	30.7 (±7.0)	35.3 (±5.2)	35.3 (±3.1)	32.4 (±5.2)	40.2 (±6.9)	42.3 (±5.8)	42.2 (±6.0)
RACE								
WHITE	32.1 (±4.4)	31.5 (±4.2)	32.8 (±3.4)	31.1 (±2.1)	30.7 (±3.1)	36.0 (±5.6)	35.4 (±5.5)	38.5 (±5.8)
BLACK	13.1 (±3.6)	7.3 (±4.9)	12.0 (±2.2)	12.0 (±1.5)	11.0 (±1.8)	12.8 (±2.4)	6.7 (±2.7)	11.6 (±2.9)
GRADE								
9	23.3 (±6.5)	20.7 (±5.3)	20.4 (±4.0)	21.5 (±2.1)	19.4 (±4.1)	23.7 (±5.4)	25.3 (±5.4)	25.7 (±5.4)
10	25.3 (±7.2)	19.3 (±9.6)	21.3 (±3.5)	22.4 (±2.0)	21.8 (±4.0)	21.9 (±6.4)	20.5 (±5.5)	27.0 (±6.9)
11	18.4 (±6.7)	17.8 (±5.8)	24.8 (±6.3)	23.0 (±3.1)	20.7 (±3.9)	26.7 (±6.4)	25.3 (±9.7)	25.4 (±7.6)
12	23.2 (±5.2)	18.1 (±5.4)	25.1 (±5.7)	21.8 (±3.2)	21.2 (±4.6)	28.3 (±7.4)	25.3 (±6.2)	25.8 (±5.4)

Mississippi Youth Tobacco Use {1998-2017} Ever Tried Smokeless Tobacco - Public Middle School

	2017	2016	2015	2014	2013	2012	2011	2010	2009
TOTAL	8.4 (±2.5)	7.9 (±2.1)	8.6 (±2.3)	8.8 (±2.4)	9.5 (±2.8)	11.4 (±3.6)	11.4 (±2.4)	11.1 (±3.3)	11.8 (±2.8)
SEX									
FEMALE	5.2 (±2.5)	3.5 (±1.4)	4.9 (±1.7)	4.1 (±1.7)	4.3 (±2.0)	5.5 (±2.2)	5.9 (±1.6)	5.1 (±2.4)	6.3 (±1.9)
MALE	11.4 (±2.9)	12.1 (±3.8)	12.1 (±3.8)	13.5 (±4.3)	14.4 (±4.1)	17.0 (±5.5)	16.6 (±4.3)	16.8 (±4.9)	17.1 (±4.6)
RACE									
WHITE	11.8 (±4.0)	12.8 (±3.3)	14.8 (±2.7)	12.6 (±4.2)	15.9 (±4.2)	21.3 (±4.8)	17.5 (±4.1)	18.4 (±3.7)	19.3 (±4.0)
BLACK	5.0 (±2.2)	2.9 (±1.1)	2.4 (±1.4)	5.2 (±2.1)	3.6 (±1.7)	2.4 (±1.2)	5.6 (±2.1)	4.2 (±2.1)	4.9 (±1.8)
GRADE									
6	4.7 (±2.3)	5.0 (±2.9)	4.9 (±2.5)	5.9 (±4.0)	8.8 (±3.8)	8.1 (±5.9)	9.4 (±4.3)	8.2 (±4.2)	8.0 (±3.8)
7	8.0 (±4.1)	7.4 (±2.6)	9.6 (±2.7)	9.5 (±4.1)	6.9 (±3.4)	10.3 (±5.5)	10.9 (±3.6)	12.8 (±4.5)	11.6 (±3.7)
8	12.6 (4.6)	11.1 (±3.8)	11.0 (±4.8)	11.1 (±4.5)	12.8 (±4.4)	15.8 (±4.6)	13.4 (±5.0)	12.1 (±5.0)	15.9 (±5.6)

	2008	2006	2004	2003	2002	2000	1999	1998
TOTAL	14.4 (±1.7)	15.5 (±3.8)	14.7 (±2.7)	14.1 (±1.7)	17.8 (±1.4)	19.7 (±2.7)	18.8 (±2.7)	18.1 (±3.1)
SEX								
FEMALE	6.9 (±1.4)	9.2 (±2.9)	9.6 (±2.2)	8.1 (±0.9)	9.6 (±1.6)	9.7 (±1.8)	9.6 (±2.3)	7.2 (±2.0)
MALE	21.6 (±3.3)	21.3 (±5.9)	20.2 (±3.7)	20.0 (±3.0)	26.2 (±2.8)	29.4 (±4.7)	27.6 (±4.3)	28.5 (±5.5)
RACE								
WHITE	20.4 (±2.5)	23.9 (±3.9)	19.7 (±4.3)	17.8 (±3.2)	21.8 (±2.8)	26.7 (±4.2)	24.2 (±3.3)	24.0 (±3.1)
BLACK	8.6 (±2.3)	7.9 (±3.0)	10.0 (±2.1)	10.1 (±0.9)	12.4 (±2.0)	11.7 (±2.4)	13.8 (±3.6)	10.5 (±3.2)
GRADE								
6	10.2 (±2.9)	12.1 (±3.3)	10.4 (±2.8)	12.1 (±1.8)	17.3 (±3.1)	13.7 (±3.2)	16.6 (±4.2)	12.9 (±4.9)
7	14.5 (±3.5)	12.6 (±5.3)	14.4 (±3.6)	13.4 (±2.2)	17.3 (±2.6)	23.3 (±5.0)	19.1 (±5.1)	19.0 (±5.5)
8	18.9 (±2.6)	21.2 (±6.1)	19.3 (±4.1)	16.8 (±3.0)	20.2 (±4.5)	22.2 (±4.1)	20.5 (±4.1)	20.7 (±5.3)



Mississippi Youth Tobacco Use {1998-2017} Frequent Smokeless Tobacco Use - Public High School

	2017	2016	2015	2014	2013	2012	2011	2010	2009
TOTAL	2.8 (±1.0)	3.4 (±1.0)	3.6 (±1.2)	3.7 (±1.5)	3.5 (±1.2)	5.1 (±2.6)	4.6 (±1.6)	4.5 (±2.3)	4.3 (±1.5)
SEX									
FEMALE	1.2 (±0.8)	0.1 (±0.2)	0.2 (±0.3)	0.2 (±0.2)	0.2 (±0.3)	0.3 (±0.4)	0.3 (±0.6)	0.5 (±0.5)	0.5 (±0.4)
MALE	4.6 (±1.8)	6.5 (±1.9)	6.9 (±2.3)	7.2 (±3.0)	6.9 (±2.5)	9.9 (±5.0)	9.0 (±3.0)	8.6 (±4.4)	8.4 (±3.1)
RACE									
WHITE	4.2 (±1.1)	6.5 (±2.1)	6.6 (±1.6)	6.9 (±2.4)	6.8 (±2.4)	9.3 (±3.7)	8.9 (±2.6)	8.0 (±3.8)	7.7 (±2.6)
BLACK	1.2 (±1.1)	0.4 (±0.5)	0.4 (±0.5)	0.5 (±0.5)	0.5 (±0.5)	1.3 (±1.0)	0.8 (±0.8)	1.4 (±0.7)	0.8 (±1.0)
GRADE									
9	2.0 (±1.5)	2.3 (±1.2)	2.5 (±1.8)	1.3 (±1.0)	3.3 (±2.7)	2.0 (±1.1)	3.4 (±2.3)	3.3 (±2.2)	3.8 (±2.1)
10	2.8 (±1.8)	2.9 (±1.7)	3.4 (±2.3)	1.8 (±1.4)	3.8 (±1.8)	8.1 (±5.7)	3.8 (±2.2)	3.3 (±2.5)	4.9 (±2.2)
11	1.7 (±1.5)	3.8 (±1.8)	2.3 (±1.8)	5.3 (±2.8)	2.9 (±1.6)	3.7 (±1.9)	6.1 (±3.3)	5.9 (±3.8)	4.3 (±2.2)
12	4.8 (±1.8)	4.9 (±2.3)	6.2 (±3.8)	7.6 (±5.1)	4.1 (±2.5)	7.0 (±7.5)	5.7 (±2.5)	6.1 (±4.2)	4.0 (±2.5)

	2008	2006	2004	2003	2002	2000	1999	1998
TOTAL	4.7 (±1.5)	2.8 (±1.4)	4.2 (±1.3)	3.9 (±0.7)	3.3 (±1.0)	3.9 (±1.3)	3.2 (±1.0)	3.7 (±1.8)
SEX								
FEMALE	1.2 (±0.8)	0.3 (±0.3)	0.5 (±0.3)	0.5 (±0.3)	0.9 (±0.5)	0.3 (±0.4)	0.3 (±0.4)	0.4 (±0.5)
MALE	8.6 (±2.9)	5.5 (±2.9)	7.6 (±2.7)	7.4 (±1.2)	6.1 (±1.8)	7.6 (±2.5)	6.4 (±1.8)	7.3 (±3.3)
RACE								
WHITE	7.8 (±2.6)	5.3 (±1.9)	7.3 (±2.3)	6.6 (±1.1)	6.3 (±1.5)	6.7 (±2.0)	5.1 (±1.7)	6.4 (±3.1)
BLACK	1.8 (±1.7)	0.2 (±0.4)	1.1 (±0.7)	0.8 (±0.4)	0.6 (±0.5)	0.5 (±0.6)	0.6 (±0.7)	0.2 (±1.0)
GRADE								
9	4.4 (±2.0)	2.1 (±2.2)	2.9 (±1.8)	2.9 (±0.8)	2.7 (±1.1)	3.8 (±2.2)	1.2 (±1.0)	2.2 (±1.6)
10	4.5 (±3.2)	2.7 (±2.0)	3.0 (±1.5)	4.4 (±1.0)	3.2 (±1.5)	3.7 (±2.3)	3.1 (±1.4)	5.5 (±4.5)
11	4.4 (±4.0)	2.2 (±2.0)	5.7 (±2.8)	4.3 (±1.4)	4.2 (±1.9)	3.3 (±3.0)	4.4 (±3.2)	3.7 (±3.1)
12	5.8 (±3.0)	4.7 (±2.5)	6.4 (±2.6)	4.4 (±1.4)	3.4 (±1.8)	5.1 (±2.8)	4.8 (±2.6)	3.5 (±2.3)

Mississippi Youth Tobacco Use {1998-2017} Frequent Smokeless Tobacco Use - Public Middle School

	2017	2016	2015	2014	2013	2012	2011	2010	2009
TOTAL	0.8 (±0.7)	0.9 (±0.4)	0.9 (±0.5)	1.0 (±0.9)	1.5 (±1.0)	0.8 (±0.5)	1.5 (±0.8)	1.1 (±0.4)	1.0 (±0.8)
SEX									
FEMALE	0.3 (±0.4)	0.3 (±0.3)	0.1 (±0.1)	0.0 (±0.0)	0.0 (±0.0)	0.2 (±0.2)	0.3 (±0.4)	0.1 (±0.2)	0.2 (±0.3)
MALE	1.3 (±1.3)	1.3 (±0.7)	1.8 (±0.9)	2.0 (±1.7)	3.0 (±2.0)	1.4 (±0.9)	2.6 (±1.6)	2.1 (±0.8)	1.8 (±1.5)
RACE									
WHITE	1.6 (±1.4)	1.4 (±0.7)	1.9 (±1.0)	1.9 (±1.9)	3.1 (±2.0)	1.6 (±0.9)	2.3 (±1.7)	1.9 (±0.9)	2.0 (±1.6)
BLACK	0.0 (±0.0)	0.1 (±0.2)	0.0 (±0.0)	0.1 (±0.3)	0.1 (±0.2)	0.1 (±0.2)	0.3 (±0.3)	0.5 (±0.5)	0.1 (±0.2)
GRADE									
6	0.2 (±0.3)	0.2 (±0.3)	0.1 (±0.1)	0.2 (±0.4)	0.6 (±0.9)	0.0 (±0.0)	0.9 (±0.9)	0.3 (±0.5)	0.1 (±0.2)
7	1.3 (±1.4)	1.3 (±0.9)	1.1 (±0.9)	0.8 (±0.7)	0.8 (±0.8)	0.4 (±0.5)	1.7 (±1.3)	1.2 (±0.9)	1.0 (±0.8)
8	0.9 (±1.0)	1.0 (±0.7)	1.6 (±1.2)	2.1 (±2.2)	3.2 (±2.3)	2.0 (±1.1)	1.6 (±1.4)	1.9 (±1.0)	2.0 (±2.1)

	2008	2006	2004	2003	2002	2000	1999	1998
TOTAL	1.7 (±0.8)	2.2 (±1.2)	1.3 (±0.5)	1.2 (±0.5)	2.1 (±0.6)	1.5 (±0.9)	1.3 (±0.5)	2.2 (±1.1)
SEX								
FEMALE	0.6 (±0.4)	0.3 (±0.3)	0.3 (±0.2)	0.4 (±0.2)	0.8 (±0.5)	0.2 (±0.5)	0.0 (±0.0)	0.9 (±0.9)
MALE	2.8 (±1.5)	4.1 (±2.2)	2.3 (±1.0)	2.1 (±0.8)	3.3 (±1.0)	2.6 (±1.8)	2.5 (±1.0)	3.5 (±2.1)
RACE								
WHITE	2.8 (±1.4)	4.2 (±2.0)	1.7 (±1.0)	1.8 (±0.7)	2.5 (±0.9)	2.6 (±1.7)	2.1 (±0.7)	2.4 (±2.2)
BLACK	0.4 (±0.)	0.5 (±0.6)	0.9 (±0.6)	0.5 (±0.2)	1.4 (±0.8)	0.0 (±0.0)	0.3 (±0.6)	1.0 (±1.1)
GRADE								
6	1.0 (±0.8)	1.6 (±1.3)	0.3 (±0.4)	0.8 (±0.4)	1.0 (±0.6)	1.2 (±2.1)	1.5 (±1.1)	0.5 (±0.4)
7	1.5 (±1.0)	1.2 (±1.0)	1.7 (±1.0)	1.2 (±0.5)	2.1 (±0.8)	1.3 (±1.1)	1.0 (±0.9)	1.7 (±1.5)
8	2.6 (±1.7)	3.7 (±2.7)	1.7 (±1.1)	1.7 (±1.1)	3.7 (±1.2)	2.0 (±1.5)	1.3 (±0.6)	3.0 (±1.8)



Mississippi Youth Tobacco Use {1998-2017} Current Cigar Smoking - Public High School

APPENDIX {CIGARS}

	2017	2016	2015	2014	2013	2012	2011	2010	2009
TOTAL	8.4 (±1.7)	9.2 (±1.9)	8.7 (±1.4)	10.3 (±1.9)	10.9 (±1.9)	11.9 (±2.0)	14.2 (±2.3)	13.8 (±2.0)	13.8 (±2.2)
SEX									
FEMALE	7.5 (±2.6)	7.3 (±2.1)	5.5 (±1.8)	7.6 (±2.6)	8.0 (±2.2)	9.3 (±2.4)	8.7 (±1.9)	11.0 (±2.0)	9.3 (±2.9)
MALE	9.3 (±2.3)	11.2 (±2.4)	12.2 (±2.2)	12.6 (±2.5)	13.8 (±3.3)	14.4 (±3.6)	19.8 (±3.1)	16.9 (±3.2)	18.3 (±3.1)
RACE									
WHITE	9.4 (±2.2)	10.0 (±2.3)	10.0 (±2.1)	9.5 (±2.0)	12.3 (±2.5)	10.7 (±2.7)	15.1 (±2.7)	15.5 (±2.7)	14.9 (±3.0)
BLACK	6.8 (±2.0)	8.5 (±2.4)	6.7 (±2.1)	11.0 (±3.2)	10.0 (±2.5)	12.5 (±2.8)	13.2 (±3.4)	12.0 (±2.1)	12.4 (±3.7)
GRADE									
9	5.7 (±2.0)	7.2 (±2.5)	6.3 (±2.5)	7.4 (±2.7)	6.4 (±2.7)	9.1 (±3.0)	10.3 (±4.7)	10.8 (±2.6)	11.0 (±3.8)
10	6.9 (±1.8)	9.6 (±3.5)	10.1 (±3.7)	10.7 (±4.6)	9.5 (±3.0)	14.0 (±5.2)	15.9 (±4.4)	13.6 (±3.0)	15.2 (±3.2)
11	8.1 (±3.9)	9.3 (±3.2)	8.1 (±2.6)	10.7 (±3.3)	14.7 (±5.2)	10.9 (±3.2)	14.4 (±5.1)	16.5 (±4.2)	12.8 (±4.2)
12	13.3 (±3.3)	11.0 (±4.5)	10.9 (±4.1)	13.0 (±3.7)	14.5 (±4.3)	14.1 (±6.5)	17.0 (±5.8)	15.4 (±3.9)	17.1 (±4.0)

	2008	2006	2004	2003	2002	2000	1999	1998
TOTAL	16.3 (±3.7)	13.6 (±4.0)	18.0 (±1.8)	17.8 (±1.2)	N/A	18.6 (±2.9)	20.3 (±1.6)	22.3 (±3.9)
SEX								
FEMALE	11.3 (±3.9)	8.5 (±4.5)	13.4 (±2.4)	12.9 (±1.3)	N/A	11.2 (±3.1)	13.4 (±2.0)	13.8 (±3.3)
MALE	21.3 (±4.6)	18.9 (±4.5)	22.1 (±2.4)	22.7 (±1.8)	N/A	26.2 (±3.7)	27.8 (±2.8)	31.1 (±5.4)
RACE								
WHITE	16.0 (±4.3)	14.4 (±4.5)	20.7 (±3.1)	18.7 (±1.9)	N/A	19.6 (±4.1)	17.9 (±1.7)	23.5 (±4.4)
BLACK	15.2 (±5.6)	12.6 (±3.8)	15.0 (±2.6)	15.6 (±1.6)	N/A	15.7 (±3.5)	22.5 (±2.5)	20.1 (±5.1)
GRADE								
9	13.7 (±4.0)	11.4 (±3.1)	17.2 (±3.8)	17.4 (±1.6)	N/A	20.7 (±4.1)	19.2 (±3.3)	18.9 (±5.6)
10	15.3 (±4.9)	12.0 (±7.4)	17.5 (±4.2)	16.8 (±1.8)	N/A	16.8 (±3.9)	23.6 (±3.2)	24.7 (±8.5)
11	13.2 (±10.1)	16.3 (±4.7)	19.1 (±3.7)	19.2 (±2.9)	N/A	18.6 (±6.5)	17.9 (±4.1)	23.8 (±5.4)
12	23.1 (±5.6)	16.2 (±4.3)	19.0 (±4.3)	17.9 (±1.9)	N/A	16.4 (±4.6)	20.8 (±3.5)	22.0 (±6.1)

Mississippi Youth Tobacco Use {1998-2017} Current Cigar Smoking - Public Middle School

	2017	2016	2015	2014	2013	2012	2011	2010	2009
TOTAL	2.9 (±1.1)	3.5 (±1.1)	2.9 (±0.9)	5.4 (±2.3)	4.2 (±1.3)	4.2 (±1.5)	4.8 (±1.4)	5.5 (±1.3)	6.3 (±1.4)
SEX									
FEMALE	2.4 (±1.4)	2.0 (±1.2)	2.6 (±1.5)	2.6 (±1.3)	2.4 (±1.3)	2.7 (±1.0)	3.5 (±1.3)	4.2 (±1.5)	4.4 (±1.5)
MALE	3.5 (±1.4)	5.0 (±1.8)	3.2 (±0.9)	8.1 (±4.1)	5.9 (±1.6)	5.5 (±2.3)	6.1 (±1.9)	6.6 (±1.9)	8.1 (±2.3)
RACE									
WHITE	3.1 (±1.3)	2.6 (±1.7)	2.2 (±1.1)	3.4 (±2.0)	2.6 (±0.9)	3.8 (±1.6)	3.6 (±1.9)	4.5 (±1.4)	5.6 (±2.6)
BLACK	2.5 (±1.2)	4.0 (±1.7)	3.6 (±1.6)	7.7 (±3.5)	5.5 (±1.6)	4.6 (±2.5)	5.9 (±2.0)	6.3 (±2.1)	6.6 (±1.8)
GRADE									
6	1.0 (1.0)	3.4 (±2.5)	0.9 (±0.7)	3.5 (±3.9)	3.4 (±1.8)	3.0 (±2.5)	4.3 (±1.7)	3.0 (±1.3)	3.4 (±1.8)
7	2.7 (±1.6)	2.9 (±1.5)	4.9 (±2.1)	4.1 (±3.8)	4.5 (±1.3)	2.9 (±1.7)	4.9 (±2.6)	5.5 (±2.3)	5.9 (±2.5)
8	5.0 (±2.2)	4.3 (±2.5)	2.9 (±1.3)	8.7 (±3.5)	4.6 (±2.5)	6.9 (±2.6)	4.9 (±2.2)	7.9 (±2.1)	9.7 (±2.8)

	2008	2006	2004	2003	2002	2000	1999	1998
TOTAL	9.3 (±2.2)	6.1 (±1.7)	10.6 (±1.8)	9.0 (±1.1)	N/A	12.1 (±2.2)	16.6 (±2.7)	16.4 (±3.5)
SEX								
FEMALE	6.6 (±2.2)	4.0 (±1.5)	8.5 (±1.5)	6.9 (±1.1)	N/A	10.2 (±2.8)	10.8 (±2.6)	12.3 (±4.5)
MALE	11.8 (±3.0)	8.3 (±2.7)	12.7 (±2.8)	10.9 (±1.2)	N/A	13.9 (±2.7)	22.1 (±3.6)	20.4 (±3.9)
RACE								
WHITE	6.5 (±2.0)	4.7 (±2.2)	9.0 (±1.8)	6.5 (±1.0)	N/A	9.2 (±2.2)	14.2 (±2.5)	12.3 (±2.3)
BLACK	11.4 (±3.5)	7.4 (±2.2)	12.1 (±2.8)	11.1 (±1.3)	N/A	14.8 (±3.9)	19.2 (±4.1)	19.9 (±5.4)
GRADE								
6	5.1 (±4.0)	4.4 (±1.7)	7.6 (±1.5)	6.1 (±1.1)	N/A	9.7 (±4.8)	12.0 (±4.0)	7.9 (±2.1)
7	10.9 (±4.0)	4.9 (±3.1)	13.0 (±3.7)	8.8 (±1.6)	N/A	11.8 (±3.5)	16.0 (±3.6)	17.1 (±8.3)
8	12.1 (±2.9)	8.8 (±3.1)	11.2 (±4.0)	12.0 (±1.5)	N/A	14.9 (±4.5)	21.6 (±4.0)	21.2 (±3.9)



Mississippi Youth Tobacco Use {1998-2017} Ever Tried a Cigar - Public High School

	2017	2016	2015	2014	2013	2012	2011	2010	2009
TOTAL	20.0 (±2.6)	22.8 (±2.4)	22.0 (±3.1)	24.8 (±2.9)	25.0 (±3.8)	29.5 (±3.3)	28.7 (±3.7)	29.1 (±3.6)	29.8 (±2.8)
SEX									
FEMALE	18.2 (±3.7)	19.0 (±3.4)	15.6 (±2.8)	18.6 (±2.9)	20.2 (±4.5)	25.2 (±4.1)	20.7 (±3.7)	24.9 (±4.4)	23.2 (±3.2)
MALE	21.7 (±4.1)	26.4 (±3.2)	28.2 (±4.6)	30.5 (±4.4)	29.7 (±4.9)	34.0 (±5.3)	36.9 (±4.5)	33.3 (±5.0)	36.6 (±4.3)
RACE									
WHITE	22.3 (±3.0)	25.8 (±3.1)	26.2 (±4.6)	27.5 (±3.9)	28.3 (±4.9)	30.9 (±5.6)	32.8 (±4.6)	34.0 (±5.0)	33.1 (±4.2)
BLACK	17.1 (±3.5)	20.6 (±3.3)	17.3 (±3.2)	22.4 (±4.2)	22.2 (±5.0)	28.1 (±4.0)	24.8 (±5.1)	24.6 (±4.0)	26.2 (±4.3)
GRADE									
9	14.7 (±2.3)	17.8 (±4.6)	15.1 (±4.9)	17.2 (±4.5)	15.8 (±4.6)	19.4 (±5.9)	24.2 (±5.2)	21.5 (±3.5)	24.8 (±4.4)
10	18.2 (±3.3)	22.8 (±4.7)	26.7 (±4.8)	24.7 (±6.4)	24.2 (±5.1)	34.5 (±5.3)	25.7 (±4.5)	29.4 (±5.3)	31.0 (±5.2)
11	18.7 (±6.4)	26.0 (±4.6)	22.0 (±6.8)	27.8 (±5.3)	28.4 (±7.5)	29.9 (±5.1)	30.6 (±7.8)	32.6 (±6.5)	28.4 (±5.1)
12	28.8 (±4.3)	26.0 (±6.0)	25.5 (±6.5)	31.8 (±5.8)	34.4 (±7.5)	36.5 (±7.3)	36.5 (±7.6)	35.3 (±5.6)	37.3 (±5.5)

	2008	2006	2004	2003	2002	2000	1999	1998
TOTAL	32.5 (±3.6)	37.7 (±3.0)	39.2 (±2.7)	39.4 (±1.3)	N/A	48.8 (±4.2)	54.7 (±3.0)	53.0 (±3.0)
SEX								
FEMALE	25.4 (±4.9)	30.8 (±3.7)	31.5 (±3.3)	31.9 (±1.8)	N/A	39.4 (±5.9)	44.3 (±3.7)	43.2 (±3.6)
MALE	40.2 (±5.4)	44.9 (±4.4)	46.7 (±4.1)	47.4 (±1.8)	N/A	58.9 (±4.0)	65.8 (±3.5)	63.5 (±3.5)
RACE								
WHITE	35.7 (±4.0)	38.9 (±3.6)	41.4 (±3.8)	42.4 (±2.2)	N/A	52.5 (±6.5)	54.2 (±3.6)	54.4 (±4.7)
BLACK	28.5 (±5.2)	36.8 (±5.3)	36.9 (±3.8)	35.6 (±1.8)	N/A	44.0 (±5.4)	54.3 (±4.6)	51.1 (±4.9)
GRADE								
9	29.3 (±6.7)	39.0 (±3.3)	35.3 (±5.2)	36.7 (±2.3)	N/A	44.6 (±6.1)	53.1 (±3.4)	50.0 (±6.3)
10	34.3 (±4.8)	36.6 (±9.8)	39.2 (±4.5)	36.7 (±1.9)	N/A	46.7 (±5.7)	52.9 (±6.9)	49.9 (±6.9)
11	26.5 (±7.9)	30.7 (±9.6)	39.3 (±4.6)	41.9 (±3.3)	N/A	53.5 (±6.4)	55.0 (±6.9)	57.5 (±4.8)
12	40.7 (±4.8)	45.8 (±4.8)	45.7 (±4.7)	43.7 (±2.4)	N/A	51.1 (±7.2)	58.3 (±7.2)	56.9 (±6.6)

Mississippi Youth Tobacco Use {1998-2017} Ever Tried a Cigar - Public Middle School

	2017	2016	2015	2014	2013	2012	2011	2010	2009
TOTAL	6.8 (±1.8)	9.5 (±2.0)	8.6 (±1.8)	9.8 (±3.2)	9.3 (±2.1)	10.6 (±2.6)	11.1 (±2.8)	11.7 (±2.1)	14.3 (±2.5)
SEX									
FEMALE	6.4 (±2.1)	6.2 (±1.9)	7.0 (±2.5)	4.9 (±1.6)	6.5 (±2.1)	8.1 (±2.4)	9.3 (±3.1)	9.1 (±2.6)	10.4 (±2.0)
MALE	7.1 (±1.9)	12.7 (±3.6)	10.1 (±1.9)	14.5 (±5.2)	12.1 (±2.5)	13.0 (±3.9)	13.0 (±3.1)	14.0 (±3.2)	18.2 (±3.8)
RACE									
WHITE	6.2 (±2.3)	8.7 (±2.8)	7.3 (±1.8)	7.3 (±2.7)	7.5 (±2.4)	12.4 (±2.6)	9.4 (±4.3)	10.2 (±2.7)	14.1 (±3.9)
BLACK	6.9 (±2.6)	9.9 (±2.3)	10.0 (±3.0)	12.2 (±4.6)	10.9 (±2.8)	9.4 (±4.0)	13.0 (±3.2)	12.9 (±3.1)	14.1 (±3.0)
GRADE									
6	3.0 (±1.4)	8.6 (±3.0)	5.0 (±2.3)	6.2 (±4.3)	6.0 (±2.4)	6.0 (±3.7)	8.3 (±4.1)	6.4 (±2.4)	7.4 (±2.7)
7	5.5 (±2.2)	6.6 (±2.4)	9.8 (±3.2)	10.0 (±7.4)	8.9 (±2.5)	10.9 (±4.0)	11.2 (±3.5)	10.9 (±3.5)	13.7 (±5.0)
8	11.7 (±3.4)	13.1 (±4.2)	10.9 (±2.9)	13.3 (±4.8)	13.3 (±4.0)	15.5 (±3.6)	13.6 (±4.2)	17.5 (±3.6)	21.9 (±4.2)

	2008	2006	2004	2003	2002	2000	1999	1998
TOTAL	19.8 (±2.5)	18.6 (±2.7)	22.2 (±2.5)	20.4 (±1.7)	N/A	31.8 (±2.5)	33.7 (±4.5)	32.5 (±4.1)
SEX								
FEMALE	14.9 (±2.6)	14.3 (±2.8)	17.9 (±2.1)	15.6 (±1.8)	N/A	23.6 (±3.1)	24.6 (±4.3)	24.2 (±5.6)
MALE	24.5 (±3.1)	22.9 (±4.0)	26.6 (±3.7)	25.0 (±1.8)	N/A	39.5 (±4.0)	42.2 (±5.4)	40.7 (±3.9)
RACE								
WHITE	14.9 (±2.7)	17.0 (±3.5)	19.6 (±3.0)	17.5 (±1.8)	N/A	29.4 (±2.6)	31.1 (±3.3)	29.2 (±3.6)
BLACK	24.1 (±3.2)	20.4 (±3.5)	24.8 (±3.2)	22.7 (±2.0)	N/A	35.0 (±5.1)	36.3 (±7.2)	35.6 (±6.4)
GRADE								
6	11.9 (±3.3)	14.7 (±3.4)	14.8 (±3.0)	14.1 (±1.7)	N/A	22.8 (±5.1)	24.6 (±6.8)	19.2 (±3.5)
7	20.4 (±3.8)	16.0 (±4.6)	23.9 (±4.3)	20.6 (±2.0)	N/A	33.2 (±4.4)	35.6 (±5.9)	35.5 (±8.7)
8	27.6 (±4.1)	25.3 (±3.5)	27.6 (±4.4)	26.5 (±2.4)	N/A	39.2 (±5.5)	40.3 (±5.5)	40.2 (±6.4)

Mississippi Youth Tobacco Use {1998-2017} Frequent Cigar Smoking - Public High School

APPENDIX {CIGARS}

	2017	2016	2015	2014	2013	2012	2011	2010	2009
TOTAL	1.2 (±0.5)	0.8 (±0.3)	0.5 (±0.4)	1.5 (±0.8)	1.8 (±0.8)	2.1 (±0.9)	2.6 (±1.0)	2.2 (±0.8)	2.4 (±0.7)
SEX									
FEMALE	1.5 (±0.9)	0.3 (±0.3)	0.1 (±0.2)	0.8 (±0.8)	1.0 (±0.5)	0.9 (±0.8)	1.8 (±1.0)	1.3 (±0.9)	0.9 (±0.5)
MALE	0.9 (±0.5)	1.3 (±0.7)	0.9 (±0.8)	2.2 (±1.3)	2.6 (±1.5)	3.2 (±1.4)	3.3 (±1.8)	3.1 (±1.5)	4.0 (±1.3)
RACE									
WHITE	1.3 (±0.6)	0.5 (±0.5)	0.1 (±0.2)	0.7 (±0.7)	1.5 (±0.9)	1.3 (±0.9)	2.2 (±0.9)	2.0 (±1.2)	2.3 (±1.1)
BLACK	0.8 (±0.6)	0.8 (±0.6)	0.9 (±0.9)	2.2 (±1.3)	2.1 (±1.0)	2.8 (±1.3)	2.9 (±1.6)	2.2 (±0.9)	2.3 (±1.8)
GRADE									
9	0.7 (±0.7)	0.4 (±0.4)	0.2 (±0.3)	1.3 (±1.5)	0.0 (±0.0)	0.9 (±0.8)	1.7 (±1.5)	1.5 (±1.2)	1.7 (±1.2)
10	0.9 (±0.6)	0.2 (±0.3)	0.2 (±0.4)	1.7 (±1.4)	2.0 (±1.7)	3.2 (±2.0)	2.1 (±1.7)	0.6 (±0.7)	2.4 (±1.5)
11	1.0 (±1.2)	0.8 (±1.1)	0.9 (±1.2)	1.6 (±1.4)	2.5 (±1.6)	2.0 (±1.9)	1.7 (±1.2)	2.9 (±2.1)	4.3 (±1.9)
12	2.4 (±1.3)	2.0 (±1.3)	0.7 (±1.0)	1.1 (±1.2)	3.1 (±1.4)	2.3 (±2.4)	5.0 (±2.6)	4.1 (±1.9)	1.3 (±1.0)

	2008	2006	2004	2003	2002	2000	1999	1998
TOTAL	2.7 (±1.5)	1.6 (±0.9)	2.7 (±0.6)	2.0 (±0.4)	N/A	2.1 (±1.0)	2.7 (±1.0)	1.4 (±0.9)
SEX								
FEMALE	2.4 (±1.6)	0.5 (±0.4)	1.1 (±0.5)	0.9 (±0.3)	N/A	1.1 (±0.7)	1.6 (±1.1)	0.2 (±1.0)
MALE	3.0 (±1.8)	2.7 (±1.6)	4.3 (±1.1)	3.1 (±0.8)	N/A	2.9 (±1.5)	4.0 (±1.8)	2.6 (±1.5)
RACE								
WHITE	1.5 (±1.0)	1.7 (±1.1)	2.6 (±0.8)	1.6 (±0.5)	N/A	1.1 (±0.8)	1.8 (±1.0)	1.5 (±1.1)
BLACK	3.7 (±2.6)	1.3 (±1.2)	2.8 (±1.3)	1.9 (±0.6)	N/A	2.3 (±1.8)	3.8 (±1.4)	0.9 (±1.2)
GRADE								
9	1.5 (±1.3)	0.6 (±0.8)	1.8 (±0.7)	1.9 (±0.6)	N/A	1.3 (±1.1)	2.4 (±1.4)	1.1 (±1.3)
10	3.1 (±2.2)	2.0 (±1.7)	2.8 (±1.2)	1.6 (±0.6)	N/A	2.3 (±1.1)	3.3 (±1.6)	1.8 (±1.2)
11	1.7 (±2.6)	1.8 (±1.6)	4.0 (±2.3)	2.5 (±1.1)	N/A	2.4 (±2.0)	3.0 (±2.5)	1.0 (±1.6)
12	4.6 (±3.1)	2.2 (±1.6)	2.9 (±1.1)	2.2 (±0.7)	N/A	2.2 (±1.8)	2.4 (±1.3)	1.4 (±1.5)

Mississippi Youth Tobacco Use {1998-2017} Frequent Cigar Smoking - Public Middle School

	2017	2016	2015	2014	2013	2012	2011	2010	2009
TOTAL	0.2 (±0.2)	0.5 (±0.3)	0.3 (±0.3)	0.3 (±0.2)	0.6 (±0.4)	0.1 (±0.2)	0.6 (±0.3)	0.6 (±0.4)	1.2 (±0.6)
SEX									
FEMALE	0.0 (±0.0)	0.1 (±0.2)	0.1 (±0.1)	0.3 (±0.4)	0.1 (±0.2)	0.1 (±0.2)	0.1 (±0.3)	0.3 (±0.4)	0.6 (±0.6)
MALE	0.3 (±0.3)	0.8 (±0.5)	0.6 (±0.5)	0.3 (±0.1)	1.0 (±0.7)	0.1 (±0.3)	1.1 (±0.7)	0.8 (±0.7)	1.8 (±1.0)
RACE									
WHITE	0.3 (±0.3)	0.4 (±0.3)	0.5 (±0.5)	0.2 (±0.1)	0.5 (±0.5)	0.3 (±0.4)	0.2 (±0.4)	0.5 (±0.7)	1.0 (±0.6)
BLACK	0.0 (±0.0)	0.4 (±0.5)	0.1 (±0.2)	0.3 (±0.4)	0.5 (±0.4)	0.0 (±0.0)	1.0 (±0.6)	0.6 (±0.6)	1.3 (±1.0)
GRADE									
6	0.0 (±0.0)	0.4 (±0.5)	0.1 (±0.1)	0.2 (±0.3)	0.7 (±0.7)	0.0 (±0.0)	1.4 (±1.0)	0.7 (±0.7)	0.9 (±0.7)
7	0.2 (±0.3)	0.3 (±0.4)	0.3 (±0.4)	0.2 (±0.3)	0.0 (±0.1)	0.1 (±0.3)	0.3 (±0.4)	0.2 (±0.3)	2.0 (±1.2)
8	0.3 (±0.4)	0.7 (±0.8)	0.6 (±0.7)	0.5 (±0.6)	1.1 (±0.7)	0.2 (±0.5)	0.2 (±0.4)	0.8 (±1.0)	0.7 (±0.9)

	2008	2006	2004	2003	2002	2000	1999	1998
TOTAL	1.7 (±0.8)	0.9 (±0.6)	1.0 (±0.4)	0.9 (±0.3)	N/A	0.9 (±0.7)	0.9 (±0.4)	1.7 (±1.1)
SEX								
FEMALE	0.9 (±0.5)	0.3 (±0.3)	0.4 (±0.3)	0.5 (±0.3)	N/A	0.1 (±0.6)	0.3 (±0.3)	0.9 (±0.9)
MALE	2.5 (±1.5)	1.5 (±1.1)	1.6 (±0.8)	1.3 (±0.3)	N/A	1.7 (±1.3)	1.5 (±0.8)	2.4 (±1.7)
RACE								
WHITE	1.3 (±0.9)	0.8 (±0.8)	0.9 (±0.6)	0.8 (±0.3)	N/A	0.8 (±1.4)	0.9 (±0.6)	1.3 (±1.9)
BLACK	1.8 (±1.3)	0.9 (±0.7)	1.1 (±0.5)	0.8 (±0.4)	N/A	1.2 (±1.1)	0.8 (±0.6)	1.7 (±1.2)
GRADE								
6	1.1 (±0.7)	0.6 (±0.6)	0.4 (±0.5)	0.6 (±0.4)	N/A	1.2 (±2.4)	1.0 (±0.8)	0.2 (±0.9)
7	1.9 (±1.9)	0.6 (±0.8)	1.3 (±0.7)	0.7 (±0.3)	N/A	0.9 (±1.1)	0.6 (±0.5)	1.0 (±1.3)
8	2.0 (±1.3)	1.2 (±1.0)	1.2 (±0.6)	1.4 (±0.5)	N/A	0.7 (±1.0)	1.1 (±0.8)	1.9 (±1.6)

Mississippi Youth Tobacco Use {2010-2017} Current Electronic Cigarette Smoking - Public High School

	2017	2016	2015	2014	2013	2012	2011	2010
TOTAL	11.5 (±2.9)	10.3 (±1.6)	12.0 (±2.1)	10.1 (±2.0)	2.9 (±1.0)	2.7 (±1.2)	2.3 (±1.1)	1.2 (±0.8)
SEX								
FEMALE	10.0 (±2.8)	9.1 (±2.0)	8.8 (±2.1)	9.0 (±2.2)	2.4 (±1.1)	1.9 (±1.2)	1.1 (±0.8)	1.1 (±1.0)
MALE	13.3 (±3.9)	11.4 (±2.9)	15.1 (±3.0)	11.3 (±2.9)	3.3 (±1.7)	3.4 (±1.9)	3.6 (±1.8)	1.3 (±0.9)
RACE								
WHITE	16.7 (±3.9)	15.1 (±2.6)	16.9 (±3.1)	13.6 (±3.7)	5.2 (±2.4)	4.7 (±2.6)	3.4 (±2.2)	1.8 (±1.3)
BLACK	6.4 (±2.0)	6.7 (±2.7)	5.7 (±1.8)	6.4 (±1.7)	0.8 (±0.8)	0.8 (±0.7)	1.6 (±1.1)	0.6 (±0.9)
GRADE								
9	9.0 (±2.7)	8.7 (±2.6)	9.1 (±2.5)	8.1 (±3.0)	1.9 (±1.5)	2.6 (±1.6)	1.7 (±1.5)	1.2 (±1.0)
10	11.7 (±4.2)	10.6 (±3.2)	13.6 (±4.9)	11.2 (±3.1)	2.3 (±1.8)	4.3 (±2.7)	1.9 (±2.0)	0.9 (±1.0)
11	10.5 (±6.2)	10.4 (±2.9)	10.2 (±5.0)	10.4 (±3.8)	2.7 (±1.6)	2.4 (±1.9)	1.3 (±1.3)	0.3 (±1.0)
12	15.2 (±5.5)	11.1 (±3.2)	15.3 (±5.2)	11.3 (±6.1)	5.0 (±2.3)	1.1 (±2.1)	4.4 (±3.4)	2.5 (±2.4)

Mississippi Youth Tobacco Use {2010-2017} Current Electronic Cigarette Smoking - Public Middle School

	2017	2016	2015	2014	2013	2012	2011	2010
TOTAL	4.8 (±1.2)	5.9 (±1.8)	4.6 (±1.5)	6.7 (±2.6)	1.5 (±0.7)	1.1 (0.6)	1.0 (±0.7)	0.6 (±0.4)
SEX								
FEMALE	4.6 (±1.4)	4.6 (±1.9)	4.2 (±1.9)	4.4 (±2.1)	1.0 (±0.9)	1.3 (±1.0)	0.5 (±0.8)	0.5 (±0.6)
MALE	5.1 (±1.9)	7.1 (±2.6)	5.0 (±1.7)	8.8 (±3.9)	1.9 (±0.9)	0.8 (±0.6)	1.6 (±1.2)	0.8 (±0.4)
RACE								
WHITE	6.5 (±2.3)	7.6 (±2.7)	5.9 (±2.4)	6.1 (±3.5)	2.0 (±1.2)	1.4 (±1.1)	1.6 (±1.5)	1.1 (±0.7)
BLACK	2.8 (±1.6)	4.1 (±2.5)	2.8 (±1.7)	7.8 (±3.9)	0.9 (±0.8)	0.2 (±0.4)	0.6 (±0.7)	0.3 (±0.5)
GRADE								
6	2.2 (±1.8)	4.3 (±2.9)	1.2 (±1.3)	5.3 (±3.7)	1.2 (±0.8)	0.4 (±1.1)	0.4 (±0.7)	0.7 (±1.1)
7	4.4 (±1.9)	5.1 (±3.0)	5.5 (±2.3)	7.1 (±4.8)	1.0 (±1.1)	0.5 (±0.7)	1.2 (±1.3)	0.3 (±1.3)
8	8.0 (±2.5)	8.1 (±2.3)	7.1 (±3.3)	7.7 (±4.0)	2.3 (±1.6)	2.3 (±1.2)	1.4 (±1.3)	1.0 (±1.1)

Changes between 2013 and 2014 in the wording and placement of questions about the use of e-cigarettes might have had an impact on reported use of these products.

Mississippi Youth Tobacco Use [2010-2017] Ever Tried an Electronic Cigarette - Public High School

	2017	2016	2015	2014	2013	2012	2011	2010
TOTAL	26.7 (±3.7)	26.9 (±2.7)	26.9 (±3.6)	21.6 (±3.0)	9.7 (±2.6)	8.4 (±3.6)	5.9 (±2.0)	1.9 (±1.1)
SEX								
FEMALE	26.4 (±4.4)	23.5 (±3.8)	22.6 (±3.2)	19.6 (±3.4)	8.5 (±2.7)	7.5 (±4.4)	2.8 (±1.7)	1.8 (±1.9)
MALE	27.5 (±4.9)	30.0 (±3.1)	31.4 (±4.9)	23.0 (±4.1)	10.9 (±3.2)	9.2 (±3.8)	9.1 (±3.1)	1.9 (±1.1)
RACE								
WHITE	36.8 (±4.4)	35.9 (±4.5)	39.4 (±3.1)	31.0 (±3.9)	17.8 (±4.5)	16.1 (±5.7)	11.8 (±3.2)	3.1 (±1.9)
BLACK	15.8 (±4.0)	17.8 (±2.9)	14.3 (±3.6)	11.1 (±2.8)	2.2 (±1.4)	1.1 (±1.1)	1.3 (±1.2)	0.7 (±0.8)
GRADE								
9	21.6 (±4.6)	21.1 (±5.1)	22.2 (±5.5)	15.9 (±5.1)	5.6 (±3.0)	6.1 (±3.9)	4.2 (±2.8)	1.6 (±0.9)
10	26.9 (±4.8)	29.4 (±5.4)	30.0 (±5.9)	23.4 (±5.5)	9.9 (±4.3)	10.1 (±4.6)	6.2 (±3.2)	1.2 (±1.5)
11	29.3 (±9.2)	30.0 (±4.3)	24.1 (±5.4)	22.3 (±5.6)	8.7 (±4.4)	7.0 (±3.6)	5.5 (±2.2)	1.2 (±1.5)
12	30.0 (±5.8)	26.8 (±6.0)	31.7 (±7.9)	26.6 (±7.4)	15.7 (±5.9)	10.9 (±9.0)	8.5 (±4.6)	3.8 (±4.7)

Mississippi Youth Tobacco Use [2010-2017] Ever Tried an Electronic Cigarette - Public Middle School

	2017	2016	2015	2014	2013	2012	2011	2010
TOTAL	12.0 (±2.6)	13.8 (±2.9)	12.0 (±2.0)	10.7 (±3.0)	3.2 (±1.2)	3.5 (±1.4)	2.0 (±0.9)	0.9 (±0.6)
SEX								
FEMALE	12.0 (±3.2)	10.5 (±2.6)	9.8 (±2.2)	6.7 (±2.5)	3.3 (±1.5)	3.6 (±1.8)	1.2 (±0.9)	0.7 (±0.8)
MALE	11.9 (±3.2)	17.0 (±4.4)	14.0 (±2.9)	14.7 (±4.5)	3.2 (±1.5)	3.5 (±1.8)	2.8 (±1.7)	1.0 (±0.8)
RACE								
WHITE	16.4 (±3.8)	17.8 (±5.0)	15.3 (±3.0)	11.8 (±3.9)	5.2 (±1.9)	5.1 (±2.3)	2.8 (±1.6)	1.4 (±1.2)
BLACK	8.1 (±3.3)	9.5 (±3.1)	8.1 (±2.1)	9.9 (±4.8)	1.2 (±0.9)	1.5 (±0.6)	1.2 (±1.1)	0.4 (±0.5)
GRADE								
6	7.3 (±2.6)	8.6 (±3.5)	7.4 (±2.2)	8.4 (±4.2)	1.8 (±1.1)	2.1 (±1.4)	1.4 (±1.3)	0.8 (±1.0)
7	12.0 (±4.2)	13.8 (±3.1)	11.8 (±2.4)	11.2 (±6.4)	3.4 (±2.1)	3.2 (±2.2)	2.3 (±1.5)	0.5 (±1.1)
8	16.5 (±4.5)	18.8 (±5.1)	16.5 (±4.4)	12.5 (±5.1)	4.6 (±1.5)	5.4 (±2.5)	2.0 (±1.5)	1.3 (±1.2)

Changes between 2013 and 2014 in the wording and placement of questions about the use of e-cigarettes might have had an impact on reported use of these products.



Mississippi Youth Tobacco Use {2010-2017} Frequent Electronic Cigarette Smoking - Public High School

	2017	2016	2015	2014
TOTAL	3.5 (±1.6)	1.9 (±0.8)	2.1 (±1.1)	1.6 (±0.9)
SEX				
FEMALE	2.6 (±1.4)	1.0 (±1.1)	1.6 (±1.0)	0.9 (0.9)
MALE	4.5 (±2.2)	2.8 (±1.3)	2.5 (±1.5)	2.2 (±1.3)
RACE				
WHITE	5.2 (±2.5)	3.1 (±1.7)	2.7 (±1.7)	1.8 (±1.3)
BLACK	1.6 (±1.0)	0.9 (±1.0)	1.1 (±0.8)	0.9 (±0.9)
GRADE				
9	2.1 (±1.3)	1.5 (±1.2)	1.9 (±1.6)	0.7 (±1.0)
10	2.8 (±1.9)	1.3 (±1.5)	3.0 (±2.6)	1.5 (±1.2)
11	4.2 (±3.1)	3.0 (±2.4)	1.4 (±1.5)	2.2 (±1.5)
12	5.0 (±3.4)	2.3 (±1.5)	1.6 (±1.5)	2.1 (±2.3)

Mississippi Youth Tobacco Use {2010-2017} Frequent Electronic Cigarette Smoking - Public Middle School

	2017	2016	2015	2014
TOTAL	1.2 (±0.6)	0.9 (±0.4)	0.6 (±0.5)	1.1 (±0.7)
SEX				
FEMALE	1.4 (±0.9)	0.4 (0.2)	0.3 (±0.4)	0.4 (±0.8)
MALE	1.0 (±0.7)	1.4 (0.7)	0.8 (±0.7)	1.6 (±1.3)
RACE				
WHITE	1.9 (±0.8)	0.8 (±0.9)	1.0 (±0.9)	1.1 (±1.6)
BLACK	0.3 (±0.5)	0.6 (±0.6)	0.1 (±0.5)	1.0 (±0.9)
GRADE				
6	0.0 (±0.0)	0.3 (±0.6)	0.1 (±0.2)	0.4 (±0.8)
7	0.6 (±0.6)	0.9 (±0.9)	0.9 (±0.9)	0.8 (±1.3)
8	3.0 (±1.6)	1.5 (±1.3)	0.7 (±0.9)	2.2 (±2.6)

methods

BACKGROUND

The Centers for Disease Control and Prevention's (CDC) Office on Smoking and Health (OSH) provides technical assistance to the states to administer this survey. Mississippi has administered the Youth Tobacco Survey (YTS) in 1998, 1999, 2000, 2002, 2003, 2004, 2006, 2008, 2009, 2010, 2011, 2012, 2013, 2014, 2015, 2016, and 2017.

THE PURPOSE OF THE YTS is to provide states with the data needed to design, implement, and evaluate comprehensive tobacco control programs that work to prevent young people from beginning tobacco use and help those who have already started using tobacco to quit.

THE YTS COLLECTS DATA from students in grades 6 through 12.

YTS DATA provide information on many key intermediate and long-term tobacco-related indicators, allowing states to measure progress toward state goals and objectives.

SAMPLE DESIGN

A multi-stage sample design was applied with public middle and high schools selected proportional to enrollment size. Classrooms were chosen randomly within selected schools, and all students in selected classes were eligible for participation. Data were collected by means of an

anonymous and confidential self-administered questionnaire. The questionnaires were group-administered in classrooms during a normal class period by teachers following standardized procedures.

EDITING, WEIGHTING, AND INITIAL ANALYSIS OF DATA

The Research Triangle Institute and the CDC's Office of Smoking and Health provided technical assistance with the processing and weighting of the data. A weighting factor was applied to each student record to adjust for non-response at the school, class, and student levels. SUDAAN statistical software was used to calculate standard errors for estimates and 95 percent confidence intervals. Weight adjustments were made for the following:

WEIGHT = $W1 * W2 * f1 * f2 * f3 * f4$

W1 = inverse of the probability of selecting the school

W2 = inverse of the probability of selecting the classroom within the school

F1 = a school-level non-response adjustment factor calculated by school size (small, medium, large)

F2 = a class adjustment factor calculated by school

F3 = a student-level non-response adjustment factor calculated by class

F4 = a post stratification adjustment factor calculated by gender and grade

contact us!

Nell Valentine, MS

nell.valentine@ssrc.msstate.edu

Robert McMillen, PhD

robert.mcmillen@ssrc.msstate.edu

Social Science Research Center

ssrc.msstate.edu

Mississippi State University

msstate.edu

**One Research Blvd., Suite 103
Starkville, MS 39759**

P: 662.325.7127

F: 662.325.7966

For more information visit

mstobaccodata.org



MISSISSIPPI STATE UNIVERSITY™
SOCIAL SCIENCE RESEARCH CENTER



MISSISSIPPI STATE DEPARTMENT OF HEALTH