

# Mississippi's State-Wide Tobacco Reporting and Progress System (TRAPS)

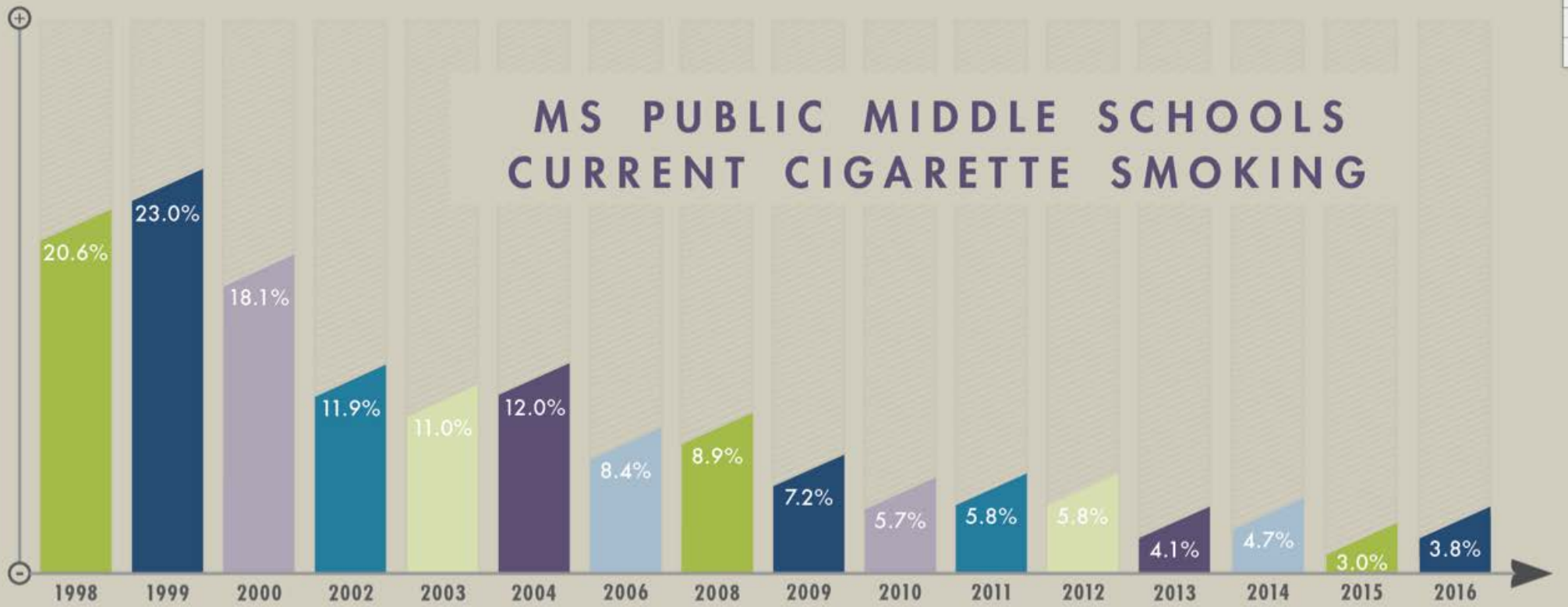
22 March, 2017



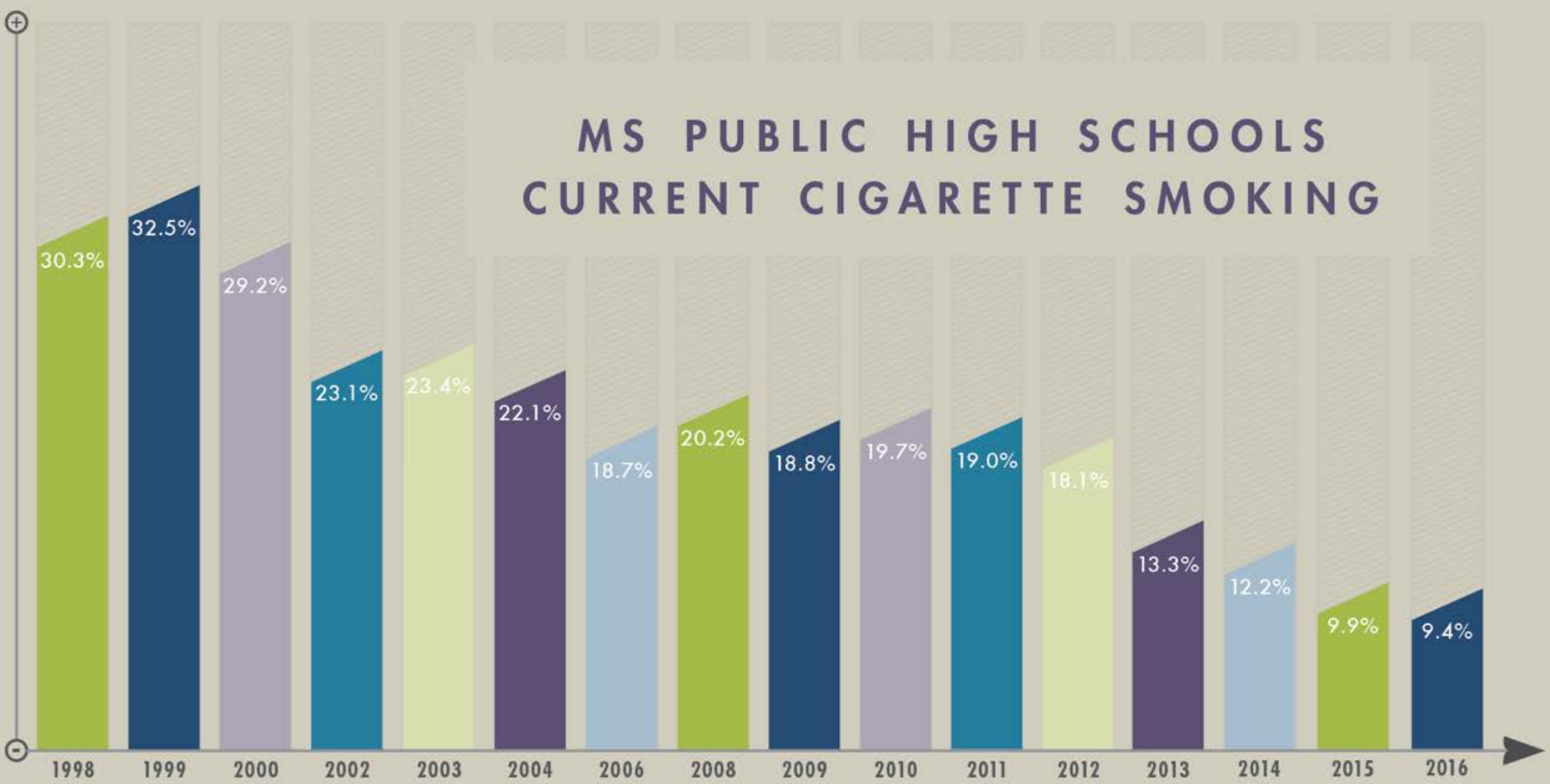
**MISSISSIPPI STATE UNIVERSITY™**  
SOCIAL SCIENCE RESEARCH CENTER



# MS PUBLIC MIDDLE SCHOOLS CURRENT CIGARETTE SMOKING



# MS PUBLIC HIGH SCHOOLS CURRENT CIGARETTE SMOKING



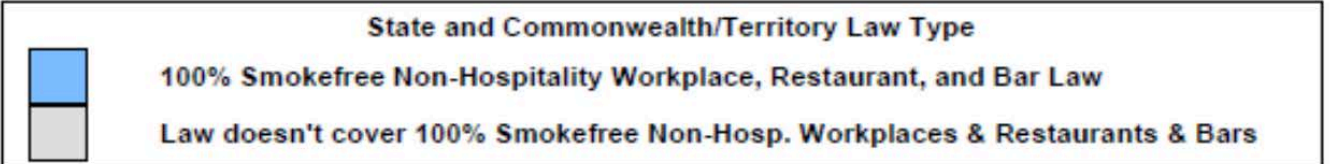
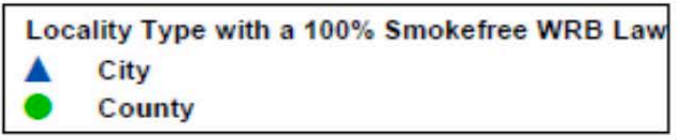
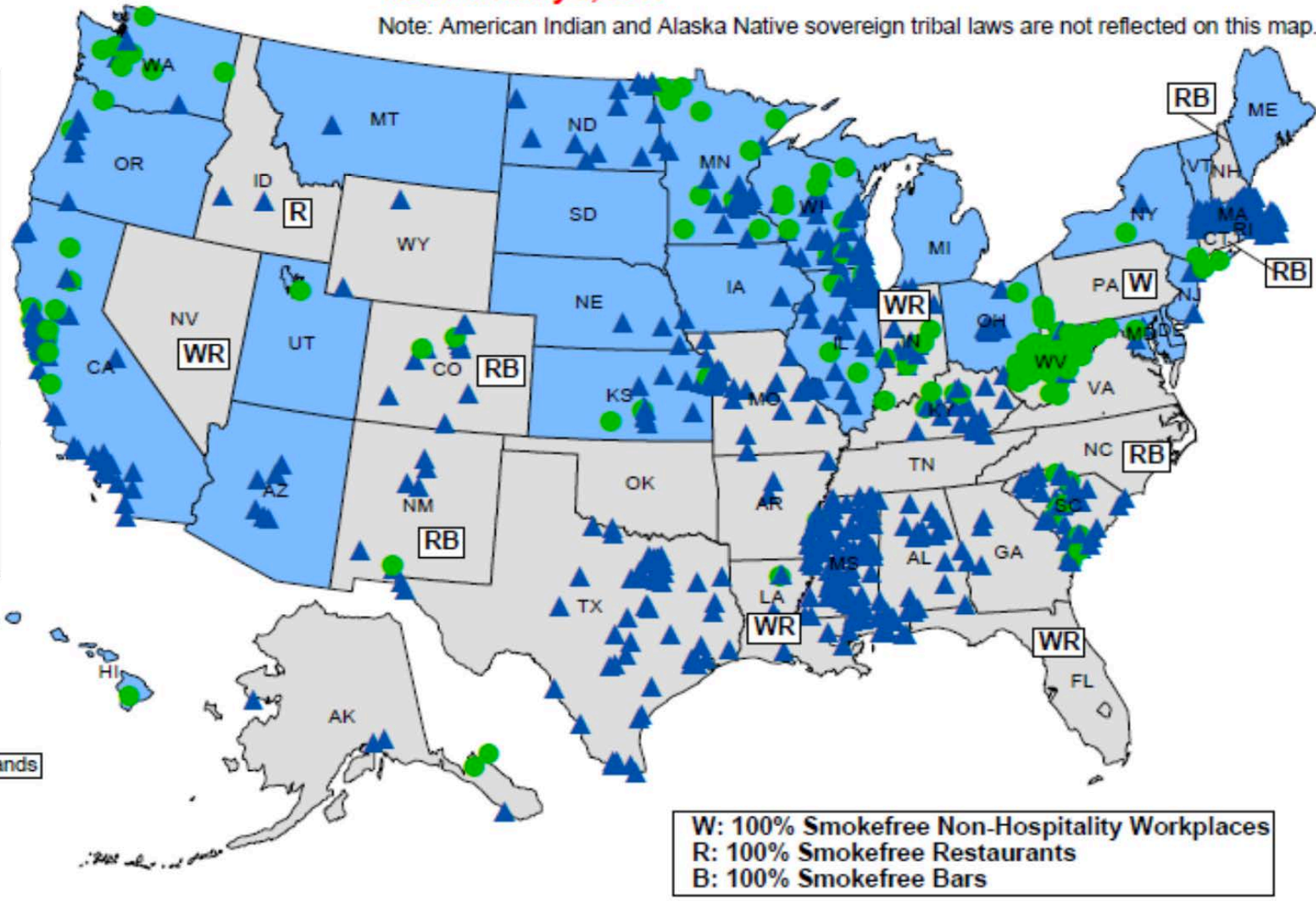
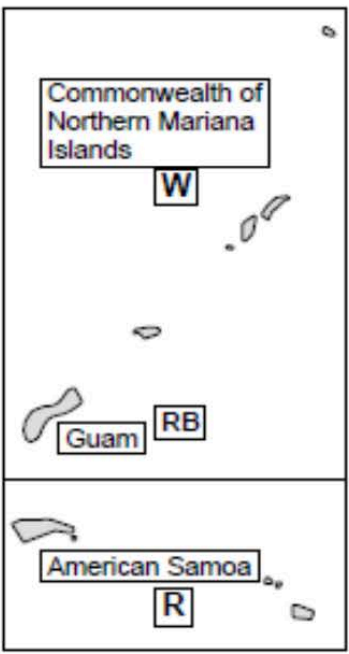
# U.S. 100% Smokefree Laws in Non-Hospitality Workplaces AND Restaurants AND Bars

## American Nonsmokers' Rights Foundation

*As of January 2, 2017*

Note: American Indian and Alaska Native sovereign tribal laws are not reflected on this map.

### Territories and Commonwealths



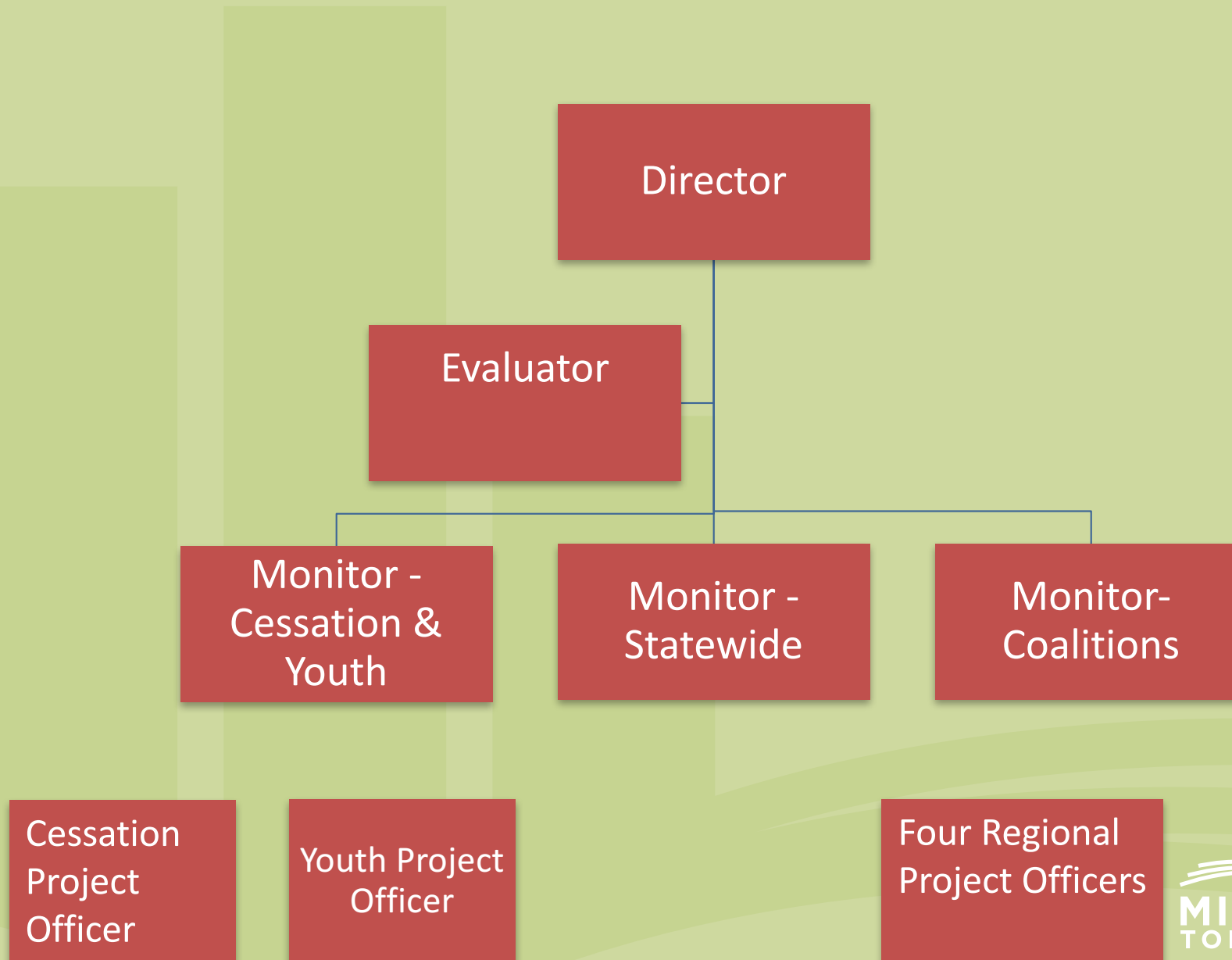
# Partners

- Mississippi State Department of Health's Office of Tobacco Control
  - OTC is charged with developing and implementing a comprehensive statewide strategy that includes tobacco education, prevention, and cessation programs.
- The Mississippi State University Social Science Research Center
  - The SSRC provides surveillance and evaluation services for OTC
- 60 Grantees to deliver education, prevention, and cessation interventions

# Mississippi Statewide Programs

- **State and Community Interventions**
  - The Partnership for a Healthy Mississippi
  - Mississippi Primary Healthcare Association
  - Mississippi Academy of Family Physicians Foundation
  - Mississippi Chapter of the American Academy of Pediatrics
  - Mississippi's Nurses Foundation
  - The University of Southern Mississippi Institute for Disability Studies
  - 34 community-based Mississippi Tobacco-free Coalitions
  - 9 Community Health Directors
  - 9 Community Health Public Health Nurses
- **Cessation Interventions**
  - The Mississippi Tobacco Quitline
  - The ACT Center for Tobacco Treatment, Education, and Research

# Organizational Chart



# The Challenge?

- How does the MSDH Office of Tobacco Control and the Evaluation Team monitor progress and successes of each grantee across the state in real time?



# An Example of a Very Bad Reporting System

	A	B	C	D	E	F	G	H	I	J	K	L	M	N	O	P				
2	MSU FORM A-03		<b>MISSISSIPPI STATE UNIVERSITY</b>																	
3															Seq. No. TRW	_____				
4															EBTA No.	_____				
5	<b>PD 158</b>	<b>TRAVEL AUTHORIZATION AND REIMBURSEMENT FORM</b>																		
6	<b>I. Travel Authorization</b>																			
7	<b>Section A.</b>																			
8	Name _____																			
9		First		Middle Initial		Last		MSU ID									Preg-Reg. Fees	_____	\$	_____
11	Email Address _____																FID #	_____	CK #	_____
12	Title _____																Adv. Rec. \$	_____	CK #	_____
	Campus Mail _____																CK #	_____		
14	Stop No.	_____	Department/County	_____												Dept. Phone #	_____			
16	Dept. Postal	_____														Dept. Contact &	_____			
17	Address	_____														Email Address	_____			
19	Date of Travel From	_____	20	_____	To	_____	20	_____	Mode of Transportation	_____										
21	Itinerary from	_____														To	_____			
22																(City/State)	_____	(City/State)	_____	
23	Intermediate stops	_____														<input type="checkbox"/>	Form A-09 has been completed and is on file			
25	Purpose of Trip	_____														with this department. (if applicable)				
27	<b>(Reference to organization must show full name - not acronyms or abbreviations)</b>																			

# A Grantee's Portal to TRAPS (Coalition Director)

T.R.A.P.S. Grantee Of MTFC Of Clay, Lowndes & Oktibbeha

FY2016-2017

Dashboard

Programmatic

Activities

Data

Help

robert.dummy

## Announcements

### March Tip For Success

3/1/2017

Jeopardy is a favorite game show for all ages. Why not bring it to the classroom? Stephanie Mayfield, the MTFC Director for George, Greene, and Stone Counties uses tri-fold boards to create a Jeopardy display. She makes four to five tobacco-related categories with specific questions under each. Stephanie plays the game with groups as well as individual students and has created Jeopardy formats designed for both elementary and high school students. Students compete for prizes, and as Stephanie says, "this way they are winning and they are learning." For more information, contact Stephanie at 601-723-0404.

### Quotes Please

2/28/2017

## MTFC of Clay, Lowndes & Oktibbeha

### Director and Agent Contact Information

ypruitt@frcnms.org

26245 West Main Street, Third Floor,  
West Point, MS 39773  
662-251-7176

dunderwood@frcnms.org

425 Magazine Street  
Tupelo, MS 38804  
662-844-0013

Operations

Reports

Resources

## Operations

Annual Workplan

Approved By-Laws

Care For Their Air

Coalition Membership

College Campus Ordinance Assessment

Monthly Calendar

Upload by the 1st of every month

### Files:

No file chosen

- [August Itinerary 16-17.docx](#) ✕
- [December Itinerary 16-17c.docx](#) ✕
- [February Itinerary 16-17b.docx](#) ✕
- [January Itinerary 16-17c.docx](#) ✕
- [July Itinerary 16-17.docx](#) ✕
- [March Itinerary 16-17 \(b\).docx](#) ✕
- [November Itinerary 16-17c.docx](#) ✕
- [October Itinerary 16-17c.docx](#) ✕
- [September Itinerary 16-17.docx](#) ✕

Multi Unit Housing Ordinance Assessment

Ordinance Document

Ordinance Workplan

Photovoice Power Point presentation

Quarterly Meetings

SWOT (strengths, weaknesses, opportunities,  
and threats) Assessment

Success Story

## Operations

## Reports

## Resources

2016/17 SOW

### Communication

[2017 Kick Butts Day Communication from MSDH](#)

IDS Monthly Flyer

Ordinance Documents

Other Stuff

RAT & FREE INFO

Templates & Forms

# Each Activity Mirrors the Grantee's Scope of Work

The screenshot displays a web application interface with a navigation bar. The navigation bar includes a dropdown menu for 'FY2016-2017', and several menu items: 'Dashboard', 'Programmatic', 'Activities', 'Data', 'Help', and a user profile 'robert.dummy'. The 'Activities' menu is expanded, showing a sub-menu with 'Events', 'Meetings', and 'Locations'. The 'Events' sub-menu is further expanded, showing a list of activity types: 'Advocacy/Policy', 'Programmatic Activities', 'Communication', 'Cessation', and 'General Awareness'. A green button labeled 'Event' is partially visible on the right side of the interface.

# Add Event



**TYPE \***

**DESCRIPTION**

**#ATT. \***

**#DIST. \***

**DATE \***

**LOCATION**

**COUNTY**

**CONDUCTED BY:**

**Cancel**

**Done**

# Add Event



**TYPE \***

**DESCRIPTION**

- ✓ ...
- VII. A 2 Ordinance Work (also upload any documentation)
- VII. A 3 Ordinance Passage (AFTER passage)
- VII. A 4 Merchant Training
- VII. A 4 Recognizing Smoke-Free Establishments (give details)
- VII. A 5 Multi-Unit Housing presentation
- VII. A1 Second Hand Smoke Presentation
- VII. B 1 School Sign Delivery
- VII. B 1 VERIFY School Signs Displayed
- VII. B 2 School Announcemnt Delivery

**COUNTY**



**Cancel**

**Done**

### Add New Location

[\[Hide\]](#)

**Location Name**

**Address**

**City**

**County**

**State**

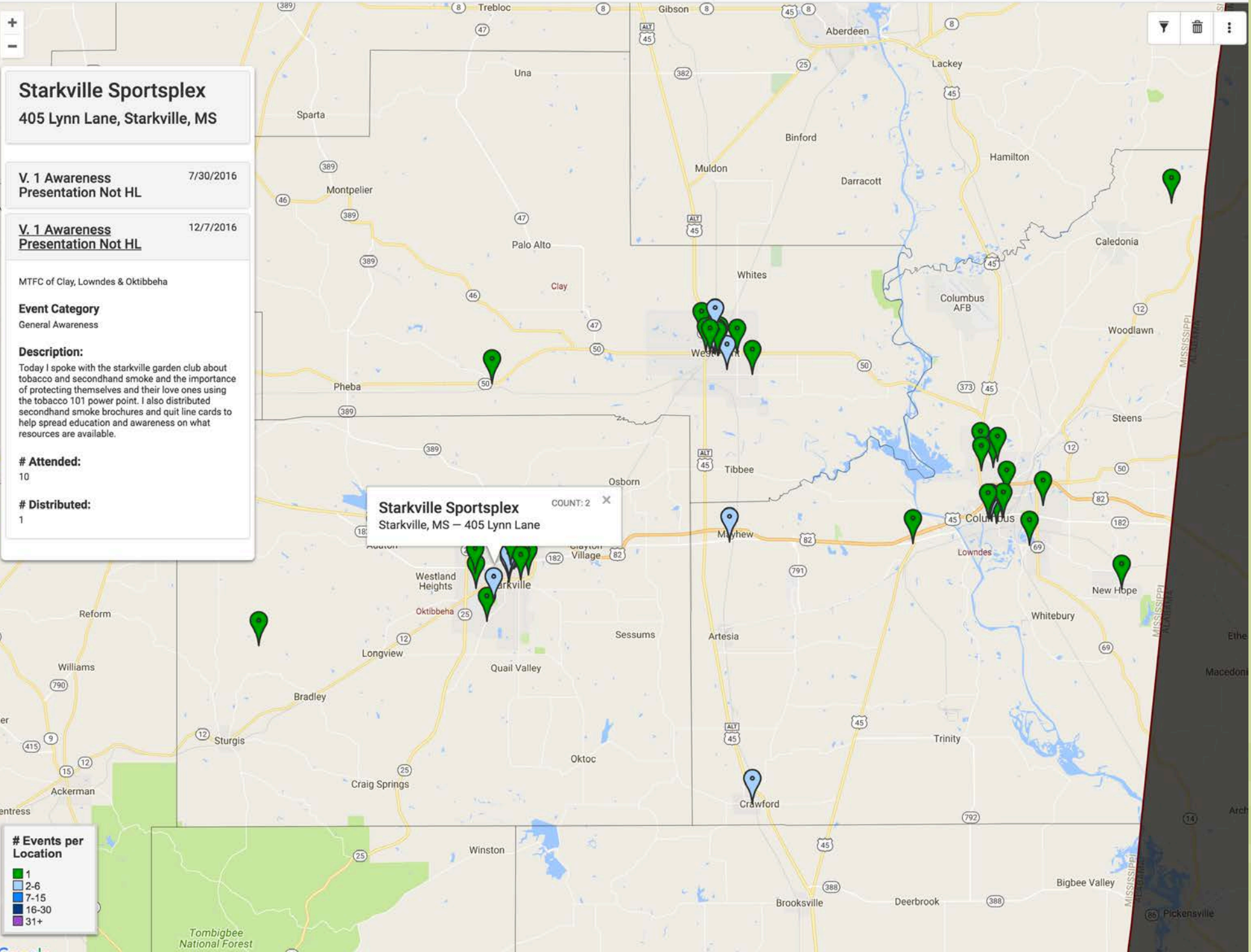
**Zip Code**

[+ Show Map](#)

[+ Add](#)

### Existing Locations

Name	Address	City	County	State	Mapped	Actions
Oktibbeha County Head Start Center	1617 Hwy 25 South	Starkville	Oktibbeha	MS	Yes	<a href="#">✎</a> <a href="#">✕</a>
2nd Baptist Church	314 Yeates Street	Starkville	Oktibbeha	MS	Yes	<a href="#">✎</a> <a href="#">✕</a>
5th Street Junior High	620 5th Street	West Point	Clay	MS	Yes	<a href="#">✎</a> <a href="#">✕</a>
A Bright Start Learning Center	1237 Hwy 82 E	Starkville	Oktibbeha	MS	Yes	<a href="#">✎</a> <a href="#">✕</a>
All American Quick Stop	1900 Main Street	Columbus	Lowndes	MS	Yes	<a href="#">✎</a> <a href="#">✕</a>



### Starkville Sportsplex

405 Lynn Lane, Starkville, MS

V. 1 Awareness Presentation Not HL 7/30/2016

V. 1 Awareness Presentation Not HL 12/7/2016

MTFC of Clay, Lowndes & Oktibbeha

#### Event Category

General Awareness

#### Description:

Today I spoke with the starkville garden club about tobacco and secondhand smoke and the importance of protecting themselves and their love ones using the tobacco 101 power point. I also distributed secondhand smoke brochures and quit line cards to help spread education and awareness on what resources are available.

#### # Attended:

10

#### # Distributed:

1

Starkville Sportsplex  
Starkville, MS — 405 Lynn Lane  
COUNT: 2

#### # Events per Location

- 1
- 2-6
- 7-15
- 16-30
- 31+



## Map Filter

### Fiscal Year

FY2016-2017

### Data Collection

Coalition Events

### Group Filter

MTFC of Clay, Lowndes & Oktibbe...

### Type Filter

All selected (34)

#### Select all

- VII. A1 Second Hand Smoke Presentation
- V. 4b Identify 6 Youth
- VI. Communication originated by MSDH
- VII. A 4 Merchant Training
- V. 9 Care for Their Air
- VII. A 4 Recognizing Smoke-Free Establishments (give details)
- V. 1 Awareness Presentation Not HL
- VII. B 2 School Announcemnt Delivery
- V. 10 Success story presentation at community event
- VIII. 2 Resource Distribution
- VIII. 1 Brochures & Coloring Pages
- VII. A 3 Ordinance Passage (AFTER passage)
- VII. B 1 VERIFY School Signs Displayed
- VII. A 5 Multi-Unit Housing presentation

Coalition Events

FY2016-2017

Yearly

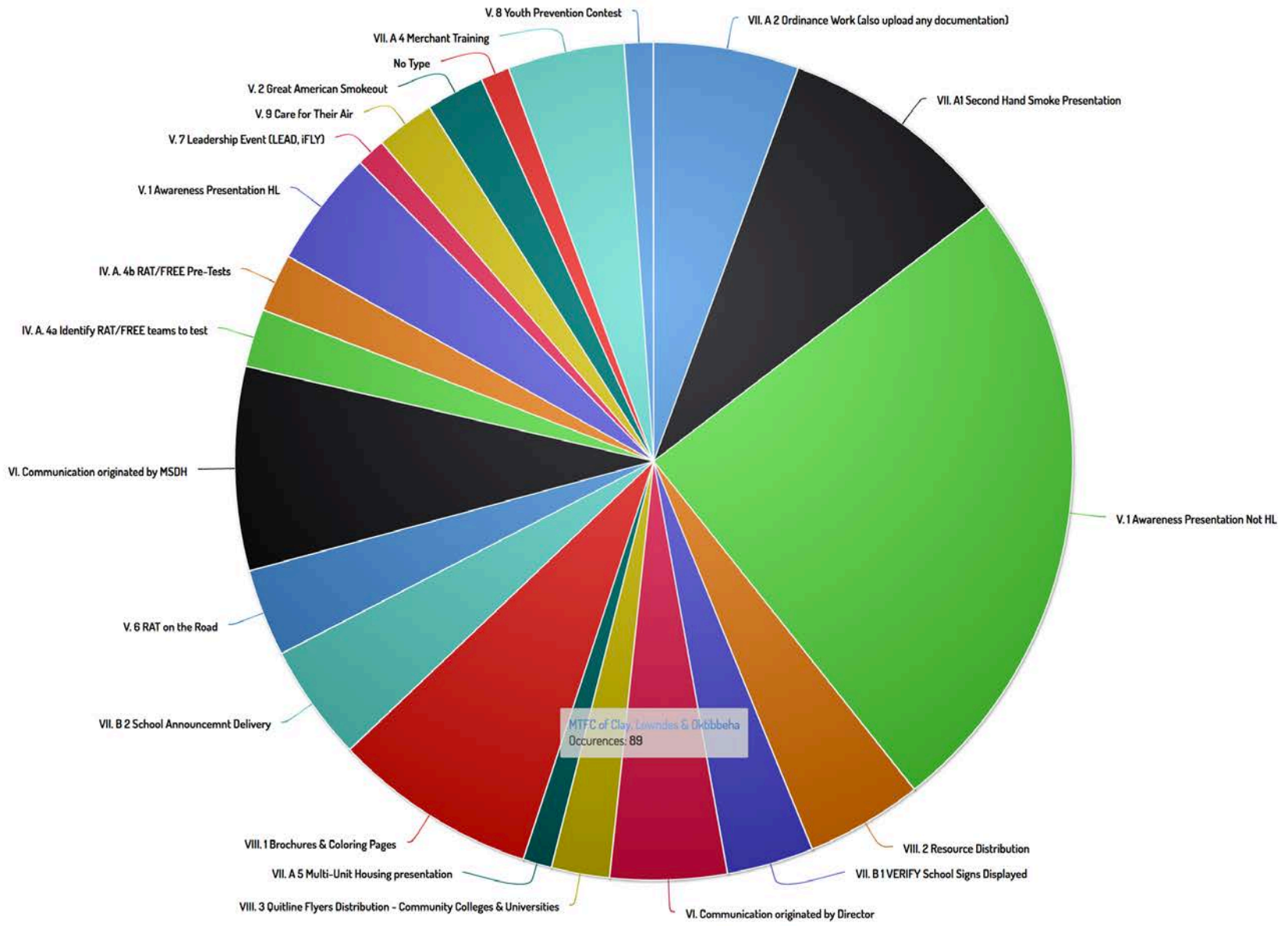
Submit

Total: 89

### COALITION EVENTS MTFC of Clay, Lowndes & Oktibbeha



Back to Groups



Data Collection

Coalition Events

Group Filter

MTFC of Clay, Lowndes & Oktibbeha

Type Filter

All selected (103)

Submit

Total: 467

COALITION EVENTS



- VII. A 2 Ordinance Work (also upload any documentation)
- V. 2 Great American Smoke Out
- VII. A 2 Ordinance Work (Process Documentation)
- IV. 4a Identify FREE/RAT teams to pre/post test
- VII. A1 Second Hand Smoke Presentation
- V. 1 Awareness Presentation Not HL
- \*Training Merchants to Comply with Tobacco Laws\*
- Pre-Test RAT
- VII. B 2 School Announcemnt Delivery
- Communication created by Director
- Awareness Presentation/Activity (High Level)
- Awareness Presentation/Activity (not High Level)
- V. 1 Awareness Presentation Not HL
- Kick Butts Day
- Announcements
- V. 8 Care for Their Air
- Deliver Smoke Free Signs
- Youth Tobacco Prevention Contests
- Communication created by MSDH
- Verify Smoke Free Signs in Schools
- V. 1 Awareness Presentation HL
- VIII. 1 Brochures & Coloring Pages
- Cessation Brochures & Coloring Pages
- Great American Smokeout
- VII. A & Merchant Training
- VI Communication originated by MSDH
- VII. A 5 Multi-Unit Housing Presentation
- VIII. 2 Resource Distribution
- V. 4 Kirk Butts Day
- Ordinance Work (Give a good description!)

Coalition Events

MTFC of Clay, Lowndes & Oktibbeha

All selected (103)

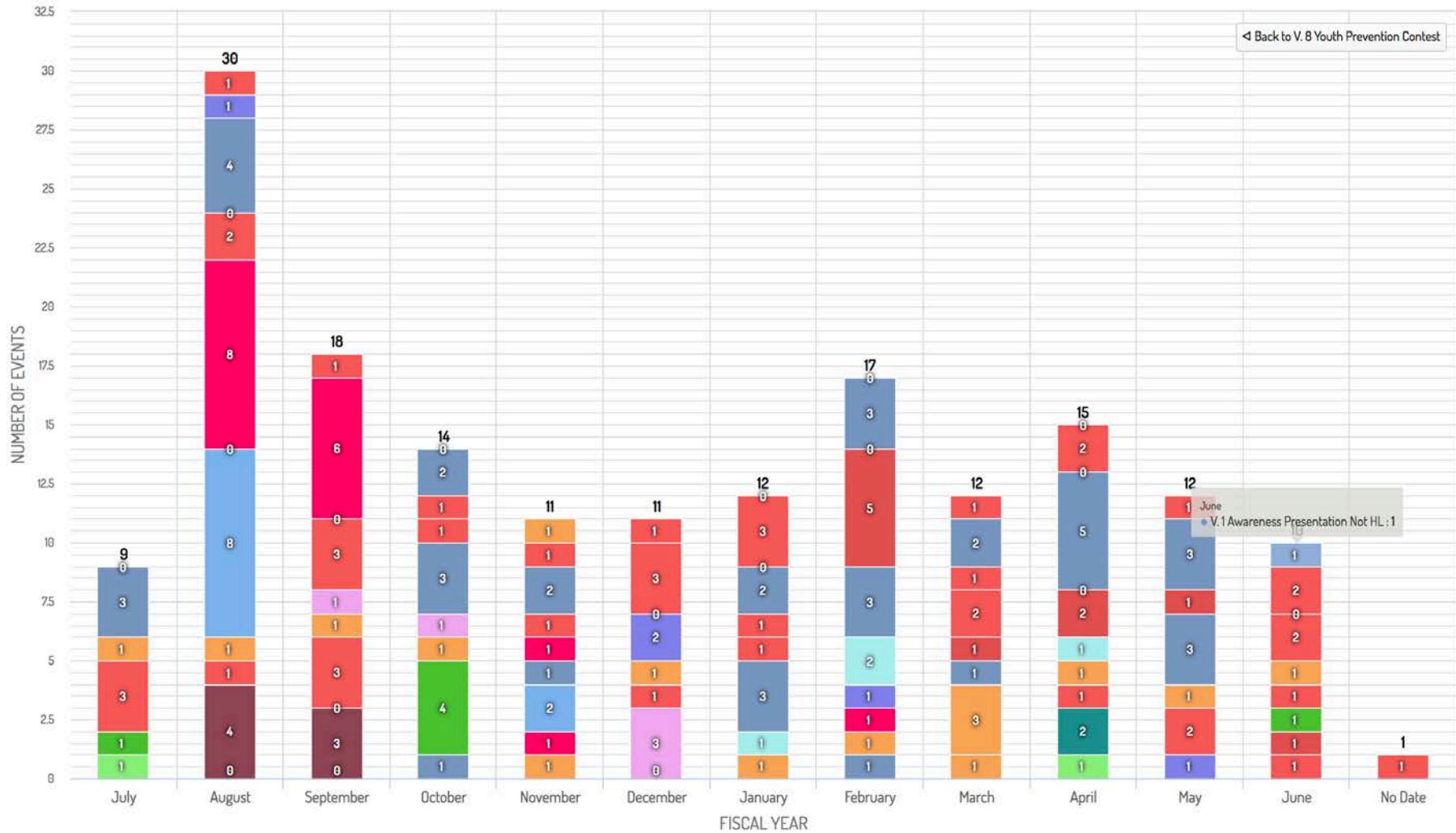
Submit

Total: 0

### COALITION EVENTS FY2015-2016



Back to V. 8 Youth Prevention Contest



- VII. A 2 Ordinance Work (also upload any documentation)
- V. 2 Great American Smoke Out
- VII. A 2 Ordinance Work (Process Documentation)
- IV. 4a Identify FREE/RAT teams to pre/post test
- VII. A1 Second Hand Smoke Presentation
- V. 1 Awareness Presentation Not HL
- \*Training Merchants to Comply with Tobacco Laws\*
- Pre-Test RAT
- VII. B 2 School Announcemnt Delivery
- Communication created by Director
- Awareness Presentation/Activity (High Level)
- V. 1 Awareness Presentation Not HL
- Second Hand Smoke Presentation
- Kick Butts Day
- Announcements
- V. 8 Care for Their Air
- Deliver Smoke Free Signs
- Youth Tobacco Prevention Contests
- Communication created by MSDH
- Verify Smoke Free Signs in Schools
- V. 1 Awareness Presentation HL
- VIII. 1 Brochures & Coloring Pages
- Cessation Brochures & Coloring Pages
- Great American Smokeout
- VII. A 4 Merchant Training
- VI. Communication originated by MSDH
- VII. A 5 Multi-Unit Housing Presentation
- VIII. 2 Resource Distribution
- V. 4 Kick Butts Day
- Ordinance Work (give a good description)

# The Evaluators' and Director's View

T.R.A.P.S. OTC-Director

FY2016-2017

Dashboard

Surveys

Data

Help

Robert.McMillen



- Cessation
- Coalition
- Statewide
- Youth
- Contact Directory

The February Flyer from the Institute for Disability Studies has been uploaded to your Resource Folder

## Welcome to T.R.A.P.S.

Contractor Reporting System

## About T.R.A.P.S.

Tobacco Reporting and Progress System

[Need Help?](#)



# The Evaluators' and Director's View

T.R.A.P.S. OTC-Director

FY2016-2017

Dashboard

Activities

Surveys

Data

Help

Robert.McMillen

## Announcements

Quotes Please 2/28/2017

We are in the process of writing our six month report and want to hear from you. Please write a sentence or two describing why your work is meaningful to you and how you feel it positively impacts the citizens of Mississippi. Please send to Anne Buffington at [anne.buffington@ssrc.msstate.edu](mailto:anne.buffington@ssrc.msstate.edu). Thanks!

Holiday Schedule 12/20/2016

We will be closing the window for data entry on Friday January 6th. At that time, all reporting and uploading for the first six months of the fiscal year should be reflected in the TRAPS system. Our university will be closed beginning December 21st and will reopen on Tuesday January 3rd. We will have limited availability during that time, so please let us know if you have any questions prior to tomorrow. Have a wonderful holiday season! Anne and Colleen

TRAPS ISSUE - RESOLVED 12/13/2016

Thanks to our wonderful IT/Developers, TRAPS is fully functional once again. ~ Anne & Colleen

ALERT - TRAPS ISSUE 12/13/2016

ALERT - TRAPS is having some technical issues. Please do not upload or download any documents until it has been resolved. It appears to be a disk space issue and our IT/Developer team is working on the solution.

## IQH

### Director Contact Information

Director

Pamela Lockett

## Operations

B 10. Database Administration - monthly

B 12. Referrals

**B 13. Electronic Health Referral Project**

These activities will be reported and maintained via the T.R.A.P.S. Online Reporting System, monthly.

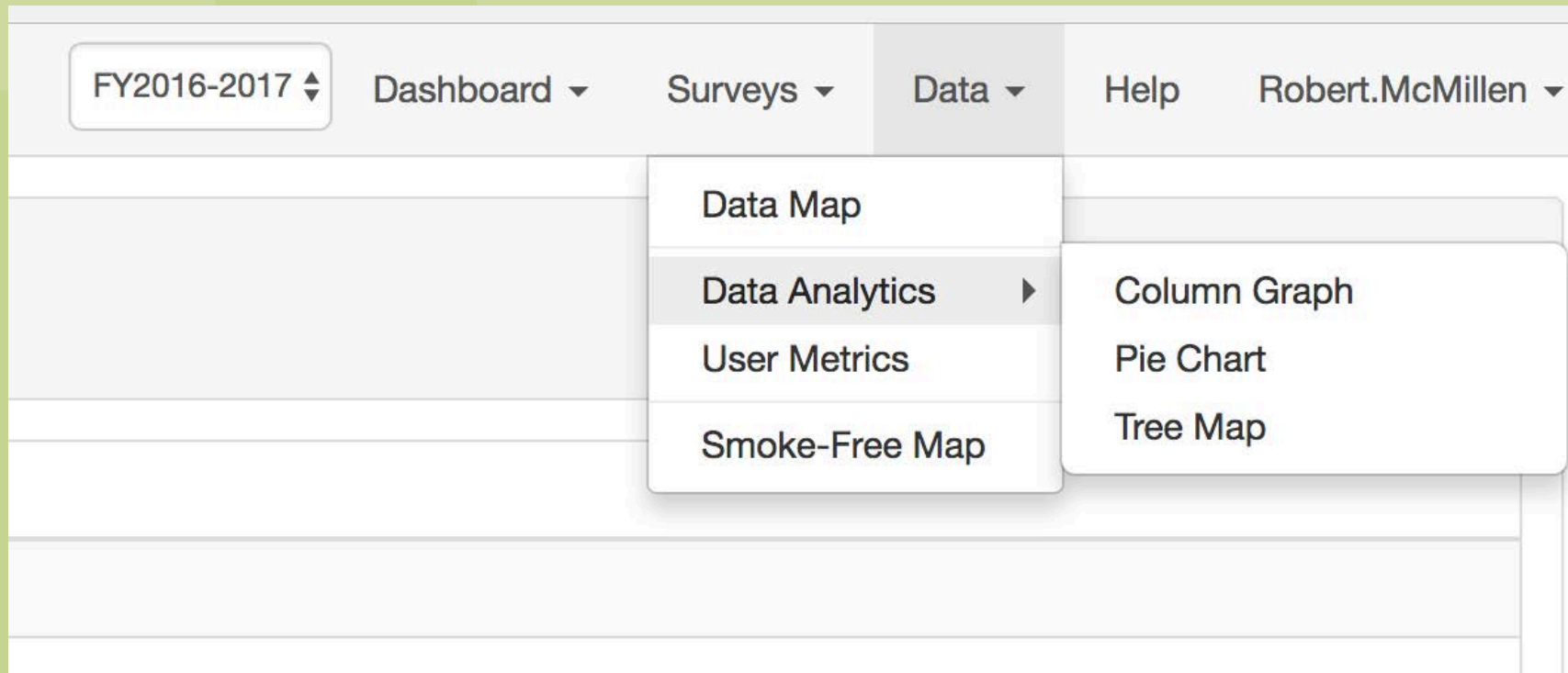
#### Files:

- [Electronic Health Referral Monthly ReportJanuary2017.docx](#)
- [Electronic Health Referral Project August 2016.docx](#)
- [Electronic Health Referral Project Dec 2016.docx](#)
- [Electronic Health Referral Project July 2016.docx](#)
- [Electronic Health Referral Project Nov 2016.docx](#)
- [Electronic Health Referral Project Oct 2016.docx](#)
- [Electronic Health Referral Project September 2016.docx](#)

B 14. Sustainability

B 1a. Call Volume Report - monthly

# Visualizing Grantee's Activities



Data Collection

Fiscal Year

Time Filter

Coalition Events

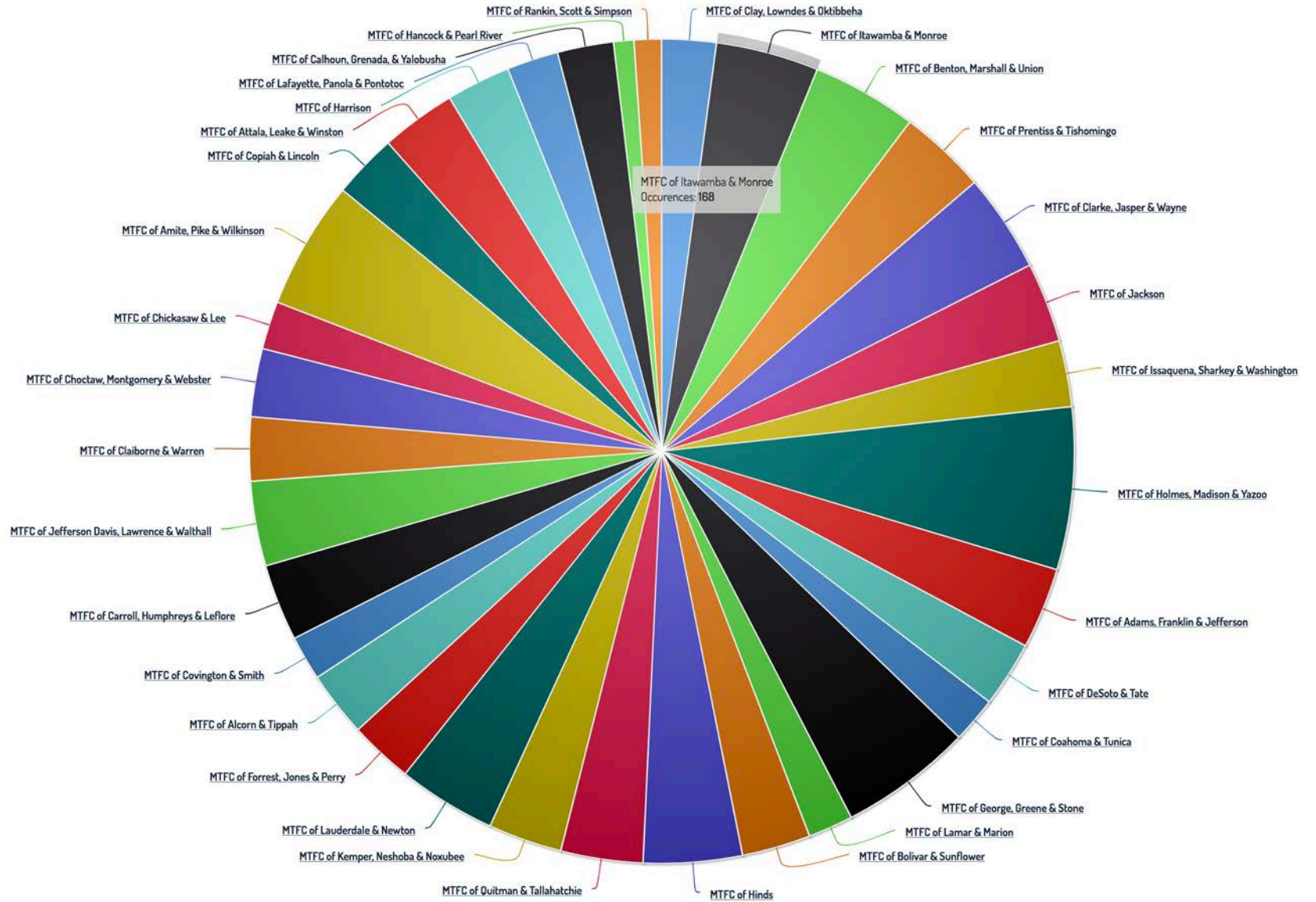
FY2016-2017

Yearly

Submit

Total: 4176

### COALITION EVENTS





Data Collection

Fiscal Year

Time Filter

Coalition Events

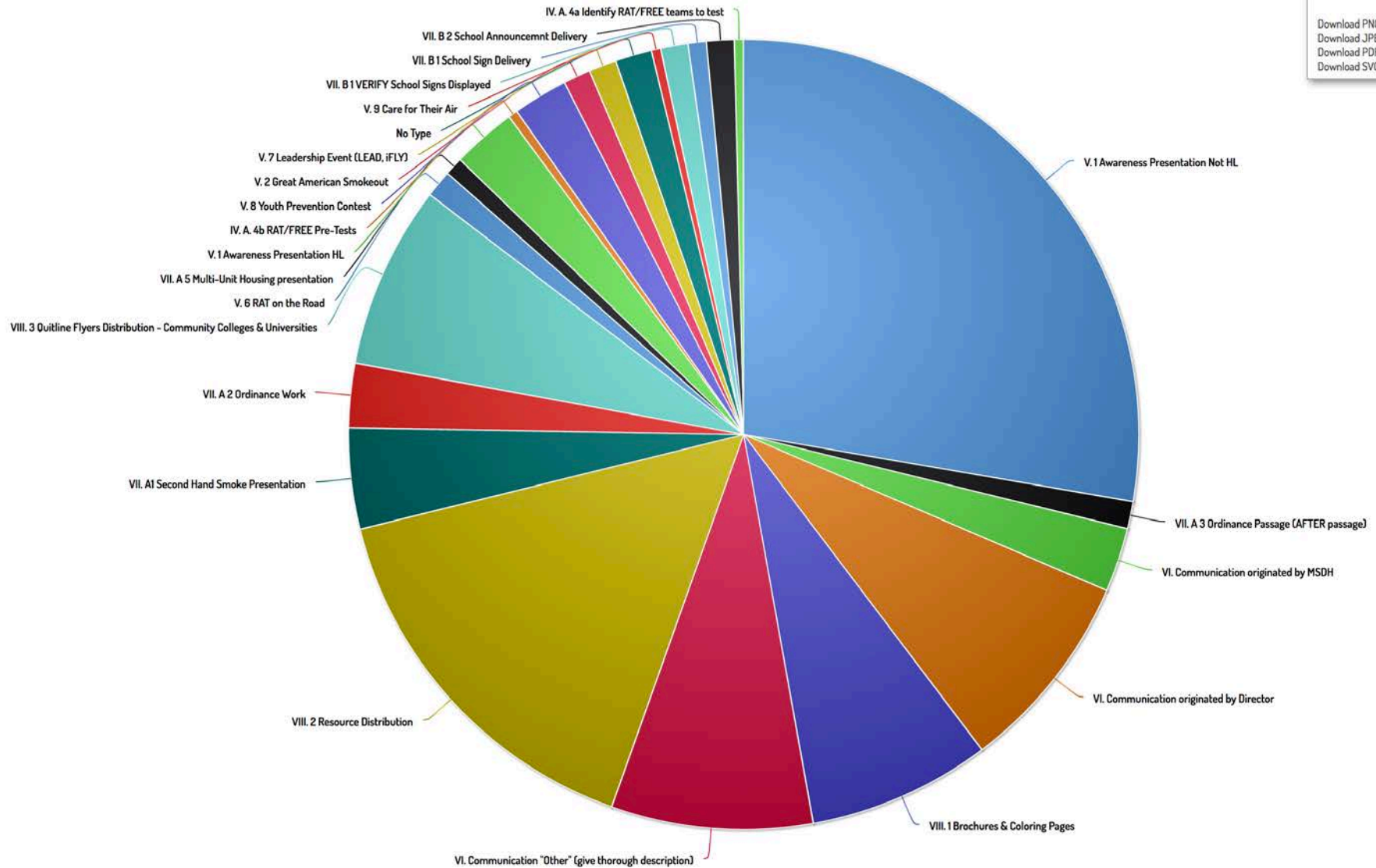
FY2016-2017

Yearly

Submit

Total: 267

### COALITION EVENTS MTFC of Holmes, Madison & Yazoo



Print chart

- Download PNG image
- Download JPEG image
- Download PDF document
- Download SVG vector image



**Ethel City Hall**  
Main Street, Ethel, MS

---

**V. 1 Awareness** 12/10/2016  
**Presentation Not HL**

---

MTFC of Attala, Leake & Winston

**Event Category**  
General Awareness

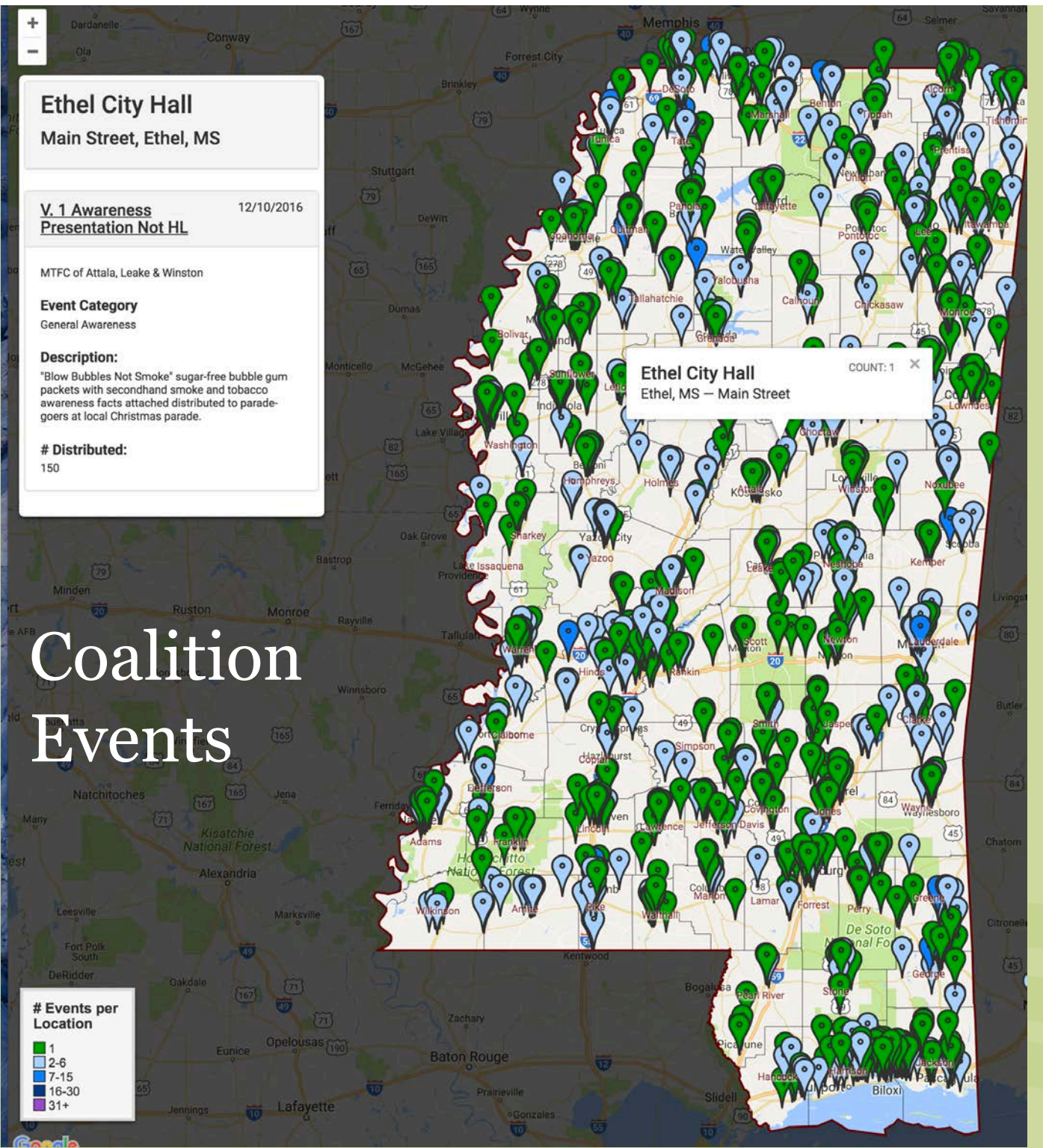
**Description:**  
"Blow Bubbles Not Smoke" sugar-free bubble gum packets with secondhand smoke and tobacco awareness facts attached distributed to parade-goers at local Christmas parade.

**# Distributed:**  
150

# Coalition Events

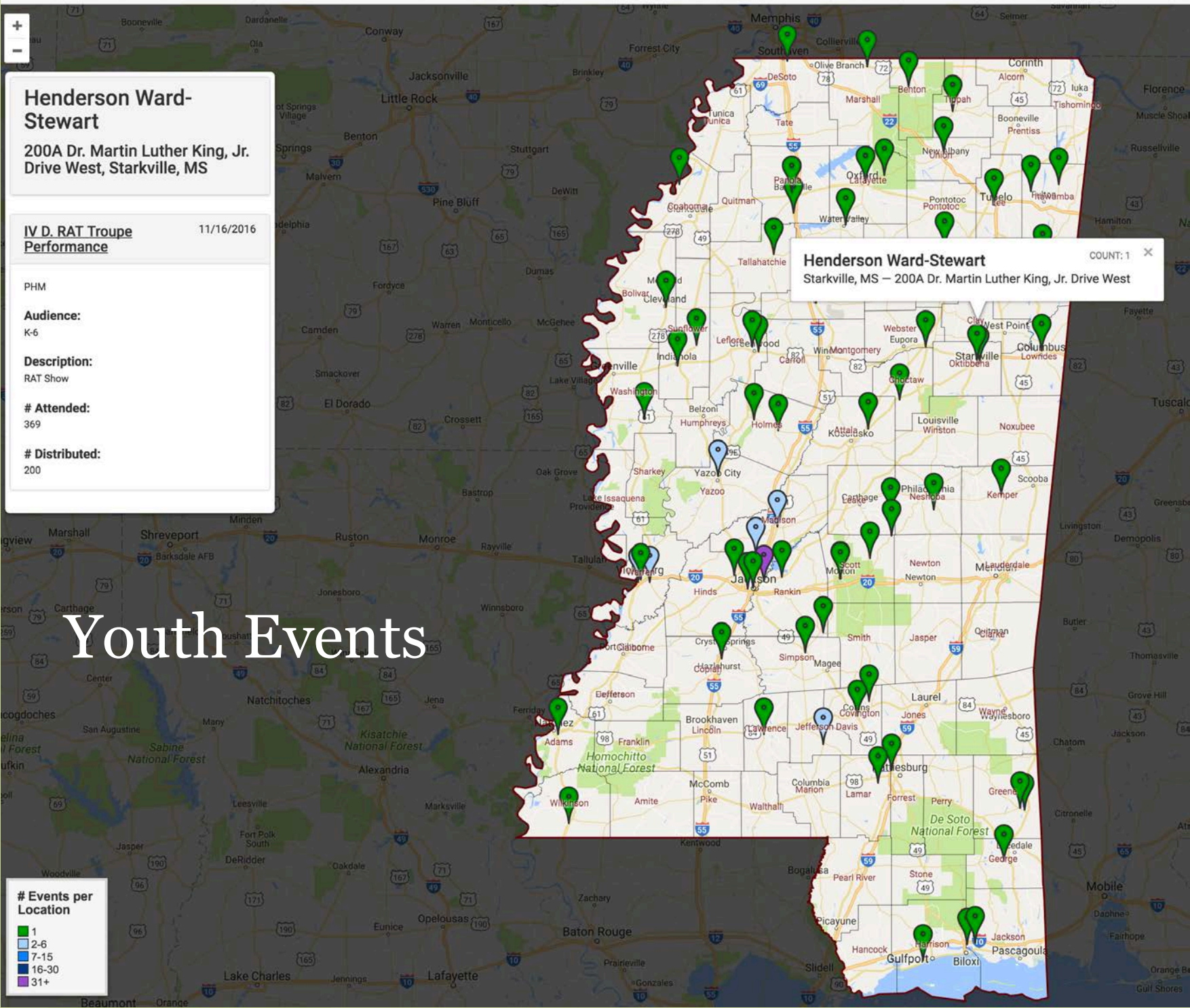
**# Events per Location**

- 1 (Green)
- 2-6 (Light Blue)
- 7-15 (Blue)
- 16-30 (Dark Blue)
- 31+ (Purple)



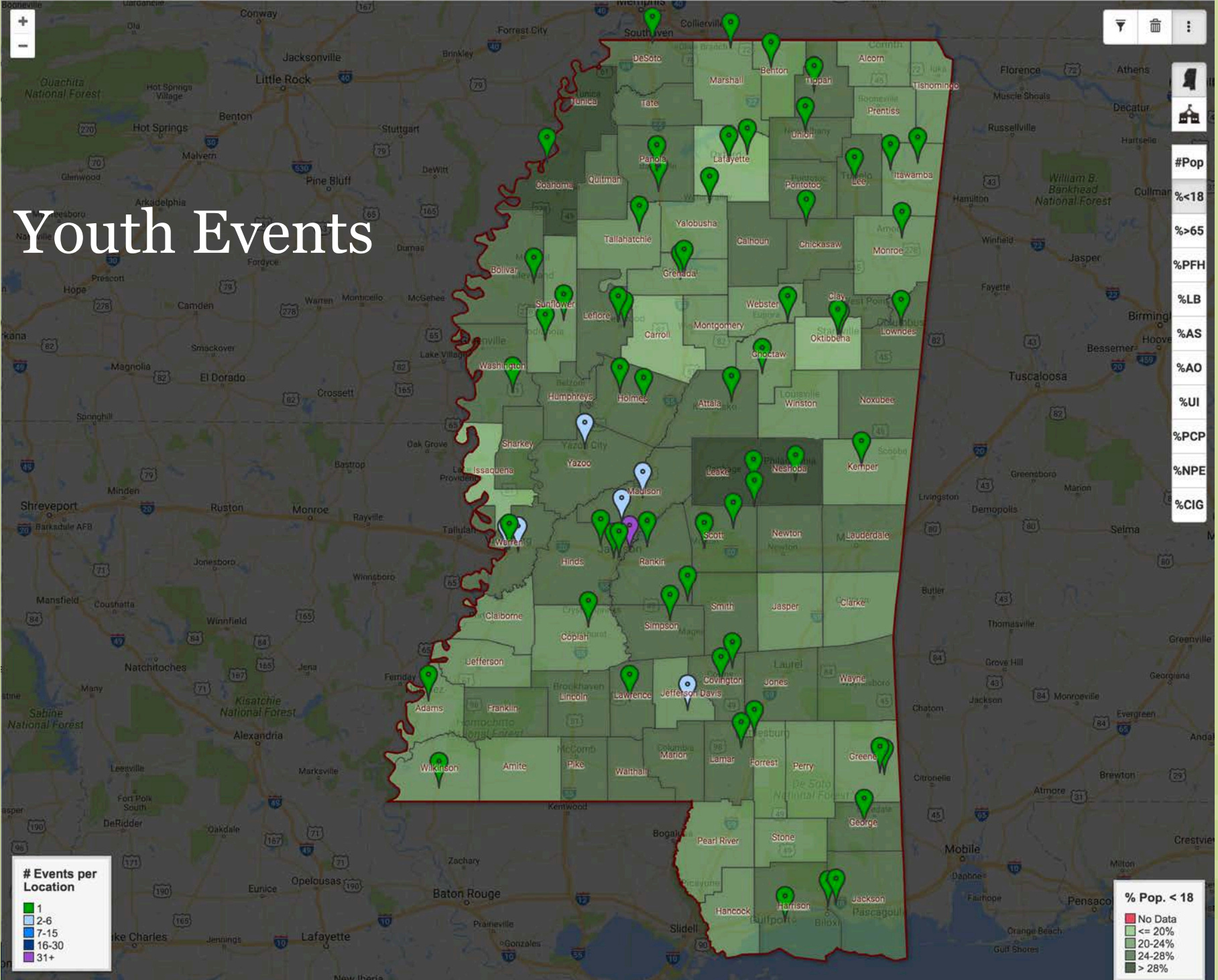
**Ethel City Hall**  
Ethel, MS – Main Street

COUNT: 1



# Youth Events

# Youth Events



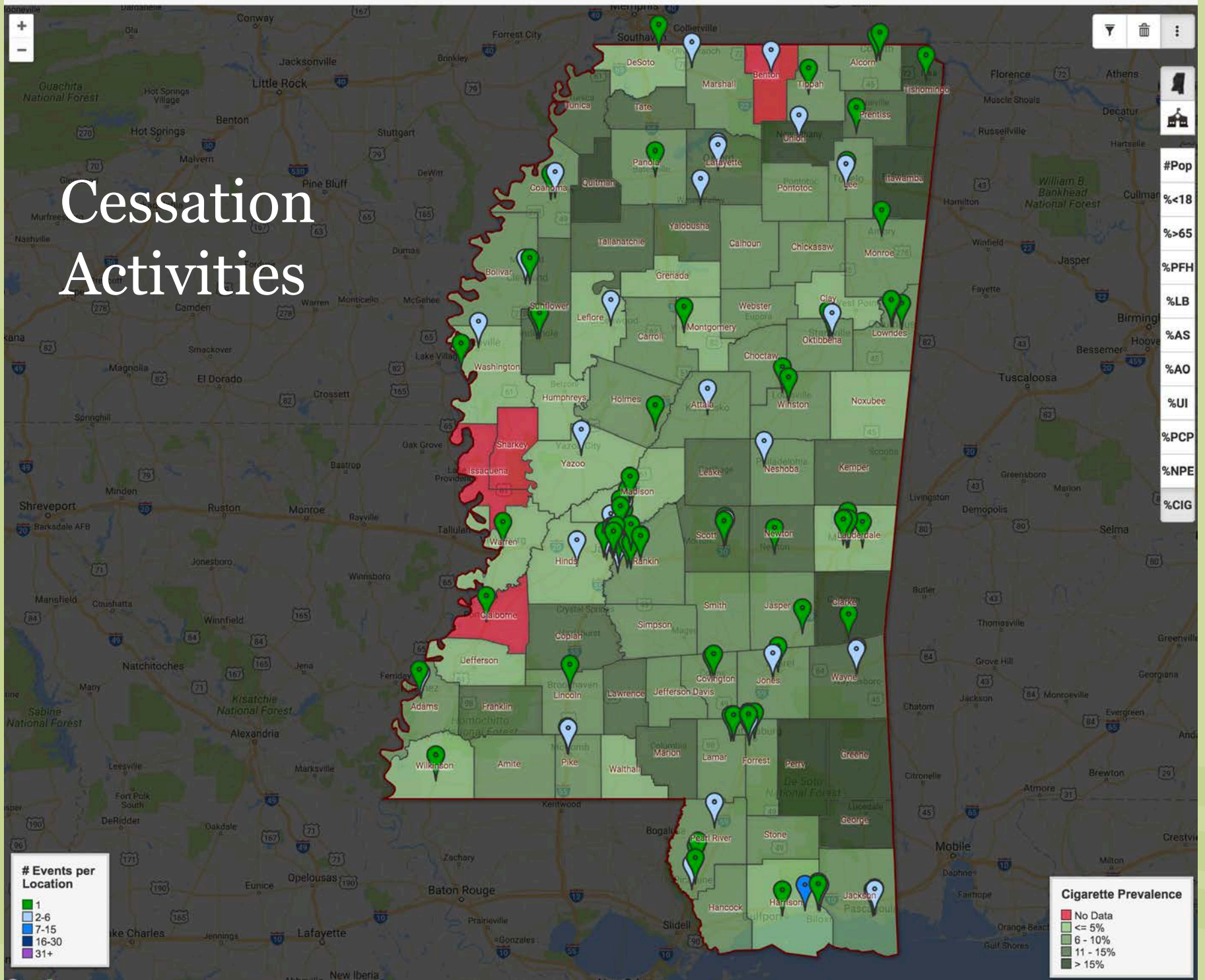
**# Events per Location**

- 1
- 2-6
- 7-15
- 16-30
- 31+

**% Pop. < 18**

- No Data
- <= 20%
- 20-24%
- 24-28%
- > 28%

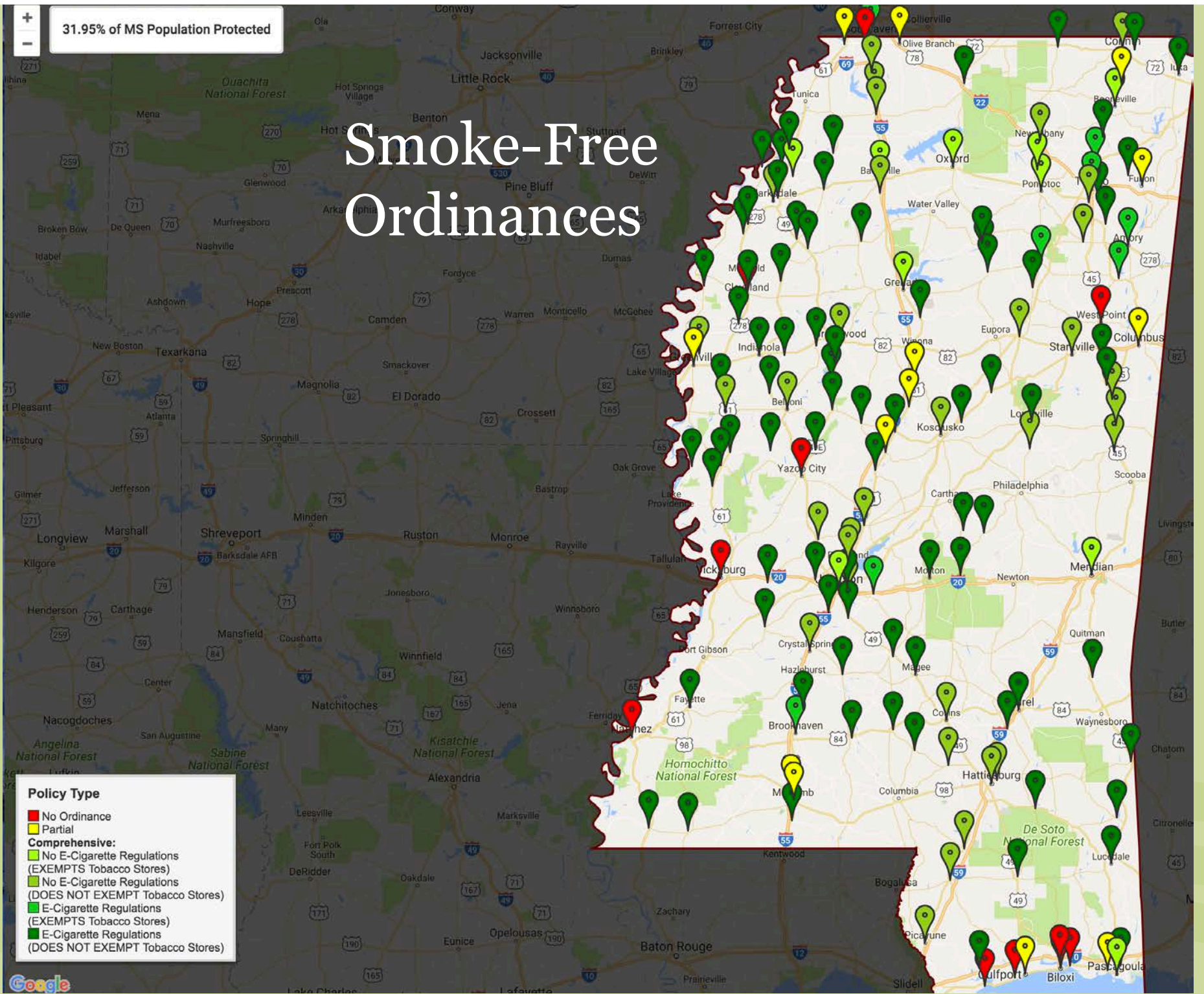
# Cessation Activities



31.95% of MS Population Protected

# Smoke-Free Ordinances

- Policy Type**
- No Ordinance
  - Partial
  - Comprehensive:**
    - No E-Cigarette Regulations (EXEMPTS Tobacco Stores)
    - No E-Cigarette Regulations (DOES NOT EXEMPT Tobacco Stores)
    - E-Cigarette Regulations (EXEMPTS Tobacco Stores)
    - E-Cigarette Regulations (DOES NOT EXEMPT Tobacco Stores)



# User Metrics

T.R.A.P.S. OTC-Director

FY2016-2017

Dashboard

Surveys

Data

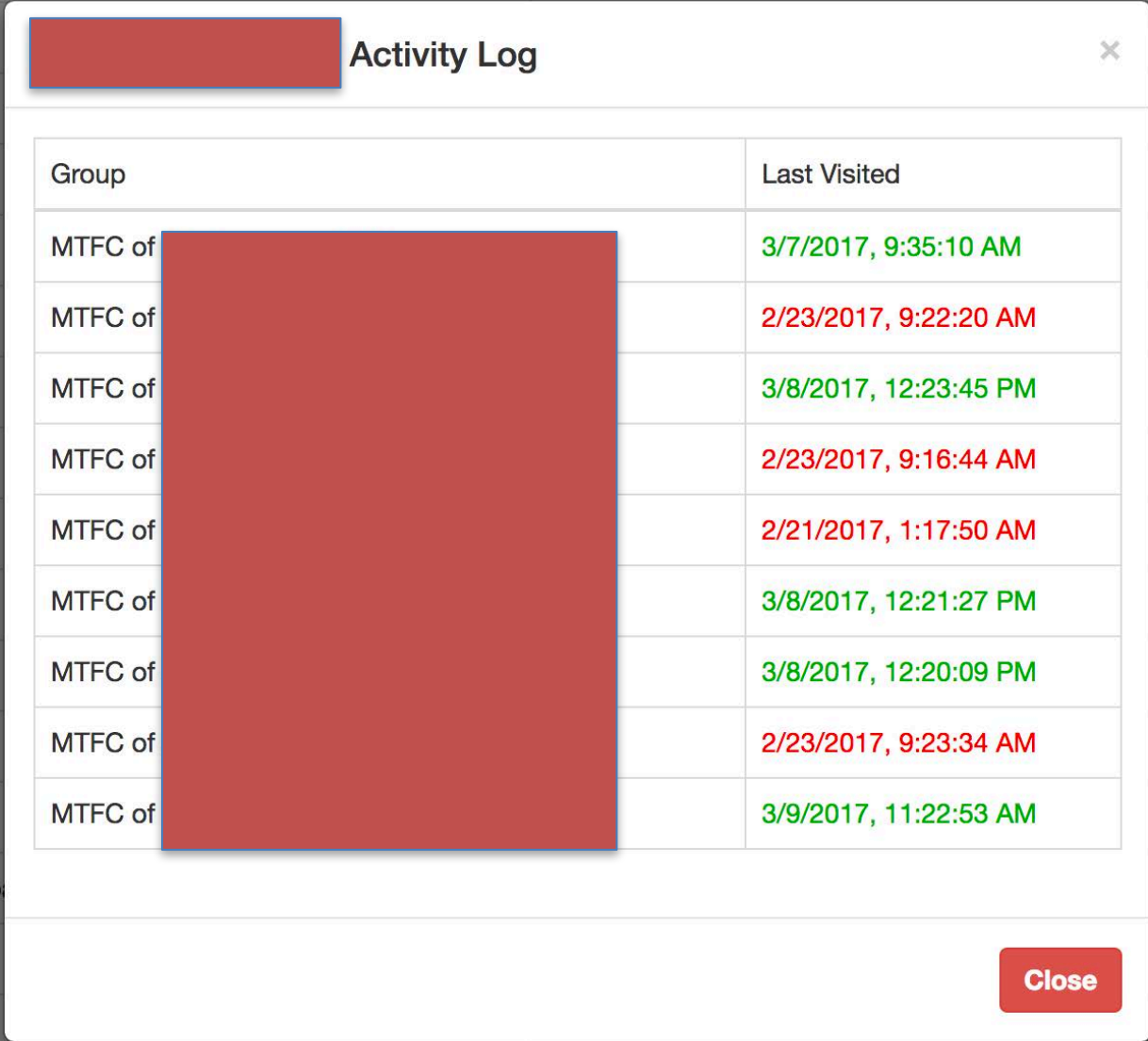
Help

Robert.McMillen

## User Log

Username	Role	Region	Group	Group Title	Last Logged In	Last Active
	OTC-Director	--	Cessation, Coalition, Statewide, Youth	--	3/3/2017, 1:23:26 PM	3/3/2017, 1:25:32 PM
	Grantee	Southern	Coalition	MTFC of Hancock & Pearl River	3/1/2017, 11:06:27 AM	1/3/2017, 1:40:06 PM
	Grantee	--	Statewide	District 6 Community Health Director	12/12/2016, 3:44:07 PM	--
	Grantee	Southern	Coalition	MTFC of George, Greene & Stone	3/3/2017, 10:54:27 AM	1/4/2017, 10:48:31 AM
	Grantee	--	Statewide	District 6 Community PH Nurse	--	--
	Grantee	--	Statewide	District 2 Community PH Nurse	2/15/2017, 9:19:53 AM	2/15/2017, 9:55:39 AM
	Grantee	Southern	Coalition	MTFC of Jackson	3/2/2017, 9:40:01 AM	3/1/2017, 1:53:17 PM
	Grantee	--	Statewide	District 4 Community PH Nurse	2/24/2017, 2:06:00 PM	2/24/2017, 2:07:14 PM
	Grantee	North-Central	Coalition	MTFC of Clay, Lowndes & Oktibbeha	3/2/2017, 4:13:24 PM	--
	Grantee	--	Statewide	Family Physicians	2/27/2017, 8:47:09 AM	--
	Grantee	--	Statewide	District 5 Community PH Nurse	2/22/2017, 4:23:58 PM	2/22/2017, 4:24:36 PM
	Grantee	--	Youth	PHM	2/28/2017, 3:06:07 PM	2/24/2017, 2:40:10 PM
	Grantee	Southern	Coalition	MTFC of Jefferson Davis, Lawrence & Walthall	2/28/2017, 2:53:40 PM	1/9/2017, 2:52:35 PM
	Grantee	--	Statewide	District 4 Community Health Director	3/1/2017, 12:07:07 PM	2/1/2017, 12:18:07 PM
	OTC-Monitor	--	Cessation, Statewide, Youth	--	2/1/2017, 12:24:11 PM	2/1/2017, 12:27:13 PM
	Project-Officer		Youth		1/24/2017, 12:06:29 PM	1/24/2017, 8:57:08 AM
	Grantee	--	Statewide	District 9 Community Health Director	12/12/2016, 3:33:32 PM	--
	Project-Officer	North-Central	Coalition	--	3/1/2017, 8:21:36 AM	2/28/2017, 10:32:27 AM

# Project Officer (Coalitions) User Metrics



The image shows a screenshot of an "Activity Log" window. The window title is "Activity Log" and it has a close button (X) in the top right corner. The table below lists user activity with columns for "Group" and "Last Visited". A large red rectangular redaction box covers the "Group" column for all rows. The "Last Visited" column contains dates and times, with green text indicating recent activity and red text indicating older activity.

Group	Last Visited
MTFC of [Redacted]	3/7/2017, 9:35:10 AM
MTFC of [Redacted]	2/23/2017, 9:22:20 AM
MTFC of [Redacted]	3/8/2017, 12:23:45 PM
MTFC of [Redacted]	2/23/2017, 9:16:44 AM
MTFC of [Redacted]	2/21/2017, 1:17:50 AM
MTFC of [Redacted]	3/8/2017, 12:21:27 PM
MTFC of [Redacted]	3/8/2017, 12:20:09 PM
MTFC of [Redacted]	2/23/2017, 9:23:34 AM
MTFC of [Redacted]	3/9/2017, 11:22:53 AM

Close



# key findings

ms tobacco free coalitions (mtfc's)



◆ **703,188** ◆  
*people impacted*

— **34 MTFC'S** —  
WITH A PRESENCE IN  
EACH OF THE 82 COUNTIES

“ It is a privilege to work so closely with the community in efforts to reduce tobacco-related diseases for generations to come. ”

LEIGH LAMKIN | MTFC DIRECTOR, ATTALA, LEAKE AND WINSTON COUNTIES

**3,171 General Awareness**

Activities with 441,851 in attendance

**1,759 Advocacy & Policy**

Activities with 92,039 people impacted

— **1,058** —  
**CESSATION**  
ACTIVITIES WITH 62,781  
PEOPLE IMPACTED

◆ **994** ◆  
*communication efforts*



# key findings

state-wide partners

**19,436 people impacted**

## The University of Southern Mississippi Institute for Disability Studies IDS

38 monthly education classrooms, leadership meetings, community expos/ 957 youth in attendance

*“Great platform for collaboration.”*

- MTFC MEMBER SURVEY

## Mississippi Academy of Family Physicians Foundation

66 education, awareness activities, chart reviews, technical assistance/ 6,720 people reached

## The Mississippi Nurses Foundation

38 awareness and programmatic activities and trainings - 3,789 people impacted

*“I look at my work as planting seeds. Those seeds are planted in the hearts and minds of our Tobacco Champions and Co-Champions, the front-line responders in the fight to educate, motivate and empower tobacco users to quit. If I can keep the work and the challenge before them, then they will keep it before our patients.”*

WAYNE MILEY | MISSISSIPPI PRIMARY HEALTHCARE ASSOCIATION

## The Mississippi Chapter of the American Academy of Pediatrics

93 continuing education presentations, trainings, Lunch and Learns, community advocacy/ 6,016

*“The Mississippi Nurses Foundation is playing a pivotal role in educating nurses and nursing students about the impact they can have on their patients’ decisions to stop using tobacco products.”*

TENNILLE HOWARD | MISSISSIPPI NURSES FOUNDATION

## The Mississippi Primary Healthcare Association

117 awareness, capacity building, chart reviews, Lunch and Learn, cessation promotion/ 588

## The Mississippi Rural Health Association

26 activities through October 2015/ 1,366 in attendance

*“Always has informative speakers and so very pleasant to be around. She loves her job and it shows.”*

- MTFC MEMBER SURVEY



# For More Information

- Visit [mstobacodata.org](http://mstobacodata.org)