

Mississippi Tobacco Free Coalition Quarterly Training Data Presentation and Discussion



Emily McClelland, M.S.
Senior Research Associate
6 December 2022



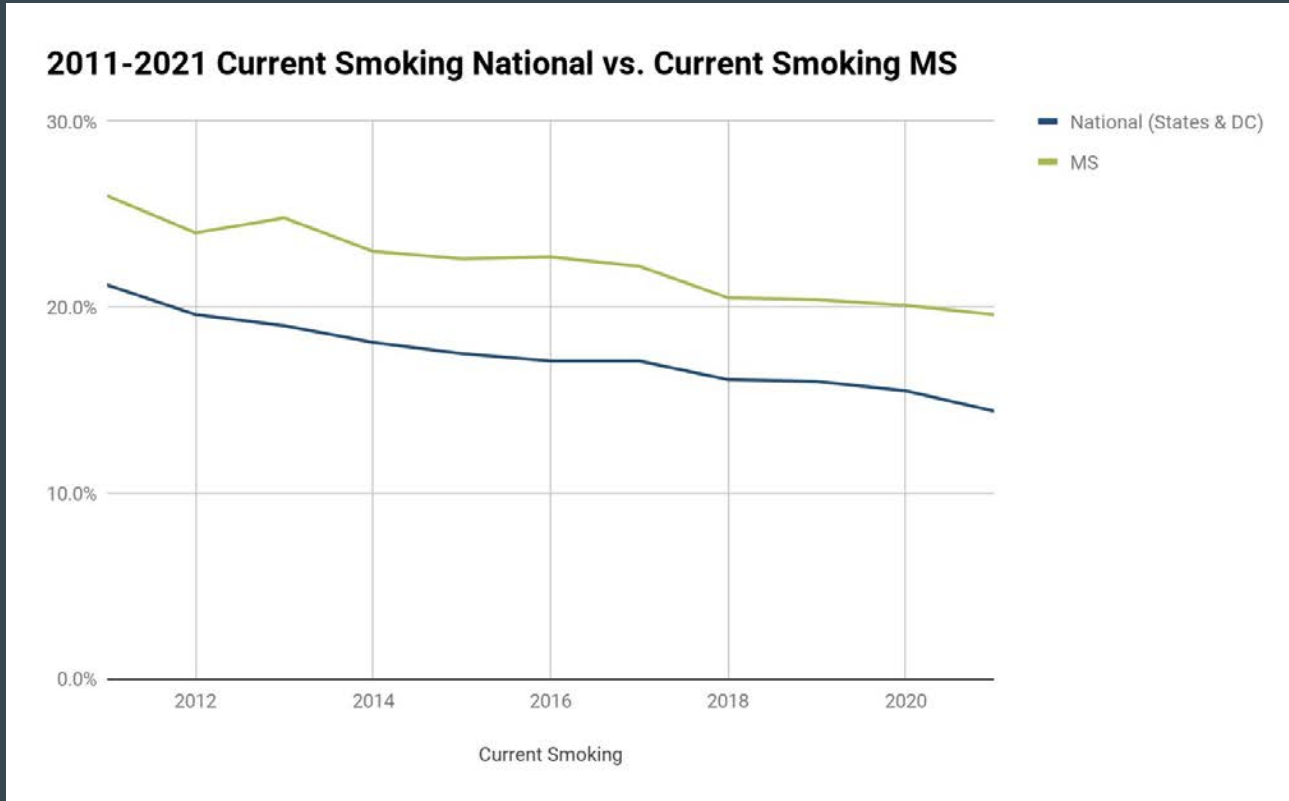
MISSISSIPPI STATE UNIVERSITY™
SOCIAL SCIENCE RESEARCH CENTER



Overview

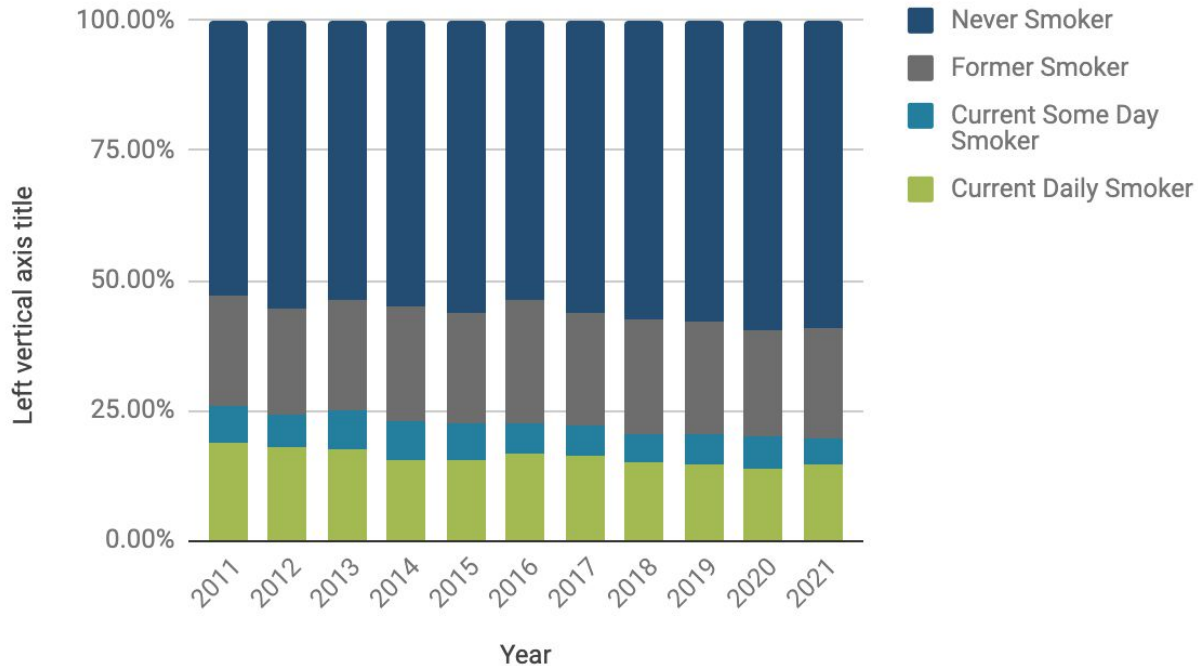
- Adult Use Trends
- Young Adult Use Trends
- Youth Use Trends
- Marijuana Use

Adult Current Smoking Trend (BRFSS)

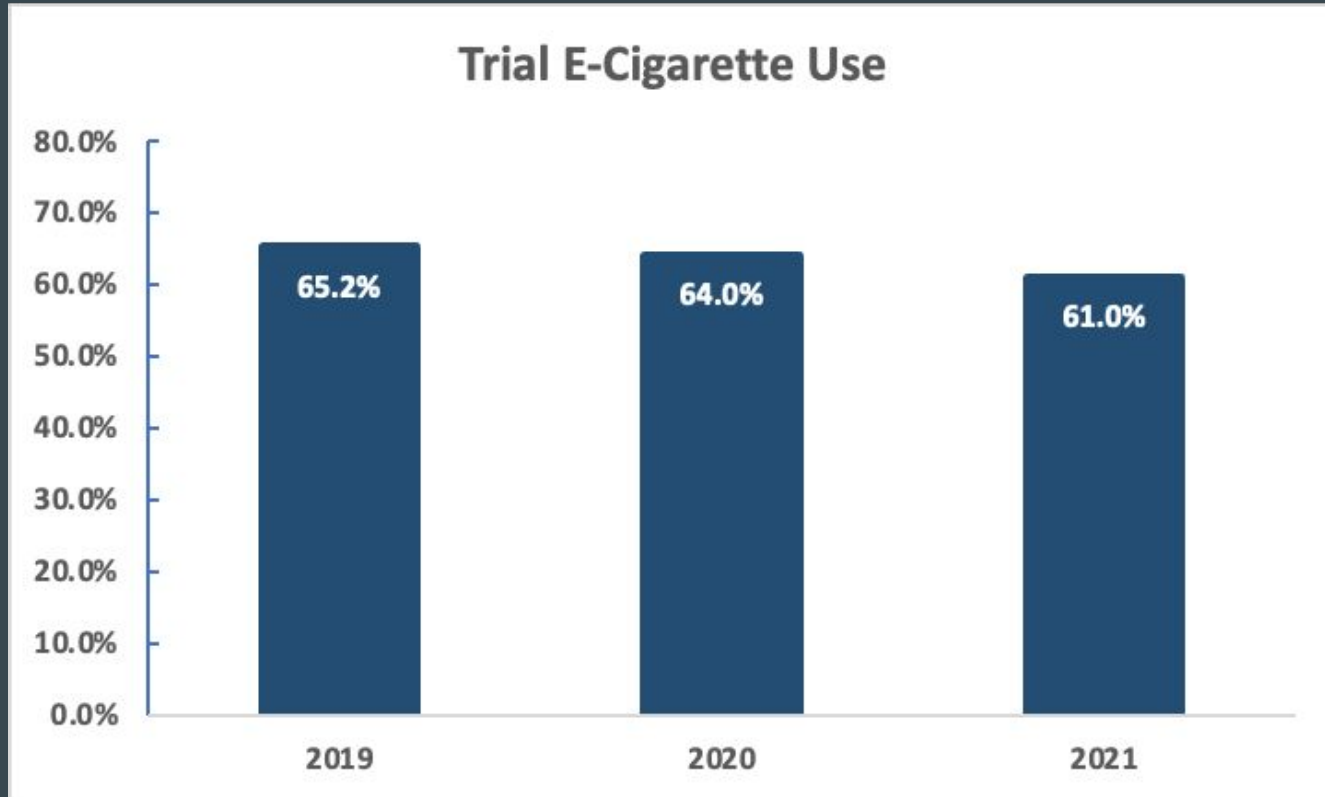


Adult Current Smoking Trend (BRFSS)

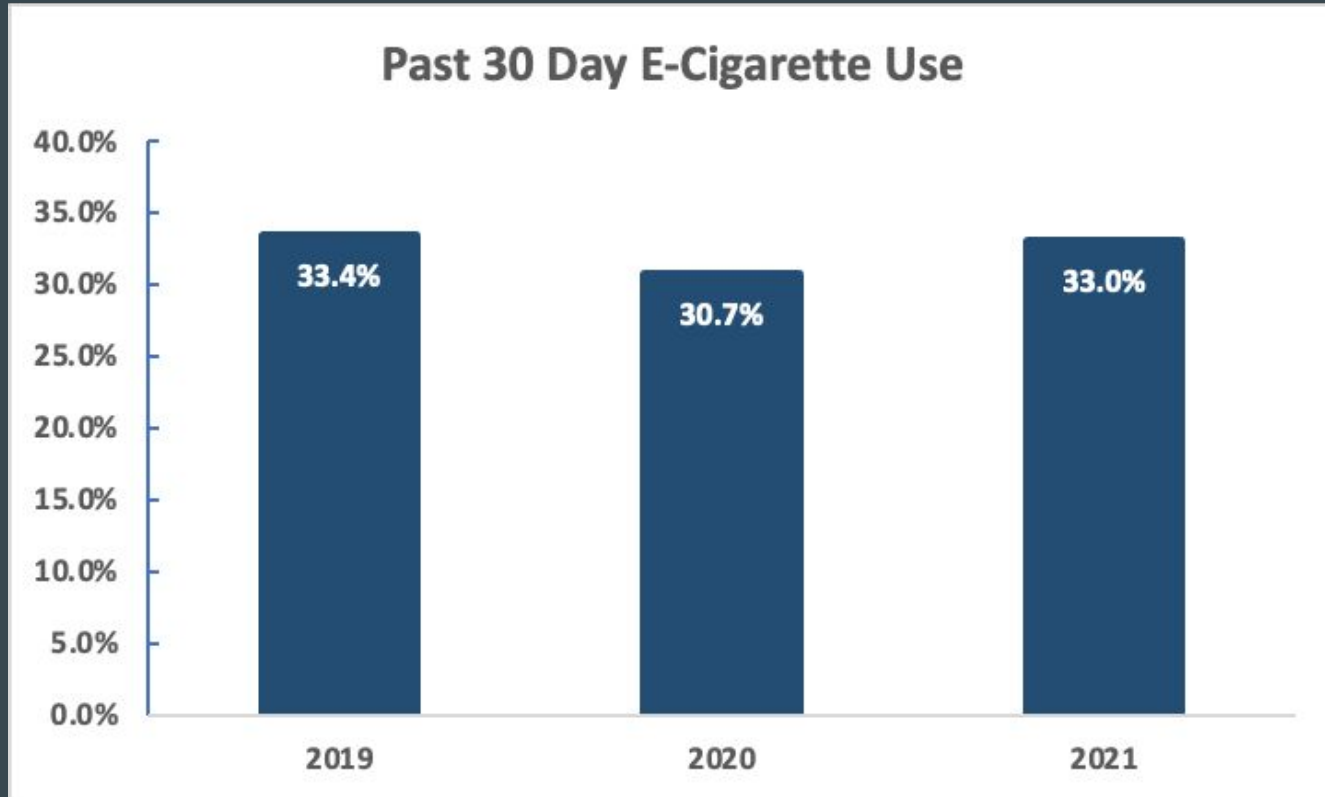
2011-2021 Four Level Smoking Status



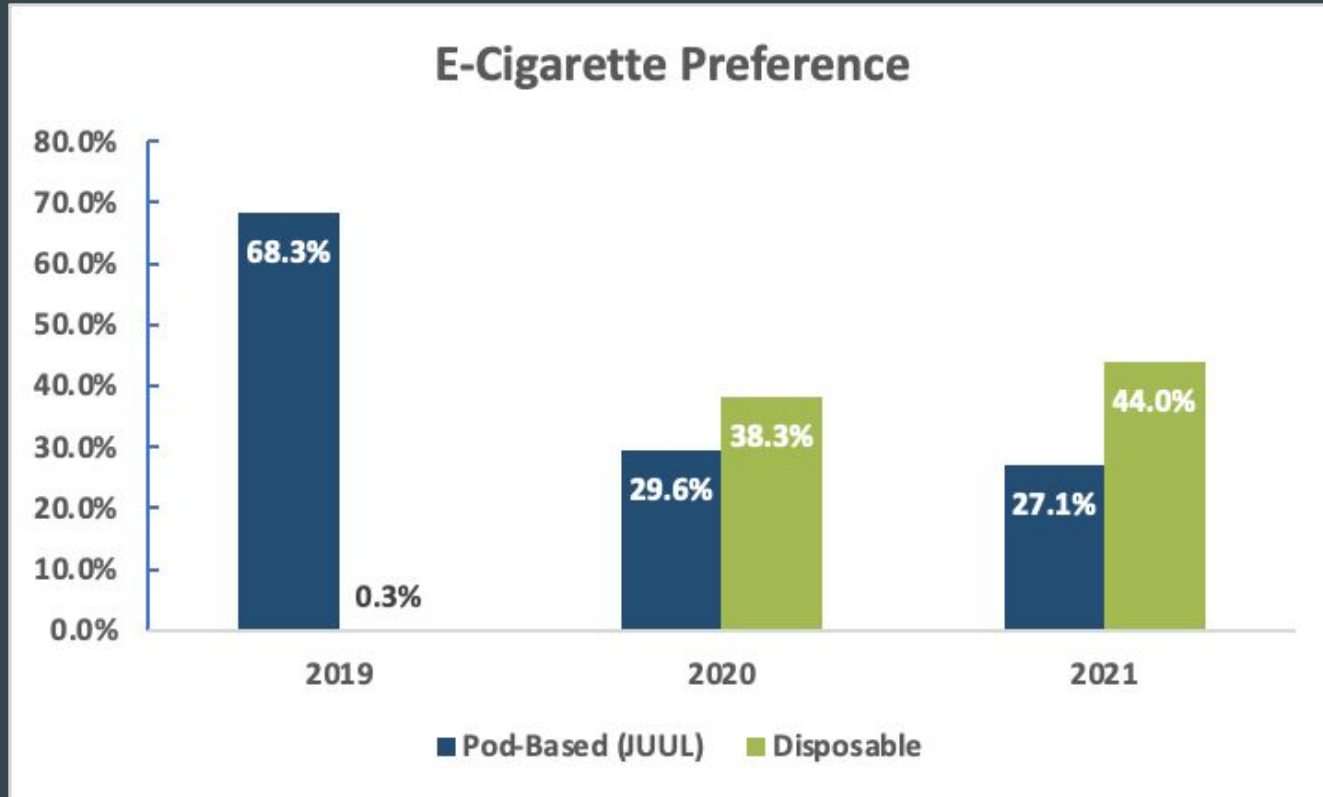
Young Adult E-Cigarette Trends (University Data Merged)



Young Adult E-Cigarette Trends (University Data Merged)

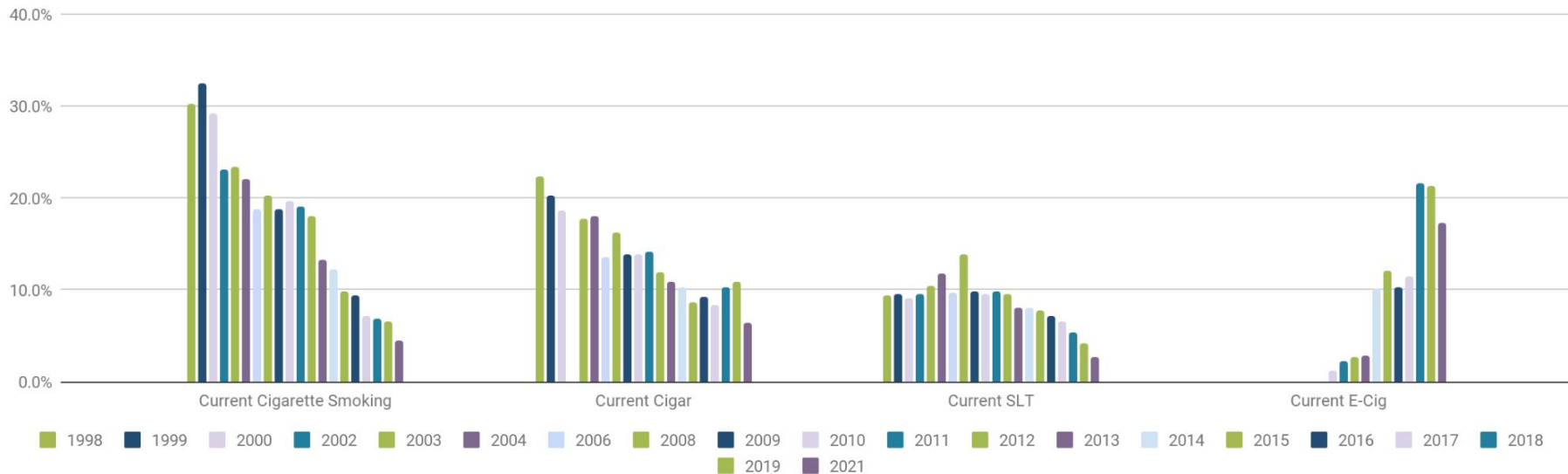


Young Adult E-Cigarette Trends (University Data Merged)



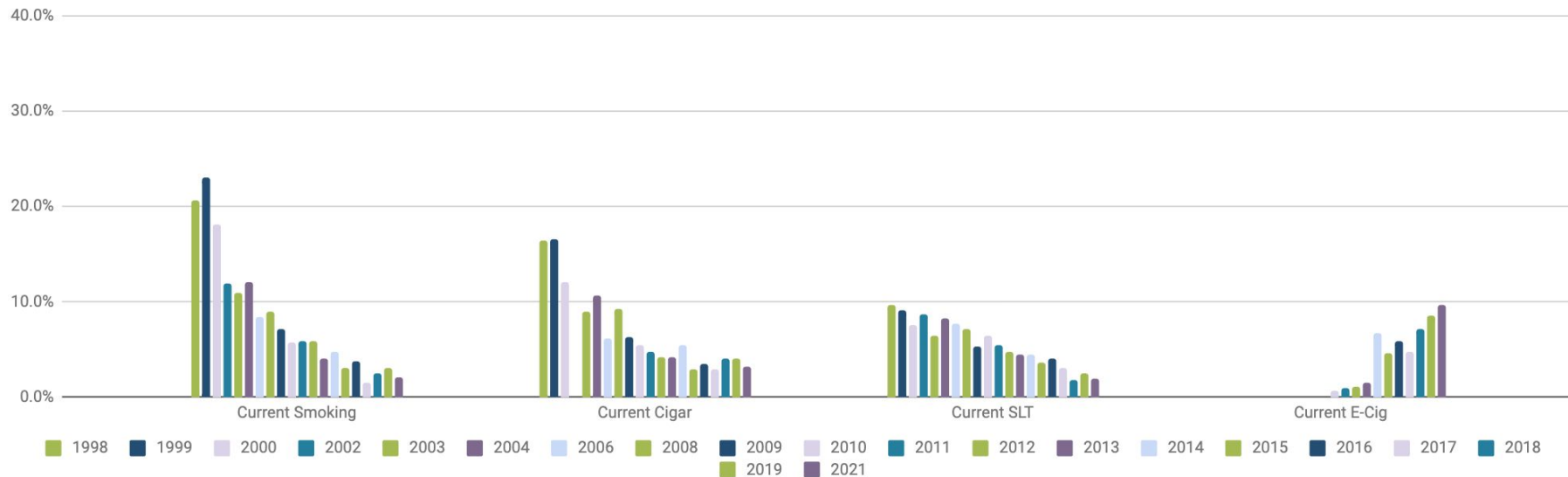
MS HS Youth Tobacco Use 1998-2021

High School Past 30-Day Use, 1998-2021



MS MS Youth Tobacco Use 1998-2021

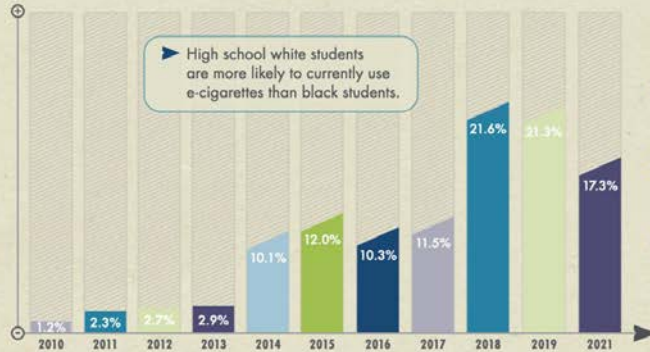
Middle School Past 30-Day Use, 1998-2021



current electronic cigarette use

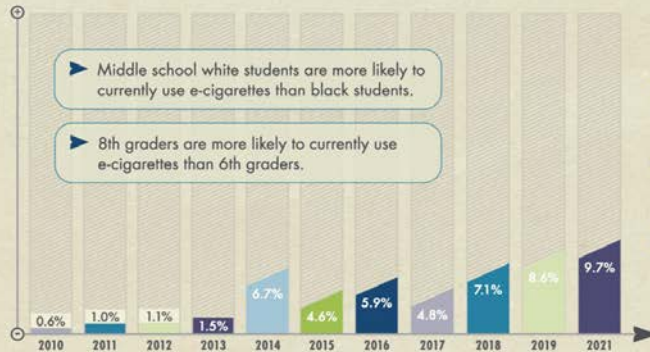
MISSISSIPPI PUBLIC SCHOOLS

HIGH SCHOOLS {2010-2021}



- * In 2021, **22,327 Mississippi public high school students** had used e-cigarettes on at least one of the past 30 days.
- * The prevalence of current e-cigarette use has **increased by 1,342%** since 2010, leading to 20,778 more young e-cigarette users.
- * In the past two years, the prevalence of current e-cigarette use **has not changed significantly**.

MIDDLE SCHOOLS {2010-2021}



- * In 2021, **10,850 Mississippi public middle school students** had used e-cigarettes on at least one of the past 30 days.
- * The prevalence of current e-cigarette use has **increased by 1,517%** since 2010, leading to 10,179 more young e-cigarette users.
- * In the past two years, the prevalence of current e-cigarette use **has not changed significantly**.

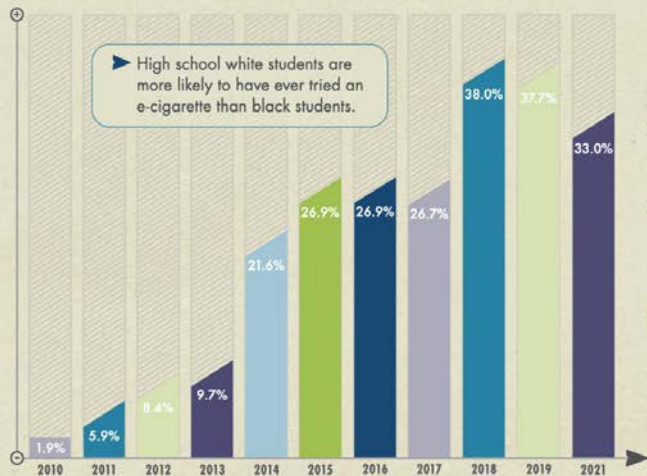
▶ Significant Demographic Differences

Changes between 2013 and 2014 in the wording and placement of questions about the use of e-cigarettes might have had an impact on reported use of these products.

ever tried an electronic cigarette

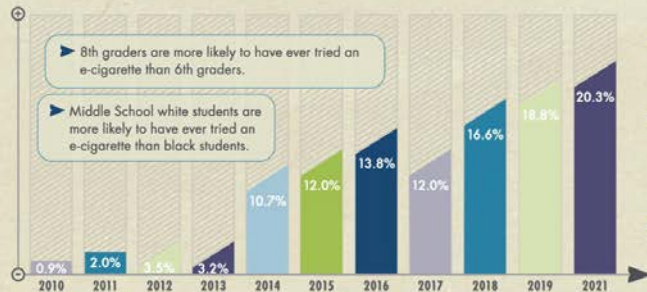
MISSISSIPPI PUBLIC SCHOOLS

HIGH SCHOOLS {2010-2021}



- * In 2021, **42,588 Mississippi public high school students** had tried at least one e-cigarette.
- * The prevalence of having ever tried an e-cigarette has **increased by 1,637%** since 2010, leading to 40,136 more high school students who have tried using e-cigarettes.
- * In the past two years, the prevalence of having ever tried using e-cigarettes **has not changed significantly**.

MIDDLE SCHOOLS {2010-2021}



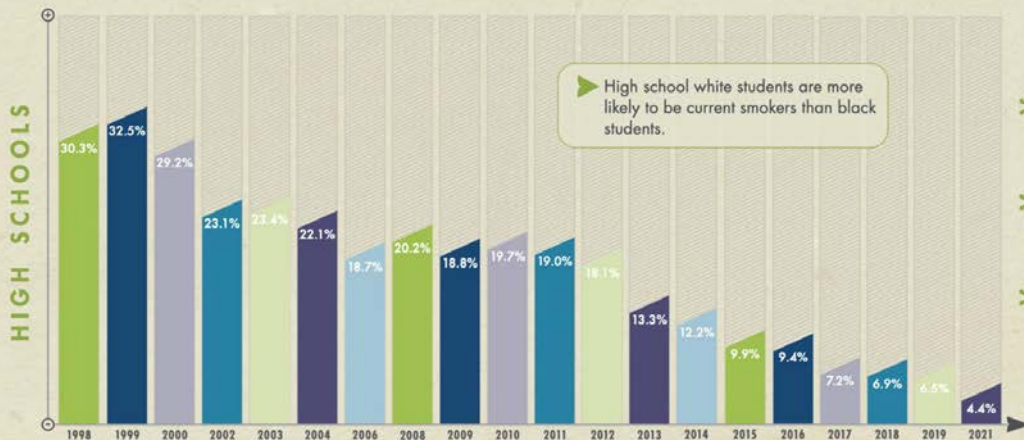
- * In 2021, **22,706 Mississippi public middle school students** had tried at least one e-cigarette.
- * The prevalence of having ever tried an e-cigarette has **increased by 2,156%** since 2010, leading to 21,699 more middle school students who have tried using e-cigarettes.
- * In the past two years, the prevalence of having ever tried using e-cigarettes **has not changed significantly**.

▶ Significant Demographic Differences

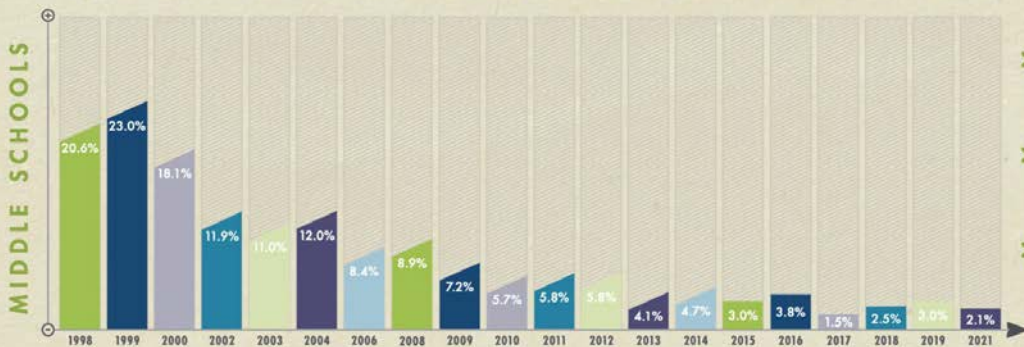
Changes between 2013 and 2014 in the wording and placement of questions about the use of e-cigarettes might have had an impact on reported use of these products.

current cigarette smoking

MISSISSIPPI PUBLIC SCHOOLS



- * In 2021, **5,678 Mississippi public high school students** had smoked cigarettes on at least one of the past 30 days.
- * The prevalence of current smoking has **decreased by 86%** since 1998, leading to 33,425 fewer young smokers.
- * In the past two years, the prevalence of current smoking **has not changed significantly**.

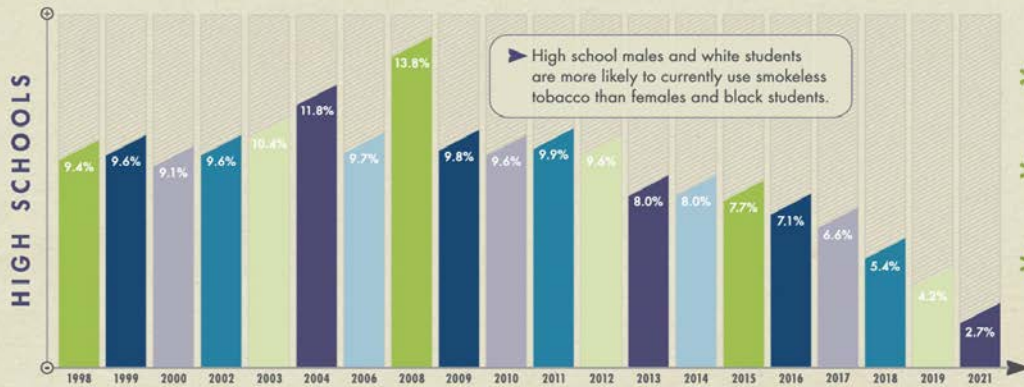


- * In 2021, **2,349 Mississippi public middle school students** had smoked cigarettes on at least one of the past 30 days.
- * The prevalence of current smoking has **decreased by 90%** since 1998, leading to 20,693 fewer young smokers.
- * In the past two years, the prevalence of current smoking **has not changed significantly**.

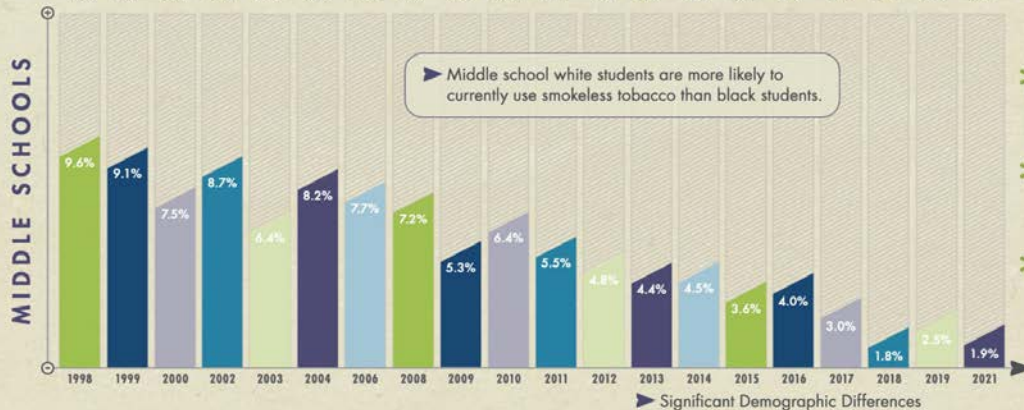
► Significant Demographic Differences

current smokeless tobacco use

MISSISSIPPI PUBLIC SCHOOLS



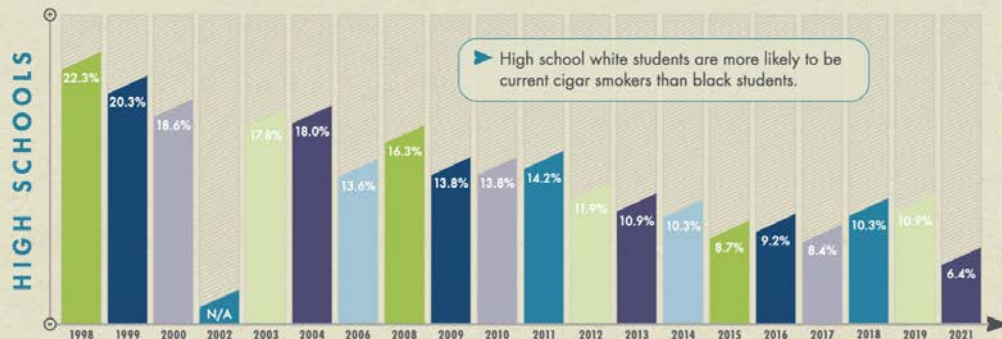
- * In 2021, 3,484 Mississippi public high school students had used SLT on at least one of the past 30 days.
- * The prevalence of current SLT use has **decreased by 71%** since 1998, leading to 8,647 fewer young SLT users.
- * In the past two years, the prevalence of current SLT use **has not changed significantly**.



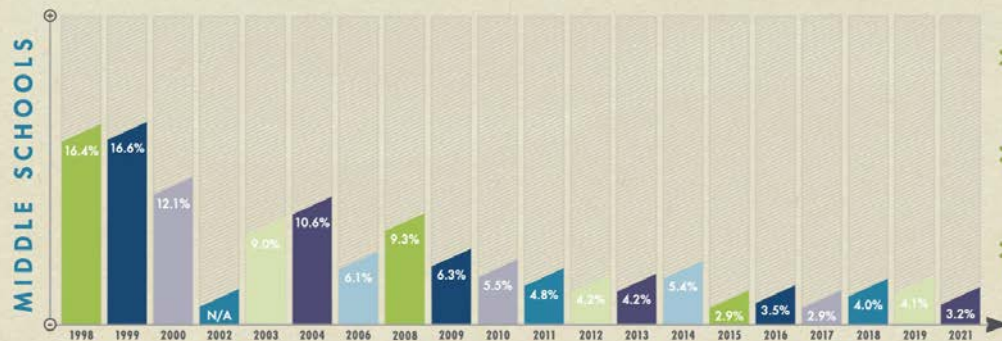
- * In 2021, 2,125 Mississippi public middle school students had used SLT on at least one of the past 30 days.
- * The prevalence of current SLT use has **decreased by 80%** since 1998, leading to 8,613 fewer young SLT users.
- * In the past two years, the prevalence of current SLT use **has not changed significantly**.

current cigar smoking

MISSISSIPPI PUBLIC SCHOOLS

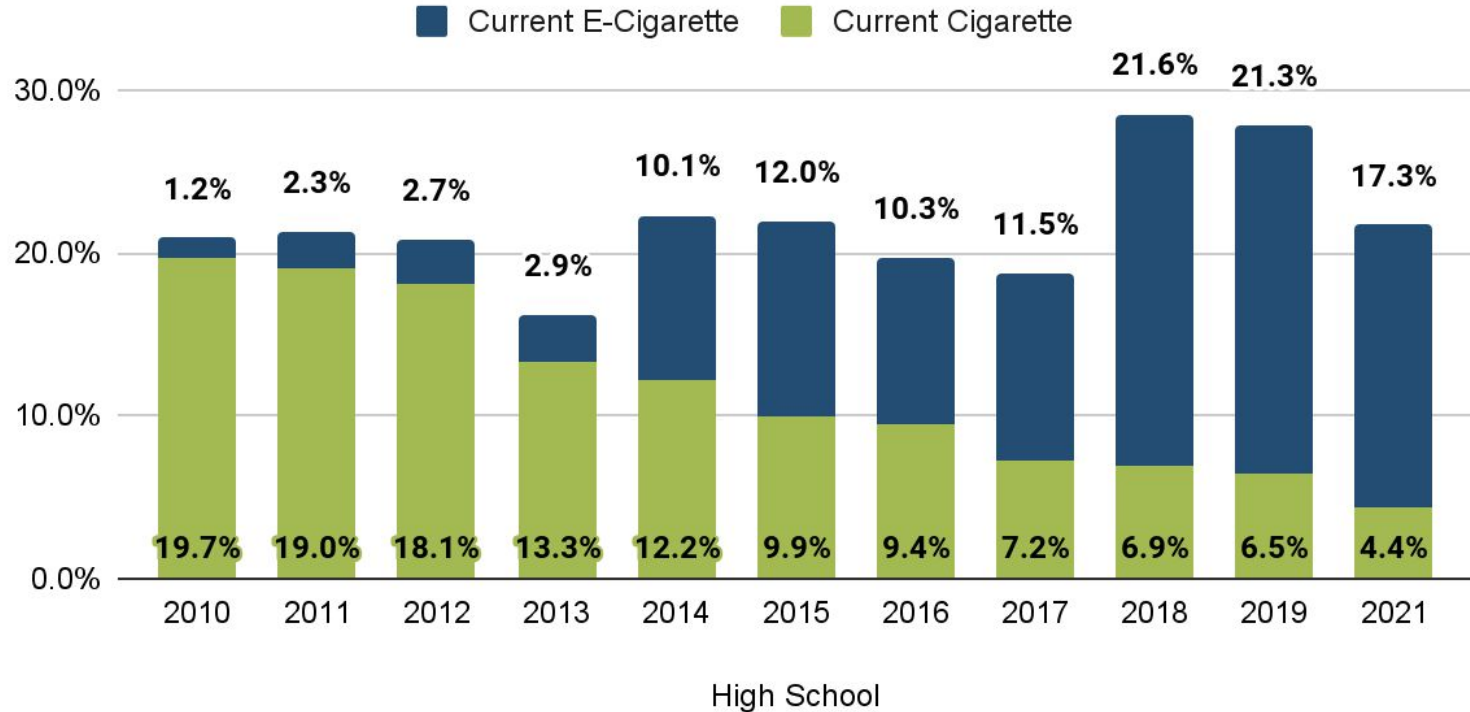


- * In 2021, **8,260 Mississippi public high school students** had smoked cigars on at least one of the past 30 days.
- * The prevalence of current cigar smoking has **decreased by 71%** since 1998, leading to 20,520 fewer young cigar smokers.
- * In the past two years, the prevalence of current cigar smoking **has changed significantly**.



- * In 2021, **3,579 Mississippi public middle school students** had smoked cigars on at least one of the past 30 days.
- * The prevalence of current cigar smoking has **decreased by 80%** since 1998, leading to 14,765 fewer young cigar smokers.
- * In the past two years, the prevalence of current cigar smoking **has not changed significantly**.

Past 30-Day Cigarette Smoking and E-Cigarettes Use, Mississippi Public High School Students



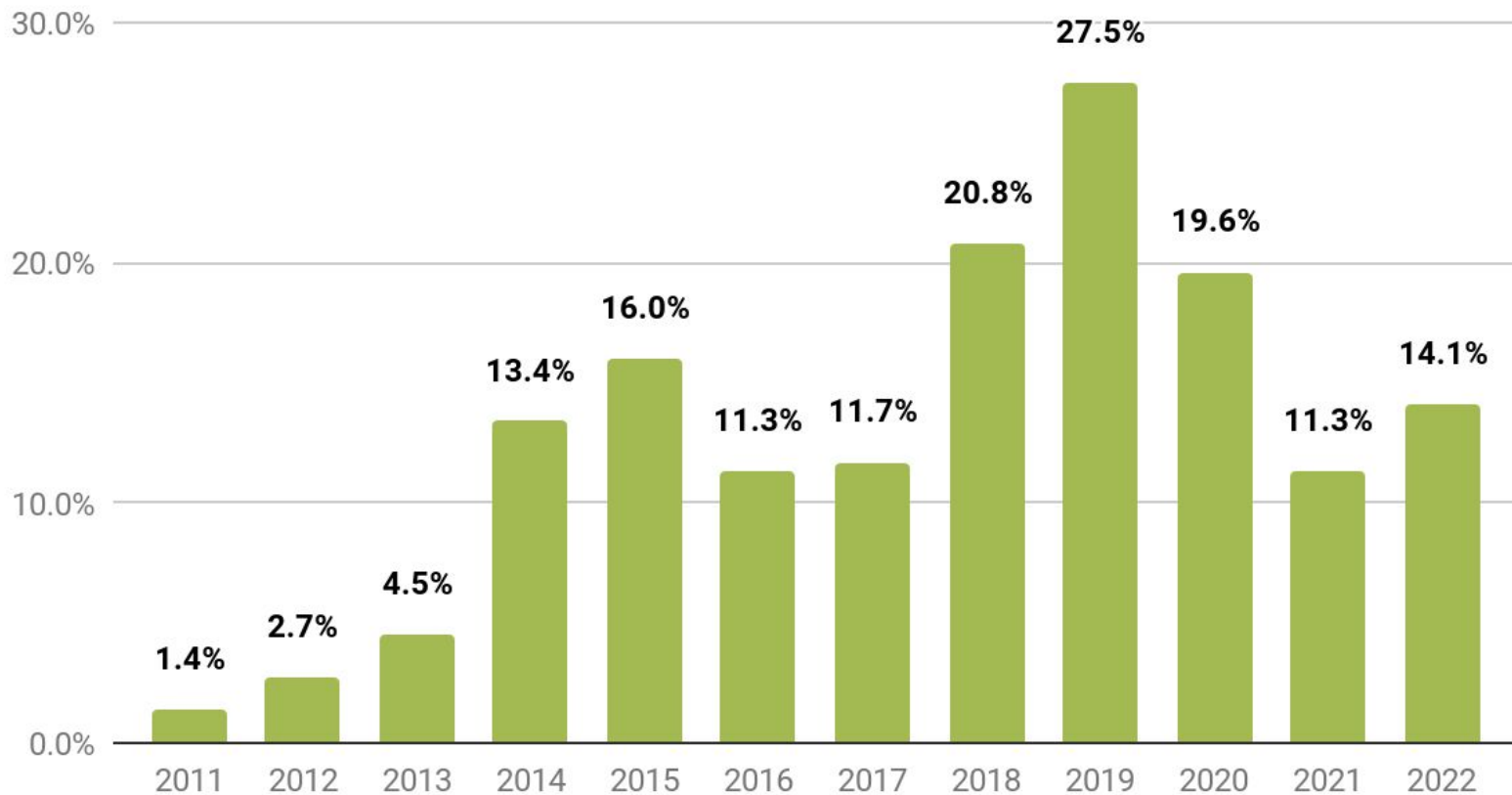
National Youth Tobacco Survey 2019-2020

- 2019
 - Survey transitioned to 100% online
 - Survey taken at school on tablet
- 2020
 - Survey was ended 2 months early due to the pandemic

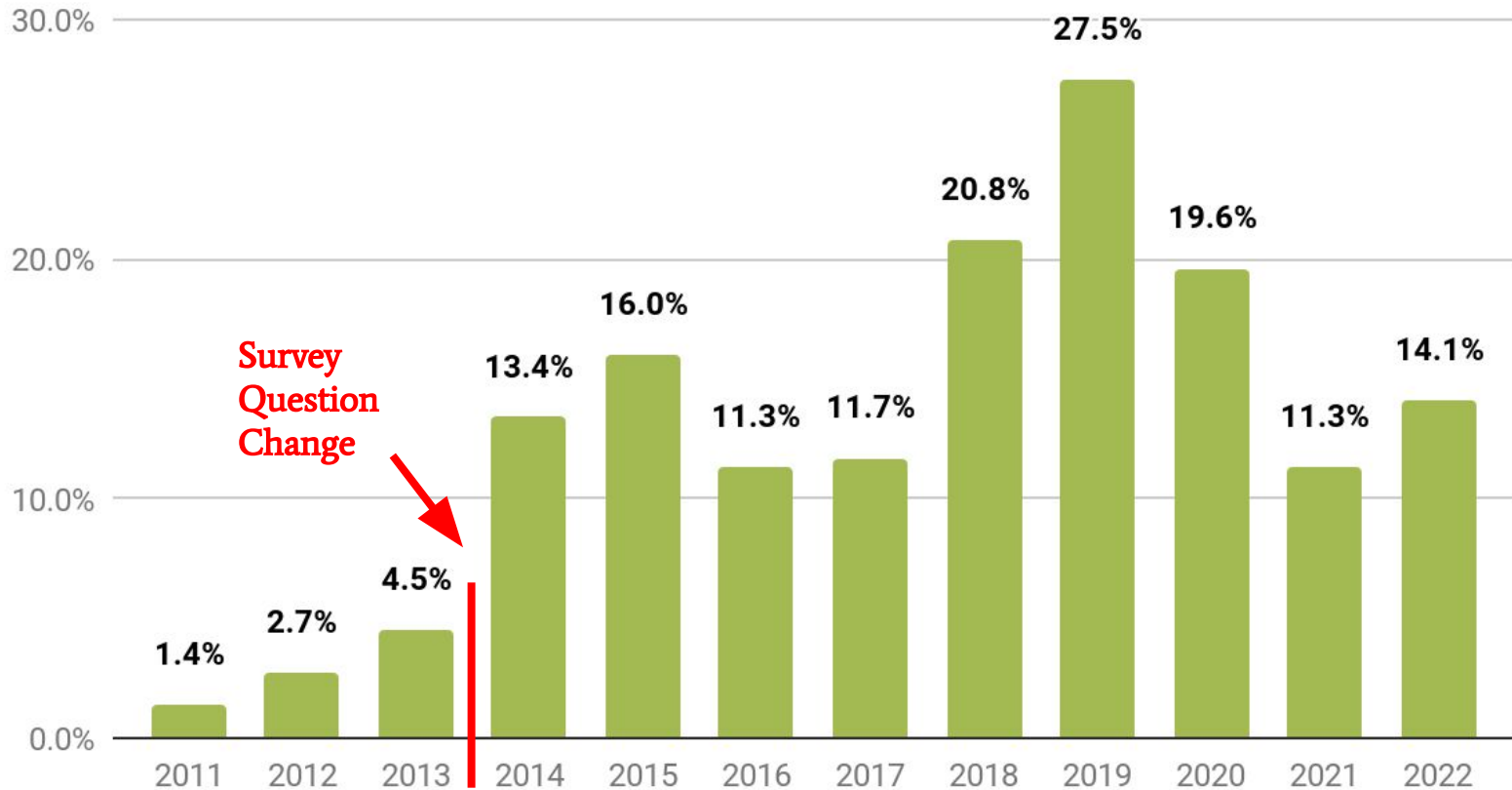
National Youth Tobacco Survey 2021-2022

- 2021
 - Survey online
 - Web-based survey not tablet
 - Survey taken at school (50.8%) or home (49.2%)
- 2022
 - Survey online
 - Web-based survey not tablet
 - Survey primarily taken at school (99.3%)

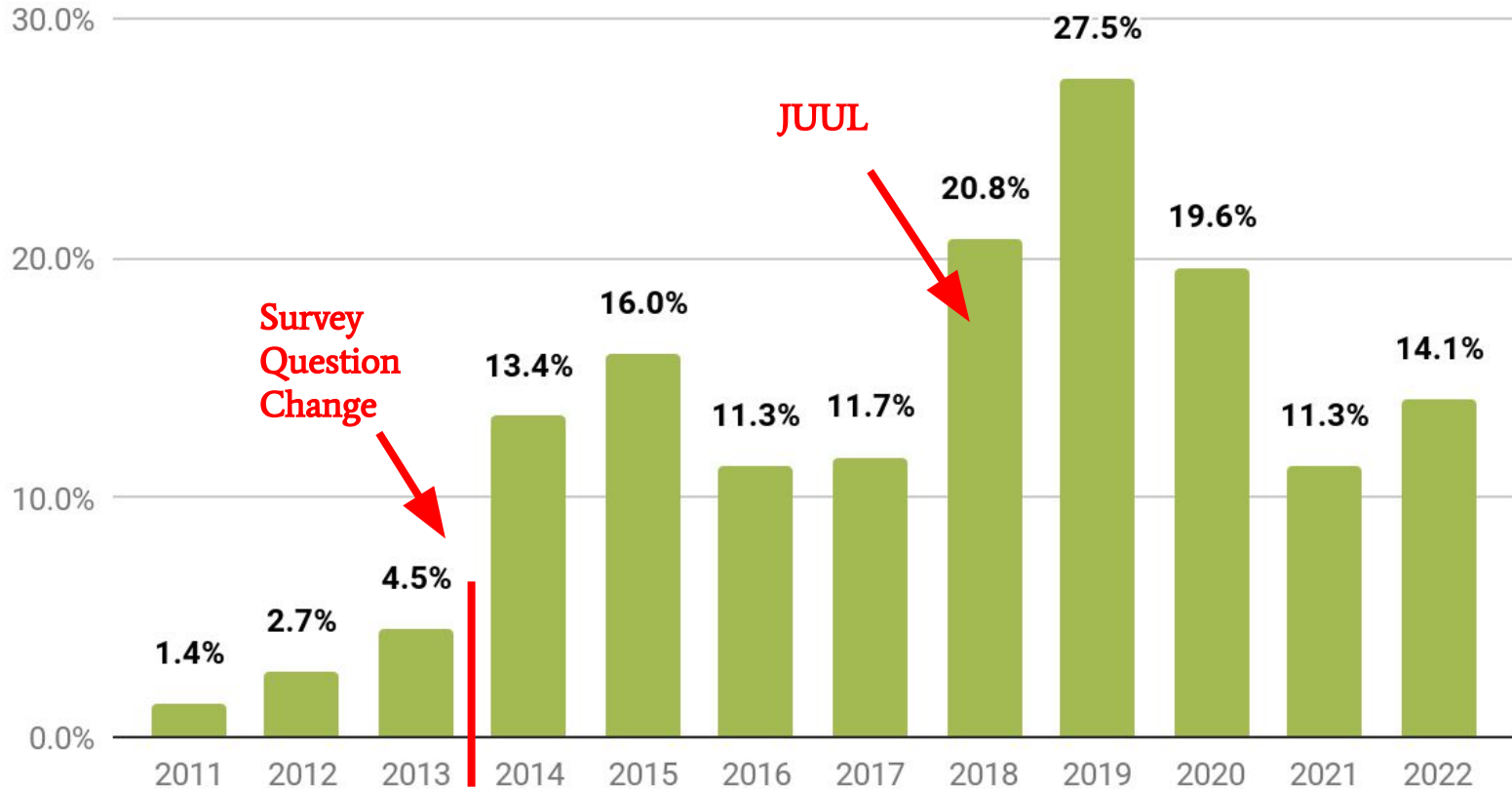
Past 30-Day E-Cigarette Use, U.S. High School Students, NYTS



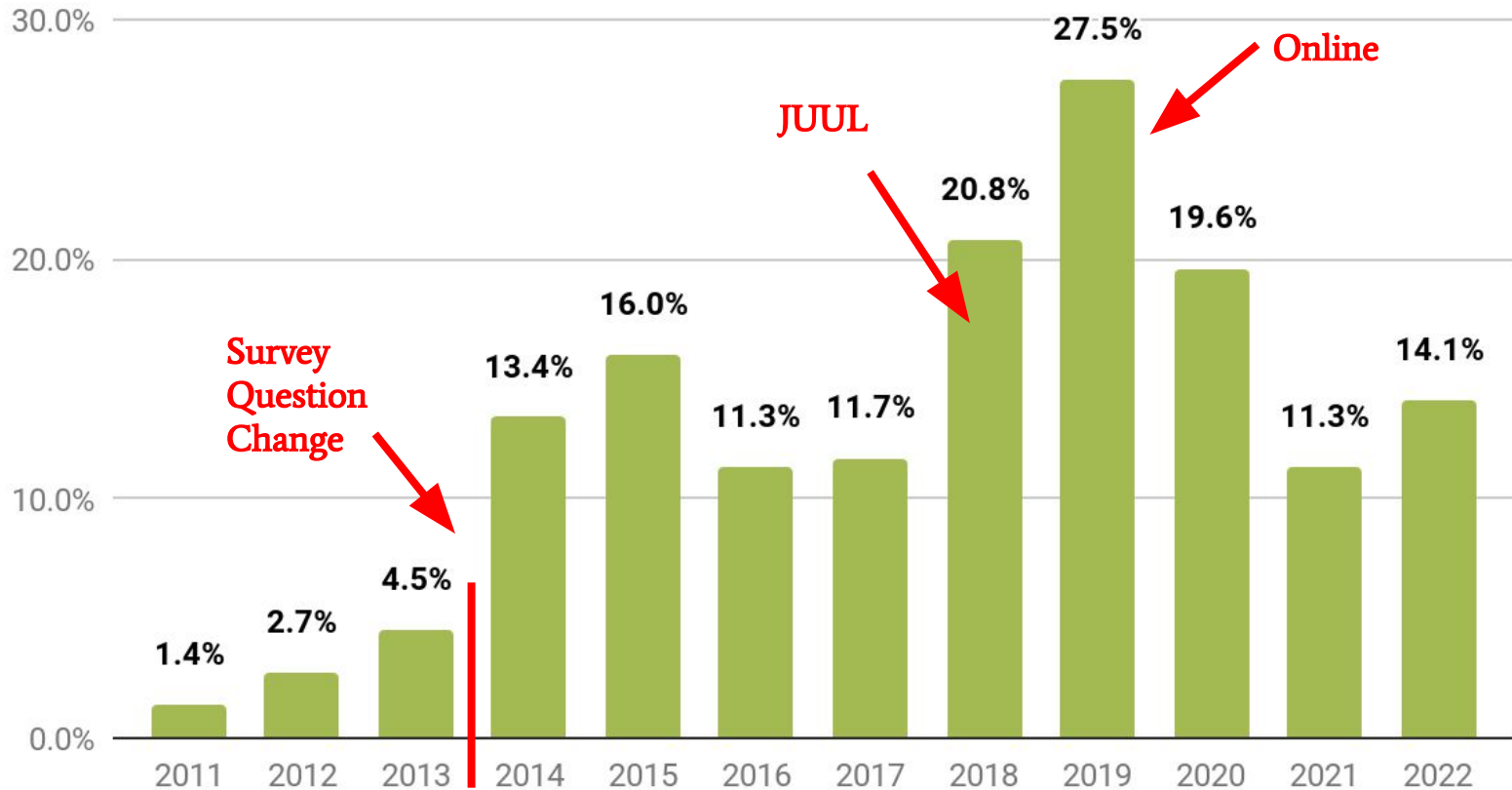
Past 30-Day E-Cigarette Use, U.S. High School Students, NYTS



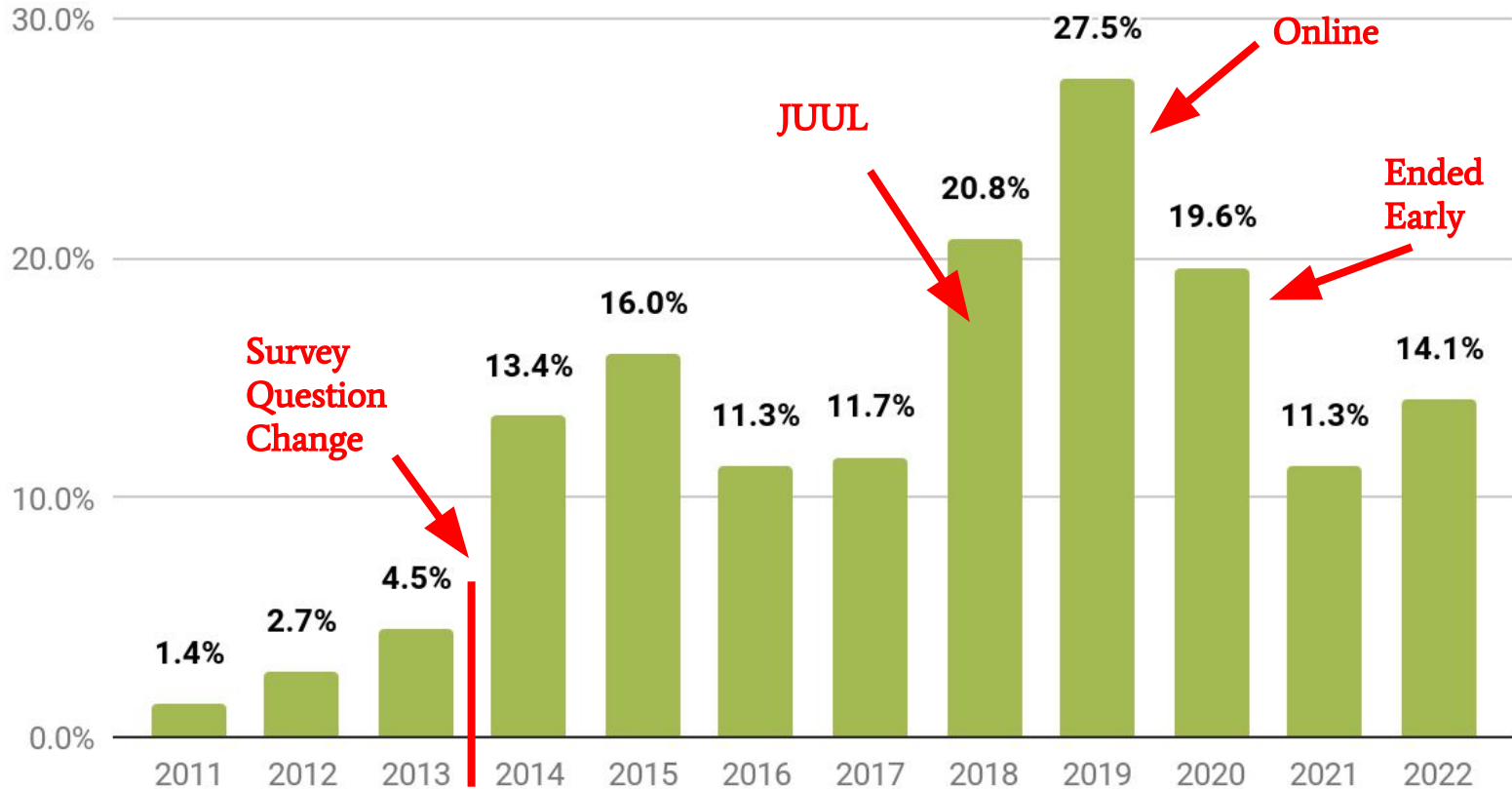
Past 30-Day E-Cigarette Use, U.S. High School Students, NYTS



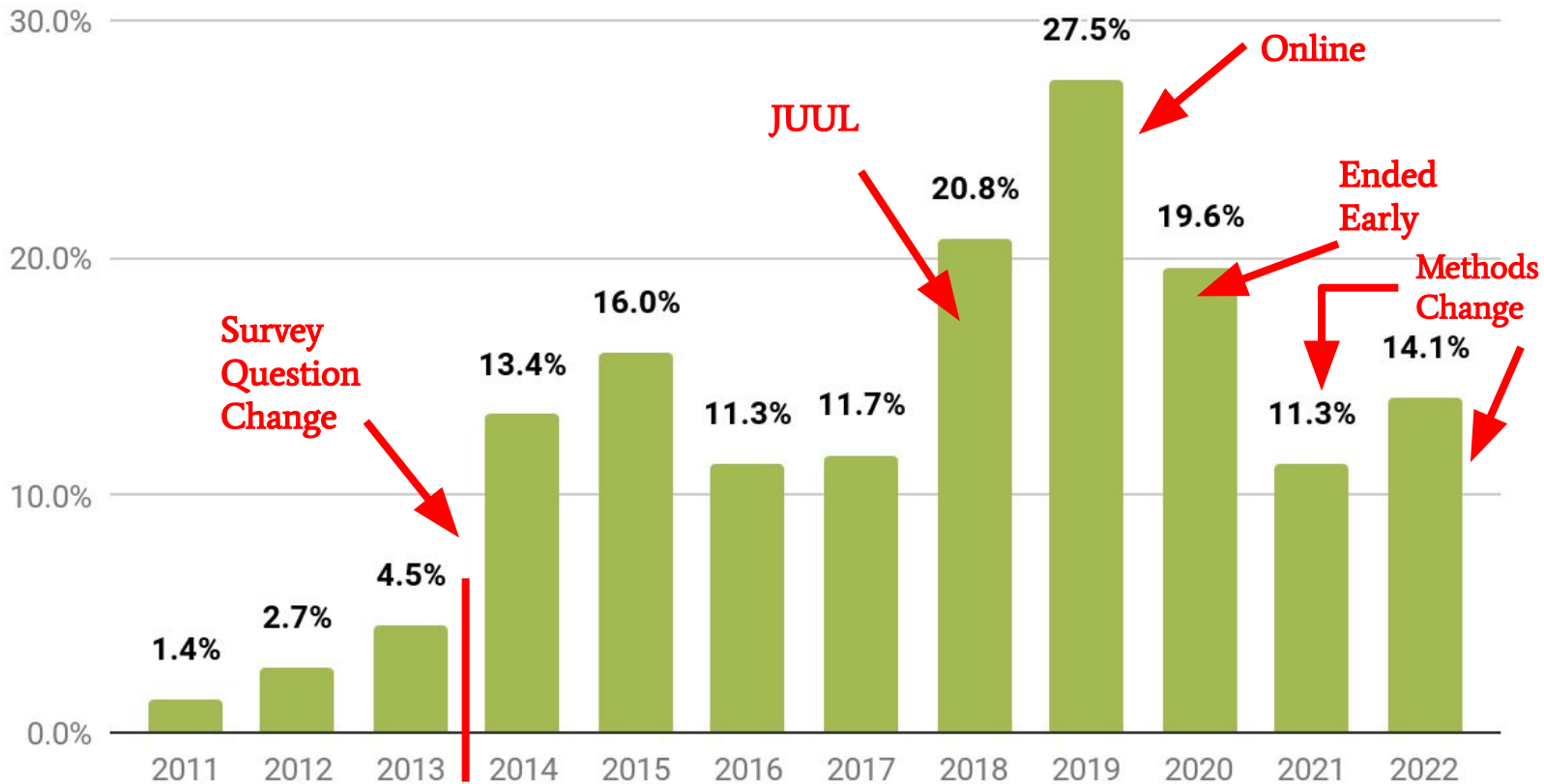
Past 30-Day E-Cigarette Use, U.S. High School Students, NYTS



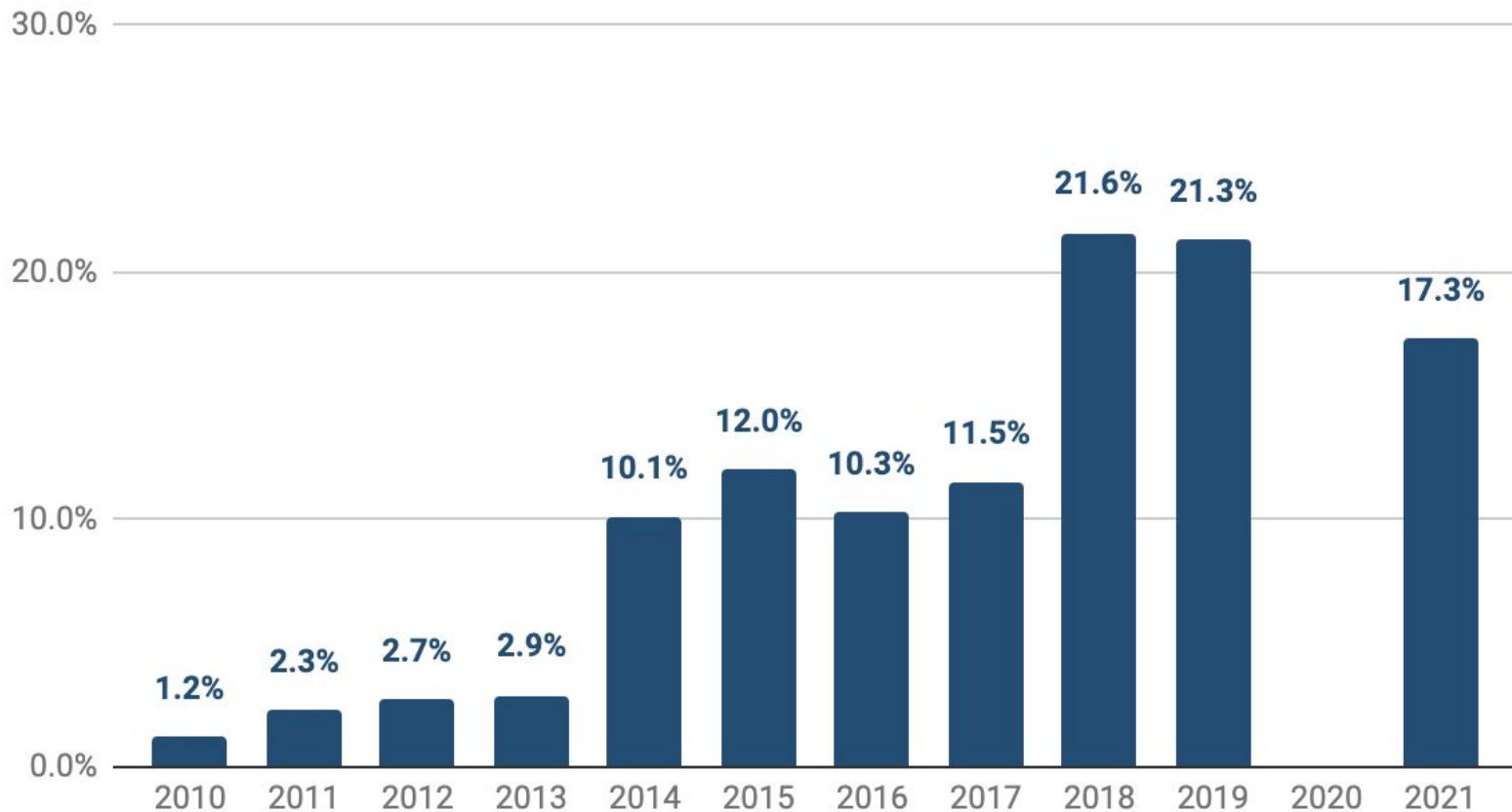
Past 30-Day E-Cigarette Use, U.S. High School Students, NYTS



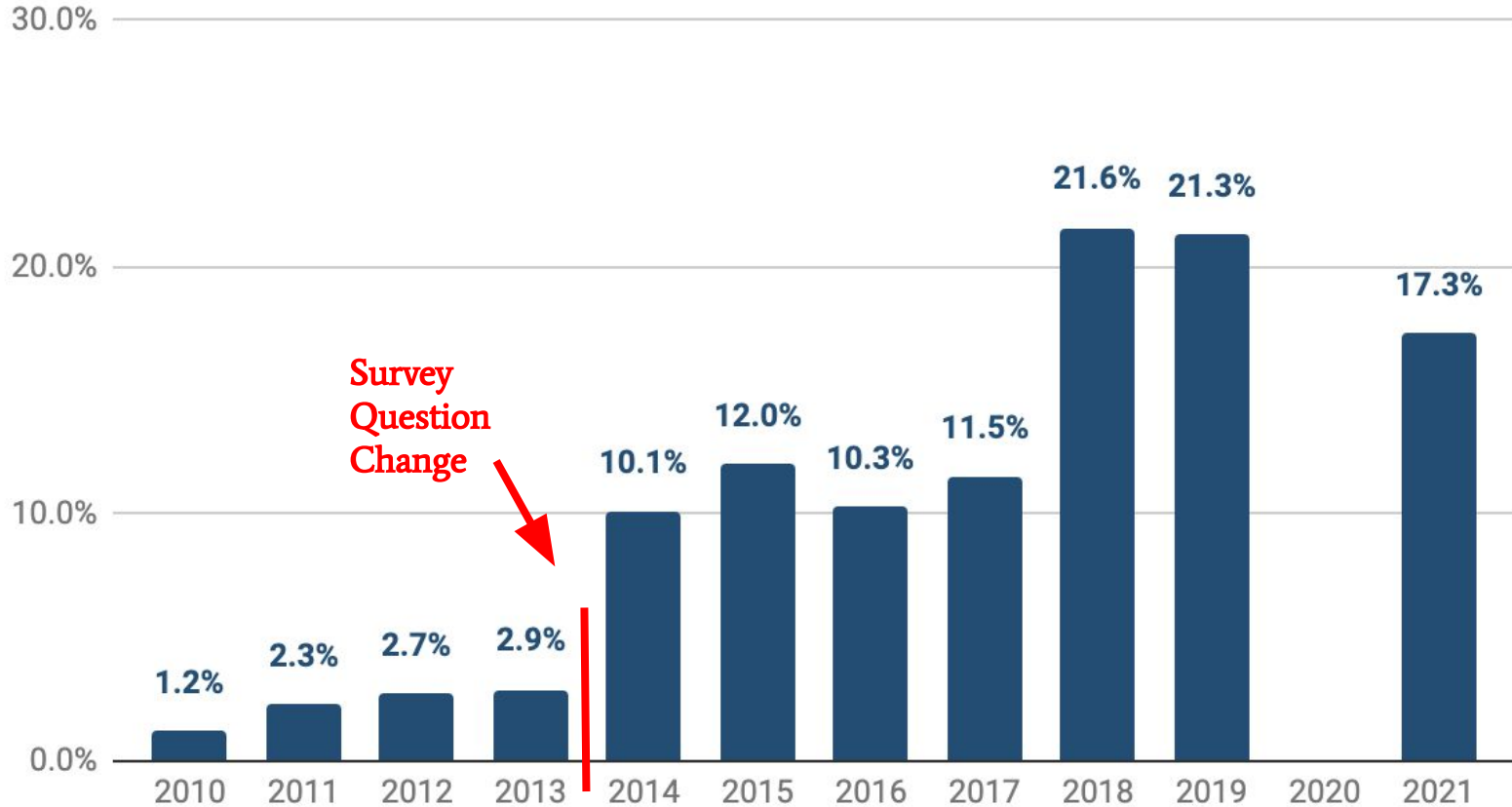
Past 30-Day E-Cigarette Use, U.S. High School Students, NYTS



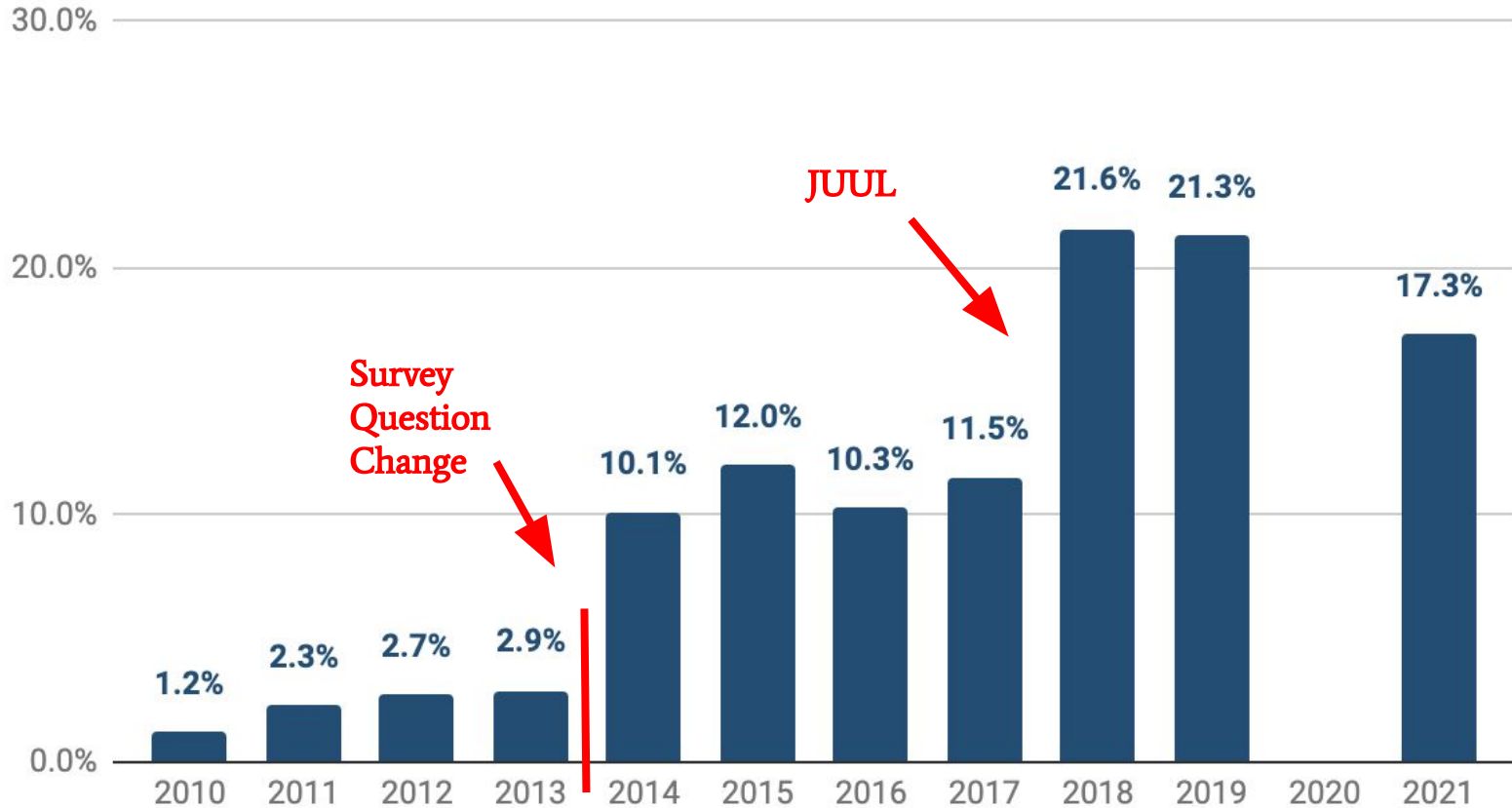
Past 30 Day E-Cigarette Use, M.S. High School Students, YTS



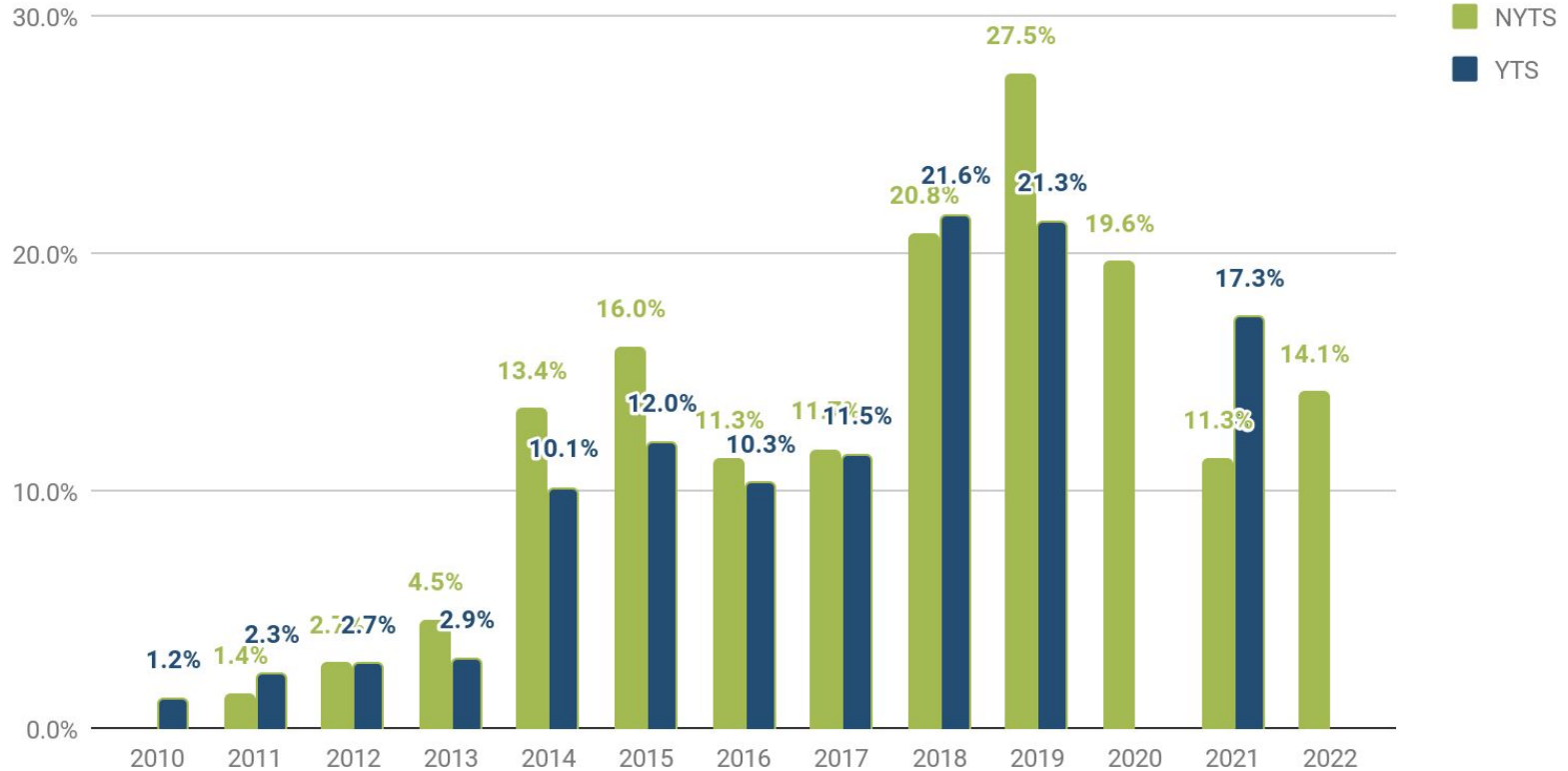
Past 30 Day E-Cigarette Use, M.S. High School Students, YTS



Past 30 Day E-Cigarette Use, M.S. High School Students, YTS

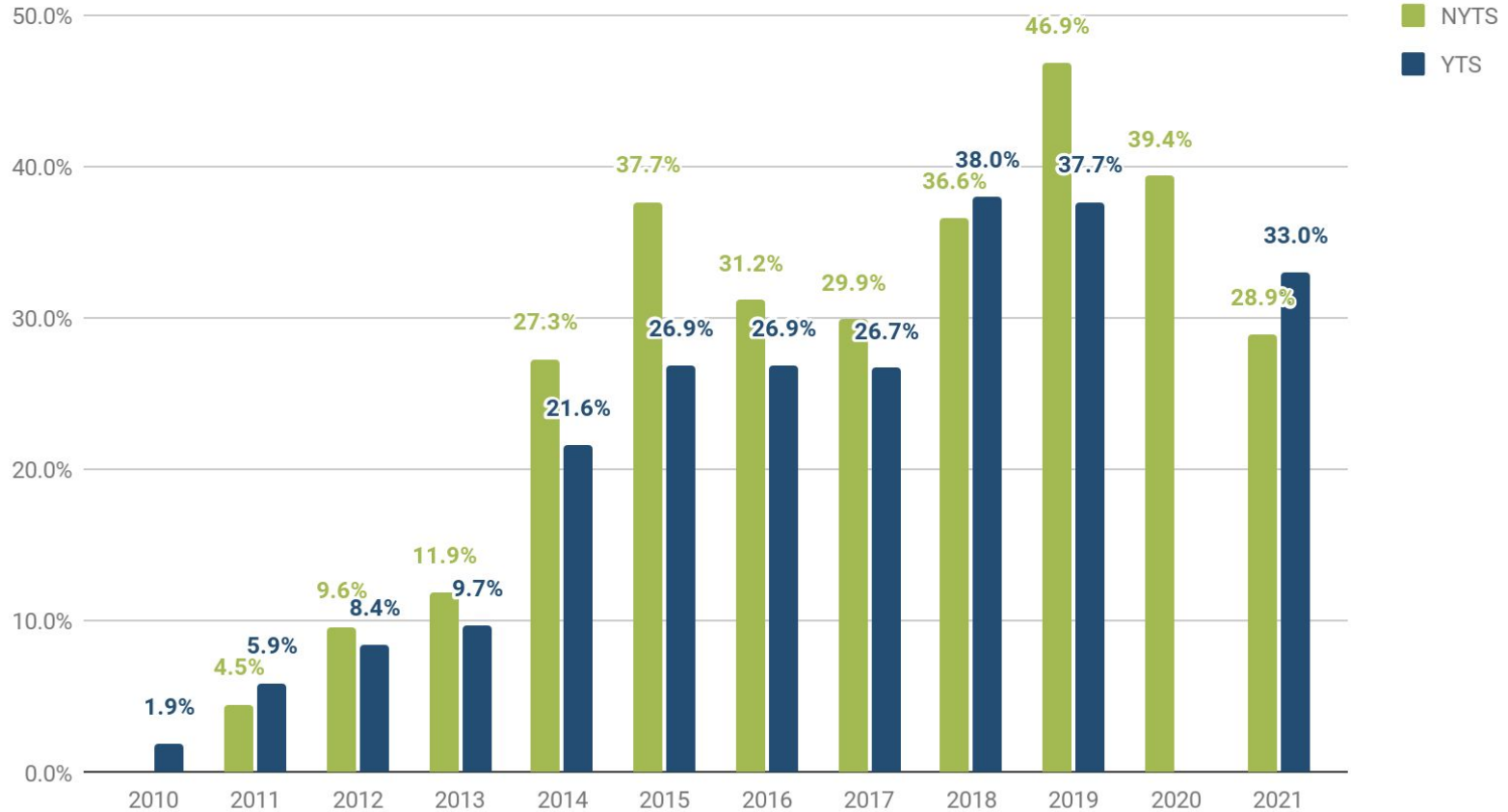


High School Current E-Cigarette Use



2010

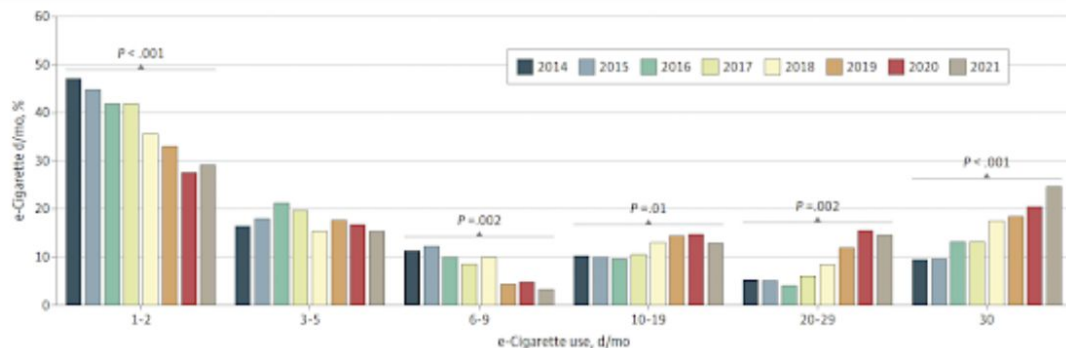
High School Ever E-Cigarette Use



Nicotine Addiction and Intensity of e-Cigarette Use by Adolescents

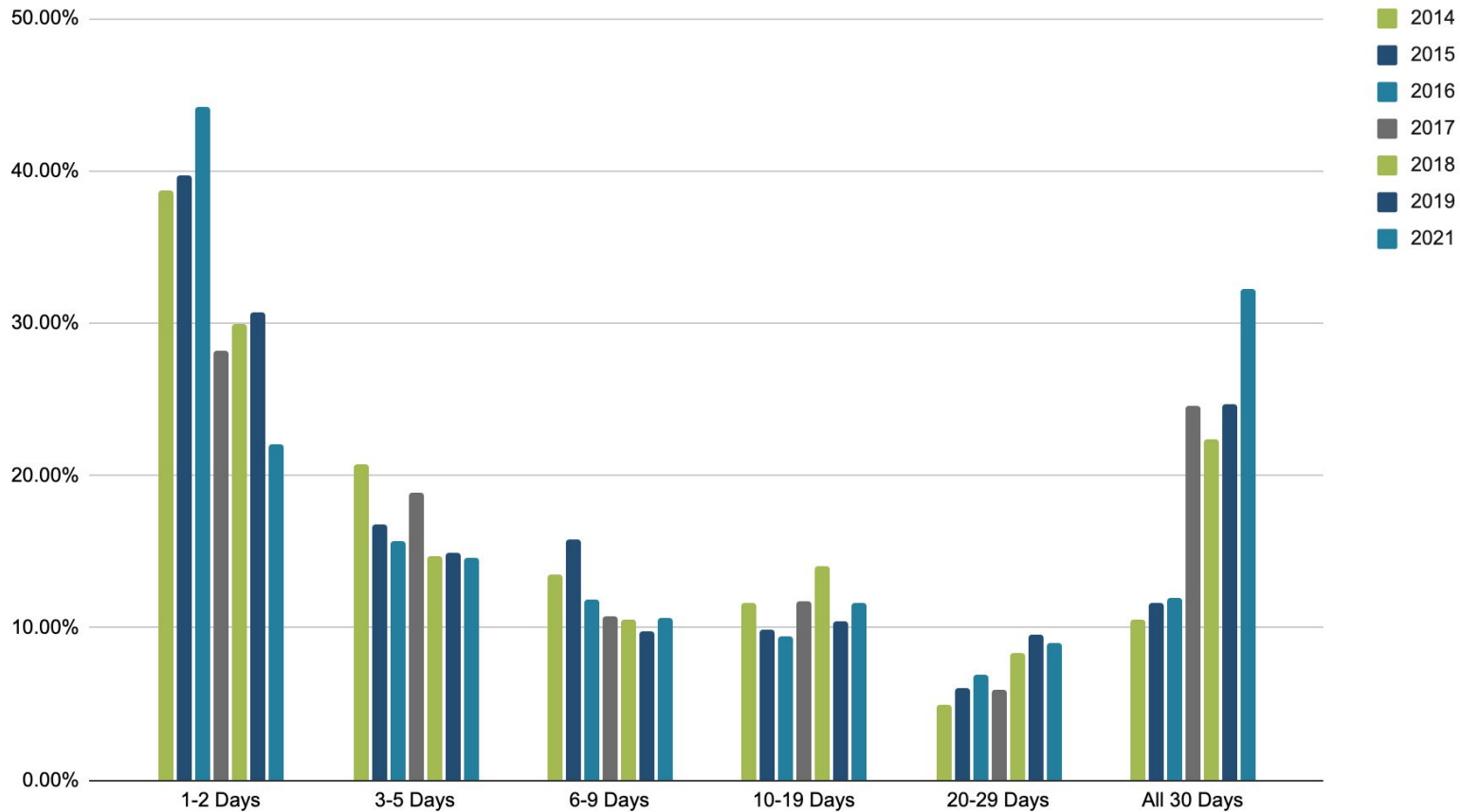
Earlier this month, Stan Glantz published [an important paper](#) on nicotine addiction and intensity of e-cigarette use by adolescents. The paper reported on findings from the 2014 to 2021 National Youth Tobacco Surveys. Among the key findings: Between 2014 and 2021, days of e-cigarette use per month shifted from light use to heavier use. This increase in e-cigarette use intensity suggests that more more adolescents are developing addictions to nicotine.

Figure 3. Days of e-Cigarette Use per Month by Adolescents



Between 2014 and 2021, days of e-cigarette use per month shifted from light use to heavier use. Statistical results are shown in eTable 3 in the [Supplement](#).

HS E-Cigarette Use Days Per Month 2014-2021

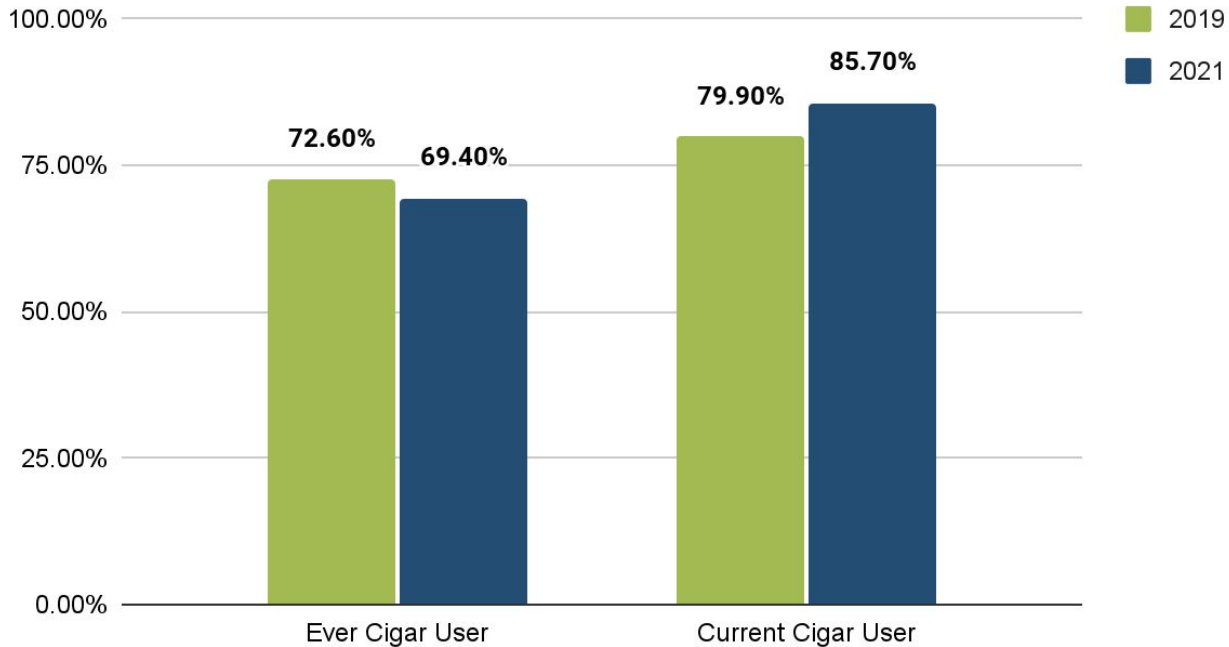


FY2022 MS Youth Tobacco Survey

- Status - Concluding data collection
- Methodology - Consistent with all prior years
 - Paper and pencil survey

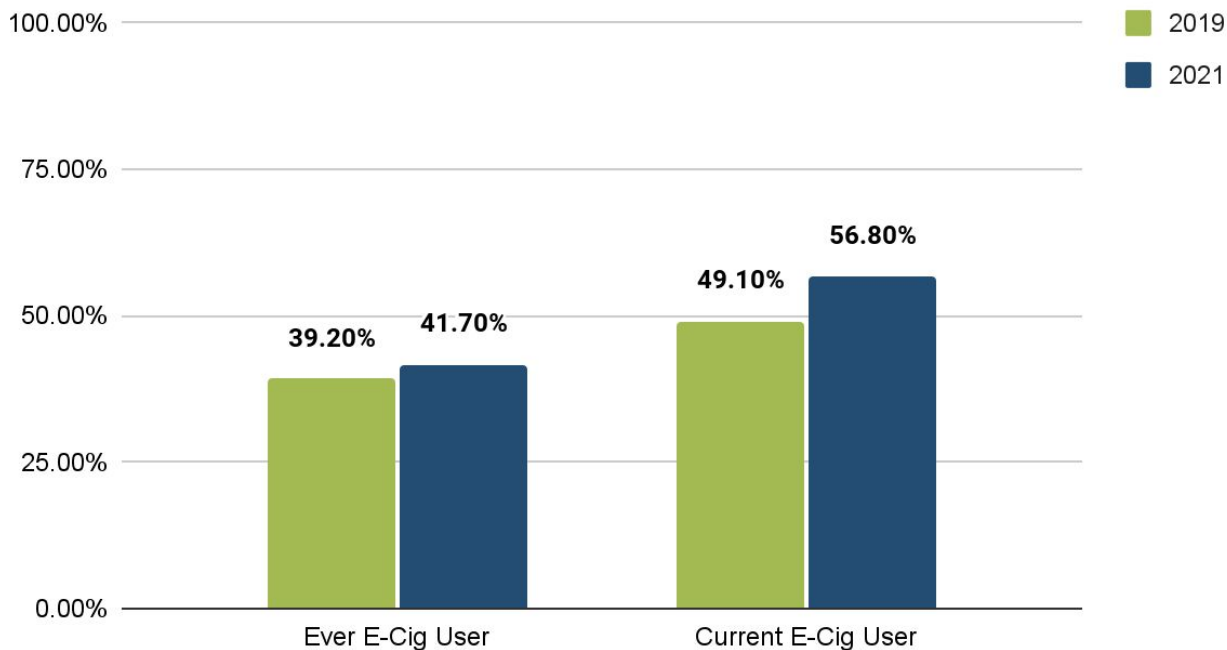
Emerging Products - Marijuana Use (Youth)

Cigar Use - Ever Used Marijuana in a Cigar



Emerging Products - Marijuana Use (Youth)

E-Cigarette Use - Ever Used Marijuana in an E-Cigarette

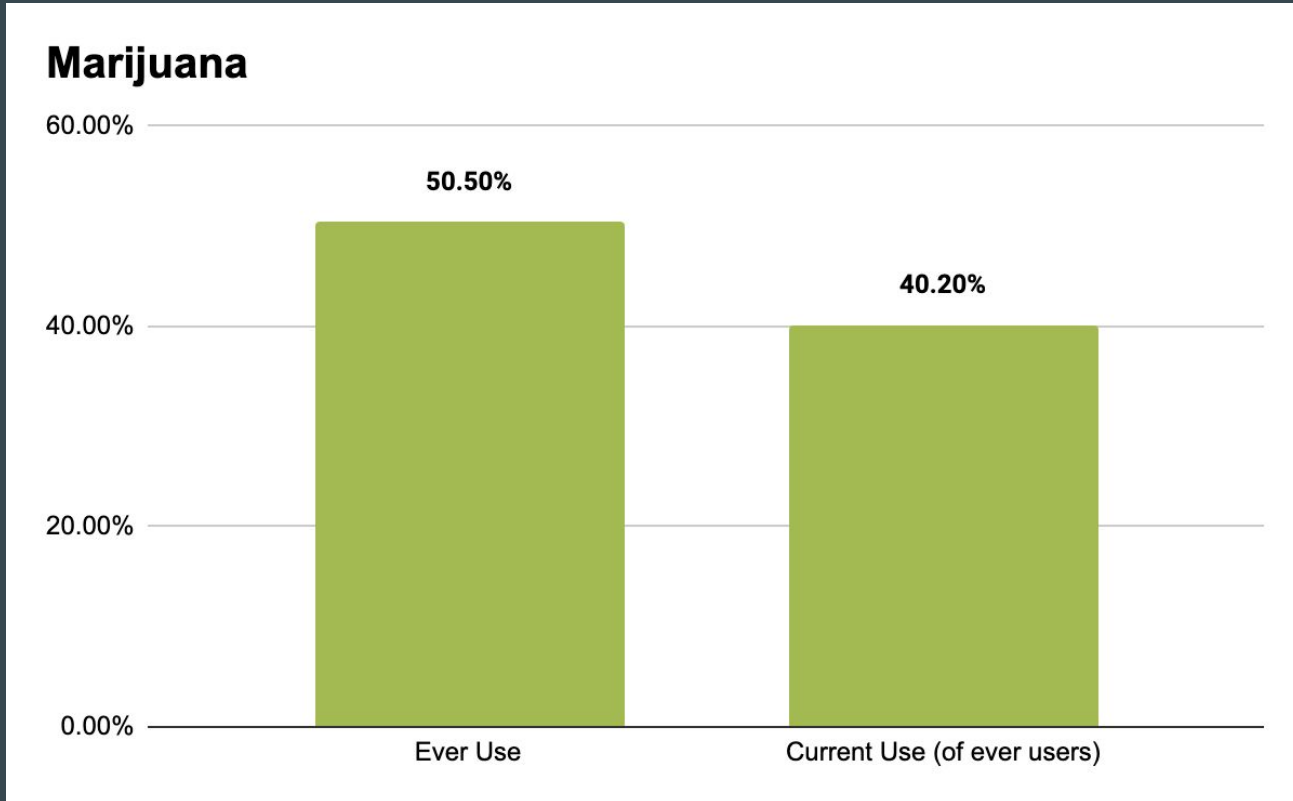


Marijuana Use (Youth)

New Additions for 2022 MS YTS

- 6 Questions have been added to the 2022 MS YTS survey
 - Prevalence (ever use)
 - Age of use
 - Frequency of use (current use)
 - Ways of obtaining (multiple choice and select **usual** source)
 - Cessation

Marijuana Use (Young Adults)



For More Information
mstobaccodata.org

For YTS Data Book

<https://mstobaccodata.org/wp-content/uploads/2022/07/YTS-publication-2022.pdf>