

# Youth Tobacco Survey Data Presentation and Discussion



Emily McClelland, M.S.  
Senior Research Associate  
30 August 2022



MISSISSIPPI STATE UNIVERSITY™  
SOCIAL SCIENCE RESEARCH CENTER

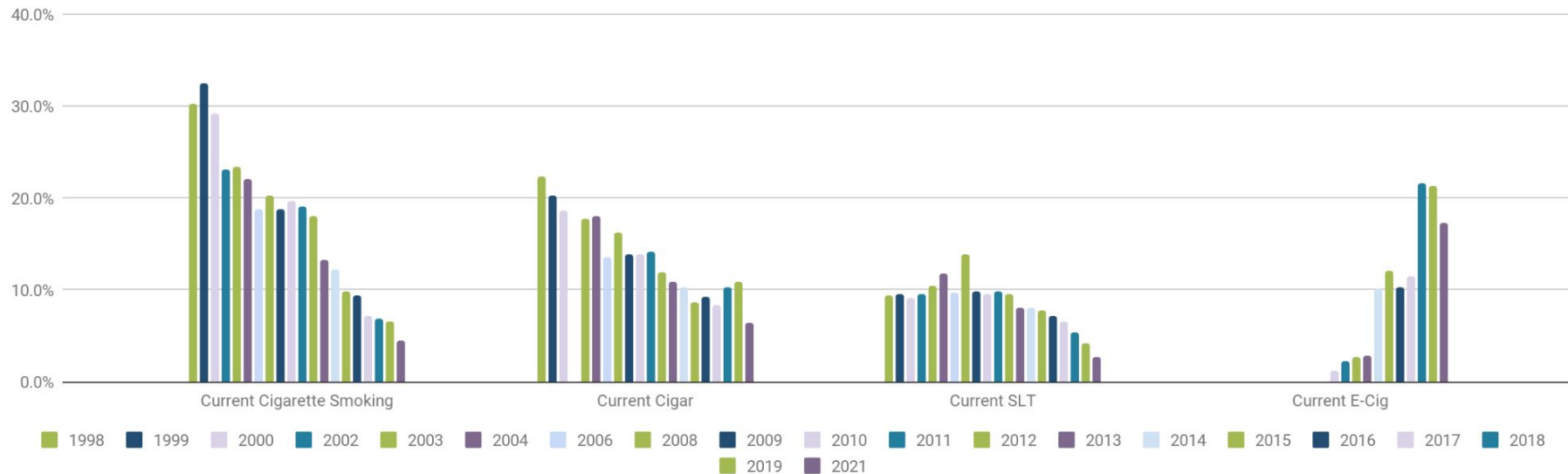


# FY2022 MS Youth Tobacco Survey

- Status - Currently in the field
- Methodology - Consistent with all prior years
  - Paper and pencil survey

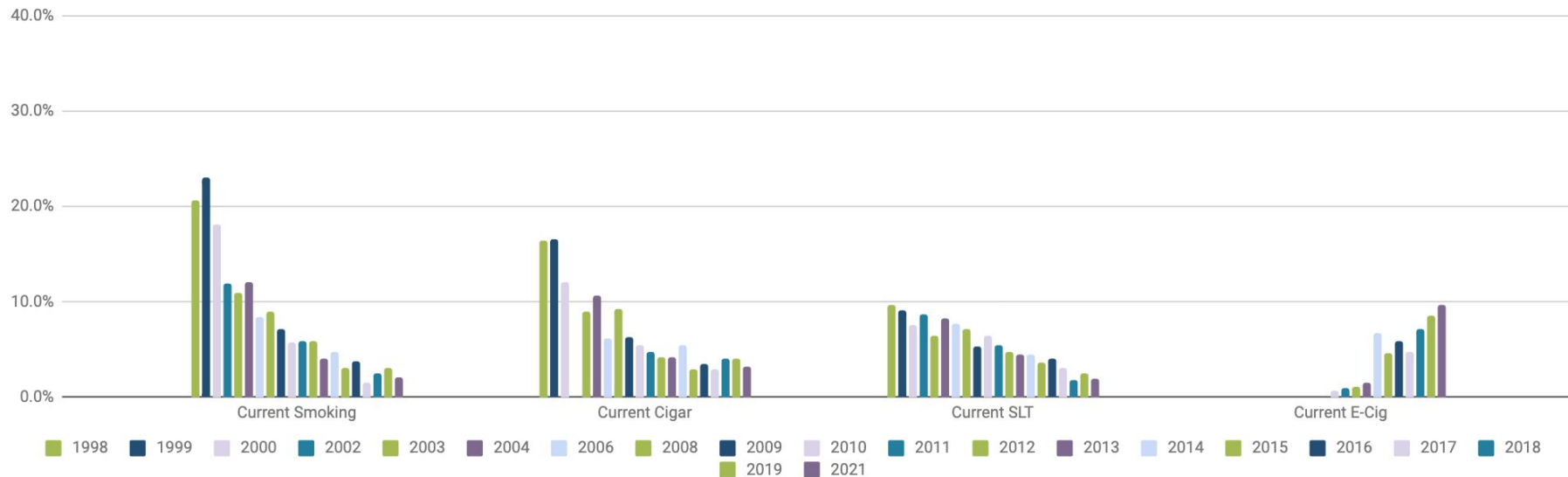
# MS HS Youth Tobacco Use 1998-2021

High School Past 30-Day Use, 1998-2021



# MS MS Youth Tobacco Use 1998-2021

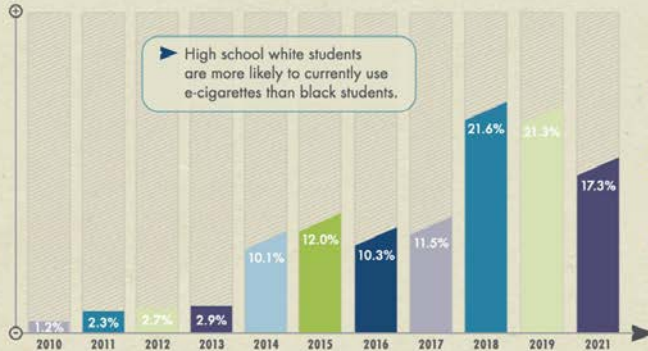
Middle School Past 30-Day Use, 1998-2021



# current electronic cigarette use

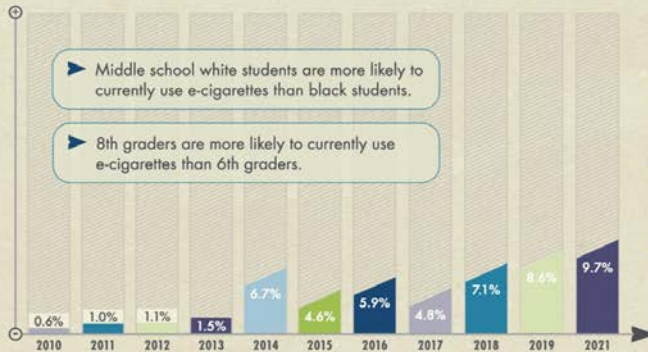
## MISSISSIPPI PUBLIC SCHOOLS

HIGH SCHOOLS {2010-2021}



- \* In 2021, **22,327 Mississippi public high school students** had used e-cigarettes on at least one of the past 30 days.
- \* The prevalence of current e-cigarette use has **increased by 1,342%** since 2010, leading to 20,778 more young e-cigarette users.
- \* In the past two years, the prevalence of current e-cigarette use **has not changed significantly**.

MIDDLE SCHOOLS {2010-2021}



- \* In 2021, **10,850 Mississippi public middle school students** had used e-cigarettes on at least one of the past 30 days.
- \* The prevalence of current e-cigarette use has **increased by 1,517%** since 2010, leading to 10,179 more young e-cigarette users.
- \* In the past two years, the prevalence of current e-cigarette use **has not changed significantly**.

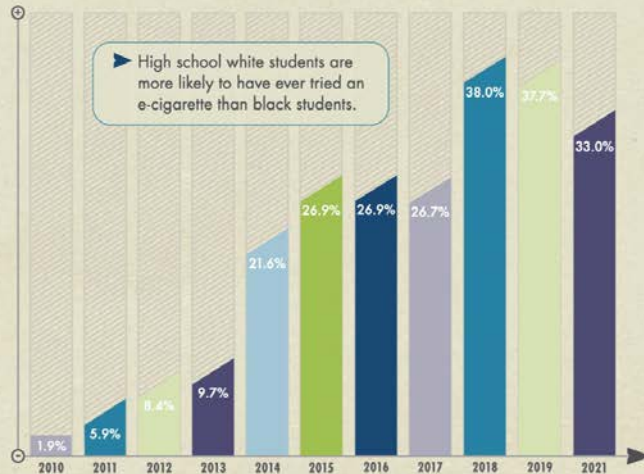
▶ Significant Demographic Differences

Changes between 2013 and 2014 in the wording and placement of questions about the use of e-cigarettes might have had an impact on reported use of these products.

# ever tried an electronic cigarette

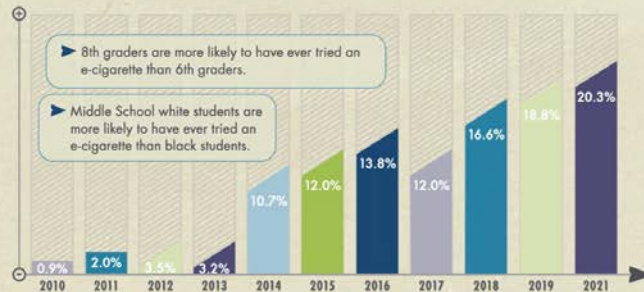
## MISSISSIPPI PUBLIC SCHOOLS

HIGH SCHOOLS {2010-2021}



- \* In 2021, **42,588 Mississippi public high school students** had tried at least one e-cigarette.
- \* The prevalence of having ever tried an e-cigarette has **increased by 1,637%** since 2010, leading to 40,136 more high school students who have tried using e-cigarettes.
- \* In the past two years, the prevalence of having ever tried using e-cigarettes **has not changed significantly**.

MIDDLE SCHOOLS {2010-2021}



- \* In 2021, **22,706 Mississippi public middle school students** had tried at least one e-cigarette.
- \* The prevalence of having ever tried an e-cigarette has **increased by 2,156%** since 2010, leading to 21,699 more middle school students who have tried using e-cigarettes.
- \* In the past two years, the prevalence of having ever tried using e-cigarettes **has not changed significantly**.

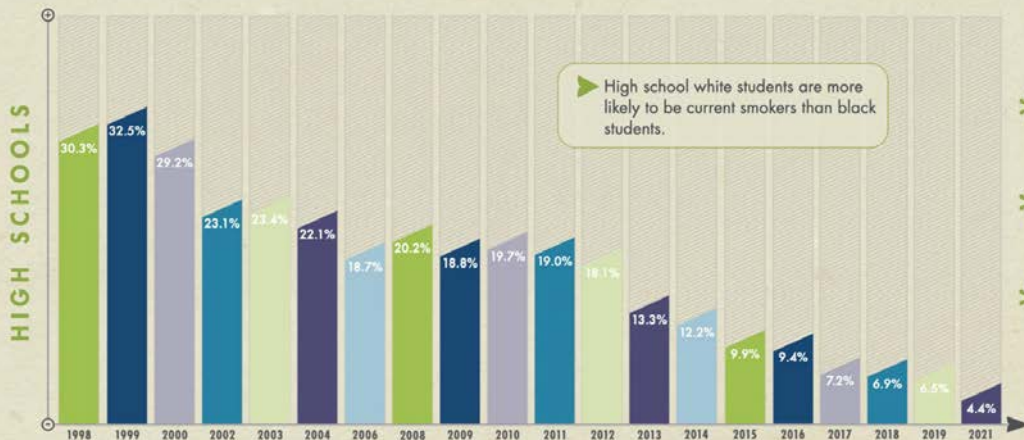
► Significant Demographic Differences

Changes between 2013 and 2014 in the wording and placement of questions about the use of e-cigarettes might have had an impact on reported use of these products.

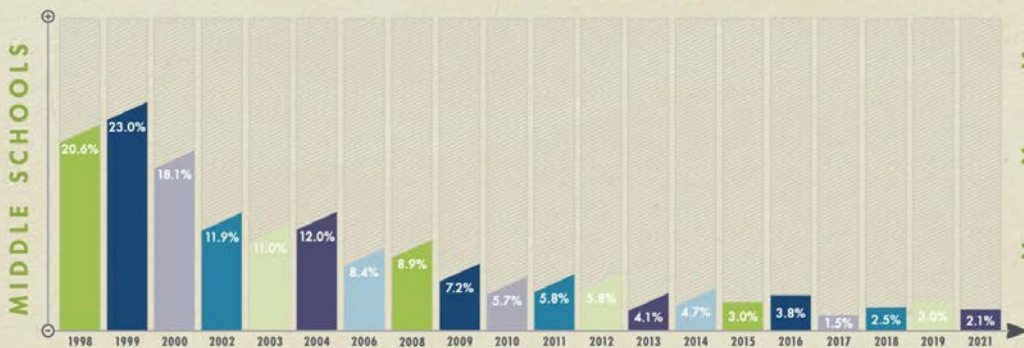


# current cigarette smoking

## MISSISSIPPI PUBLIC SCHOOLS



- \* In 2021, **5,678 Mississippi public high school students** had smoked cigarettes on at least one of the past 30 days.
- \* The prevalence of current smoking has **decreased by 86%** since 1998, leading to 33,425 fewer young smokers.
- \* In the past two years, the prevalence of current smoking **has not changed significantly**.

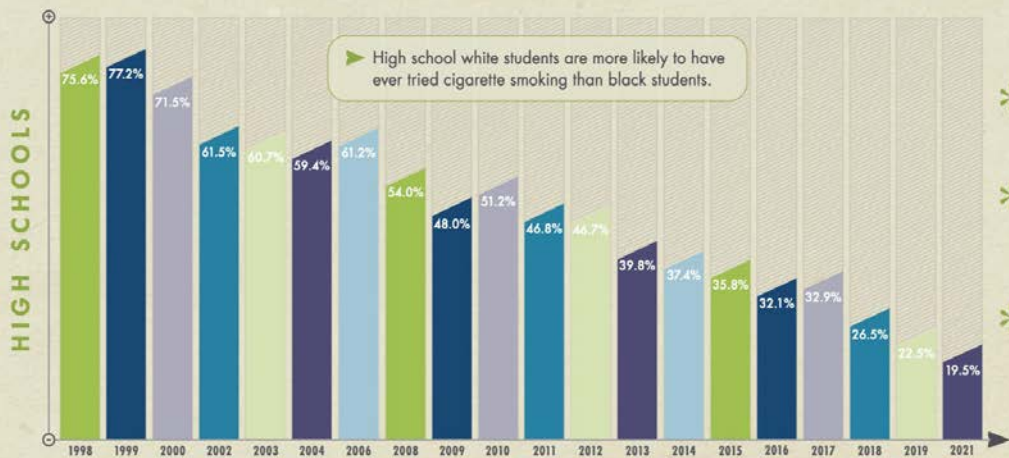


- \* In 2021, **2,349 Mississippi public middle school students** had smoked cigarettes on at least one of the past 30 days.
- \* The prevalence of current smoking has **decreased by 90%** since 1998, leading to 20,693 fewer young smokers.
- \* In the past two years, the prevalence of current smoking **has not changed significantly**.

► Significant Demographic Differences

# ever tried a cigarette

## MISSISSIPPI PUBLIC SCHOOLS



- \* In 2021, **25,166** Mississippi public high school students had tried at least one cigarette.
- \* The prevalence of having ever tried a cigarette has **decreased by 74%** since 1998, leading to 72,400 fewer high school students who have tried smoking.
- \* In the past two years, the prevalence of having ever tried smoking **has not changed significantly**.



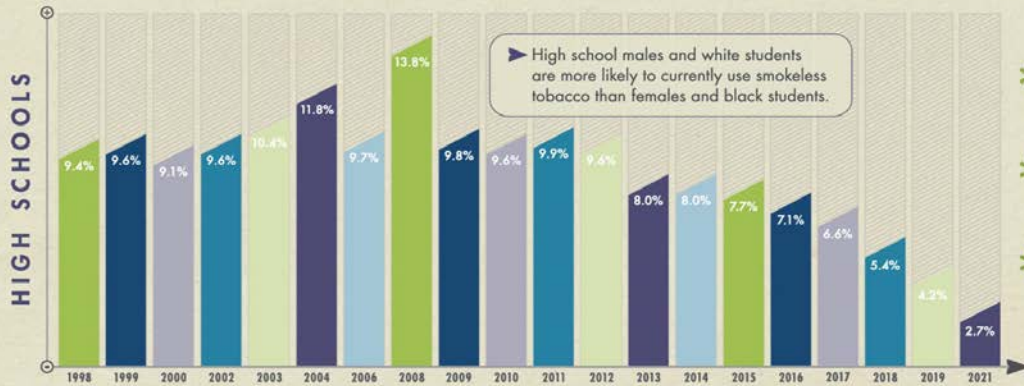
- \* In 2021, **14,541** Mississippi public middle school students had tried at least one cigarette.
- \* The prevalence of having ever tried a cigarette has **decreased by 76%** since 1998, leading to 46,195 fewer middle school students who have tried smoking.
- \* In the past two years, the prevalence of having ever tried smoking **has not changed significantly**.

Significant Demographic Differences

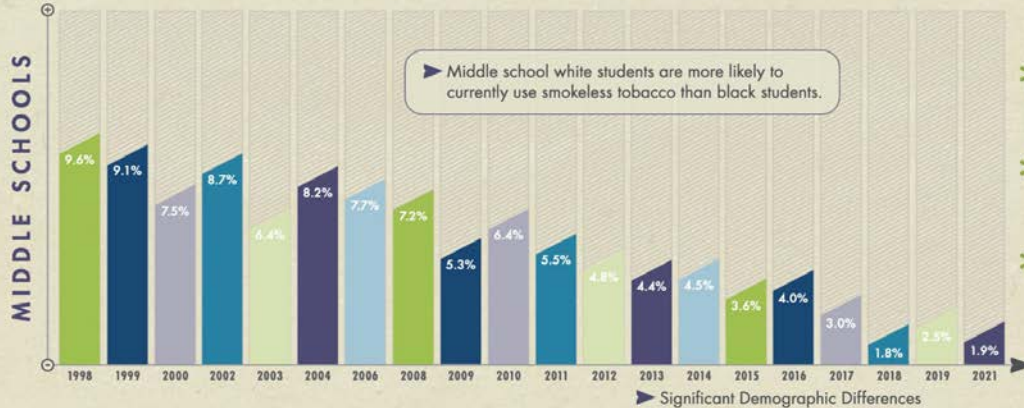


# current smokeless tobacco use

## MISSISSIPPI PUBLIC SCHOOLS



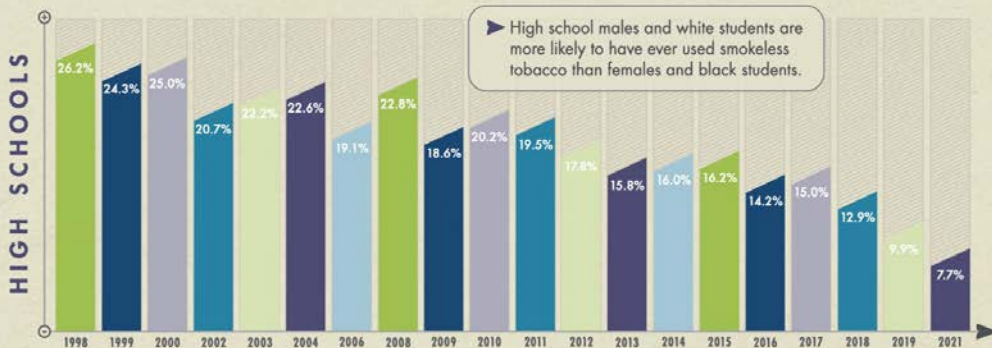
- \* In 2021, 3,484 Mississippi public high school students had used SLT on at least one of the past 30 days.
- \* The prevalence of current SLT use has **decreased by 71%** since 1998, leading to 8,647 fewer young SLT users.
- \* In the past two years, the prevalence of current SLT use **has not changed significantly**.



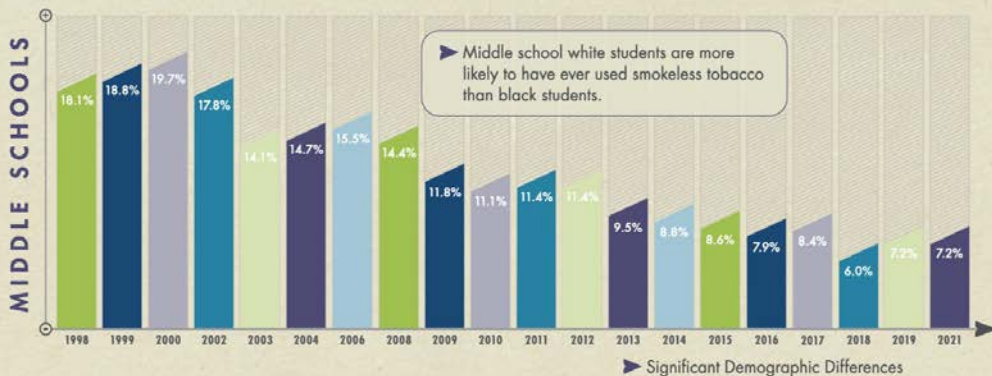
- \* In 2021, 2,125 Mississippi public middle school students had used SLT on at least one of the past 30 days.
- \* The prevalence of current SLT use has **decreased by 80%** since 1998, leading to 8,613 fewer young SLT users.
- \* In the past two years, the prevalence of current SLT use **has not changed significantly**.

# ever tried smokeless tobacco

## MISSISSIPPI PUBLIC SCHOOLS



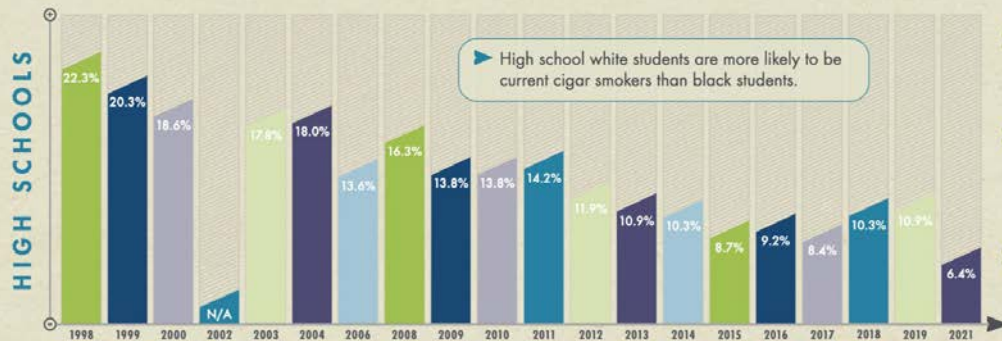
- \* In 2021, **9,937 Mississippi public high school students** had tried SLT at least one time.
- \* The prevalence of having ever tried SLT has **decreased by 71%** since 1998, leading to 23,875 fewer high school students who have tried SLT.
- \* In the past two years, the prevalence of having ever tried SLT **has not changed significantly**.



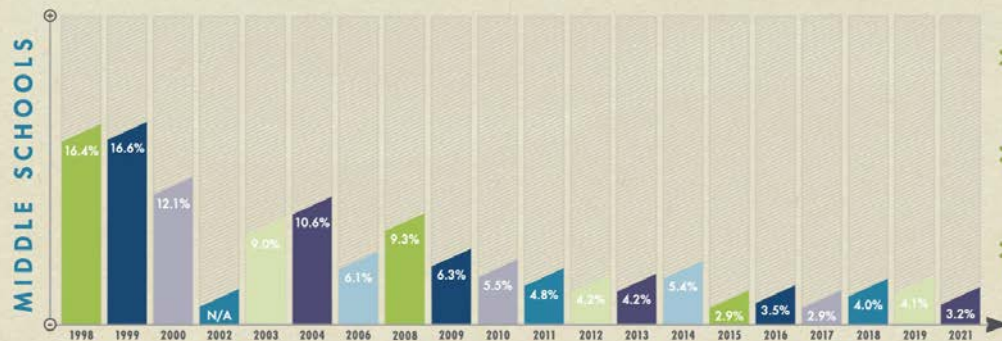
- \* In 2021, **8,053 Mississippi public middle school students** had tried SLT at least one time.
- \* The prevalence of having ever tried SLT has **decreased by 60%** since 1998, leading to 12,192 fewer middle school students who have tried SLT.
- \* In the past two years, the prevalence of having ever tried SLT **has not changed significantly**.

# current cigar smoking

## MISSISSIPPI PUBLIC SCHOOLS



- \* In 2021, 8,260 Mississippi public high school students had smoked cigars on at least one of the past 30 days.
- \* The prevalence of current cigar smoking has *decreased by 71%* since 1998, leading to 20,520 fewer young cigar smokers.
- \* In the past two years, the prevalence of current cigar smoking *has changed significantly*.



- \* In 2021, 3,579 Mississippi public middle school students had smoked cigars on at least one of the past 30 days.
- \* The prevalence of current cigar smoking has *decreased by 80%* since 1998, leading to 14,765 fewer young cigar smokers.
- \* In the past two years, the prevalence of current cigar smoking *has not changed significantly*.



# ever tried a cigar

## MISSISSIPPI PUBLIC SCHOOLS



- \* In 2021, 22,327 Mississippi public high school students had tried at least one cigar.
- \* The prevalence of having ever tried a cigar has *decreased by 67%* since 1998, leading to 46,073 fewer high school students who have tried cigar smoking.
- \* In the past two years, the prevalence of having ever tried smoking cigars *has changed significantly*.



- \* In 2021, 9,731 Mississippi public middle school students had tried at least one cigar.
- \* The prevalence of having ever tried a cigar has *decreased by 73%* since 1998, leading to 26,621 fewer middle school students who have tried cigar smoking.
- \* In the past two years, the prevalence of having ever tried smoking cigars *has not changed significantly*.

▶ Significant Demographic Differences

## Change in Electronic Cigarette Use

\*\*Due to the newness of the product, e-cigarette rates were extremely low in 2010 when the YTS first asked about e-cigarette use. The percent change in e-cigarette use reflects this and highlights the surge in use among high school and middle school students.

Current Electronic Cigarette Use  
(Public High School)

	2010	2021	% Change
Overall	1.2%	17.3%	↑ 1341.7%*
Female	1.1%	20.1%	↑ 1727.3%*
Male	1.3%	14.4%	↑ 1007.7%*
White	1.8%	24.8%	↑ 1277.8%*
Black	0.6%	9.3%	↑ 1450.0%*
9th	1.2%	18.6%	↑ 1450.0%*
10th	0.9%	14.7%	↑ 1533.3%*
11th	0.3%	17.9%	↑ 5866.7%*
12th	2.5%	18.2%	↑ 628.0%*

Ever Tried an Electronic Cigarette  
(Public High School)

	2010	2021	% Change
Overall	1.9%	33.0%	↑ 1636.8%*
Female	1.8%	37.1%	↑ 1961.1%*
Male	1.9%	28.3%	↑ 1389.5%*
White	3.1%	44.5%	↑ 1335.5%*
Black	0.7%	21.0%	↑ 2900.0%*
9th	1.6%	34.6%	↑ 2062.5%*
10th	1.2%	30.2%	↑ 2416.7%*
11th	1.2%	35.3%	↑ 2841.7%*
12th	3.8%	31.6%	↑ 731.6%*

Frequent Electronic Cigarette Use  
(Public High School)

	2014	2021	% Change
Overall	1.6%	7.1%	↑ 343.8%*
Female	0.9%	7.2%	↑ 700.0%*
Male	2.2%	6.8%	↑ 209.1%*
White	1.8%	12.5%	↑ 594.4%*
Black	0.9%	2.0%	ns
9th	0.7%	5.2%	↑ 642.9%*
10th	1.5%	5.5%	ns
11th	2.2%	7.5%	↑ 240.9%*
12th	2.1%	11.0%	↑ 423.8%*

Current Electronic Cigarette Use  
(Public Middle School)

	2010	2021	% Change
Overall	0.6%	9.7%	↑ 1516.7%*
Female	0.5%	11.0%	↑ 2100.0%*
Male	0.8%	8.4%	↑ 950.0%*
White	1.1%	12.6%	↑ 1045.5%*
Black	0.3%	6.9%	↑ 2200.0%*
6th	0.7%	4.8%	↑ 585.7%*
7th	0.3%	9.6%	↑ 3100.0%*
8th	1.0%	15.2%	↑ 1420.0%*

Ever Tried an Electronic Cigarette  
(Public Middle School)

	2010	2021	% Change
Overall	0.9%	20.3%	↑ 2155.6%*
Female	0.7%	22.4%	↑ 3100.0%*
Male	1.0%	18.1%	↑ 1710.0%*
White	1.4%	26.8%	↑ 1814.3%*
Black	0.4%	14.1%	↑ 3425.0%*
6th	0.8%	13.8%	↑ 1625.0%*
7th	0.5%	21.1%	↑ 4120.0%*
8th	1.3%	26.5%	↑ 1938.5%*

Frequent Electronic Cigarette Use  
(Public Middle School)

	2014	2021	% Change
Overall	1.1%	1.8%	ns
Female	0.4%	2.2%	ns
Male	1.6%	1.3%	ns
White	1.1%	1.9%	ns
Black	1.0%	1.7%	ns
6th	0.4%	1.1%	ns
7th	0.8%	1.2%	ns
8th	2.2%	3.1%	ns

### KEY

{↓} decrease (\*) significant

{↑} increase (ns) non-significant



# Change in Cigarette Smoking

Current Cigarette Smoking  
(Public High School)

	1998	2021	% Change
Overall	30.3%	4.4%	↓ 85.5%*
Female	27.1%	3.9%	↓ 85.6%*
Male	33.9%	4.6%	↓ 86.4%*
White	43.8%	6.6%	↓ 84.9%*
Black	14.2%	2.5%	↓ 82.4%*
9th	27.6%	4.2%	↓ 84.8%*
10th	31.4%	2.8%	↓ 91.1%*
11th	33.5%	4.5%	↓ 86.6%*
12th	29.4%	6.5%	↓ 77.9%*

Ever Tried a Cigarette  
(Public High School)

	1998	2021	% Change
Overall	75.6%	19.5%	↓ 74.2%*
Female	72.6%	19.2%	↓ 73.6%*
Male	78.7%	18.7%	↓ 76.2%*
White	79.4%	27.3%	↓ 65.6%*
Black	70.6%	11.2%	↓ 84.1%*
9th	73.1%	20.0%	↓ 72.6%*
10th	75.0%	13.2%	↓ 82.4%*
11th	76.9%	20.3%	↓ 73.6%*
12th	78.2%	25.2%	↓ 67.8%*

Frequent Cigarette Smoking  
(Public High School)

	1998	2021	% Change
Overall	14.3%	1.0%	↓ 93.0%*
Female	11.6%	0.4%	↓ 96.6%*
Male	17.3%	1.5%	↓ 91.3%*
White	23.2%	1.8%	↓ 92.2%*
Black	3.4%	0.3%	↓ 91.2%*
9th	8.3%	0.7%	↓ 91.6%*
10th	16.7%	1.5%	↓ 91.0%*
11th	17.9%	0.5%	↓ 97.2%*
12th	16.1%	1.3%	↓ 91.9%*

Current Cigarette Smoking  
(Public Middle School)

	1998	2021	% Change
Overall	20.6%	2.1%	↓ 89.8%*
Female	18.2%	1.8%	↓ 90.1%*
Male	23.0%	2.4%	↓ 89.6%*
White	22.8%	1.7%	↓ 92.5%*
Black	17.6%	2.6%	↓ 85.2%*
6th	11.9%	2.0%	↓ 83.2%*
7th	21.8%	1.9%	↓ 91.3%*
8th	25.8%	2.4%	↓ 90.7%*

Ever Tried a Cigarette  
(Public Middle School)

	1998	2021	% Change
Overall	54.3%	13.0%	↓ 76.1%*
Female	51.2%	12.2%	↓ 76.2%*
Male	57.3%	13.9%	↓ 75.7%*
White	52.0%	14.0%	↓ 73.1%*
Black	56.3%	11.7%	↓ 79.2%*
6th	41.8%	10.9%	↓ 73.9%*
7th	55.0%	12.6%	↓ 77.1%*
8th	64.0%	15.8%	↓ 75.3%*

Frequent Cigarette Smoking  
(Public Middle School)

	1998	2021	% Change
Overall	5.2%	0.3%	↓ 94.2%*
Female	3.6%	0.1%	↓ 97.2%*
Male	6.8%	0.5%	↓ 92.7%*
White	6.4%	0.4%	↓ 93.8%*
Black	2.6%	0.3%	↓ 88.5%*
6th	1.2%	0.2%	ns
7th	5.1%	0.1%	↓ 98.0%*
8th	7.1%	0.5%	↓ 93.0%*

## KEY

{ ↓ decrease (\*) significant  
 { ↑ increase (ns) non-significant }

# Change in Smokeless Tobacco Use

Current Smokeless Tobacco Use  
(Public High School)

	1998	2021	% Change
Overall	9.4%	2.7%	↓ 71.3%*
Female	1.3%	0.8%	ns
Male	18.1%	4.6%	↓ 74.6%*
White	16.0%	4.7%	↓ 70.6%*
Black	1.5%	1.1%	ns
9th	9.1%	2.2%	↓ 75.8%*
10th	11.7%	2.5%	↓ 78.6%*
11th	6.8%	2.9%	ns
12th	8.6%	3.3%	ns

Ever Tried Smokeless Tobacco  
(Public High School)

	1998	2021	% Change
Overall	26.2%	7.7%	↓ 70.6%*
Female	11.4%	2.2%	↓ 80.7%*
Male	42.2%	13.0%	↓ 69.2%*
White	38.5%	13.1%	↓ 66.0%*
Black	11.6%	2.8%	↓ 75.9%*
9th	25.7%	7.2%	↓ 72.0%*
10th	27.0%	6.0%	↓ 77.8%*
11th	25.4%	7.9%	↓ 68.9%*
12th	25.8%	10.1%	↓ 60.9%*

Frequent Smokeless Tobacco Use  
(Public High School)

	1998	2021	% Change
Overall	3.7%	0.9%	↓ 75.7%*
Female	0.4%	0.0%	ns
Male	7.3%	1.9%	↓ 74.0%*
White	6.4%	1.5%	↓ 76.6%*
Black	0.2%	0.5%	ns
9th	2.2%	0.3%	ns
10th	5.5%	1.0%	ns
11th	3.7%	0.7%	ns
12th	3.5%	1.9%	ns

Current Smokeless Tobacco Use  
(Public Middle School)

	1998	2021	% Change
Overall	9.6%	1.9%	↓ 80.2%*
Female	4.2%	1.3%	↓ 69.1%*
Male	14.8%	2.7%	↓ 81.8%*
White	12.7%	3.5%	↓ 72.4%*
Black	4.8%	0.7%	↓ 85.4%*
6th	6.5%	2.1%	↓ 67.7%*
7th	8.7%	1.7%	↓ 80.5%*
8th	12.0%	2.1%	↓ 82.5%*

Ever Tried Smokeless Tobacco  
(Public Middle School)

	1998	2021	% Change
Overall	18.1%	7.2%	↓ 60.2%*
Female	7.2%	4.7%	ns
Male	28.5%	9.8%	↓ 65.6%*
White	24.0%	12.9%	↓ 46.3%*
Black	10.5%	2.8%	↓ 73.3%*
6th	12.9%	7.0%	ns
7th	19.0%	7.5%	↓ 60.5%*
8th	20.7%	7.2%	↓ 65.2%*

Frequent Smokeless Tobacco Use  
(Public Middle School)

	1998	2021	% Change
Overall	2.2%	0.3%	↓ 86.4%*
Female	0.9%	0.1%	ns
Male	3.5%	0.6%	↓ 82.9%*
White	2.4%	0.6%	ns
Black	1.0%	0.2%	ns
6th	0.5%	0.2%	ns
7th	1.7%	0.0%	ns
8th	3.0%	0.8%	ns

## KEY

{↓} decrease (\*) significant

{↑} increase (ns) non-significant



# Change in Cigar Smoking

Current Cigar Smoking  
(Public High School)

	1998	2021	% Change
Overall	22.3%	6.4%	↓ 71.3%*
Female	13.8%	5.8%	↓ 58.0%*
Male	31.1%	7.1%	↓ 77.2%*
White	23.5%	4.9%	↓ 79.2%*
Black	20.1%	8.2%	↓ 59.2%*
9th	18.9%	5.5%	↓ 70.9%*
10th	24.7%	5.5%	↓ 77.7%*
11th	23.8%	6.8%	↓ 71.4%*
12th	22.0%	8.2%	↓ 62.7%*

Ever Tried a Cigar  
(Public High School)

	1998	2021	% Change
Overall	53.0%	17.3%	↓ 67.4%*
Female	43.2%	16.8%	↓ 61.1%*
Male	63.5%	16.8%	↓ 73.5%*
White	54.4%	15.8%	↓ 71.0%*
Black	51.1%	19.2%	↓ 62.4%*
9th	50.0%	16.8%	↓ 66.4%*
10th	49.9%	13.1%	↓ 73.8%*
11th	57.5%	19.4%	↓ 66.3%*
12th	56.9%	20.2%	↓ 64.5%*

Frequent Cigar Smoking  
(Public High School)

	1998	2021	% Change
Overall	1.4%	1.3%	ns
Female	0.2%	0.7%	ns
Male	2.6%	1.9%	ns
White	1.5%	1.6%	ns
Black	0.9%	1.1%	ns
9th	1.1%	0.8%	ns
10th	1.8%	1.5%	ns
11th	1.0%	1.6%	ns
12th	1.4%	1.5%	ns

Current Cigar Smoking  
(Public Middle School)

	1998	2021	% Change
Overall	16.4%	3.2%	↓ 80.5%*
Female	12.3%	3.3%	↓ 73.2%*
Male	20.4%	3.1%	↓ 84.8%*
White	12.3%	2.5%	↓ 79.7%*
Black	19.9%	4.1%	↓ 79.4%*
6th	7.9%	2.7%	↓ 65.8%*
7th	17.1%	3.1%	↓ 81.9%*
8th	21.2%	3.9%	↓ 81.6%*

Ever Tried a Cigar  
(Public Middle School)

	1998	2021	% Change
Overall	32.5%	8.7%	↓ 73.2%*
Female	24.2%	8.2%	↓ 66.1%*
Male	40.7%	9.4%	↓ 76.9%*
White	29.2%	7.5%	↓ 74.3%*
Black	35.6%	9.8%	↓ 72.5%*
6th	19.2%	7.3%	↓ 62.0%*
7th	35.5%	8.8%	↓ 75.2%*
8th	40.2%	10.4%	↓ 74.1%*

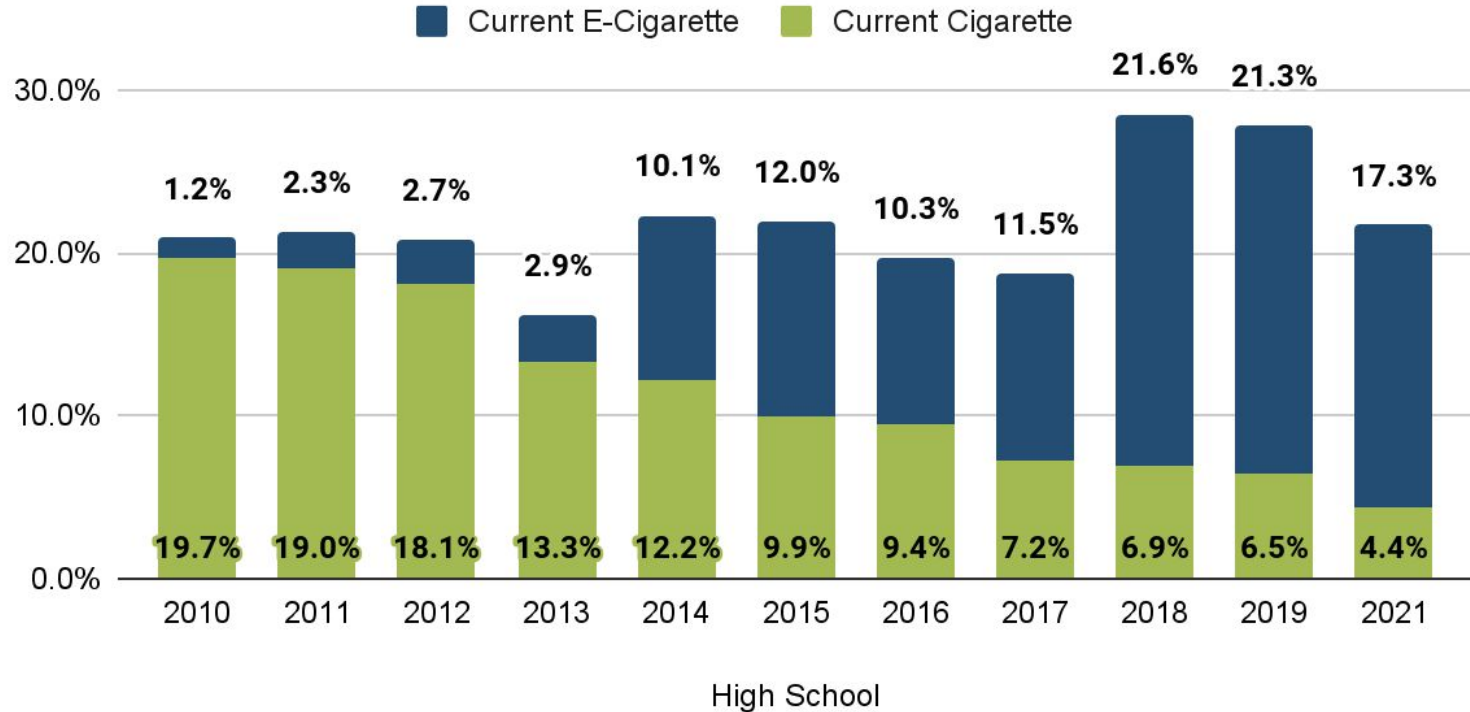
Frequent Cigar Smoking  
(Public Middle School)

	1998	2021	% Change
Overall	1.7%	0.6%	ns
Female	0.9%	0.6%	ns
Male	2.4%	0.7%	ns
White	1.3%	0.4%	ns
Black	1.7%	0.8%	ns
6th	0.2%	0.6%	ns
7th	1.0%	0.3%	ns
8th	1.9%	1.0%	ns

## KEY

{↓} decrease (\*) significant  
{↑} increase (ns) non-significant

# Past 30-Day Cigarette Smoking and E-Cigarettes Use, Mississippi Public High School Students

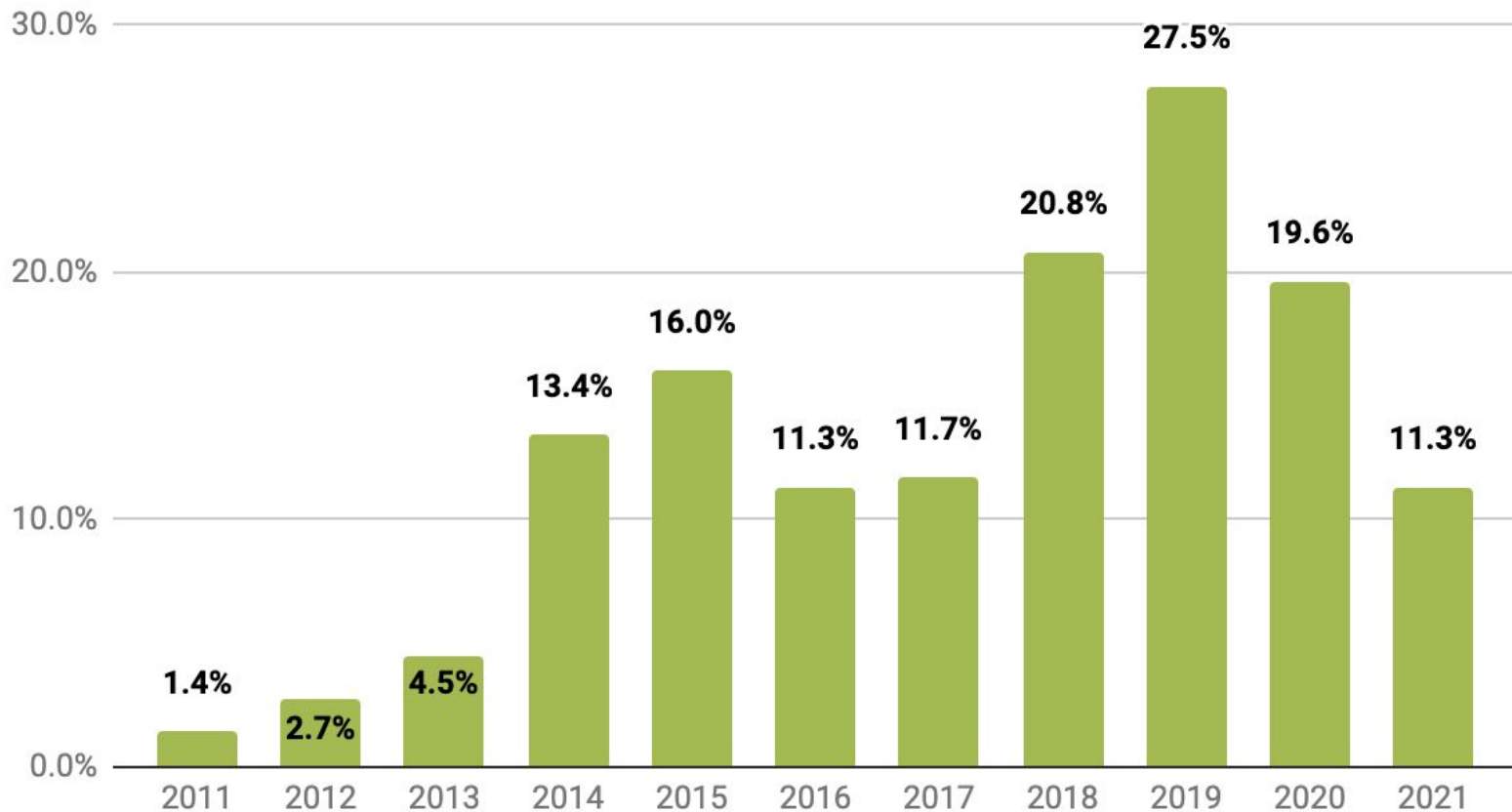


# National Youth Tobacco Survey 2019-2021

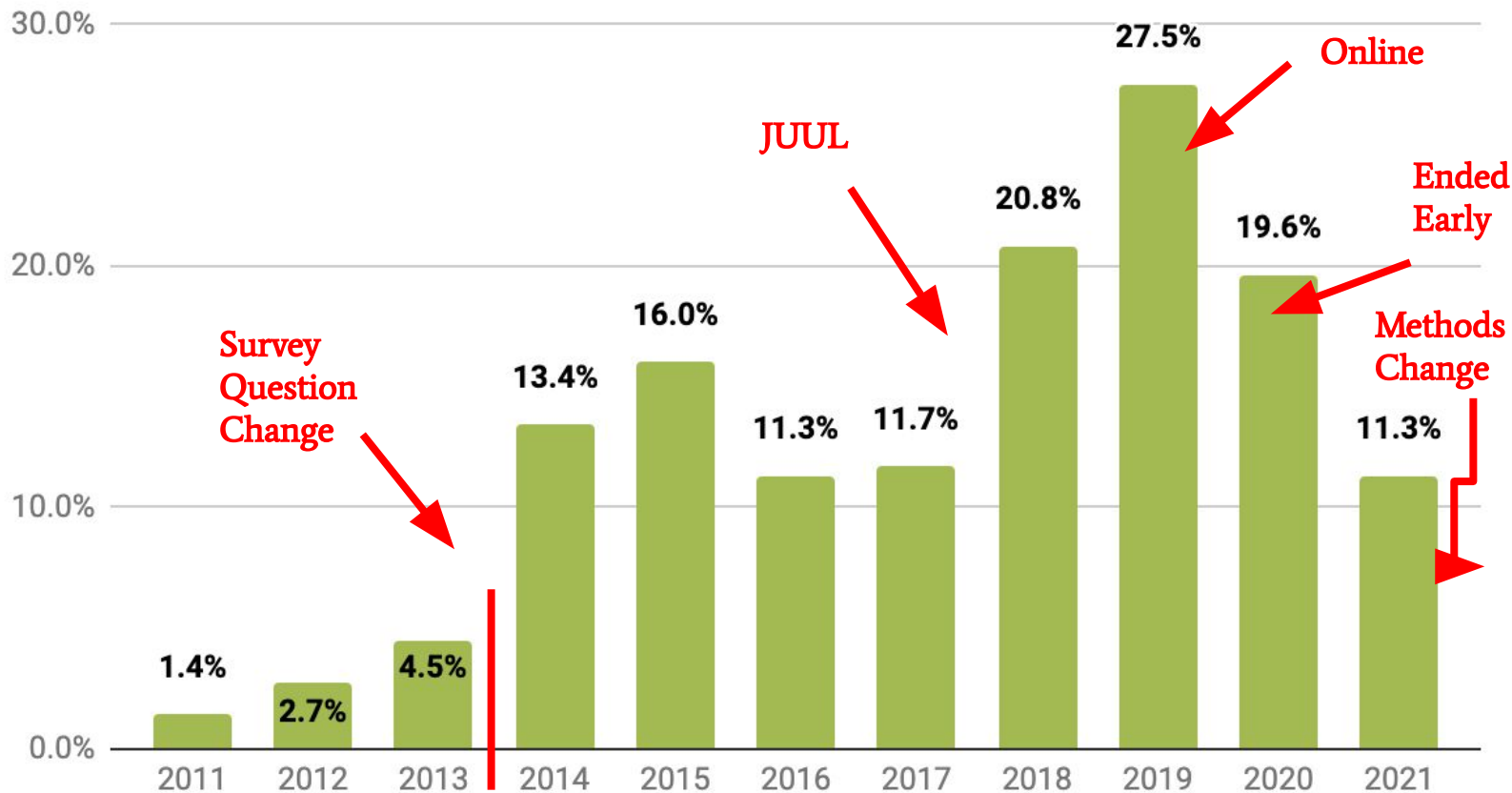
- 2019
  - Survey transitioned to 100% online
  - Survey taken at school
- 2020
  - Survey was ended 2 months early due to the pandemic
- 2021
  - Survey online
  - Survey taken at school or home



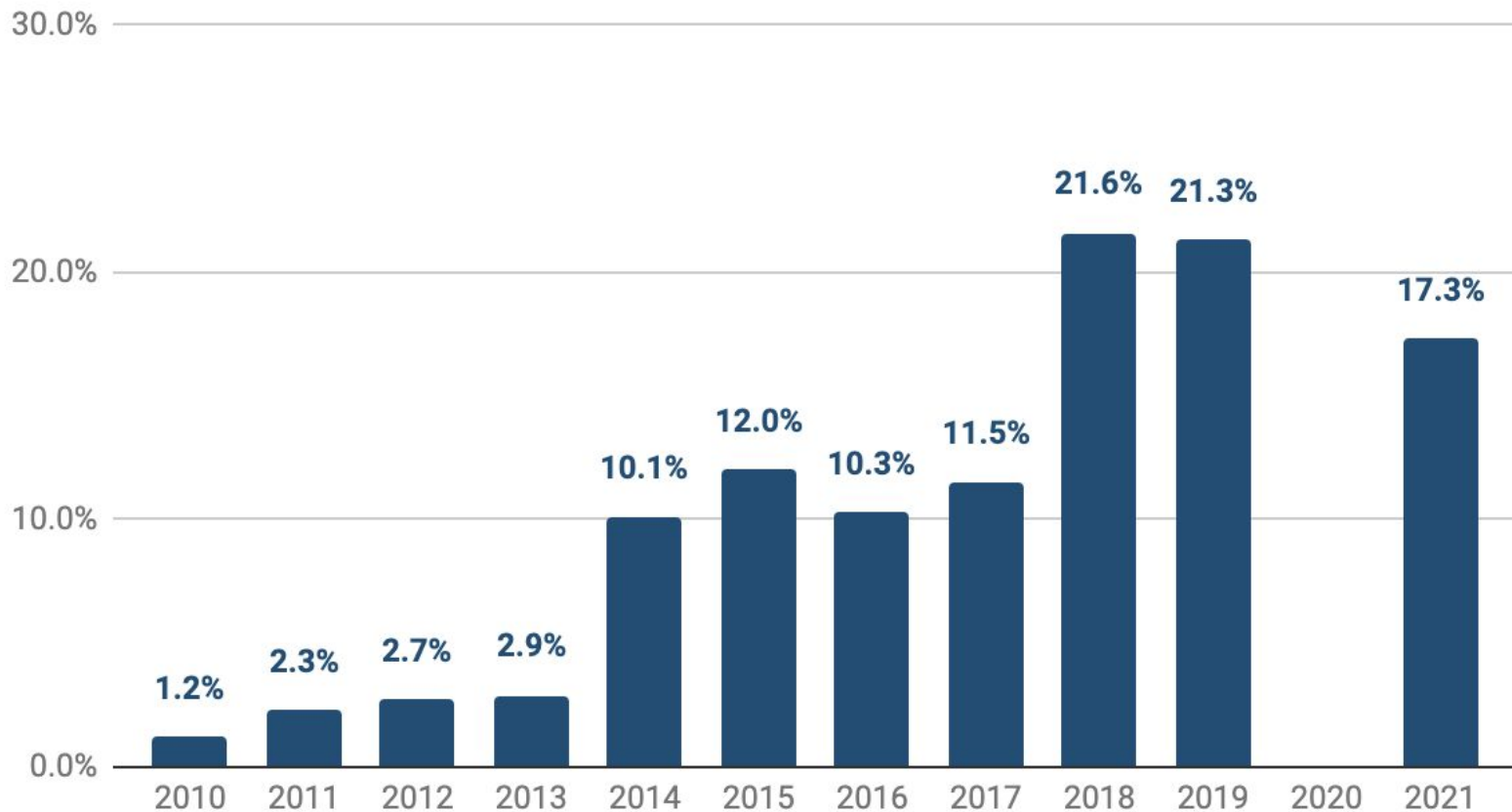
## Past 30-Day E-Cigarette Use, U.S. High School Students, NYTS



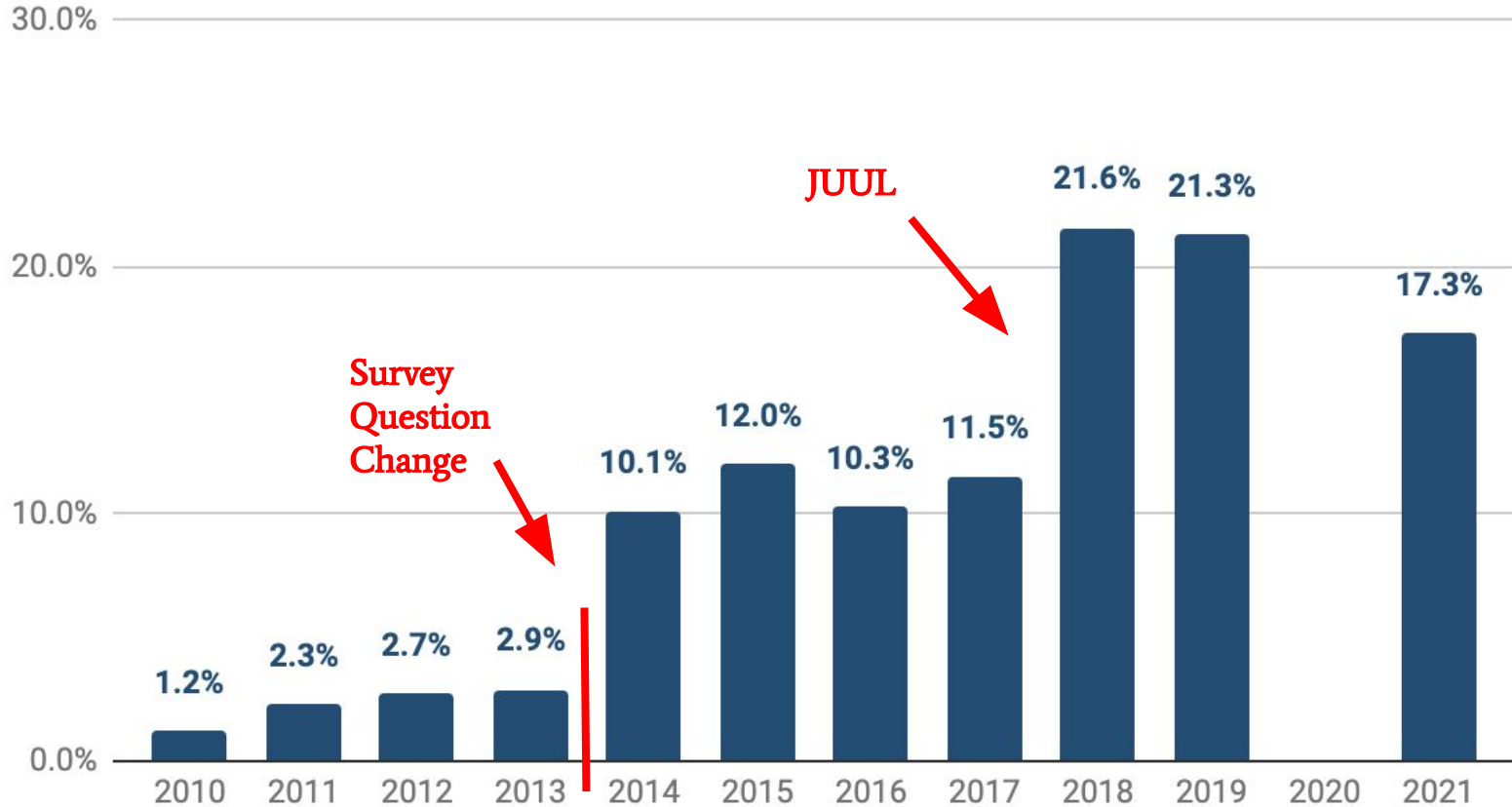
# Past 30-Day E-Cigarette Use, U.S. High School Students, NYTS



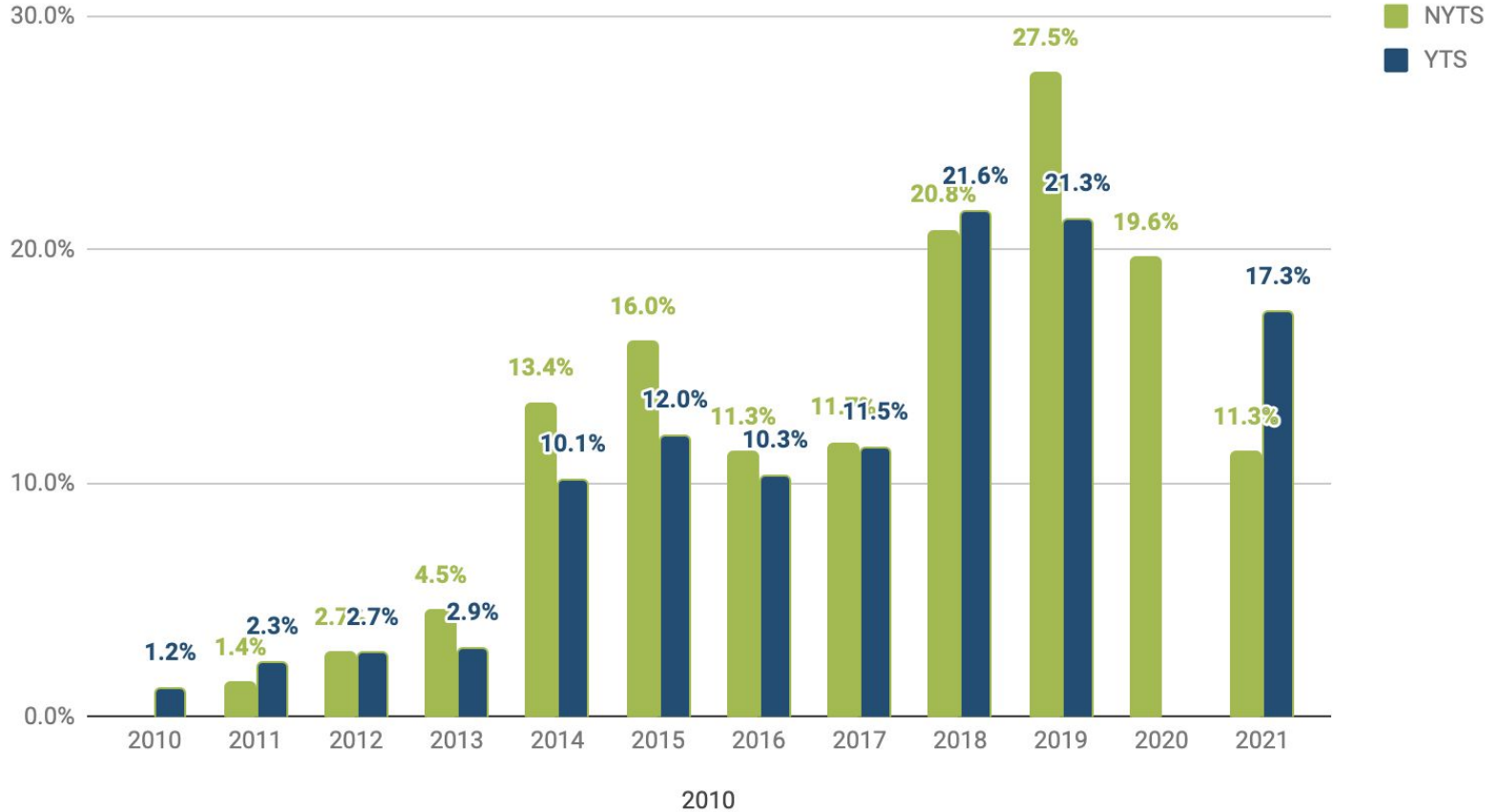
## Past 30 Day E-Cigarette Use, M.S. High School Students, YTS



# Past 30 Day E-Cigarette Use, M.S. High School Students, YTS

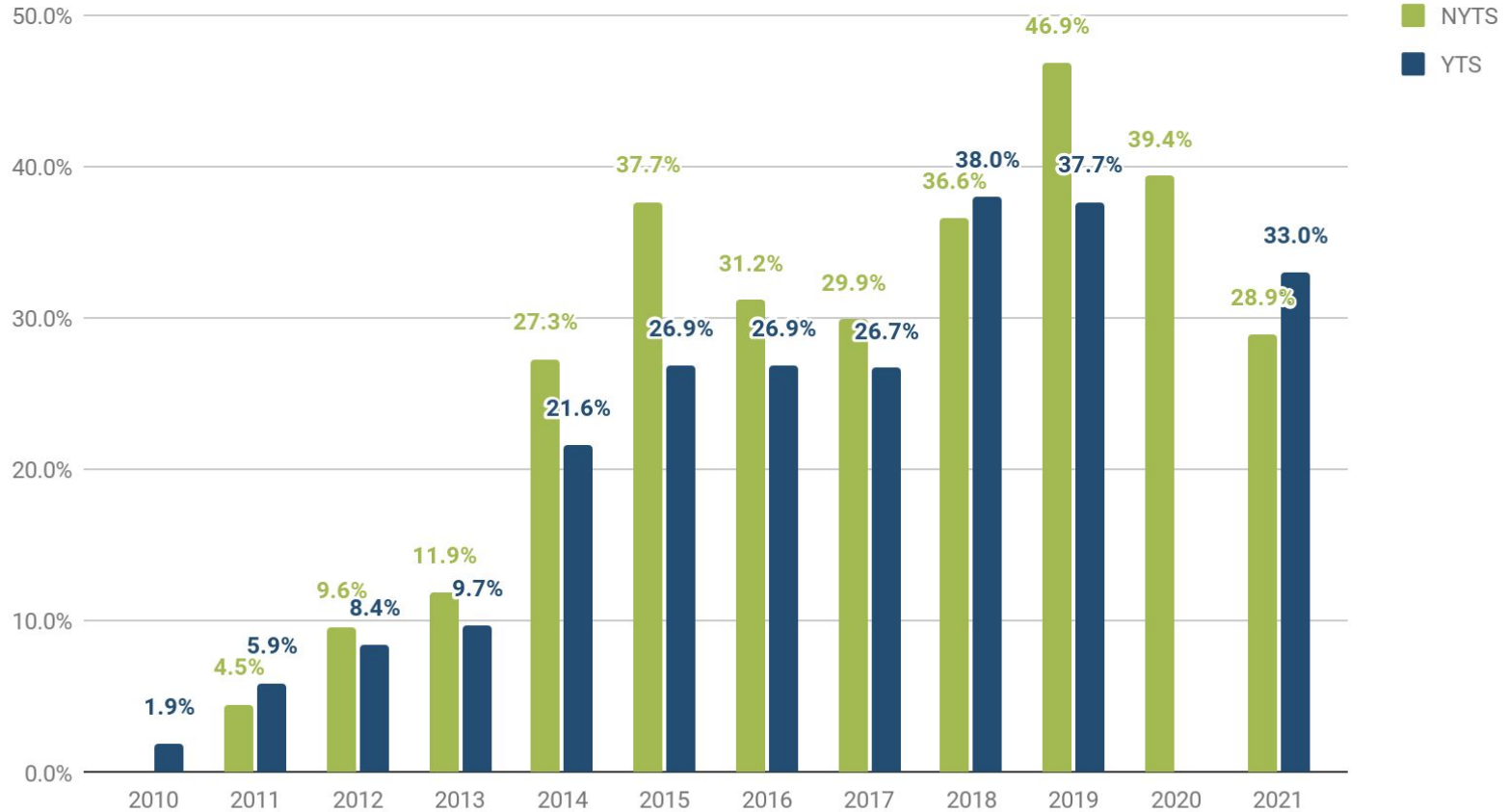


# High School Current E-Cigarette Use





## High School Ever E-Cigarette Use



# Marijuana Use

New for 2022 MS YTS

- 6 Questions have been added to the 2022 MS YTS survey
  - Prevalence (ever use)
  - Age of use
  - Frequency of use (current use)
  - Ways of obtaining (multiple choice and select **usual** source)
  - Cessation

For More Information  
[mstobaccodata.org](https://mstobaccodata.org)

For YTS Data Book

<https://mstobaccodata.org/wp-content/uploads/2022/07/YTS-publication-2022.pdf>