

2019

the mississippi
youth tobacco

S U R V E Y

20th Anniversary
1998-2018

mississippi tobacco data

table of contents

- ◀ table of contents...**page(1)**
- ▶ key outcomes {electronic cigarettes}...**page(2)**
- ▶ key outcomes {cigarettes}...**page(3)**
- ▶ key outcomes {smokeless tobacco & cigars}...**page(4)**
- ▶ {electronic cigarette use data}...**pages(5-7)**
 - ▶ current electronic cigarette use...**page(5)**
 - ▶ ever tried an electronic cigarette...**page(6)**
 - ▶ frequent electronic cigarette use...**page(7)**
- ▶ {cigarette smoking data}...**pages(8-10)**
 - ▶ current cigarette smoking...**page (8)**
 - ▶ ever tried a cigarette...**page (9)**
 - ▶ frequent cigarette smoking...**page (10)**
- ▶ {smokeless tobacco use data}...**pages(11-13)**
 - ▶ current smokeless tobacco use...**page(11)**
 - ▶ ever tried smokeless tobacco...**page(12)**
 - ▶ frequent smokeless tobacco use...**page(13)**
- ▶ {cigar smoking data}...**pages(14-16)**
 - ▶ current cigar smoking...**page(14)**
 - ▶ ever tried a cigar...**page(15)**
 - ▶ frequent cigar smoking...**page(16)**
- ▶ appendix {comparison charts}...**pages(17-20)**
 - ▶ change in electronic cigarette use...**page(17)**
 - ▶ change in cigarette smoking...**page(18)**
 - ▶ change in smokeless tobacco use...**page(19)**
 - ▶ change in cigar smoking...**page(20)**
- ▶ appendix {electronic cigarettes}...**pages(21-23)**
- ▶ appendix {cigarettes}...**pages(24-29)**
- ▶ appendix {smokeless tobacco}...**pages(30-35)**
- ▶ appendix {cigars}...**pages(36-41)**
- ▶ methods + contact us...**page(42)**


THIS REPORT WAS PRODUCED BY SCIENTISTS AT THE SOCIAL SCIENCE RESEARCH CENTER OF MISSISSIPPI STATE UNIVERSITY. THIS PROJECT IS FUNDED BY A GRANT OF THE MISSISSIPPI STATE DEPARTMENT OF HEALTH. ANY OPINIONS IMPLIED OR EXPRESSED HERE ARE THOSE OF THE AUTHORS AND DO NOT NECESSARILY REFLECT THOSE OF THE MISSISSIPPI STATE DEPARTMENT OF HEALTH OR OF MISSISSIPPI STATE UNIVERSITY.

{electronic cigarettes}

- * We added e-cigarette use questions to the YTS in 2010. Use among youth was very low until 2014. From 2014 through 2017, the prevalence of past 30-day e-cigarette use remained at approximately 10%. Coinciding with the popularity of pod-based e-cigarettes, e-cigarette use among youth almost doubled from 2017 to 2018.
- * Current e-cigarette use among public middle school students has increased by 1083% since 2010, leading to 7,096 more young e-cigarette users.
- * Current e-cigarette use among public high school students has increased by 1700% since 2010, leading to 26,623 more young e-cigarette users.



key outcomes

- 
- * The prevalence of having ever tried using e-cigarettes has increased by 1744% since 2010, leading to 17,138 more middle school students who have tried using e-cigarettes.
 - * The prevalence of having ever tried using e-cigarettes has increased by 1900% since 2010, leading to 47,112 more high school students who have tried using e-cigarettes.
 - * Frequent e-cigarette use has increased by 313% since 2014, leading to 6,525 more high school students who have used an e-cigarette on at least 20 of the past 30 days.



key outcomes

{cigarettes}

- * Tobacco use among Mississippi youth has decreased substantially since statewide tobacco control programs were implemented in 1999.
 - * Current smoking among public middle school students has decreased by 88% since 1998, leading to 19,758 fewer young smokers.
 - * Current smoking among public high school students has decreased by 77% since 1998, leading to 30,538 fewer young smokers.
 - * The prevalence of having ever tried smoking has decreased by 76% since 1998, leading to 45,193 fewer middle school students who have tried smoking.
-
- * The prevalence of having ever tried smoking has decreased by 65% since 1998, leading to 64,077 fewer high school students who have tried smoking.
 - * Frequent smoking has decreased by 96% since 1998, leading to 5,458 fewer middle school students who have smoked a cigarette on at least 20 of the past 30 days.
 - * Frequent smoking has decreased by 87% since 1998, leading to 16,182 fewer high school students who have smoked a cigarette on at least 20 of the past 30 days.



{ smokeless tobacco }

- * Current smokeless tobacco (SLT) use among public middle school students has decreased by 81% since 1998, leading to 8,515 fewer young SLT users.
- * The prevalence of having ever tried SLT has decreased by 67% since 1998, leading to 13,209 fewer middle school students who have tried SLT.
- * The prevalence of having ever tried SLT has decreased by 51% since 1998, leading to 17,357 fewer high school students who have tried SLT.
- * Frequent SLT use has decreased by 86% since 1998, leading to 2,074 fewer middle school students who have used SLT on at least 20 of the past 30 days.

{ cigars }

- * Current cigar smoking among public middle school students has decreased by 76% since 1998, leading to 13,536 fewer young cigar smokers.
- * Current cigar smoking among public high school students has decreased by 54% since 1998, leading to 15,660 fewer young cigar smokers.



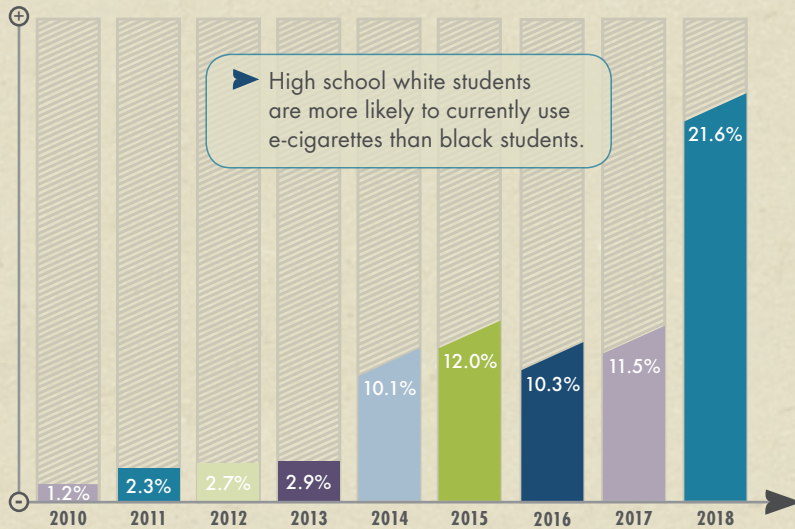
key outcomes

- * The prevalence of having ever tried cigar smoking has decreased by 66% since 1998, leading to 23,579 fewer middle school students who have tried cigar smoking.
- * The prevalence of having ever tried cigar smoking has decreased by 48% since 1998, leading to 33,409 fewer high school students who have tried cigar smoking.
- * Frequent cigar smoking has decreased by 94% since 1998, leading to 1,747 fewer middle school students who have smoked a cigar on at least 20 of the past 30 days.

current electronic cigarette use

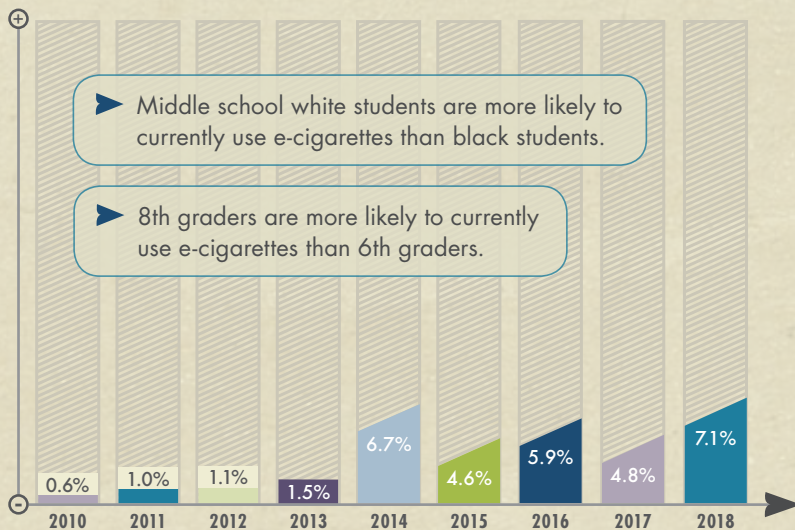
MISSISSIPPI PUBLIC SCHOOLS

HIGH SCHOOLS {2010-2018}



- * In 2018, *28,189 Mississippi public high school students* had used e-cigarettes on at least one of the past 30 days.
- * The prevalence of current e-cigarette use has *increased by 1,700%* since 2010, leading to 26,623 more young e-cigarette users.
- * In the past year, the prevalence of current e-cigarette use *has risen by 88%*.

MIDDLE SCHOOLS {2010-2018}



- * In 2018, *9,266 Mississippi public middle school students* had used e-cigarettes on at least one of the past 30 days.
- * The prevalence of current e-cigarette use has *increased by 1,083%* since 2010, leading to 8,483 more young e-cigarette users.
- * In the past year, the prevalence of current e-cigarette use *has risen by 48%*.

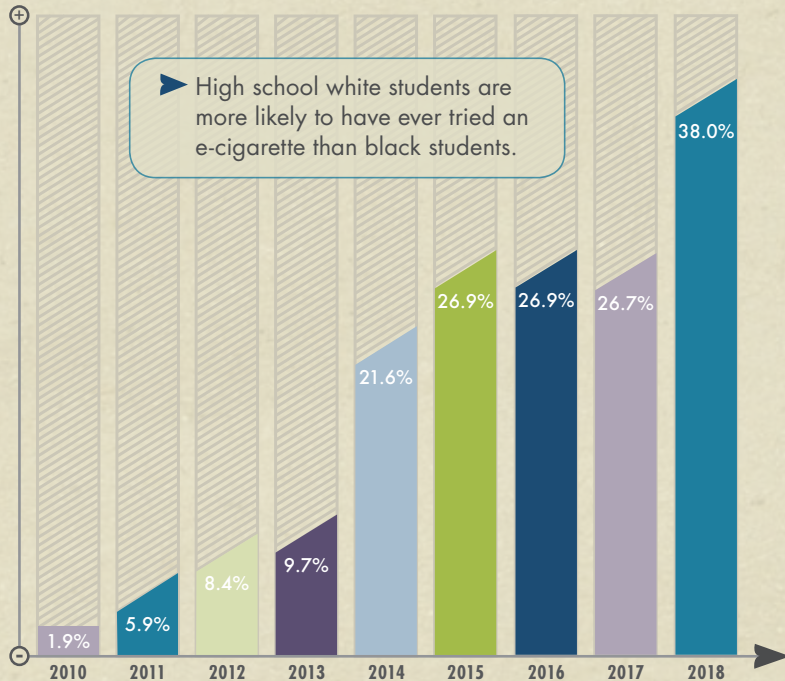
► Significant Demographic Differences

Changes between 2013 and 2014 in the wording and placement of questions about the use of e-cigarettes might have had an impact on reported use of these products.

ever tried an electronic cigarette

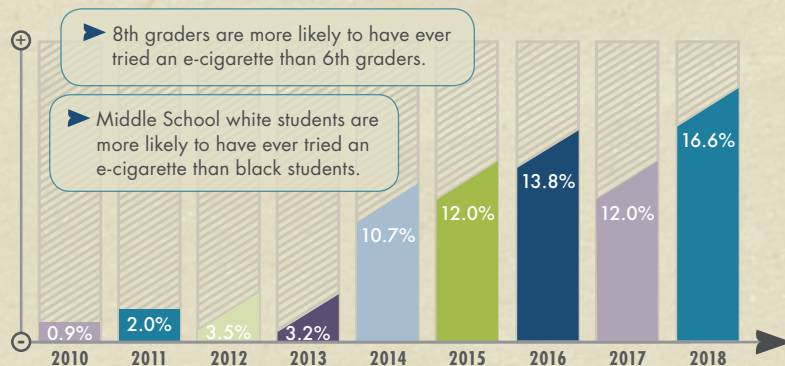
MISSISSIPPI PUBLIC SCHOOLS

HIGH SCHOOLS {2010-2018}



- * In 2018, *49,592 Mississippi public high school students* had tried at least one e-cigarette.
- * The prevalence of having ever tried an e-cigarette has *increased by 1,900%* since 2010, leading to 47,112 more high school students who have tried using e-cigarettes.
- * In the past year, the prevalence of having ever tried using e-cigarettes *has risen by 42%*.

MIDDLE SCHOOLS {2010-2018}



- * In 2018, *21,664 Mississippi public middle school students* had tried at least one e-cigarette.
- * The prevalence of having ever tried an e-cigarette has *increased by 1,744%* since 2010, leading to 20,489 more middle school students who have tried using e-cigarettes.
- * In the past year, the prevalence of having ever tried using e-cigarettes *has risen by 38%*.

► Significant Demographic Differences

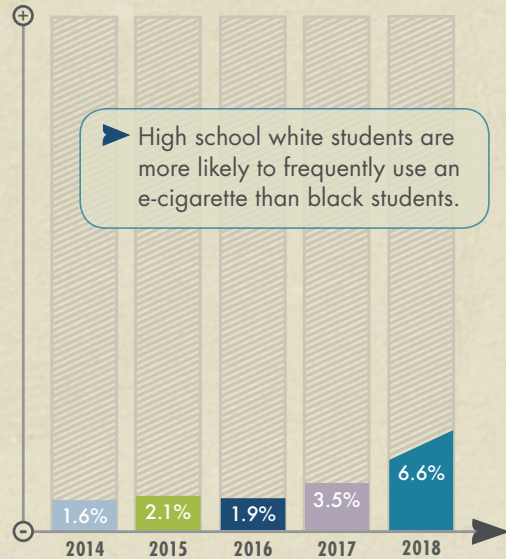
Changes between 2013 and 2014 in the wording and placement of questions about the use of e-cigarettes might have had an impact on reported use of these products.



frequent electronic cigarette use

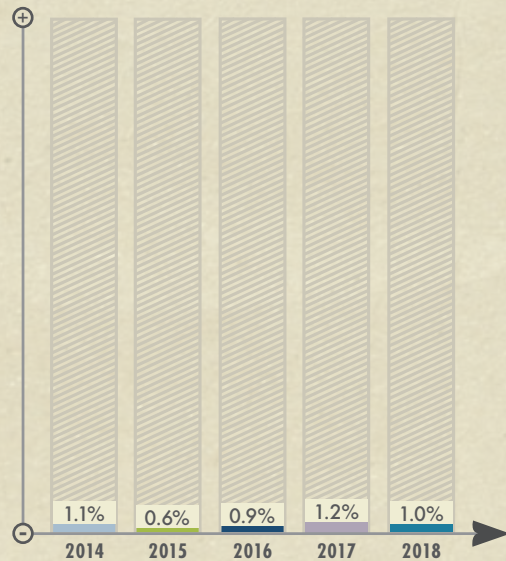
MISSISSIPPI PUBLIC SCHOOLS

HIGH SCHOOLS {2014-2018}



- * In 2018, *8,613 Mississippi public high school students* had used e-cigarettes on at least 20 of the past 30 days.
- * The prevalence of frequent e-cigarette use has *increased by 313%* since 2014, leading to 6,525 more high school students who are frequent e-cigarette users.
- * In the past year, the prevalence of frequent e-cigarette use *has risen by 89%*.

MIDDLE SCHOOLS {2014-2018}

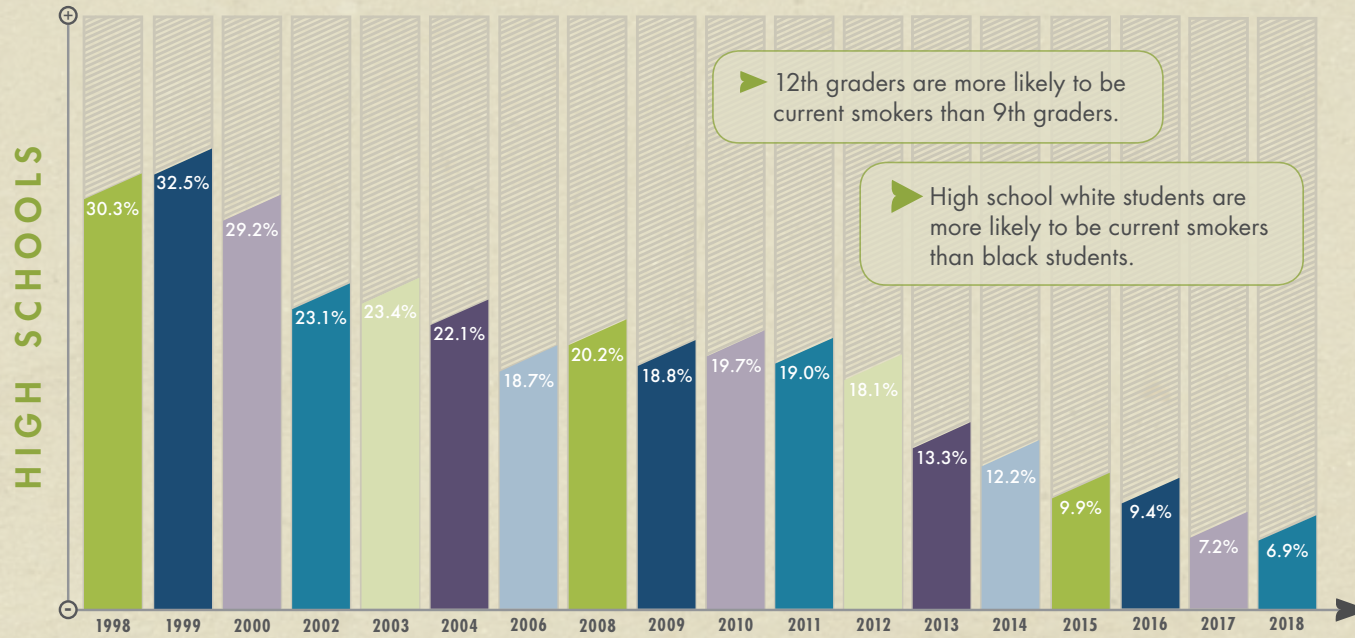


- * In 2018, *1,305 Mississippi public middle school students* had used e-cigarettes on at least 20 of the past 30 days.
- * The prevalence of frequent e-cigarette use *has not changed significantly* since 2014.
- * In the past year, the prevalence of frequent e-cigarette use *has not changed significantly*.

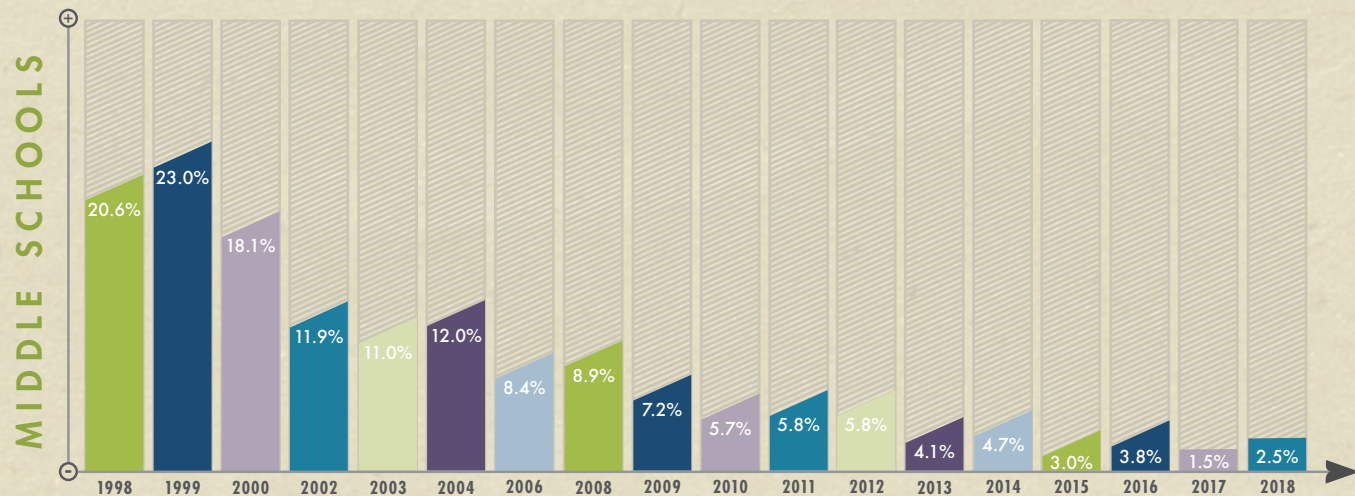
Changes between 2013 and 2014 in the wording and placement of questions about the use of e-cigarettes might have had an impact on reported use of these products.

current cigarette smoking

MISSISSIPPI PUBLIC SCHOOLS



- * In 2018, *9,005 Mississippi public high school students* had smoked cigarettes on at least one of the past 30 days.
- * The prevalence of current smoking has *decreased by 77%* since 1998, leading to 30,538 fewer young smokers.
- * In the past year, the prevalence of current smoking *has not changed significantly*.



- * In 2018, *2,729 Mississippi public middle school students* had smoked cigarettes on at least one of the past 30 days.
- * The prevalence of current smoking has *decreased by 88%* since 1998, leading to 19,758 fewer young smokers.
- * In the past year, the prevalence of current smoking *has not changed significantly*.

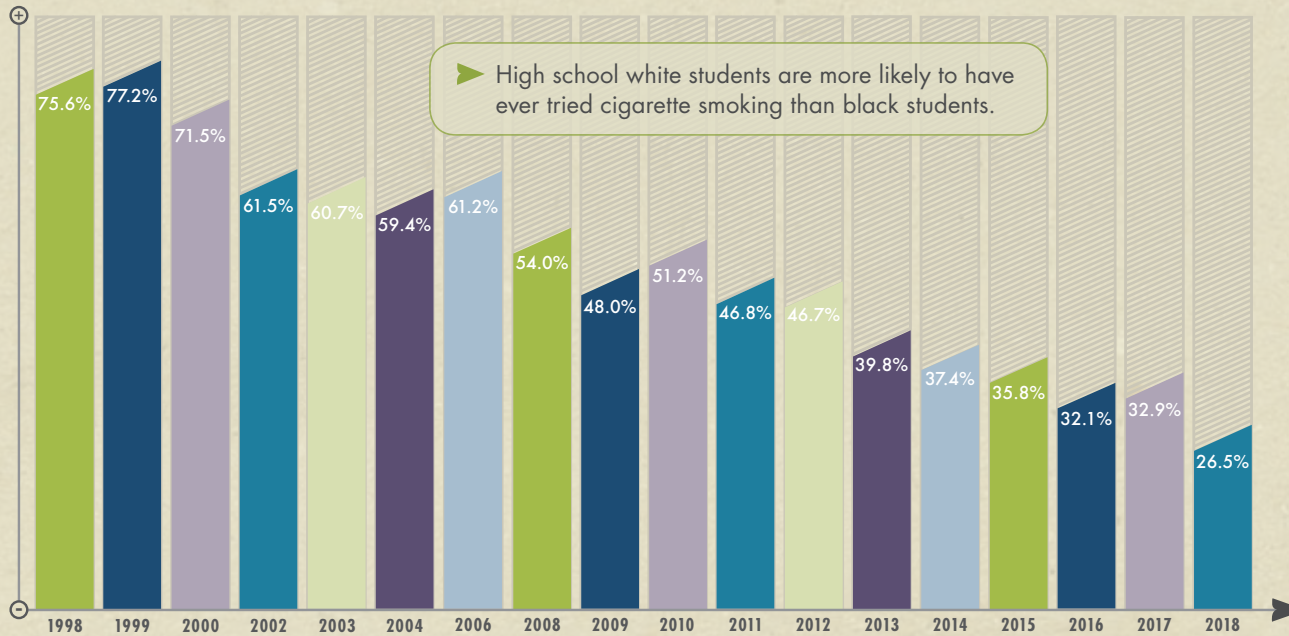
Significant Demographic Differences



ever tried a cigarette

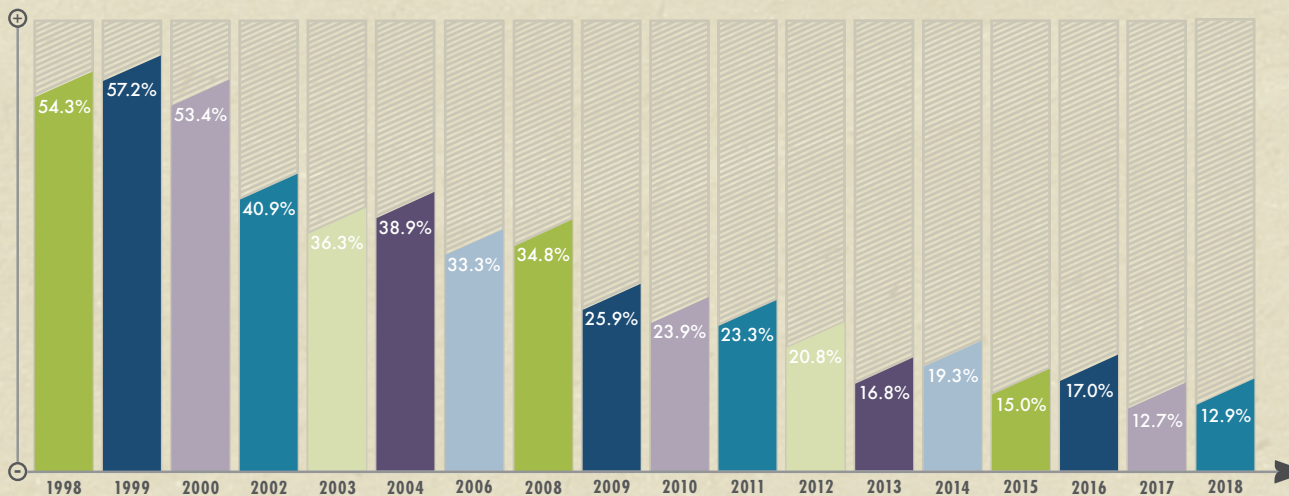
MISSISSIPPI PUBLIC SCHOOLS

HIGH SCHOOLS



- * In 2018, **34,584 Mississippi public high school students** had tried at least one cigarette.
- * The prevalence of having ever tried a cigarette has **decreased by 65%** since 1998, leading to 64,077 fewer high school students who have tried smoking.
- * In the past year, the prevalence of having ever tried smoking **has not changed significantly**.

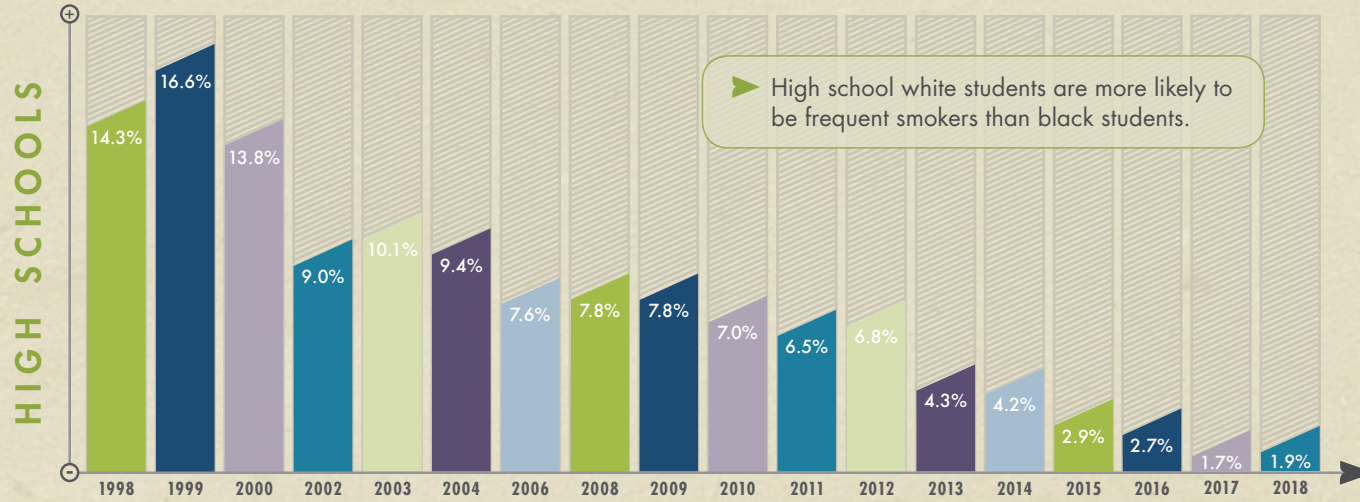
MIDDLE SCHOOLS



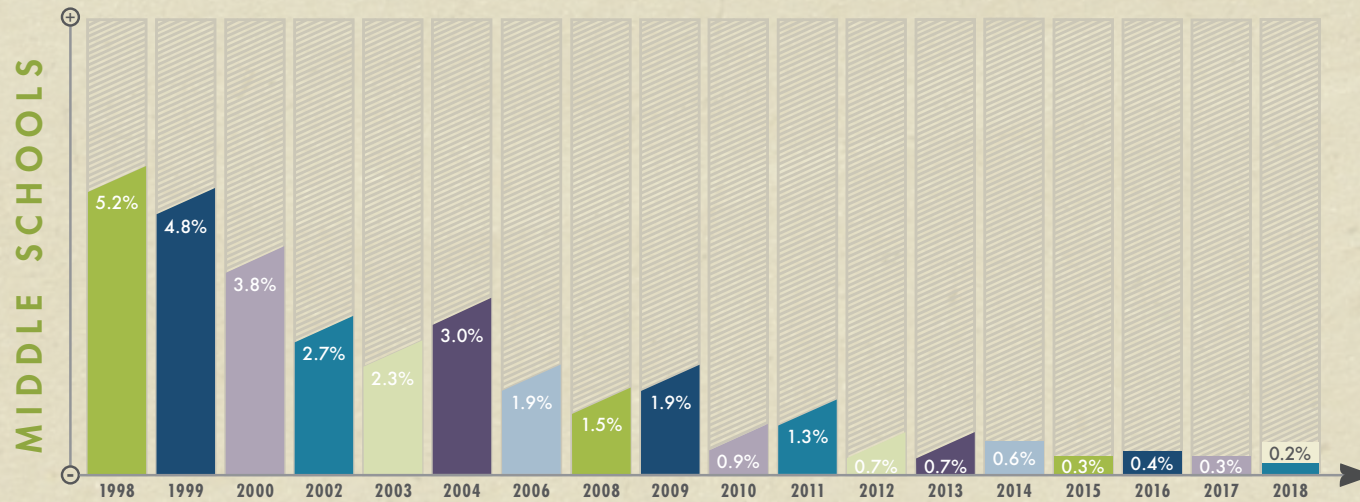
- * In 2018, **14,082 Mississippi public middle school students** had tried at least one cigarette.
- * The prevalence of having ever tried a cigarette has **decreased by 76%** since 1998, leading to 45,193 fewer middle school students who have tried smoking.
- * In the past year, the prevalence of having ever tried smoking **has not changed significantly**.

frequent cigarette smoking

MISSISSIPPI PUBLIC SCHOOLS



- * In 2018, **2,480 Mississippi public high school students** had smoked cigarettes on at least 20 of the past 30 days.
- * The prevalence of frequent smoking has **decreased by 87%** since 1998, leading to 16,182 fewer high school students who are frequent smokers.
- * In the past year, the prevalence of frequent smoking **has not changed significantly**.



- * In 2018, **218 Mississippi public middle school students** had smoked cigarettes on at least 20 of the past 30 days.
- * The prevalence of frequent smoking has **decreased by 96%** since 1998, leading to 5,458 fewer middle school students who are frequent smokers.
- * In the past year, the prevalence of frequent smoking **has not changed significantly**.

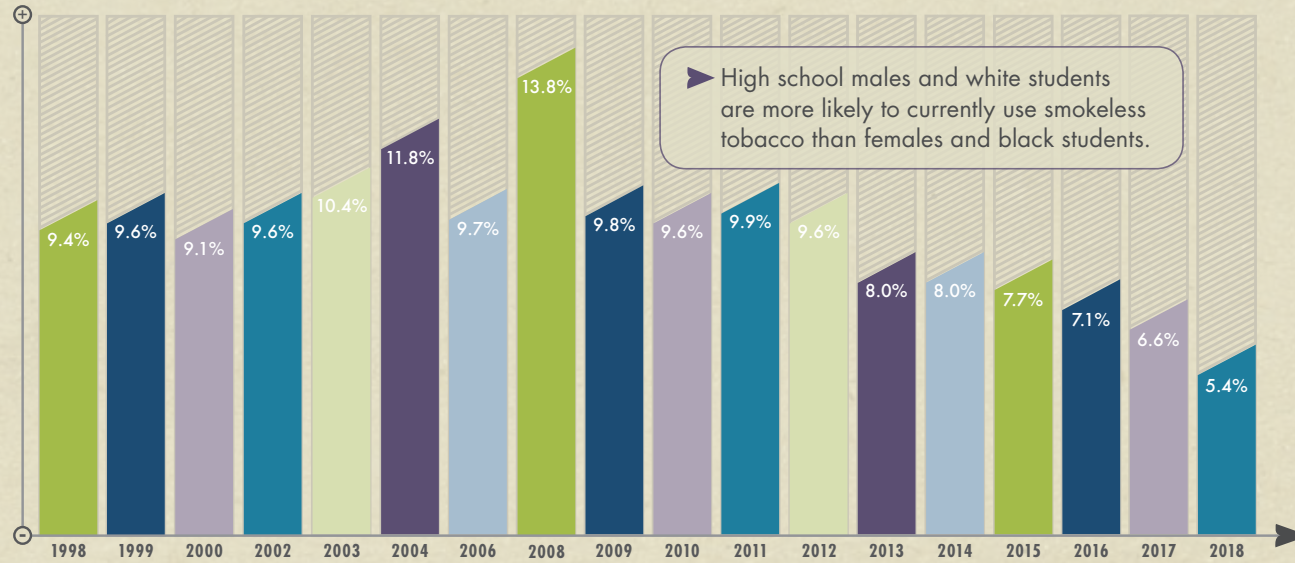
➤ Significant Demographic Differences



current smokeless tobacco use

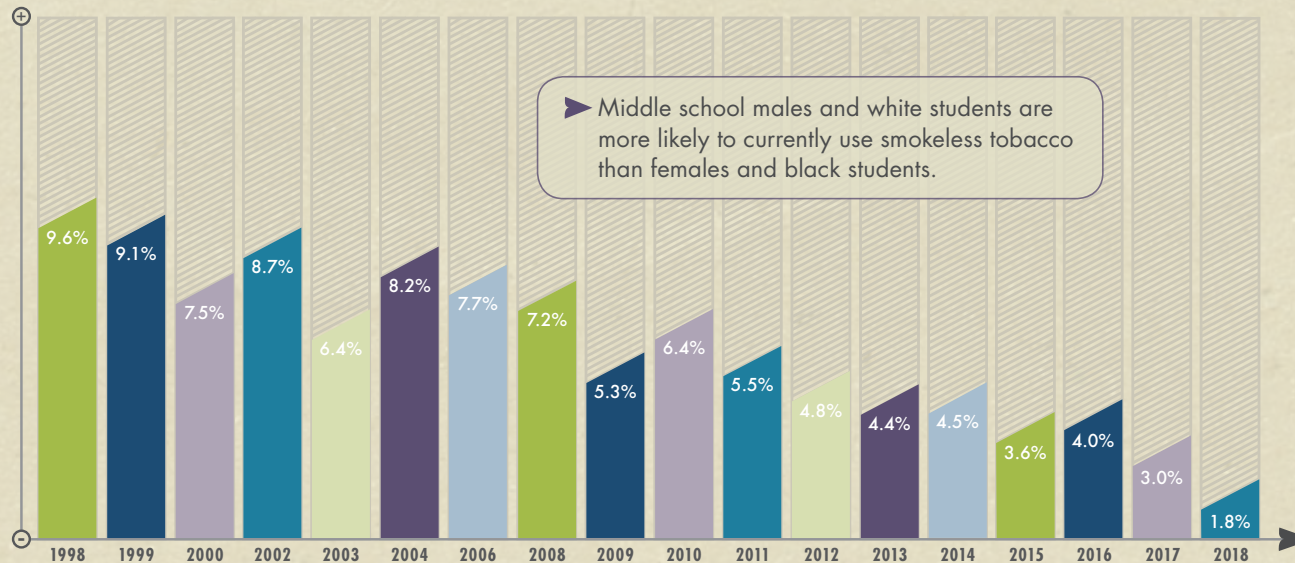
MISSISSIPPI PUBLIC SCHOOLS

HIGH SCHOOLS



- * In 2018, **7,047 Mississippi public high school students** had used SLT on at least one of the past 30 days.
- * Since 1998, the prevalence of current SLT use *has not changed significantly*.
- * In the past year, the prevalence of current SLT use *has not changed significantly*.

MIDDLE SCHOOLS

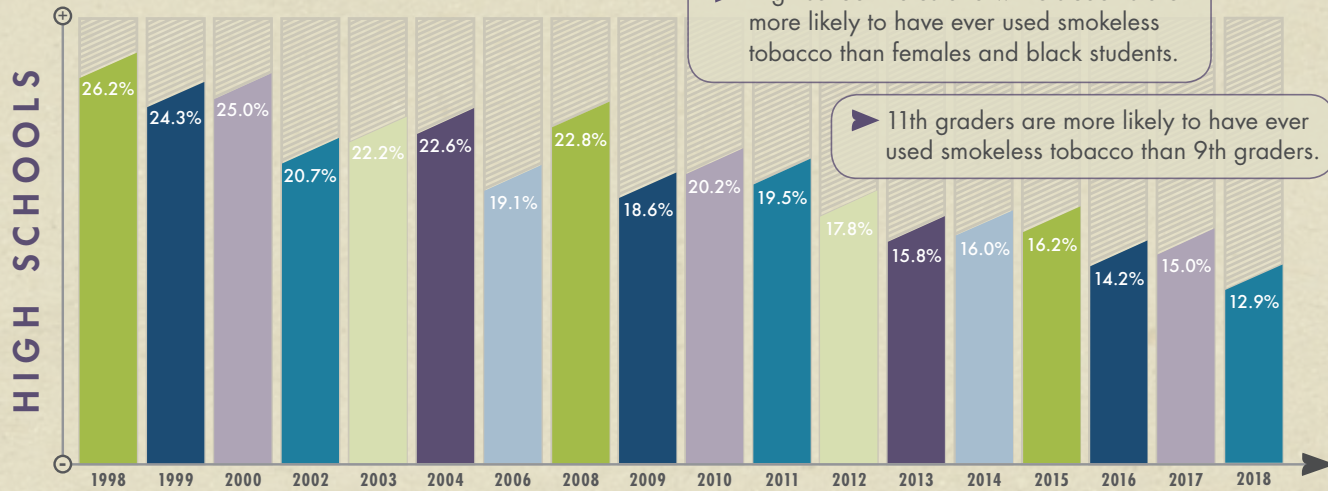


- * In 2018, **1,965 Mississippi public middle school students** had used SLT on at least one of the past 30 days.
- * The prevalence of current SLT use has **decreased by 81%** since 1998, leading to 8,515 fewer young SLT users.
- * In the past year, the prevalence of current SLT use *has not changed significantly*.

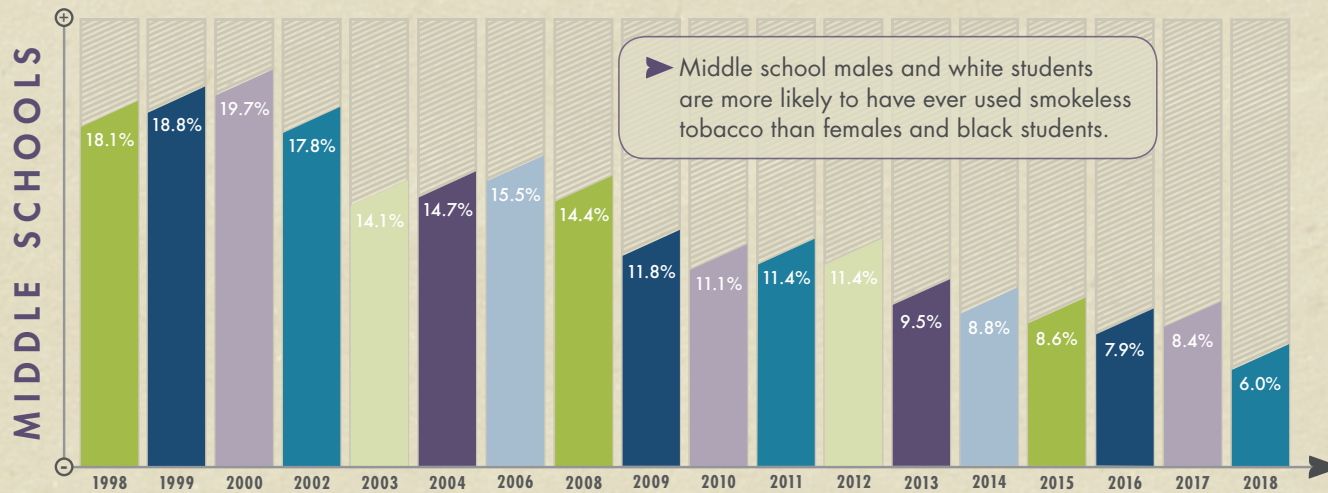
Significant Demographic Differences

ever tried smokeless tobacco

MISSISSIPPI PUBLIC SCHOOLS



- * In 2018, **16,835 Mississippi public high school students** had tried SLT at least one time.
- * The prevalence of having ever tried SLT has **decreased by 51%** since 1998, leading to 17,357 fewer high school students who have tried SLT.
- * In the past year, the prevalence of having ever tried SLT **has not changed significantly**.

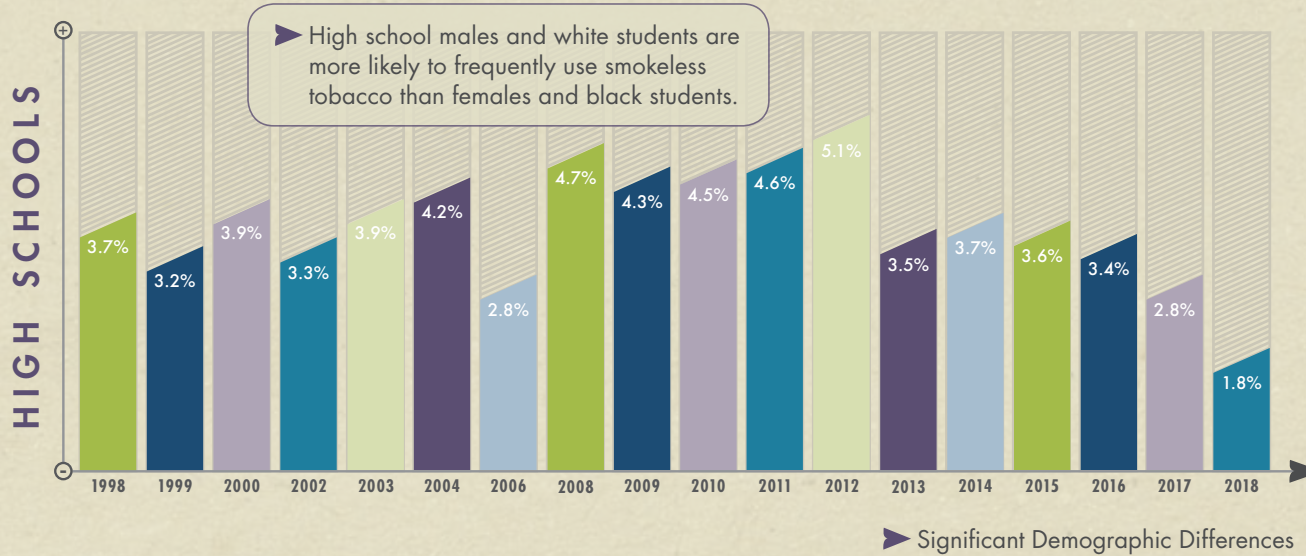


- * In 2018, **6,550 Mississippi public middle school students** had tried SLT at least one time.
- * The prevalence of having ever tried SLT has **decreased by 67%** since 1998, leading to 13,209 fewer middle school students who have tried SLT.
- * In the past year, the prevalence of having ever tried SLT **has not changed significantly**.

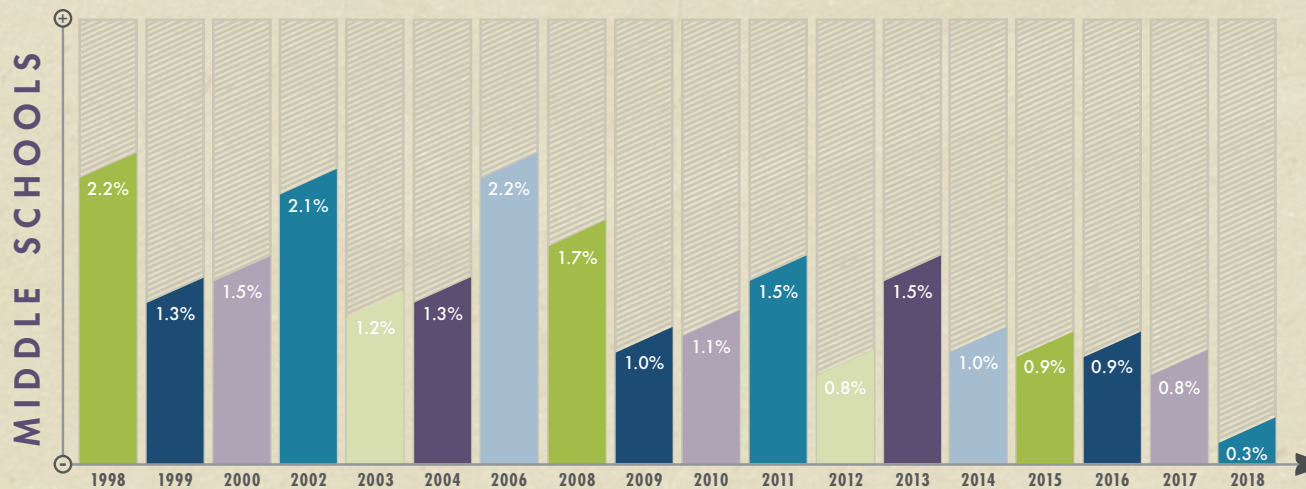
► Significant Demographic Differences

frequent smokeless tobacco use

MISSISSIPPI PUBLIC SCHOOLS



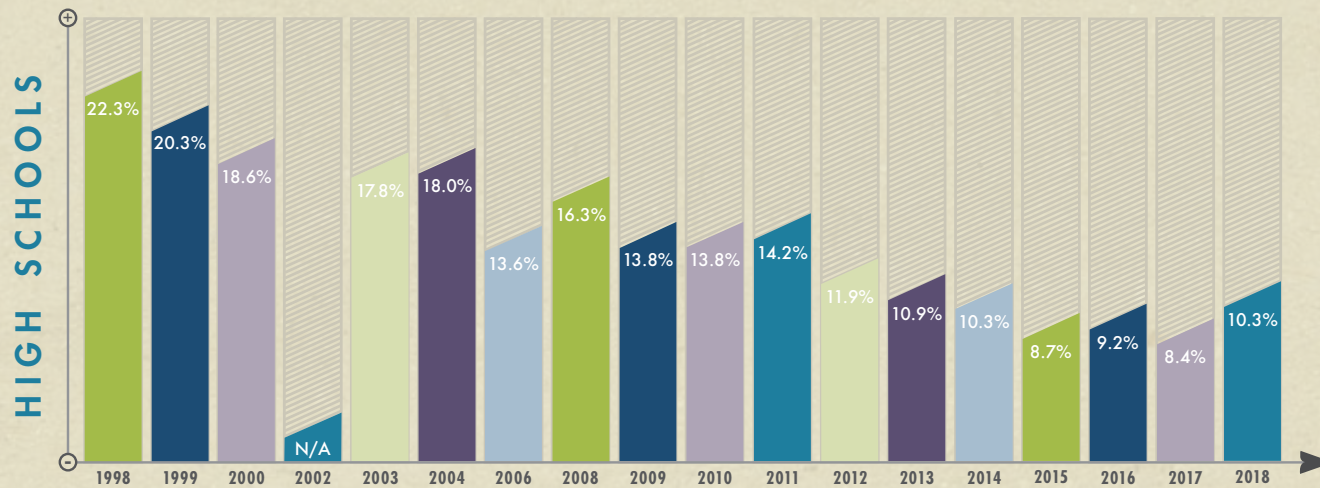
- * In 2018, **2,349 Mississippi public high school students** had used SLT on at least 20 of the past 30 days.
- * Since 1998, the prevalence of frequent SLT use *has not changed significantly*.
- * In the past year, the prevalence of frequent SLT use *has not changed significantly*.



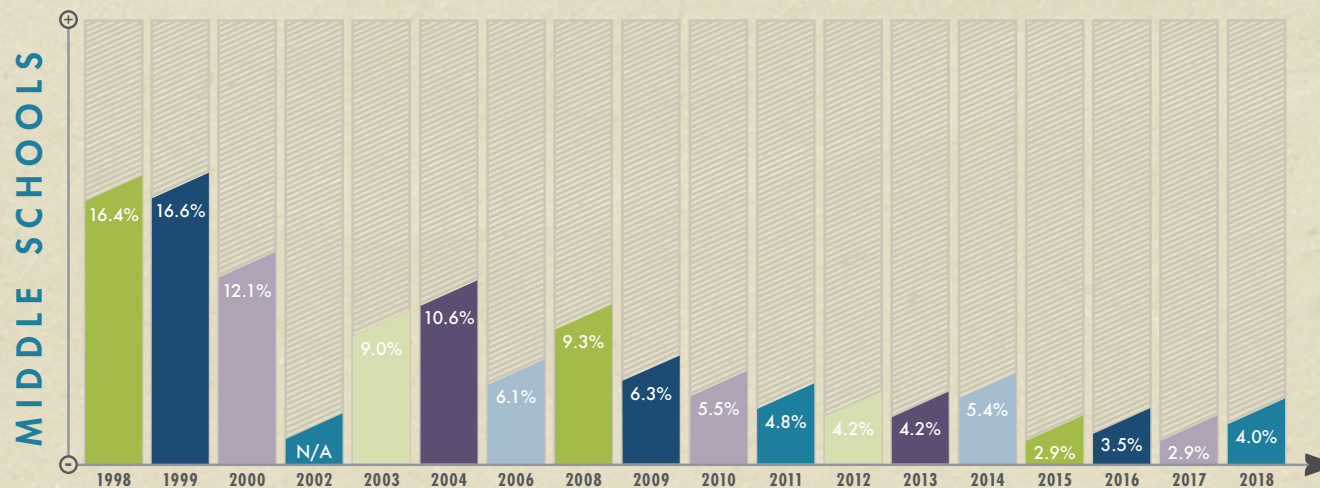
- * In 2018, **327 Mississippi public middle school students** had used SLT on at least 20 of the past 30 days.
- * The prevalence of frequent SLT use has **decreased by 86%** since 1998, leading to 2,074 fewer middle school students who are frequent SLT users.
- * In the past year, the prevalence of frequent SLT use *has not changed significantly*.

current cigar smoking

MISSISSIPPI PUBLIC SCHOOLS



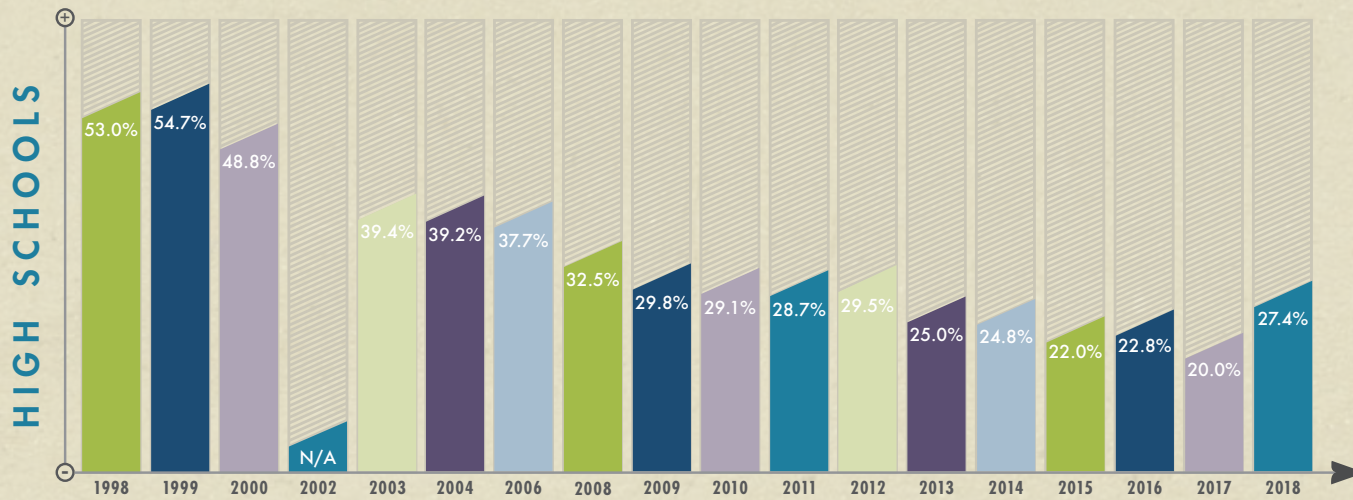
- * In 2018, **13,442 Mississippi public high school students** had smoked cigars on at least one of the past 30 days.
- * The prevalence of current cigar smoking has **decreased by 54%** since 1998, leading to 15,660 fewer young cigar smokers.
- * In the past year, the prevalence of current cigar smoking **has not changed significantly**.



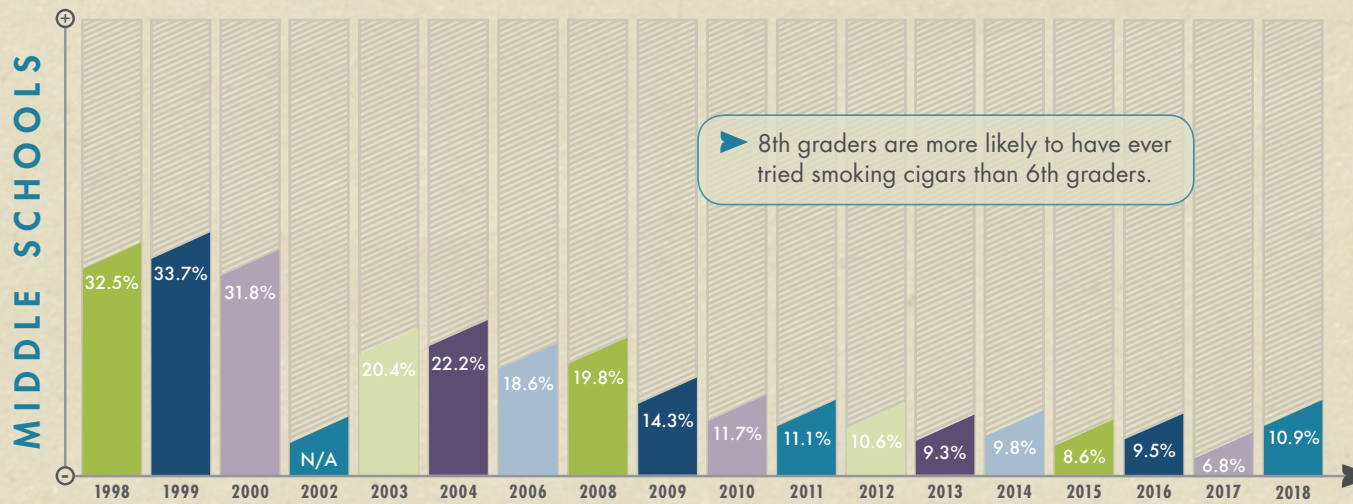
- * In 2018, **4,366 Mississippi public middle school students** had smoked cigars on at least one of the past 30 days.
- * The prevalence of current cigar smoking has **decreased by 76%** since 1998, leading to 13,536 fewer young cigar smokers.
- * In the past year, the prevalence of current cigar smoking **has not changed significantly**.

ever tried a cigar

MISSISSIPPI PUBLIC SCHOOLS



- * In 2018, *35,758 Mississippi public high school students* had tried at least one cigar.
- * The prevalence of having ever tried a cigar has *decreased by 48%* since 1998, leading to 33,409 fewer high school students who have tried cigar smoking.
- * In the past year, the prevalence of having ever tried smoking cigars *has not changed significantly*.

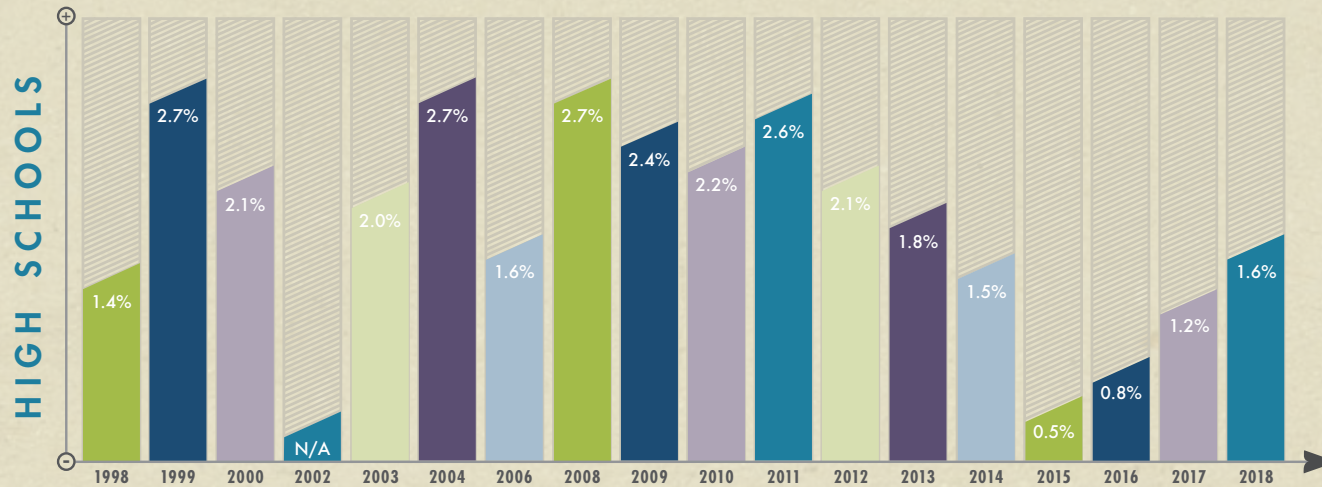


- * In 2018, *11,899 Mississippi public middle school students* had tried at least one cigar.
- * The prevalence of having ever tried a cigar has *decreased by 66%* since 1998, leading to 23,579 fewer middle school students who have tried cigar smoking.
- * In the past year, the prevalence of having ever tried smoking cigars *has not changed significantly*.

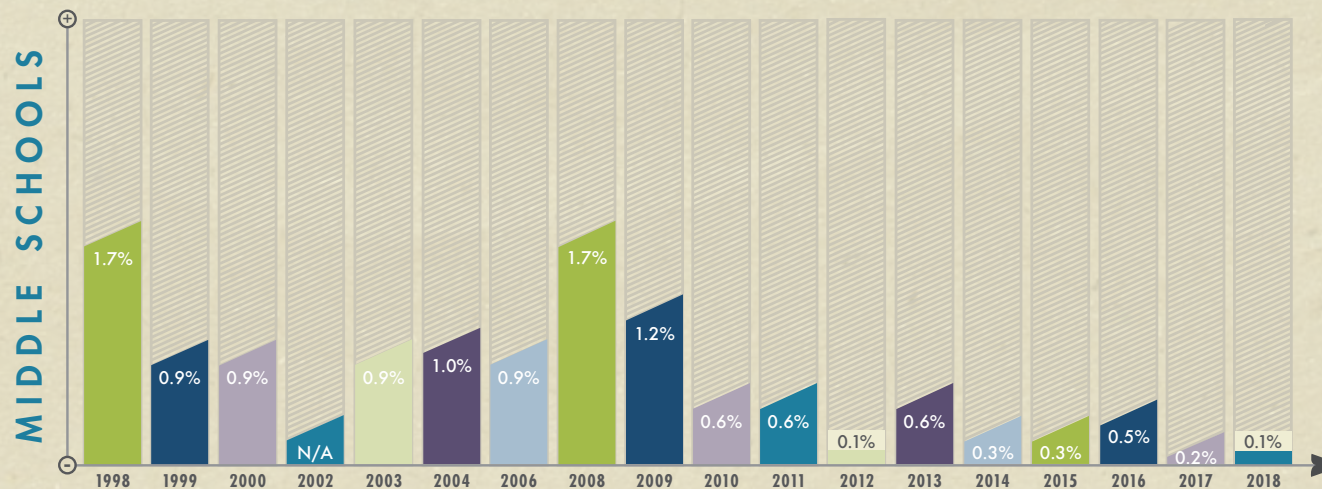
▶ Significant Demographic Differences

frequent cigar smoking

MISSISSIPPI PUBLIC SCHOOLS



- * In 2018, **2,088 Mississippi public high school students** had smoked cigars on at least 20 of the past 30 days.
- * Since 1998, the prevalence of frequent cigar smoking *has not changed significantly*.
- * In the past year, the prevalence of frequent cigar smoking *has not changed significantly*.



- * In 2018, **109 Mississippi public middle school students** had smoked cigars on at least 20 of the past 30 days.
- * Frequent cigar smoking has *decreased by 94%* since 1998, leading to 1,747 fewer middle school students who are frequent cigar smokers.
- * In the past year, the prevalence of frequent cigar smoking *has not changed significantly*.

Change in *Electronic Cigarette Use*

**Due to the newness of the product, e-cigarette rates were extremely low in 2010 when the YTS first asked about e-cigarette use. The percent change in e-cigarette use reflects this and highlights the surge in use among high and middle school students.

Current Electronic Cigarette Use
(Public High School)

	2010	2018	% Change
Overall	1.2%	21.6%	↑ 1700.0*
Female	1.1%	19.6%	↑ 1681.8*
Male	1.3%	23.6%	↑ 1715.4*
White	1.8%	34.0%	↑ 1788.9*
Black	0.6%	9.4%	↑ 1466.7*
9th	1.2%	18.1%	↑ 1408.3*
10th	0.9%	22.8%	↑ 2433.3*
11th	0.3%	24.8%	↑ 8166.7*
12th	2.5%	21.1%	↑ 744.0*

Ever Tried an Electronic Cigarette
(Public High School)

	2010	2018	% Change
Overall	1.9%	38.0%	↑ 1900.0*
Female	1.8%	34.6%	↑ 1822.2*
Male	1.9%	41.4%	↑ 2079.0*
White	3.1%	55.4%	↑ 1687.1*
Black	0.7%	20.2%	↑ 2785.7*
9th	1.6%	34.1%	↑ 2031.3*
10th	1.2%	41.4%	↑ 3350.0*
11th	1.2%	39.5%	↑ 3191.7*
12th	3.8%	37.4%	↑ 884.2*

Frequent Electronic Cigarette Use
(Public High School)

	2014	2018	% Change
Overall	1.6%	6.6%	↑ 312.5*
Female	0.9%	5.1%	↑ 466.7*
Male	2.2%	8.2%	↑ 272.7*
White	1.8%	12.5%	↑ 594.4*
Black	0.9%	1.4%	N/A
9th	0.7%	4.1%	↑ 485.7*
10th	1.5%	6.5%	↑ 333.3*
11th	2.2%	7.9%	↑ 259.1*
12th	2.1%	8.1%	N/A

Current Electronic Cigarette Use
(Public Middle School)

	2010	2018	% Change
Overall	0.6%	7.1%	↑ 1083.3*
Female	0.5%	7.4%	↑ 1380.0*
Male	0.8%	6.9%	↑ 762.5*
White	1.1%	9.5%	↑ 763.6*
Black	0.3%	4.7%	↑ 1466.7*
6th	0.7%	4.1%	↑ 485.7*
7th	0.3%	6.9%	↑ 2200.0*
8th	1.0%	10.3%	↑ 930.0*

Ever Tried an Electronic Cigarette
(Public Middle School)

	2010	2018	% Change
Overall	0.9%	16.6%	↑ 1744.4*
Female	0.7%	16.8%	↑ 2300.0*
Male	1.0%	16.5%	↑ 1550.0*
White	1.4%	21.0%	↑ 1400.0*
Black	0.4%	12.1%	↑ 2925.0*
6th	0.8%	12.0%	↑ 1400.0*
7th	0.5%	15.5%	↑ 3000.0*
8th	1.3%	22.4%	↑ 1623.1*

Frequent Electronic Cigarette Use
(Public Middle School)

	2014	2018	% Change
Overall	1.1%	1.0%	N/A
Female	0.4%	0.7%	N/A
Male	1.6%	1.1%	N/A
White	1.1%	1.4%	N/A
Black	1.0%	0.3%	N/A
6th	0.4%	0.4%	N/A
7th	0.8%	0.8%	N/A
8th	2.2%	1.8%	N/A

KEY

{ (↓) decrease (*) significant (↑) increase }

Change in Cigarette Smoking

Current Cigarette Smoking
(Public High School)

	1998	2018	% Change
Overall	30.3%	6.9%	↓ 77.2%*
Female	27.1%	6.0%	↓ 77.9%*
Male	33.9%	7.9%	↓ 76.7%*
White	43.8%	11.2%	↓ 74.4%*
Black	14.2%	2.4%	↓ 83.1%*
9th	27.6%	3.9%	↓ 85.9%*
10th	31.4%	6.5%	↓ 79.3%*
11th	33.5%	8.3%	↓ 75.2%*
12th	29.4%	9.4%	↓ 68.0%*

Ever Tried a Cigarette
(Public High School)

	1998	2018	% Change
Overall	75.6%	26.5%	↓ 65.0%*
Female	72.6%	23.9%	↓ 67.1%*
Male	78.7%	29.4%	↓ 62.6%*
White	79.4%	36.2%	↓ 54.4%*
Black	70.6%	16.4%	↓ 76.8%*
9th	73.1%	24.7%	↓ 66.2%*
10th	75.0%	24.3%	↓ 67.6%*
11th	76.9%	28.8%	↓ 62.6%*
12th	78.2%	28.5%	↓ 63.6%*

Frequent Cigarette Smoking
(Public High School)

	1998	2018	% Change
Overall	14.3%	1.9%	↓ 86.7%*
Female	11.6%	1.3%	↓ 88.8%*
Male	17.3%	2.4%	↓ 86.1%*
White	23.2%	3.0%	↓ 87.1%*
Black	3.4%	0.6%	N/A
9th	8.3%	1.4%	↓ 83.1%*
10th	16.7%	1.1%	↓ 93.4%*
11th	17.9%	2.4%	↓ 86.6%*
12th	16.1%	2.7%	↓ 83.2%*

Current Cigarette Smoking
(Public Middle School)

	1998	2018	% Change
Overall	20.6%	2.5%	↓ 87.9%*
Female	18.2%	2.1%	↓ 88.5%*
Male	23.0%	2.7%	↓ 88.3%*
White	22.8%	2.4%	↓ 89.5%*
Black	17.6%	1.9%	↓ 89.2%*
6th	11.9%	1.9%	↓ 84.0%*
7th	21.8%	2.7%	↓ 87.6%*
8th	25.8%	3.0%	↓ 88.4%*

Ever Tried a Cigarette
(Public Middle School)

	1998	2018	% Change
Overall	54.3%	12.9%	↓ 76.2%*
Female	51.2%	11.6%	↓ 77.3%*
Male	57.3%	14.2%	↓ 75.2%*
White	52.0%	13.7%	↓ 73.7%*
Black	56.3%	11.9%	↓ 78.9%*
6th	41.8%	9.9%	↓ 76.3%*
7th	55.0%	13.1%	↓ 76.2%*
8th	64.0%	15.8%	↓ 75.3%*

Frequent Cigarette Smoking
(Public Middle School)

	1998	2018	% Change
Overall	5.2%	0.2%	↓ 96.2%*
Female	3.6%	0.2%	N/A*
Male	6.8%	0.2%	↓ 97.1%*
White	6.4%	0.4%	↓ 93.8%*
Black	2.6%	0.1%	N/A*
6th	1.2%	0.1%	N/A*
7th	5.1%	0.4%	↓ 92.2%*
8th	7.1%	0.2%	↓ 97.2%*

KEY

{ (↓) decrease (*): significant
(↑) increase }

Change in Smokeless Tobacco Use

Current Smokeless Tobacco Use
(Public High School)

	1998	2018	% Change
Overall	9.4%	5.4%	↓ 42.6%
Female	1.3%	1.3%	N/A
Male	18.1%	9.6%	↓ 47.0%*
White	16.0%	8.6%	↓ 46.3%*
Black	1.5%	2.0%	N/A
9th	9.1%	3.8%	↓ 58.2%
10th	11.7%	5.3%	↓ 54.7%
11th	6.8%	6.2%	↓ 8.8%
12th	8.6%	6.2%	↓ 27.9%

Ever Tried Smokeless Tobacco
(Public High School)

	1998	2018	% Change
Overall	26.2%	12.9%	↓ 50.8%*
Female	11.4%	5.3%	↓ 53.5%*
Male	42.2%	20.8%	↓ 50.7%*
White	38.5%	21.8%	↓ 43.4%*
Black	11.6%	4.6%	↓ 60.3%*
9th	25.7%	9.1%	↓ 64.6%*
10th	27.0%	12.5%	↓ 53.7%*
11th	25.4%	17.8%	↓ 29.9%
12th	25.8%	12.7%	↓ 50.8%*

Frequent Smokeless Tobacco Use
(Public High School)

	1998	2018	% Change
Overall	3.7%	1.8%	N/A
Female	0.4%	0.5%	N/A
Male	7.3%	3.1%	↓ 57.5%
White	6.4%	3.0%	↓ 53.1%
Black	0.2%	0.6%	N/A
9th	2.2%	1.5%	N/A
10th	5.5%	1.2%	↓ 78.2%
11th	3.7%	1.9%	N/A
12th	3.5%	2.6%	N/A

Current Smokeless Tobacco Use
(Public Middle School)

	1998	2018	% Change
Overall	9.6%	1.8%	↓ 81.3%*
Female	4.2%	0.6%	N/A*
Male	14.8%	3.1%	↓ 79.1%*
White	12.7%	2.7%	↓ 78.7%*
Black	4.8%	0.8%	N/A*
6th	6.5%	1.7%	↓ 73.9%*
7th	8.7%	1.5%	↓ 82.8%*
8th	12.0%	2.3%	↓ 80.8%*

Ever Tried Smokeless Tobacco
(Public Middle School)

	1998	2018	% Change
Overall	18.1%	6.0%	↓ 66.9%*
Female	7.2%	3.8%	↓ 47.2%
Male	28.5%	8.2%	↓ 71.2%*
White	24.0%	9.7%	↓ 59.6%*
Black	10.5%	2.2%	↓ 79.1%*
6th	12.9%	5.1%	↓ 60.5%*
7th	19.0%	4.2%	↓ 77.9%*
8th	20.7%	8.7%	↓ 58.0%*

Frequent Smokeless Tobacco Use
(Public Middle School)

	1998	2018	% Change
Overall	2.2%	0.3%	N/A*
Female	0.9%	0.1%	N/A
Male	3.5%	0.5%	N/A*
White	2.4%	0.4%	N/A
Black	1.0%	0.1%	N/A
6th	0.5%	0.3%	N/A
7th	1.7%	0.2%	N/A
8th	3.0%	0.5%	N/A*

KEY

{ (↓) decrease (*): significant
(↑) increase }

Change in Cigar Smoking

Current Cigar Smoking
(Public High School)

	1998	2018	% Change
Overall	22.3%	10.3%	↓ 53.8%*
Female	13.8%	10.1%	↓ 26.8%
Male	31.1%	10.6%	↓ 65.9%*
White	23.5%	8.5%	↓ 63.8%*
Black	20.1%	11.6%	↓ 42.3%*
9th	18.9%	9.7%	↓ 48.7%*
10th	24.7%	10.4%	↓ 57.9%*
11th	23.8%	9.9%	↓ 58.4%*
12th	22.0%	11.3%	↓ 48.6%

Ever Tried a Cigar
(Public High School)

	1998	2018	% Change
Overall	53.0%	27.4%	↓ 48.3%*
Female	43.2%	24.2%	↓ 44.0%*
Male	63.5%	30.8%	↓ 51.5%*
White	54.4%	27.2%	↓ 50.0%*
Black	51.1%	27.5%	↓ 46.2%*
9th	50.0%	23.9%	↓ 52.2%*
10th	49.9%	26.5%	↓ 46.9%*
11th	57.5%	29.8%	↓ 48.2%*
12th	56.9%	30.2%	↓ 46.9%*

Frequent Cigar Smoking
(Public High School)

	1998	2018	% Change
Overall	1.4%	1.6%	N/A
Female	0.2%	1.2%	N/A
Male	2.6%	2.0%	N/A
White	1.5%	1.3%	N/A
Black	0.9%	1.8%	N/A
9th	1.1%	1.0%	N/A
10th	1.8%	1.6%	N/A
11th	1.0%	1.0%	N/A
12th	1.4%	2.6%	N/A

Current Cigar Smoking
(Public Middle School)

	1998	2018	% Change
Overall	16.4%	4.0%	↓ 75.6%*
Female	12.3%	4.2%	↓ 65.9%*
Male	20.4%	3.7%	↓ 81.9%*
White	12.3%	2.4%	↓ 80.5%*
Black	19.9%	5.0%	↓ 74.9%*
6th	7.9%	3.4%	↓ 57.0%*
7th	17.1%	3.0%	↓ 82.5%*
8th	21.2%	5.6%	↓ 73.6%*

Ever Tried a Cigar
(Public Middle School)

	1998	2018	% Change
Overall	32.5%	10.9%	↓ 66.5%*
Female	24.2%	10.8%	↓ 55.4%*
Male	40.7%	11.2%	↓ 72.5%*
White	29.2%	7.5%	↓ 74.3%*
Black	35.6%	13.9%	↓ 61.0%*
6th	19.2%	7.5%	↓ 60.9%*
7th	35.5%	9.0%	↓ 74.7%*
8th	40.2%	16.4%	↓ 59.2%*

Frequent Cigar Smoking
(Public Middle School)

	1998	2018	% Change
Overall	1.7%	0.1%	N/A*
Female	0.9%	0.0%	N/A
Male	2.4%	0.2%	N/A*
White	1.3%	0.1%	N/A
Black	1.7%	0.1%	N/A*
6th	0.2%	0.3%	N/A
7th	1.0%	0.0%	N/A
8th	1.9%	0.0%	N/A

KEY

{ (↓) decrease (* significant) (↑) increase }

APPENDIX { CIGARS }



Mississippi Youth Tobacco Use {2010-2018} Current Electronic Cigarette Smoking - Public High School

	2018	2017	2016	2015	2014	2013	2012	2011	2010
TOTAL	21.6 (±4.4)	11.5 (±2.9)	10.3 (±1.6)	12.0 (±2.1)	10.1 (±2.0)	2.9 (±1.0)	2.7 (±1.2)	2.3 (±1.1)	1.2 (±0.8)
SEX									
FEMALE	19.6 (±5.4)	10.0 (±2.8)	9.1 (±2.0)	8.8 (±2.1)	9.0 (±2.2)	2.4 (±1.1)	1.9 (±1.2)	1.1 (±0.8)	1.1 (±1.0)
MALE	23.6 (±4.4)	13.3 (±3.9)	11.4 (±2.9)	15.1 (±3.0)	11.3 (±2.9)	3.3 (±1.7)	3.4 (±1.9)	3.6 (±1.8)	1.3 (±0.9)
RACE									
WHITE	34.0 (±4.1)	16.7 (±3.9)	15.1 (±2.6)	16.9 (±3.1)	13.6 (±3.7)	5.2 (±2.4)	4.7 (±2.6)	3.4 (±2.2)	1.8 (±1.3)
BLACK	9.4 (±3.3)	6.4 (±2.0)	6.7 (±2.7)	5.7 (±1.8)	6.4 (±1.7)	0.8 (±0.8)	0.8 (±0.7)	1.6 (±1.1)	0.6 (±0.9)
GRADE									
9	18.1 (±4.3)	9.0 (±2.7)	8.7 (±2.6)	9.1 (±2.5)	8.1 (±3.0)	1.9 (±1.5)	2.6 (±1.6)	1.7 (±1.5)	1.2 (±1.0)
10	22.8 (±5.3)	11.7 (±4.2)	10.6 (±3.2)	13.6 (±4.9)	11.2 (±3.1)	2.3 (±1.8)	4.3 (±2.7)	1.9 (±2.0)	0.9 (±1.0)
11	24.8 (±9.3)	10.5 (±6.2)	10.4 (±2.9)	10.2 (±5.0)	10.4 (±3.8)	2.7 (±1.6)	2.4 (±1.9)	1.3 (±1.3)	0.3 (±1.0)
12	21.1 (±6.1)	15.2 (±5.5)	11.1 (±3.2)	15.3 (±5.2)	11.3 (±6.1)	5.0 (±2.3)	1.1 (±2.1)	4.4 (±3.4)	2.5 (±2.4)

Mississippi Youth Tobacco Use {2010-2018} Current Electronic Cigarette Smoking - Public Middle School

	2018	2017	2016	2015	2014	2013	2012	2011	2010
TOTAL	7.1 (±1.8)	4.8 (±1.2)	5.9 (±1.8)	4.6 (±1.5)	6.7 (±2.6)	1.5 (±0.7)	1.1 (0.6)	1.0 (±0.7)	0.6 (±0.4)
SEX									
FEMALE	7.4 (±2.1)	4.6 (±1.4)	4.6 (±1.9)	4.2 (±1.9)	4.4 (±2.1)	1.0 (±0.9)	1.3 (±1.0)	0.5 (±0.8)	0.5 (±0.6)
MALE	6.9 (±2.2)	5.1 (±1.9)	7.1 (±2.6)	5.0 (±1.7)	8.8 (±3.9)	1.9 (±0.9)	0.8 (±0.6)	1.6 (±1.2)	0.8 (±0.4)
RACE									
WHITE	9.5 (±2.8)	6.5 (±2.3)	7.6 (±2.7)	5.9 (±2.4)	6.1 (±3.5)	2.0 (±1.2)	1.4 (±1.1)	1.6 (±1.5)	1.1 (±0.7)
BLACK	4.7 (±1.3)	2.8 (±1.6)	4.1 (±2.5)	2.8 (±1.7)	7.8 (±3.9)	0.9 (±0.8)	0.2 (±0.4)	0.6 (±0.7)	0.3 (±0.5)
GRADE									
6	4.1 (±1.1)	2.2 (±1.8)	4.3 (±2.9)	1.2 (±1.3)	5.3 (±3.7)	1.2 (±0.8)	0.4 (±1.1)	0.4 (±0.7)	0.7 (±1.1)
7	6.9 (±2.7)	4.4 (±1.9)	5.1 (±3.0)	5.5 (±2.3)	7.1 (±4.8)	1.0 (±1.1)	0.5 (±0.7)	1.2 (±1.3)	0.3 (±1.3)
8	10.3 (±4.9)	8.0 (±2.5)	8.1 (±2.3)	7.1 (±3.3)	7.7 (±4.0)	2.3 (±1.6)	2.3 (±1.2)	1.4 (±1.3)	1.0 (±1.1)

Changes between 2013 and 2014 in the wording and placement of questions about the use of e-cigarettes might have had an impact on reported use of these products.

Mississippi Youth Tobacco Use {2010-2018} Ever Tried an Electronic Cigarette - Public High School

	2018	2017	2016	2015	2014	2013	2012	2011	2010
TOTAL	38.0 (±5.8)	26.7 (±3.7)	26.9 (±2.7)	26.9 (±3.6)	21.6 (±3.0)	9.7 (±2.6)	8.4 (±3.6)	5.9 (±2.0)	1.9 (±1.1)
SEX									
FEMALE	34.6 (±6.8)	26.4 (±4.4)	23.5 (±3.8)	22.6 (±3.2)	19.6 (±3.4)	8.5 (±2.7)	7.5 (±4.4)	2.8 (±1.7)	1.8 (±1.9)
MALE	41.4 (±6.1)	27.5 (±4.9)	30.0 (±3.1)	31.4 (±4.9)	23.0 (±4.1)	10.9 (±3.2)	9.2 (±3.8)	9.1 (±3.1)	1.9 (±1.1)
RACE									
WHITE	55.4 (±3.3)	36.8 (±4.4)	35.9 (±4.5)	39.4 (±3.1)	31.0 (±3.9)	17.8 (±4.5)	16.1 (±5.7)	11.8 (±3.2)	3.1 (±1.9)
BLACK	20.2 (±4.7)	15.8 (±4.0)	17.8 (±2.9)	14.3 (±3.6)	11.1 (±2.8)	2.2 (±1.4)	1.1 (±1.1)	1.3 (±1.2)	0.7 (±0.8)
GRADE									
9	34.1 (±5.4)	21.6 (±4.6)	21.1 (±5.1)	22.2 (±5.5)	15.9 (±5.1)	5.6 (±3.0)	6.1 (±3.9)	4.2 (±2.8)	1.6 (±0.9)
10	41.4 (±5.5)	26.9 (±4.8)	29.4 (±5.4)	30.0 (±5.9)	23.4 (±5.5)	9.9 (±4.3)	10.1 (±4.6)	6.2 (±3.2)	1.2 (±1.5)
11	39.5 (±10.3)	29.3 (±9.2)	30.0 (±4.3)	24.1 (±5.4)	22.3 (±5.6)	8.7 (±4.4)	7.0 (±3.6)	5.5 (±2.2)	1.2 (±1.5)
12	37.4 (±8.6)	30.0 (±5.8)	26.8 (±6.0)	31.7 (±7.9)	26.6 (±7.4)	15.7 (±5.9)	10.9 (±9.0)	8.5 (±4.6)	3.8 (±4.7)

Mississippi Youth Tobacco Use {2010-2018} Ever Tried an Electronic Cigarette - Public Middle School

	2018	2017	2016	2015	2014	2013	2012	2011	2010
TOTAL	16.6 (±2.9)	12.0 (±2.6)	13.8 (±2.9)	12.0 (±2.0)	10.7 (±3.0)	3.2 (±1.2)	3.5 (±1.4)	2.0 (±0.9)	0.9 (±0.6)
SEX									
FEMALE	16.8 (±3.3)	12.0 (±3.2)	10.5 (±2.6)	9.8 (±2.2)	6.7 (±2.5)	3.3 (±1.5)	3.6 (±1.8)	1.2 (±0.9)	0.7 (±0.8)
MALE	16.5 (±3.2)	11.9 (±3.2)	17.0 (±4.4)	14.0 (±2.9)	14.7 (±4.5)	3.2 (±1.5)	3.5 (±1.8)	2.8 (±1.7)	1.0 (±0.8)
RACE									
WHITE	21.0 (±4.7)	16.4 (±3.8)	17.8 (±5.0)	15.3 (±3.0)	11.8 (±3.9)	5.2 (±1.9)	5.1 (±2.3)	2.8 (±1.6)	1.4 (±1.2)
BLACK	12.1 (±2.0)	8.1 (±3.3)	9.5 (±3.1)	8.1 (±2.1)	9.9 (±4.8)	1.2 (±0.9)	1.5 (±0.6)	1.2 (±1.1)	0.4 (±0.5)
GRADE									
6	12.0 (±2.9)	7.3 (±2.6)	8.6 (±3.5)	7.4 (±2.2)	8.4 (±4.2)	1.8 (±1.1)	2.1 (±1.4)	1.4 (±1.3)	0.8 (±1.0)
7	15.5 (±5.0)	12.0 (±4.2)	13.8 (±3.1)	11.8 (±2.4)	11.2 (±6.4)	3.4 (±2.1)	3.2 (±2.2)	2.3 (±1.5)	0.5 (±1.1)
8	22.4 (±5.9)	16.5 (±4.5)	18.8 (±5.1)	16.5 (±4.4)	12.5 (±5.1)	4.6 (±1.5)	5.4 (±2.5)	2.0 (±1.5)	1.3 (±1.2)

Changes between 2013 and 2014 in the wording and placement of questions about the use of e-cigarettes might have had an impact on reported use of these products.

Mississippi Youth Tobacco Use {2014-2018} Frequent Electronic Cigarette Smoking - Public High School

	2018	2017	2016	2015	2014
TOTAL	6.6 (±2.0)	3.5 (±1.6)	1.9 (±0.8)	2.1 (±1.1)	1.6 (±0.9)
SEX					
FEMALE	5.1 (±2.3)	2.6 (±1.4)	1.0 (±1.1)	1.6 (±1.0)	0.9 (0.9)
MALE	8.2 (±2.7)	4.5 (±2.2)	2.8 (±1.3)	2.5 (±1.5)	2.2 (±1.3)
RACE					
WHITE	12.5 (±2.5)	5.2 (±2.5)	3.1 (±1.7)	2.7 (±1.7)	1.8 (±1.3)
BLACK	1.4 (±0.8)	1.6 (±1.0)	0.9 (±1.0)	1.1 (±0.8)	0.9 (±0.9)
GRADE					
9	4.1 (±2.0)	2.1 (±1.3)	1.5 (±1.2)	1.9 (±1.6)	0.7 (±1.0)
10	6.5 (±2.9)	2.8 (±1.9)	1.3 (±1.5)	3.0 (±2.6)	1.5 (±1.2)
11	7.9 (±3.9)	4.2 (±3.1)	3.0 (±2.4)	1.4 (±1.5)	2.2 (±1.5)
12	8.1 (±4.1)	5.0 (±3.4)	2.3 (±1.5)	1.6 (±1.5)	2.1 (±2.3)

Mississippi Youth Tobacco Use {2014-2018} Frequent Electronic Cigarette Smoking - Public Middle School

	2018	2017	2016	2015	2014
TOTAL	1.0 (±0.4)	1.2 (±0.6)	0.9 (±0.4)	0.6 (±0.5)	1.1 (±0.7)
SEX					
FEMALE	0.7 (±0.6)	1.4 (±0.9)	0.4 (0.2)	0.3 (±0.4)	0.4 (±0.8)
MALE	1.1 (±0.5)	1.0 (±0.7)	1.4 (0.7)	0.8 (±0.7)	1.6 (±1.3)
RACE					
WHITE	1.4 (±0.8)	1.9 (±0.8)	0.8 (±0.9)	1.0 (±0.9)	1.1 (±1.6)
BLACK	0.3 (±0.4)	0.3 (±0.5)	0.6 (±0.6)	0.1 (±0.5)	1.0 (±0.9)
GRADE					
6	0.4 (±0.5)	0.0 (±0.0)	0.3 (±0.6)	0.1 (±0.2)	0.4 (±0.8)
7	0.8 (±0.7)	0.6 (±0.6)	0.9 (±0.9)	0.9 (±0.9)	0.8 (±1.3)
8	1.8 (±1.3)	3.0 (±1.6)	1.5 (±1.3)	0.7 (±0.9)	2.2 (±2.6)

Mississippi Youth Tobacco Use [1998-2018] Current Cigarette Smoking - Public High School

	2018	2017	2016	2015	2014	2013	2012	2011	2010
TOTAL	6.9 (±1.9)	7.2 (±1.9)	9.4 (±1.8)	9.9 (±1.9)	12.2 (±2.5)	13.3 (±3.0)	18.1 (±4.0)	19.0 (±3.8)	19.7 (±2.5)
SEX									
FEMALE	6.0 (±2.0)	6.2 (±2.1)	9.0 (±2.8)	5.9 (±1.7)	9.6 (±2.4)	11.4 (±3.7)	15.8 (±4.6)	13.9 (±3.3)	17.8 (±3.6)
MALE	7.9 (±2.7)	8.2 (±2.0)	9.9 (±1.9)	14.1 (±3.0)	14.9 (±3.3)	15.2 (±3.2)	20.3 (±4.9)	24.3 (±5.3)	21.5 (±3.0)
RACE									
WHITE	11.2 (±3.0)	12.4 (±2.0)	14.9 (±3.7)	16.0 (±2.2)	17.5 (±4.3)	20.2 (±3.9)	25.6 (±6.0)	27.9 (±4.5)	29.0 (±3.3)
BLACK	2.4 (±1.1)	2.0 (±1.0)	4.4 (±1.5)	3.4 (±1.8)	7.1 (±1.7)	7.1 (±2.9)	11.2 (±3.1)	11.1 (±3.6)	11.1 (±2.1)
GRADE									
9	3.9 (±2.1)	3.3 (±1.5)	5.2 (±2.3)	6.8 (±2.4)	8.9 (±2.7)	6.9 (±3.9)	10.8 (±3.6)	12.8 (±5.8)	14.7 (±4.2)
10	6.5 (±2.7)	6.3 (±2.7)	7.4 (±2.8)	11.4 (±3.5)	9.7 (±3.1)	12.5 (±5.1)	20.8 (±6.4)	19.2 (±5.7)	20.0 (±4.7)
11	8.3 (±4.3)	8.0 (±4.2)	12.2 (±4.2)	7.6 (±3.3)	12.8 (±5.5)	14.7 (±4.8)	19.6 (±5.9)	19.4 (±5.2)	22.0 (±4.1)
12	9.4 (±2.7)	11.7 (±3.3)	14.0 (±4.7)	14.4 (±5.4)	19.7 (±7.0)	21.3 (±5.3)	22.6 (±9.3)	27.0 (±5.1)	23.9 (±6.3)

	2009	2008	2006	2004	2003	2002	2000	1999	1998
TOTAL	18.8 (±2.2)	20.2 (±4.4)	18.7 (±5.1)	22.1 (±2.6)	23.4 (±1.5)	23.1 (±2.6)	29.2 (±3.6)	32.5 (±3.3)	30.3 (±3.0)
SEX									
FEMALE	15.6 (±3.0)	15.7 (±3.8)	16.9 (±5.5)	19.7 (±2.9)	20.6 (±2.0)	21.1 (±3.6)	26.2 (±5.9)	30.7 (±5.2)	27.1 (±4.6)
MALE	22.2 (±3.1)	24.8 (±5.8)	20.1 (±5.5)	24.3 (±3.1)	26.0 (±1.9)	25.1 (±3.1)	32.3 (±4.6)	34.4 (±4.2)	33.9 (±4.0)
RACE									
WHITE	27.6 (±3.7)	28.9 (±5.4)	25.9 (±4.7)	29.9 (±3.8)	31.0 (±2.3)	29.3 (±2.7)	41.7 (±5.9)	42.7 (±4.8)	43.8 (±4.2)
BLACK	9.8 (±2.5)	10.1 (±6.0)	11.6 (±3.5)	14.1 (±2.8)	14.1 (±1.4)	16.7 (±4.0)	13.3 (±3.0)	16.6 (±3.2)	14.2 (±2.7)
GRADE									
9	14.4 (±3.5)	17.7 (±7.4)	17.0 (±4.3)	19.8 (±4.3)	22.4 (±2.6)	20.0 (±4.4)	25.3 (±5.3)	28.2 (±4.1)	27.6 (±5.0)
10	20.0 (±3.3)	19.0 (±6.1)	12.9 (±7.4)	22.9 (±4.3)	21.8 (±2.4)	19.7 (±2.7)	27.6 (±5.5)	30.3 (±5.6)	31.4 (±6.6)
11	19.8 (±3.1)	15.5 (±7.5)	20.1 (±5.9)	22.7 (±4.6)	24.2 (±2.8)	27.1 (±5.9)	32.9 (±8.5)	38.3 (±8.3)	33.5 (±6.5)
12	22.8 (±6.3)	29.9 (±8.2)	27.5 (±6.1)	24.6 (±6.4)	25.5 (±2.4)	26.6 (±5.8)	32.6 (±8.9)	35.1 (±6.7)	29.4 (±6.8)



Mississippi Youth Tobacco Use {1998-2018} Current Cigarette Smoking - Public Middle School

	2018	2017	2016	2015	2014	2013	2012	2011	2010
TOTAL	2.5 (±0.9)	1.5 (±0.7)	3.8 (±1.0)	3.0 (±0.9)	4.7 (±1.5)	4.1 (±1.3)	5.8 (±1.8)	5.8 (±1.8)	5.7 (±1.5)
SEX									
FEMALE	2.1 (±1.4)	1.1 (±0.6)	2.5 (±1.0)	2.5 (±1.2)	3.2 (±1.4)	3.4 (±1.6)	5.0 (±2.0)	4.7 (±2.5)	4.4 (±1.8)
MALE	2.7 (±0.9)	1.8 (±1.0)	4.9 (±2.0)	3.5 (±1.1)	6.2 (±2.3)	4.6 (±1.5)	6.6 (±2.4)	6.7 (±2.2)	6.8 (±1.9)
RACE									
WHITE	2.4 (±1.1)	2.2 (±1.3)	4.1 (±1.2)	4.1 (±1.4)	4.9 (±2.7)	4.9 (±1.8)	7.7 (±2.7)	6.0 (±2.1)	6.2 (±2.0)
BLACK	1.9 (±1.0)	0.7 (±0.4)	3.3 (±1.7)	1.9 (±1.2)	4.4 (±2.0)	3.1 (±1.4)	3.8 (±2.0)	5.1 (±2.5)	5.2 (±2.4)
GRADE									
6	1.9 (±1.2)	1.0 (±0.8)	2.6 (±2.0)	1.0 (±0.8)	2.2 (±2.0)	2.9 (±1.2)	2.8 (±1.9)	2.4 (±1.2)	2.8 (±1.8)
7	2.7 (±1.4)	1.3 (±1.3)	4.1 (±1.9)	3.4 (±1.6)	3.9 (±2.0)	3.5 (±1.6)	4.4 (±2.5)	5.6 (±2.1)	6.5 (±1.7)
8	3.0 (±2.2)	2.1 (±1.7)	4.5 (±1.8)	4.5 (±1.7)	8.0 (±3.6)	6.0 (±2.2)	10.6 (±3.2)	8.0 (±3.9)	7.8 (±3.2)

	2009	2008	2006	2004	2003	2002	2000	1999	1998
TOTAL	7.2 (±1.7)	8.9 (±2.0)	8.4 (±1.6)	12.0 (±2.0)	11.0 (±1.2)	11.9 (±1.6)	18.1 (±2.3)	23.0 (±3.2)	20.6 (±3.1)
SEX									
FEMALE	6.2 (±1.8)	6.9 (±2.8)	7.8 (±2.4)	11.0 (±2.5)	9.8 (±1.3)	11.5 (±2.0)	16.9 (±2.6)	19.4 (±2.6)	18.2 (±4.8)
MALE	8.0 (±2.5)	11.0 (±2.3)	9.0 (±2.6)	12.8 (±2.8)	12.0 (±1.4)	12.1 (±1.8)	19.2 (±3.5)	26.1 (±4.8)	23.0 (±3.4)
RACE									
WHITE	8.8 (±3.1)	11.2 (±3.0)	9.9 (±2.6)	13.5 (±3.4)	10.7 (±1.5)	13.3 (±2.0)	20.9 (±3.6)	23.4 (±3.7)	22.8 (±4.4)
BLACK	5.6 (±2.0)	6.9 (±1.9)	7.0 (±2.3)	10.2 (±2.1)	10.8 (±1.4)	8.8 (±2.9)	15.0 (±3.5)	21.8 (±5.0)	17.6 (±4.0)
GRADE									
6	3.6 (±2.0)	4.4 (±2.8)	4.0 (±2.1)	6.8 (±1.9)	7.1 (±1.3)	8.8 (±2.1)	13.6 (±4.2)	17.7 (±4.5)	11.9 (±4.7)
7	6.7 (±2.7)	10.1 (±3.1)	7.2 (±2.2)	13.6 (±3.5)	10.8 (±1.8)	14.9 (±2.7)	22.0 (±2.7)	21.8 (±4.1)	21.8 (±7.7)
8	11.1 (±3.6)	12.5 (±3.8)	13.5 (±2.6)	15.1 (±4.5)	14.9 (±1.8)	14.7 (±3.7)	18.5 (±4.1)	29.0 (±5.2)	25.8 (±5.3)

Mississippi Youth Tobacco Use {1998-2018} Ever Tried a Cigarette - Public High School

	2018	2017	2016	2015	2014	2013	2012	2011	2010
TOTAL	26.5 (±4.5)	32.9 (±4.0)	32.1 (±2.6)	35.8 (±5.0)	37.4 (±3.7)	39.8 (±5.3)	46.7 (±3.2)	46.8 (±5.1)	51.2 (±3.2)
SEX									
FEMALE	23.9 (±4.7)	33.6 (±4.3)	30.4 (±4.4)	28.0 (±5.4)	33.4 (±3.7)	36.6 (±5.6)	42.7 (±4.2)	41.8 (±5.4)	48.7 (±4.0)
MALE	29.4 (±5.6)	32.7 (±5.2)	33.6 (±2.9)	43.2 (±6.1)	41.0 (±4.9)	43.0 (±6.1)	50.7 (±4.7)	52.4 (±6.4)	53.5 (±4.7)
RACE									
WHITE	36.2 (±4.5)	41.8 (±3.3)	41.1 (±4.5)	44.2 (±5.8)	43.0 (±4.5)	45.3 (±6.2)	51.8 (±5.7)	55.5 (±5.7)	59.0 (±5.0)
BLACK	16.4 (±3.6)	24.0 (±4.5)	23.3 (±2.9)	26.7 (±5.6)	31.3 (±4.0)	34.7 (±5.9)	41.6 (±4.6)	38.8 (±5.7)	44.0 (±4.0)
GRADE									
9	24.7 (±5.9)	23.8 (±3.3)	26.8 (±5.8)	26.1 (±6.5)	30.3 (±5.9)	27.2 (±7.9)	35.2 (±5.8)	41.9 (±8.7)	42.9 (±5.4)
10	24.3 (±5.2)	31.9 (±7.1)	29.3 (±5.5)	37.3 (±5.8)	37.1 (±6.7)	42.3 (±6.4)	50.5 (±7.5)	48.5 (±10.0)	49.9 (±5.3)
11	28.8 (±8.7)	34.4 (±7.1)	37.1 (±6.9)	38.6 (±7.4)	39.8 (±5.9)	44.0 (±9.9)	49.1 (±5.6)	43.4 (±8.4)	56.6 (±6.8)
12	28.5 (±7.7)	43.4 (±5.0)	37.0 (±6.1)	44.0 (±12.2)	44.4 (±8.6)	48.3 (±8.4)	54.4 (±10.9)	55.2 (±6.1)	58.7 (±5.9)

	2009	2008	2006	2004	2003	2002	2000	1999	1998
TOTAL	48.0 (±3.1)	54.0 (±4.5)	61.2 (±3.9)	59.4 (±2.5)	60.7 (±1.7)	61.5 (±2.5)	71.5 (±2.2)	77.2 (±2.4)	75.6 (±3.0)
SEX									
FEMALE	43.5 (±4.1)	48.2 (±4.2)	61.0 (±6.9)	54.8 (±3.5)	57.4 (±2.6)	59.3 (±2.9)	70.0 (±4.0)	73.6 (±3.9)	72.6 (±3.7)
MALE	53.1 (±3.6)	59.7 (±6.3)	61.2 (±4.2)	63.9 (±3.3)	64.2 (±1.8)	64.0 (±3.7)	73.1 (±2.9)	80.9 (±3.1)	78.7 (±3.3)
RACE									
WHITE	53.2 (±5.0)	56.2 (±6.3)	67.1 (±8.6)	64.3 (±3.6)	63.1 (±2.1)	61.4 (±3.5)	75.5 (±4.9)	81.0 (±3.2)	79.4 (±3.3)
BLACK	42.6 (±4.1)	50.9 (±7.4)	56.0 (±3.4)	54.2 (±4.2)	57.5 (±2.7)	61.1 (±3.8)	65.9 (±3.8)	72.3 (±4.4)	70.6 (±4.5)
GRADE									
9	42.3 (±4.8)	51.0 (±9.3)	59.8 (±6.9)	56.3 (±4.8)	57.9 (±3.1)	54.5 (±4.9)	69.3 (±3.5)	75.2 (±3.1)	73.1 (±4.3)
10	50.4 (±4.3)	52.1 (±6.8)	57.2 (±5.6)	58.7 (±5.4)	59.6 (±2.6)	62.4 (±3.7)	69.3 (±4.5)	77.7 (±6.8)	75.0 (±7.7)
11	48.0 (±7.1)	48.9 (±8.3)	65.8 (±10.5)	58.4 (±6.8)	62.3 (±2.9)	65.0 (±5.2)	72.7 (±8.3)	75.8 (±6.9)	76.9 (±5.3)
12	53.3 (±6.5)	66.7 (±7.1)	63.9 (±7.2)	67.1 (±4.9)	64.5 (±2.6)	66.5 (±4.1)	75.9 (±6.8)	80.8 (±4.6)	78.2 (±5.6)



Mississippi Youth Tobacco Use {1998-2018} Ever Tried a Cigarette - Public Middle School

	2018	2017	2016	2015	2014	2013	2012	2011	2010
TOTAL	12.9 (±2.3)	12.7 (±2.7)	17.0 (±3.2)	15.0 (±2.5)	19.3 (±4.7)	16.8 (±3.3)	20.8 (±4.5)	23.3 (±4.7)	23.9 (±3.3)
SEX									
FEMALE	11.6 (±2.3)	11.3 (±3.0)	13.3 (±2.6)	13.6 (±3.5)	15.0 (±4.0)	14.5 (±3.3)	17.9 (±4.0)	21.6 (±4.8)	21.7 (±4.3)
MALE	14.2 (±2.8)	14.0 (±3.4)	20.9 (±5.0)	16.4 (±2.9)	23.7 (±6.8)	19.0 (±3.8)	23.7 (±5.8)	24.8 (±5.3)	26.1 (±3.5)
RACE									
WHITE	13.7 (±3.6)	11.8 (±4.0)	17.2 (±4.1)	16.2 (±3.0)	17.3 (±5.0)	18.0 (±4.3)	25.2 (±5.5)	22.2 (±6.5)	25.4 (±4.6)
BLACK	11.9 (±2.4)	13.0 (±3.7)	16.5 (±4.2)	13.8 (±4.8)	21.8 (±7.7)	15.1 (±3.7)	16.5 (±5.0)	24.3 (±5.2)	22.3 (±4.5)
GRADE									
6	9.9 (±2.8)	7.1 (±3.2)	15.2 (±4.9)	8.0 (±3.0)	13.5 (±6.2)	11.6 (±3.9)	12.0 (±5.1)	13.1 (±6.3)	14.9 (±5.2)
7	13.1 (±5.5)	11.8 (±3.9)	14.7 (±3.7)	14.2 (±2.6)	20.5 (±9.7)	14.8 (±3.2)	20.8 (±5.2)	23.0 (±4.4)	23.8 (±5.1)
8	15.8 (±4.3)	19.5 (±4.1)	21.0 (±4.5)	22.1 (±4.7)	24.1 (±6.1)	24.1 (±5.2)	30.2 (±7.4)	32.0 (±9.2)	33.1 (±6.4)

	2009	2008	2006	2004	2003	2002	2000	1999	1998
TOTAL	25.9 (±3.5)	34.8 (±4.8)	33.3 (±5.1)	38.9 (±3.9)	36.3 (±2.5)	40.9 (±3.5)	53.4 (±3.3)	57.2 (±4.2)	54.3 (±4.1)
SEX									
FEMALE	23.8 (±4.5)	29.9 (±5.6)	32.3 (±6.2)	36.4 (±3.9)	33.6 (±2.7)	38.5 (±4.6)	48.6 (±3.4)	53.7 (±5.1)	51.2 (±5.3)
MALE	27.9 (±3.8)	39.4 (±4.8)	34.4 (±6.1)	41.5 (±5.0)	39.0 (±2.9)	43.5 (±3.2)	58.1 (±4.8)	60.3 (±4.9)	57.3 (±4.3)
RACE									
WHITE	24.4 (±5.3)	31.9 (±6.0)	30.4 (±6.5)	36.2 (±5.8)	33.3 (±3.0)	39.4 (±3.6)	50.1 (±4.6)	55.7 (±3.2)	52.0 (±6.6)
BLACK	26.7 (±4.4)	37.0 (±5.0)	36.2 (±6.2)	41.5 (±2.9)	39.3 (±2.7)	41.8 (±5.8)	56.7 (±7.9)	58.3 (±7.6)	56.3 (±7.1)
GRADE									
6	18.2 (±4.0)	22.5 (±6.7)	19.3 (±4.7)	29.1 (±5.5)	25.5 (±3.1)	32.8 (±4.9)	40.5 (±7.3)	45.1 (±5.2)	41.8 (±4.9)
7	24.9 (±6.1)	36.6 (±5.6)	36.3 (±6.9)	41.5 (±5.3)	37.0 (±3.5)	46.9 (±5.1)	57.9 (±5.8)	59.4 (±5.7)	55.0 (±7.1)
8	34.3 (±5.4)	45.5 (±6.8)	43.2 (±7.3)	45.9 (±5.1)	46.8 (±2.6)	50.7 (±4.5)	61.4 (±5.4)	66.3 (±6.2)	64.0 (±5.6)

Mississippi Youth Tobacco Use {1998-2018} Frequent Cigarette Smoking - Public High School

	2018	2017	2016	2015	2014	2013	2012	2011	2010
TOTAL	1.9 (±0.8)	1.7 (±0.7)	2.7 (±1.0)	2.9 (±1.2)	4.2 (±1.8)	4.3 (±1.4)	6.8 (±2.2)	6.5 (±1.8)	7.0 (±1.6)
SEX									
FEMALE	1.3 (±0.7)	1.8 (±0.9)	2.9 (±1.6)	1.8 (±1.2)	3.8 (±2.1)	4.5 (±1.7)	6.2 (±2.8)	4.5 (±1.8)	6.6 (±1.9)
MALE	2.4 (±1.4)	1.8 (±0.9)	2.4 (±1.1)	4.1 (±1.7)	4.5 (±2.0)	4.1 (±1.5)	7.3 (±2.6)	8.6 (±2.4)	7.6 (±1.8)
RACE									
WHITE	3.0 (±1.5)	2.6 (±1.0)	4.8 (±2.0)	4.4 (±2.0)	7.0 (±3.5)	7.5 (±1.7)	10.9 (±4.3)	11.0 (±2.8)	11.8 (±2.8)
BLACK	0.6 (±0.6)	0.8 (±0.6)	0.8 (±0.6)	1.0 (±0.8)	1.3 (±0.8)	1.3 (±1.0)	3.2 (±1.1)	2.4 (±1.3)	2.5 (±1.2)
GRADE									
9	1.4 (±1.0)	1.0 (±1.0)	0.9 (±0.7)	1.4 (±1.0)	2.9 (±2.1)	1.5 (±1.7)	2.7 (±1.5)	3.4 (±1.9)	4.7 (±2.6)
10	1.1 (±1.2)	1.3 (±1.0)	1.4 (±1.0)	3.3 (±2.3)	2.8 (±1.5)	4.4 (±2.1)	7.1 (±3.5)	4.9 (±2.8)	6.2 (±2.5)
11	2.4 (±1.7)	1.1 (±1.0)	2.8 (±2.1)	2.4 (±1.9)	4.6 (±2.3)	4.7 (±2.6)	6.3 (±3.2)	6.2 (±2.7)	7.5 (±3.1)
12	2.7 (±1.5)	3.4 (±1.6)	6.1 (±2.7)	4.9 (±2.7)	7.3 (±5.2)	7.4 (±3.1)	12.5 (±7.3)	12.9 (±4.0)	10.9 (±5.0)

	2009	2008	2006	2004	2003	2002	2000	1999	1998
TOTAL	7.8 (±1.9)	7.8 (±2.6)	7.6 (±1.9)	9.4 (±1.7)	10.1 (±1.0)	9.0 (±1.6)	13.8 (±3.0)	16.6 (±3.0)	14.3 (±3.0)
SEX									
FEMALE	7.4 (±2.5)	6.9 (±2.8)	5.5 (±2.9)	7.7 (±2.1)	9.1 (±1.2)	7.8 (±1.9)	12.5 (±3.6)	16.9 (±4.2)	11.6 (±2.3)
MALE	8.2 (±2.5)	9.0 (±3.3)	9.8 (±2.2)	11.1 (±2.5)	11.0 (±1.4)	10.4 (±2.5)	15.1 (±3.3)	16.1 (±3.6)	17.3 (±3.3)
RACE									
WHITE	12.9 (±2.8)	13.2 (±4.4)	10.9 (±3.7)	13.9 (±2.8)	14.9 (±1.7)	13.9 (±2.2)	21.6 (±4.4)	24.8 (±4.3)	23.2 (±4.5)
BLACK	2.5 (±1.5)	2.4 (±1.8)	4.3 (±2.2)	4.7 (±1.5)	4.1 (±0.8)	4.4 (±1.7)	4.3 (±2.1)	4.1 (±1.2)	3.4 (±2.2)
GRADE									
9	5.4 (±2.1)	5.4 (±2.7)	7.1 (±2.1)	7.8 (±2.1)	7.5 (±1.5)	7.7 (±2.7)	11.1 (±5.1)	12.0 (±3.8)	8.3 (±2.7)
10	7.6 (±3.1)	6.2 (±3.3)	5.5 (±4.5)	9.5 (±2.8)	8.6 (±1.3)	7.8 (±1.9)	14.3 (±4.8)	14.8 (±4.0)	16.7 (±5.0)
11	8.2 (±3.6)	6.6 (±5.1)	7.0 (±2.7)	9.5 (±2.9)	11.2 (±1.9)	7.9 (±3.3)	17.0 (±6.3)	20.2 (±9.0)	17.9 (±5.6)
12	11.3 (±3.5)	14.9 (±4.5)	12.2 (±3.4)	12.2 (±4.3)	14.5 (±2.1)	12.8 (±3.8)	13.9 (±5.9)	21.8 (±7.0)	16.1 (±5.4)



Mississippi Youth Tobacco Use {1998-2018} Frequent Cigarette Smoking - Public Middle School

	2018	2017	2016	2015	2014	2013	2012	2011	2010
TOTAL	0.2 (±0.2)	0.3 (±0.3)	0.4 (±0.3)	0.3 (±0.2)	0.6 (±0.5)	0.7 (±0.4)	0.7 (±0.4)	1.3 (±0.8)	0.9 (±0.4)
SEX									
FEMALE	0.2 (±0.2)	0.2 (±0.2)	0.2 (±0.3)	0.1 (±0.2)	0.4 (±0.5)	0.4 (±0.4)	1.0 (±0.7)	0.4 (±0.4)	0.4 (±0.3)
MALE	0.2 (±0.2)	0.5 (±0.5)	0.7 (±0.6)	0.5 (±0.5)	0.8 (±0.8)	1.0 (±0.7)	0.3 (±0.4)	2.0 (±1.6)	1.4 (±0.8)
RACE									
WHITE	0.4 (±0.3)	0.6 (±0.6)	0.6 (±0.6)	0.6 (±0.4)	1.1 (±1.0)	1.2 (±0.9)	1.0 (±0.8)	1.3 (±0.8)	1.3 (±0.8)
BLACK	0.1 (±0.2)	0.0 (±0.0)	0.2 (±0.3)	0.0 (±0.0)	0.0 (±0.0)	0.2 (±0.4)	0.1 (±0.2)	1.0 (±1.3)	0.3 (±0.4)
GRADE									
6	0.1 (±0.2)	0.0 (±0.0)	0.4 (±0.5)	0.0 (±0.0)	0.0 (±0.0)	0.5 (±0.7)	0.4 (±0.7)	0.8 (±0.8)	0.6 (±0.6)
7	0.4 (±0.4)	0.4 (±0.6)	0.2 (±0.4)	0.4 (±0.3)	0.6 (±0.7)	0.5 (±0.6)	0.4 (±0.4)	1.3 (±0.7)	0.7 (±0.6)
8	0.2 (±0.3)	0.5 (±0.6)	0.7 (±0.8)	0.6 (±0.6)	1.2 (±0.9)	1.1 (±1.1)	1.3 (±0.9)	0.8 (±0.5)	1.4 (±1.0)

	2009	2008	2006	2004	2003	2002	2000	1999	1998
TOTAL	1.9 (±0.8)	1.5 (±0.7)	1.9 (±0.9)	3.0 (±0.7)	2.3 (±0.4)	2.7 (±0.9)	3.8 (±1.1)	4.8 (±1.2)	5.2 (±2.2)
SEX									
FEMALE	1.8 (±0.8)	0.6 (±0.5)	1.9 (±1.0)	2.6 (±1.2)	1.6 (±0.5)	2.2 (±0.8)	3.6 (±1.2)	3.6 (±1.0)	3.6 (±2.7)
MALE	2.0 (±1.2)	2.4 (±1.1)	1.9 (±1.2)	3.2 (±0.8)	2.9 (±0.6)	3.2 (±1.2)	4.1 (±1.3)	5.9 (±1.9)	6.8 (±3.1)
RACE									
WHITE	3.2 (±1.7)	2.1 (±1.2)	3.5 (±1.4)	4.1 (±1.6)	2.8 (±0.7)	3.8 (±1.6)	5.9 (±1.9)	6.9 (±1.6)	6.4 (±3.5)
BLACK	0.7 (±0.8)	0.8 (±0.6)	0.3 (±0.4)	1.8 (±0.5)	1.6 (±0.5)	1.4 (±0.8)	1.7 (±0.9)	1.7 (±1.2)	2.6 (±1.8)
GRADE									
6	0.7 (±0.6)	0.6 (±0.6)	0.7 (±0.7)	1.1 (±0.9)	1.3 (±0.4)	1.3 (±0.8)	2.8 (±2.1)	2.7 (±1.5)	1.2 (±0.6)
7	2.1 (±1.1)	1.2 (±0.8)	1.2 (±0.8)	3.0 (±1.2)	1.8 (±0.4)	3.4 (±1.0)	4.0 (±1.8)	4.1 (±1.9)	5.1 (±3.2)
8	3.0 (±1.6)	2.7 (±1.6)	3.5 (±1.9)	4.7 (±2.0)	3.8 (±1.0)	5.2 (±2.2)	4.8 (±1.5)	7.5 (±2.1)	7.1 (±3.1)

Mississippi Youth Tobacco Use {1998-2018} Current Smokeless Tobacco Use - Public High School

	2018	2017	2016	2015	2014	2013	2012	2011	2010
TOTAL	5.4 (±1.6)	6.6 (±1.5)	7.1 (±1.7)	7.7 (±2.2)	8.0 (±1.8)	8.0 (±2.1)	9.6 (±2.9)	9.9 (±2.3)	9.6 (±2.9)
SEX									
FEMALE	1.3 (±0.7)	3.1 (±1.7)	1.6 (±1.0)	1.5 (±1.1)	2.0 (±1.1)	2.4 (±1.3)	1.7 (±0.8)	2.0 (±1.0)	2.7 (±1.3)
MALE	9.6 (±3.1)	10.2 (±2.6)	12.5 (±2.8)	13.9 (±3.7)	13.9 (±3.3)	13.6 (±3.3)	17.6 (±5.3)	18.0 (±4.6)	16.6 (±5.2)
RACE									
WHITE	8.6 (±2.5)	10.1 (±1.8)	12.6 (±2.5)	13.5 (±2.8)	13.3 (±2.6)	14.5 (±3.1)	16.8 (±3.4)	17.3 (±3.5)	15.9 (±5.0)
BLACK	2.0 (±1.5)	3.1 (±1.7)	1.7 (±1.0)	1.7 (±1.6)	2.7 (±1.1)	2.2 (±1.3)	3.0 (±1.3)	3.2 (±1.2)	3.8 (±1.2)
GRADE									
9	3.8 (±1.8)	5.5 (±1.7)	6.2 (±1.5)	6.4 (±2.4)	6.0 (±2.5)	7.9 (±3.9)	7.0 (±2.4)	9.6 (±4.0)	8.1 (±3.0)
10	5.3 (±2.4)	6.4 (±2.1)	5.7 (±2.4)	9.4 (±4.5)	5.9 (±3.4)	8.6 (±3.4)	13.3 (±6.6)	7.8 (±2.6)	10.4 (±3.7)
11	6.2 (±3.3)	5.7 (±3.7)	8.3 (±3.3)	4.6 (±3.1)	10.5 (±3.0)	6.5 (±3.5)	6.4 (±2.3)	10.8 (±4.8)	12.0 (±4.7)
12	6.2 (±2.3)	8.9 (±3.1)	8.2 (±4.1)	10.1 (±5.8)	10.6 (±5.6)	8.9 (±3.8)	12.1 (±7.6)	12.0 (±3.0)	8.1 (±4.6)

	2009	2008	2006	2004	2003	2002	2000	1999	1998
TOTAL	9.8 (±2.3)	13.8 (±3.5)	9.7 (±2.3)	11.8 (±2.3)	10.4 (±1.3)	9.6 (±1.7)	9.1 (±2.3)	9.6 (±1.7)	9.4 (±2.8)
SEX									
FEMALE	3.4 (±1.4)	7.8 (±3.5)	5.3 (±2.7)	4.5 (±1.2)	2.8 (±0.8)	4.2 (±1.5)	1.3 (±0.8)	1.7 (±1.7)	1.3 (±1.7)
MALE	16.7 (±4.0)	20.1 (±4.8)	13.9 (±6.7)	18.4 (±4.3)	18.2 (±2.3)	15.1 (±2.9)	16.9 (±4.3)	18.2 (±3.1)	18.1 (±4.3)
RACE									
WHITE	16.7 (±3.3)	19.1 (±4.1)	13.8 (±4.0)	17.3 (±2.9)	15.1 (±2.0)	14.5 (±1.6)	14.6 (±3.7)	13.5 (±2.4)	16.0 (±4.0)
BLACK	2.9 (±1.6)	7.8 (±5.8)	5.4 (±1.9)	5.9 (±1.6)	4.6 (±1.1)	4.4 (±1.5)	2.2 (±0.9)	2.9 (±1.2)	1.5 (±1.5)
GRADE									
9	10.0 (±3.8)	12.5 (±4.4)	8.8 (±8.0)	10.8 (±3.3)	10.0 (±1.5)	8.4 (±2.3)	8.8 (±3.5)	8.8 (±2.4)	9.1 (±3.5)
10	11.4 (±3.3)	13.3 (±5.3)	14.4 (±4.0)	12.0 (±2.7)	11.9 (±2.0)	9.0 (±2.5)	7.8 (±3.5)	8.1 (±2.4)	11.7 (±4.5)
11	7.4 (±2.8)	12.4 (±7.5)	5.9 (±3.2)	11.7 (±4.3)	10.0 (±2.2)	12.5 (±3.0)	8.4 (±4.4)	9.8 (±2.9)	6.8 (±5.1)
12	9.9 (±3.4)	16.6 (±5.5)	8.9 (±3.7)	13.0 (±5.2)	9.8 (±1.9)	8.5 (±3.1)	11.6 (±5.3)	12.2 (±5.7)	8.6 (±2.8)

Mississippi Youth Tobacco Use {1998-2018} Current Smokeless Tobacco Use - Public Middle School

	2018	2017	2016	2015	2014	2013	2012	2011	2010
TOTAL	1.8 (±0.7)	3.0 (±1.7)	4.0 (±1.4)	3.6 (±1.1)	4.5 (±1.8)	4.4 (±1.8)	4.8 (±1.9)	5.5 (±1.5)	6.4 (±2.1)
SEX									
FEMALE	0.6 (±0.5)	1.5 (±0.9)	1.4 (±1.1)	1.1 (±0.7)	1.3 (±0.9)	1.0 (±0.8)	1.5 (±0.9)	1.8 (±0.8)	2.5 (±1.4)
MALE	3.1 (±1.0)	4.6 (±2.7)	6.4 (±2.6)	5.9 (±2.1)	7.7 (±3.3)	7.8 (±3.1)	8.1 (±3.1)	9.0 (±3.0)	10.2 (±3.3)
RACE									
WHITE	2.7 (±1.1)	4.9 (±2.6)	6.1 (±2.2)	5.4 (±1.6)	6.2 (±3.4)	8.3 (±3.1)	9.0 (±2.7)	8.7 (±2.7)	10.8 (±2.5)
BLACK	0.8 (±0.5)	1.4 (±1.1)	1.8 (±1.4)	1.7 (±1.0)	3.0 (±1.7)	0.8 (±0.8)	1.4 (±1.0)	2.0 (±0.8)	2.4 (±1.4)
GRADE									
6	1.7 (±1.0)	1.4 (±1.0)	2.8 (±1.8)	1.9 (±1.2)	2.6 (±2.3)	3.0 (±1.7)	4.0 (±3.7)	3.9 (±2.7)	5.3 (±4.1)
7	1.5 (±1.0)	2.3 (±2.1)	3.4 (±2.0)	3.9 (±1.4)	5.7 (±3.4)	3.6 (±2.3)	3.3 (±2.0)	5.7 (±2.5)	7.2 (±2.7)
8	2.3 (±1.6)	5.5 (±3.0)	5.6 (±2.2)	4.7 (±2.4)	5.4 (±3.2)	6.8 (±3.4)	7.4 (±3.1)	6.7 (±2.8)	6.8 (±2.5)

	2009	2008	2006	2004	2003	2002	2000	1999	1998
TOTAL	5.3 (±1.9)	7.2 (±1.6)	7.7 (±2.2)	8.2 (±1.3)	6.4 (±1.0)	8.7 (±1.0)	7.5 (±2.0)	9.1 (±1.7)	9.6 (±2.1)
SEX									
FEMALE	1.9 (±1.3)	1.6 (±0.7)	4.1 (±1.5)	5.1 (±1.0)	2.8 (±0.5)	4.6 (±0.9)	2.8 (±1.3)	3.5 (±1.1)	4.2 (±1.8)
MALE	8.6 (±3.0)	12.3 (±2.7)	11.1 (±3.7)	11.6 (±2.4)	9.8 (±1.9)	12.6 (±2.1)	11.8 (±4.0)	14.5 (±3.0)	14.8 (±3.9)
RACE									
WHITE	9.3 (±3.0)	10.4 (±2.1)	12.1 (±2.8)	10.6 (±2.8)	8.3 (±1.9)	11.2 (±2.1)	12.0 (±3.5)	11.6 (±2.4)	12.7 (±3.1)
BLACK	1.6 (±0.9)	3.9 (±1.7)	3.7 (±1.9)	6.0 (±1.0)	3.8 (±0.6)	4.7 (±1.2)	2.5 (±1.0)	6.5 (±2.2)	4.8 (±1.9)
GRADE									
6	4.1 (±2.6)	4.7 (±2.4)	5.3 (±2.2)	5.7 (±1.4)	5.4 (±1.0)	8.7 (±1.9)	5.5 (±2.2)	9.5 (±3.2)	6.5 (±2.5)
7	4.6 (±2.2)	7.5 (±3.0)	6.3 (±2.9)	8.2 (±1.9)	5.8 (±1.0)	7.6 (±1.6)	9.5 (±4.1)	7.6 (±3.3)	8.7 (±3.8)
8	7.3 (±4.2)	9.5 (±3.3)	10.8 (±3.4)	10.8 (±3.4)	7.8 (±2.0)	11.0 (±3.0)	7.4 (±2.7)	10.1 (±2.5)	12.0 (±4.2)

Mississippi Youth Tobacco Use {1998-2018} Ever Tried Smokeless Tobacco - Public High School

	2018	2017	2016	2015	2014	2013	2012	2011	2010
TOTAL	12.9 (±2.7)	15.0 (±3.2)	14.2 (±2.5)	16.2 (±4.0)	16.0 (±3.0)	15.8 (±3.8)	17.8 (±3.8)	19.5 (±4.1)	20.2 (±3.6)
SEX									
FEMALE	5.3 (±1.4)	9.1 (±2.8)	5.9 (±2.5)	5.1 (±2.3)	6.7 (±1.9)	6.4 (±2.0)	6.6 (±1.6)	7.5 (±1.9)	8.4 (±2.7)
MALE	20.8 (±4.4)	21.2 (±5.5)	22.3 (±3.4)	27.7 (±5.6)	25.5 (±5.0)	25.3 (±5.5)	29.3 (±6.2)	32.0 (±7.5)	32.3 (±5.8)
RACE									
WHITE	21.8 (±3.6)	22.2 (±2.6)	22.7 (±3.7)	28.1 (±4.5)	27.5 (±3.4)	27.8 (±5.3)	29.4 (±3.8)	33.1 (±5.1)	33.5 (±4.3)
BLACK	4.6 (±1.6)	7.8 (±2.8)	6.1 (±2.0)	4.6 (±2.2)	5.3 (±1.6)	5.1 (±2.2)	7.0 (±1.9)	7.4 (±2.5)	8.3 (±2.5)
GRADE									
9	9.1 (±3.0)	11.3 (±2.6)	12.1 (±2.4)	13.7 (±4.6)	12.3 (±4.3)	14.4 (±6.7)	13.9 (±3.9)	18.7 (±6.0)	15.2 (±4.9)
10	12.5 (±4.5)	14.7 (±3.2)	14.1 (±4.0)	18.4 (±5.3)	15.5 (±5.4)	16.3 (±6.3)	21.8 (±7.9)	16.7 (±6.1)	22.7 (±5.3)
11	17.8 (5.4)	15.4 (6.8)	13.6 (±3.7)	13.3 (±6.4)	18.6 (±5.8)	14.6 (±5.4)	16.8 (±4.7)	20.7 (±7.5)	20.9 (±4.6)
12	12.7 (±3.7)	19.5 (±5.8)	17.0 (±6.9)	19.7 (±8.5)	18.9 (±5.5)	18.4 (±5.5)	19.3 (±8.2)	23.1 (±5.5)	23.4 (±9.1)

	2009	2008	2006	2004	2003	2002	2000	1999	1998
TOTAL	18.6 (±3.9)	22.8 (±3.3)	19.1 (±4.9)	22.6 (±3.1)	22.2 (±1.7)	20.7 (±2.6)	25.0 (±4.2)	24.3 (±4.5)	26.2 (±4.2)
SEX									
FEMALE	9.5 (±2.8)	12.6 (±2.5)	7.8 (±4.1)	9.5 (±2.0)	10.0 (±1.1)	10.2 (±1.5)	10.8 (±2.6)	7.6 (±3.3)	11.4 (±3.7)
MALE	28.3 (±6.0)	34.0 (±6.1)	30.7 (±7.0)	35.3 (±5.2)	35.3 (±3.1)	32.4 (±5.2)	40.2 (±6.9)	42.3 (±5.8)	42.2 (±6.0)
RACE									
WHITE	30.7 (±4.2)	32.1 (±4.4)	31.5 (±4.2)	32.8 (±3.4)	31.1 (±2.1)	30.7 (±3.1)	36.0 (±5.6)	35.4 (±5.5)	38.5 (±5.8)
BLACK	6.6 (±2.6)	13.1 (±3.6)	7.3 (±4.9)	12.0 (±2.2)	12.0 (±1.5)	11.0 (±1.8)	12.8 (±2.4)	6.7 (±2.7)	11.6 (±2.9)
GRADE									
9	17.8 (±5.1)	23.3 (±6.5)	20.7 (±5.3)	20.4 (±4.0)	21.5 (±2.1)	19.4 (±4.1)	23.7 (±5.4)	25.3 (±5.4)	25.7 (±5.4)
10	18.9 (±5.4)	25.3 (±7.2)	19.3 (±9.6)	21.3 (±3.5)	22.4 (±2.0)	21.8 (±4.0)	21.9 (±6.4)	20.5 (±5.5)	27.0 (±6.9)
11	17.6 (±5.4)	18.4 (±6.7)	17.8 (±5.8)	24.8 (±6.3)	23.0 (±3.1)	20.7 (±3.9)	26.7 (±6.4)	25.3 (±9.7)	25.4 (±7.6)
12	20.3 (±6.3)	23.2 (±5.2)	18.1 (±5.4)	25.1 (±5.7)	21.8 (±3.2)	21.2 (±4.6)	28.3 (±7.4)	25.3 (±6.2)	25.8 (±5.4)



Mississippi Youth Tobacco Use {1998-2018} Ever Tried Smokeless Tobacco - Public Middle School

	2018	2017	2016	2015	2014	2013	2012	2011	2010
TOTAL	6.0 (±1.8)	8.4 (±2.5)	7.9 (±2.1)	8.6 (±2.3)	8.8 (±2.4)	9.5 (±2.8)	11.4 (±3.6)	11.4 (±2.4)	11.1 (±3.3)
SEX									
FEMALE	3.8 (±1.6)	5.2 (±2.5)	3.5 (±1.4)	4.9 (±1.7)	4.1 (±1.7)	4.3 (±2.0)	5.5 (±2.2)	5.9 (±1.6)	5.1 (±2.4)
MALE	8.2 (±2.7)	11.4 (±2.9)	12.1 (±3.8)	12.1 (±3.8)	13.5 (±4.3)	14.4 (±4.1)	17.0 (±5.5)	16.6 (±4.3)	16.8 (±4.9)
RACE									
WHITE	9.7 (±2.4)	11.8 (±4.0)	12.8 (±3.3)	14.8 (±2.7)	12.6 (±4.2)	15.9 (±4.2)	21.3 (±4.8)	17.5 (±4.1)	18.4 (±3.7)
BLACK	2.2 (±1.2)	5.0 (±2.2)	2.9 (±1.1)	2.4 (±1.4)	5.2 (±2.1)	3.6 (±1.7)	2.4 (±1.2)	5.6 (±2.1)	4.2 (±2.1)
GRADE									
6	5.1 (±2.3)	4.7 (±2.3)	5.0 (±2.9)	4.9 (±2.5)	5.9 (±4.0)	8.8 (±3.8)	8.1 (±5.9)	9.4 (±4.3)	8.2 (±4.2)
7	4.2 (±1.9)	8.0 (±4.1)	7.4 (±2.6)	9.6 (±2.7)	9.5 (±4.1)	6.9 (±3.4)	10.3 (±5.5)	10.9 (±3.6)	12.8 (±4.5)
8	8.7 (3.9)	12.6 (4.6)	11.1 (±3.8)	11.0 (±4.8)	11.1 (±4.5)	12.8 (±4.4)	15.8 (±4.6)	13.4 (±5.0)	12.1 (±5.0)

	2009	2008	2006	2004	2003	2002	2000	1999	1998
TOTAL	11.8 (±2.8)	14.4 (±1.7)	15.5 (±3.8)	14.7 (±2.7)	14.1 (±1.7)	17.8 (±1.4)	19.7 (±2.7)	18.8 (±2.7)	18.1 (±3.1)
SEX									
FEMALE	6.3 (±1.9)	6.9 (±1.4)	9.2 (±2.9)	9.6 (±2.2)	8.1 (±0.9)	9.6 (±1.6)	9.7 (±1.8)	9.6 (±2.3)	7.2 (±2.0)
MALE	17.1 (±4.6)	21.6 (±3.3)	21.3 (±5.9)	20.2 (±3.7)	20.0 (±3.0)	26.2 (±2.8)	29.4 (±4.7)	27.6 (±4.3)	28.5 (±5.5)
RACE									
WHITE	19.3 (±4.0)	20.4 (±2.5)	23.9 (±3.9)	19.7 (±4.3)	17.8 (±3.2)	21.8 (±2.8)	26.7 (±4.2)	24.2 (±3.3)	24.0 (±3.1)
BLACK	4.9 (±1.8)	8.6 (±2.3)	7.9 (±3.0)	10.0 (±2.1)	10.1 (±0.9)	12.4 (±2.0)	11.7 (±2.4)	13.8 (±3.6)	10.5 (±3.2)
GRADE									
6	8.0 (±3.8)	10.2 (±2.9)	12.1 (±3.3)	10.4 (±2.8)	12.1 (±1.8)	17.3 (±3.1)	13.7 (±3.2)	16.6 (±4.2)	12.9 (±4.9)
7	11.6 (±3.7)	14.5 (±3.5)	12.6 (±5.3)	14.4 (±3.6)	13.4 (±2.2)	17.3 (±2.6)	23.3 (±5.0)	19.1 (±5.1)	19.0 (±5.5)
8	15.9 (±5.6)	18.9 (±2.6)	21.2 (±6.1)	19.3 (±4.1)	16.8 (±3.0)	20.2 (±4.5)	22.2 (±4.1)	20.5 (±4.1)	20.7 (±5.3)

Mississippi Youth Tobacco Use {1998-2018} Frequent Smokeless Tobacco Use - Public High School

	2018	2017	2016	2015	2014	2013	2012	2011	2010
TOTAL	1.8 (±0.8)	2.8 (±1.0)	3.4 (±1.0)	3.6 (±1.2)	3.7 (±1.5)	3.5 (±1.2)	5.1 (±2.6)	4.6 (±1.6)	4.5 (±2.3)
SEX									
FEMALE	0.5 (±0.5)	1.2 (±0.8)	0.1 (±0.2)	0.2 (±0.3)	0.2 (±0.2)	0.2 (±0.3)	0.3 (±0.4)	0.3 (±0.6)	0.5 (±0.5)
MALE	3.1 (±1.6)	4.6 (±1.8)	6.5 (±1.9)	6.9 (±2.3)	7.2 (±3.0)	6.9 (±2.5)	9.9 (±5.0)	9.0 (±3.0)	8.6 (±4.4)
RACE									
WHITE	3.0 (±1.5)	4.2 (±1.1)	6.5 (±2.1)	6.6 (±1.6)	6.9 (±2.4)	6.8 (±2.4)	9.3 (±3.7)	8.9 (±2.6)	8.0 (±3.8)
BLACK	0.6 (±0.5)	1.2 (±1.1)	0.4 (±0.5)	0.4 (±0.5)	0.5 (±0.5)	0.5 (±0.5)	1.3 (±1.0)	0.8 (±0.8)	1.4 (±0.7)
GRADE									
9	1.5 (±1.0)	2.0 (±1.5)	2.3 (±1.2)	2.5 (±1.8)	1.3 (±1.0)	3.3 (±2.7)	2.0 (±1.1)	3.4 (±2.3)	3.3 (±2.2)
10	1.2 (±0.8)	2.8 (±1.8)	2.9 (±1.7)	3.4 (±2.3)	1.8 (±1.4)	3.8 (±1.8)	8.1 (±5.7)	3.8 (±2.2)	3.3 (±2.5)
11	1.9 (±1.8)	1.7 (±1.5)	3.8 (±1.8)	2.3 (±1.8)	5.3 (±2.8)	2.9 (±1.6)	3.7 (±1.9)	6.1 (±3.3)	5.9 (±3.8)
12	2.6 (±1.7)	4.8 (±1.8)	4.9 (±2.3)	6.2 (±3.8)	7.6 (±5.1)	4.1 (±2.5)	7.0 (±7.5)	5.7 (±2.5)	6.1 (±4.2)

	2009	2008	2006	2004	2003	2002	2000	1999	1998
TOTAL	4.3 (±1.5)	4.7 (±1.5)	2.8 (±1.4)	4.2 (±1.3)	3.9 (±0.7)	3.3 (±1.0)	3.9 (±1.3)	3.2 (±1.0)	3.7 (±1.8)
SEX									
FEMALE	0.5 (±0.4)	1.2 (±0.8)	0.3 (±0.3)	0.5 (±0.3)	0.5 (±0.3)	0.9 (±0.5)	0.3 (±0.4)	0.3 (±0.4)	0.4 (±0.5)
MALE	8.4 (±3.1)	8.6 (±2.9)	5.5 (±2.9)	7.6 (±2.7)	7.4 (±1.2)	6.1 (±1.8)	7.6 (±2.5)	6.4 (±1.8)	7.3 (±3.3)
RACE									
WHITE	7.7 (±2.6)	7.8 (±2.6)	5.3 (±1.9)	7.3 (±2.3)	6.6 (±1.1)	6.3 (±1.5)	6.7 (±2.0)	5.1 (±1.7)	6.4 (±3.1)
BLACK	0.8 (±1.0)	1.8 (±1.7)	0.2 (±0.4)	1.1 (±0.7)	0.8 (±0.4)	0.6 (±0.5)	0.5 (±0.6)	0.6 (±0.7)	0.2 (±1.0)
GRADE									
9	3.8 (±2.1)	4.4 (±2.0)	2.1 (±2.2)	2.9 (±1.8)	2.9 (±0.8)	2.7 (±1.1)	3.8 (±2.2)	1.2 (±1.0)	2.2 (±1.6)
10	4.9 (±2.2)	4.5 (±3.2)	2.7 (±2.0)	3.0 (±1.5)	4.4 (±1.0)	3.2 (±1.5)	3.7 (±2.3)	3.1 (±1.4)	5.5 (±4.5)
11	4.3 (±2.2)	4.4 (±4.0)	2.2 (±2.0)	5.7 (±2.8)	4.3 (±1.4)	4.2 (±1.9)	3.3 (±3.0)	4.4 (±3.2)	3.7 (±3.1)
12	4.0 (±2.5)	5.8 (±3.0)	4.7 (±2.5)	6.4 (±2.6)	4.4 (±1.4)	3.4 (±1.8)	5.1 (±2.8)	4.8 (±2.6)	3.5 (±2.3)

Mississippi Youth Tobacco Use {1998-2018} Frequent Smokeless Tobacco Use - Public Middle School

	2018	2017	2016	2015	2014	2013	2012	2011	2010
TOTAL	0.3 (±0.3)	0.8 (±0.7)	0.9 (±0.4)	0.9 (±0.5)	1.0 (±0.9)	1.5 (±1.0)	0.8 (±0.5)	1.5 (±0.8)	1.1 (±0.4)
SEX									
FEMALE	0.1 (±0.3)	0.3 (±0.4)	0.3 (±0.3)	0.1 (±0.1)	0.0 (±0.0)	0.0 (±0.0)	0.2 (±0.2)	0.3 (±0.4)	0.1 (±0.2)
MALE	0.5 (±0.5)	1.3 (±1.3)	1.3 (±0.7)	1.8 (±0.9)	2.0 (±1.7)	3.0 (±2.0)	1.4 (±0.9)	2.6 (±1.6)	2.1 (±0.8)
RACE									
WHITE	0.4 (±0.4)	1.6 (±1.4)	1.4 (±0.7)	1.9 (±1.0)	1.9 (±1.9)	3.1 (±2.0)	1.6 (±0.9)	2.3 (±1.7)	1.9 (±0.9)
BLACK	0.1 (±0.2)	0.0 (±0.0)	0.1 (±0.2)	0.0 (±0.0)	0.1 (±0.3)	0.1 (±0.2)	0.1 (±0.2)	0.3 (±0.3)	0.5 (±0.5)
GRADE									
6	0.3 (±0.4)	0.2 (±0.3)	0.2 (±0.3)	0.1 (±0.1)	0.2 (±0.4)	0.6 (±0.9)	0.0 (±0.0)	0.9 (±0.9)	0.3 (±0.5)
7	0.2 (±0.4)	1.3 (±1.4)	1.3 (±0.9)	1.1 (±0.9)	0.8 (±0.7)	0.8 (±0.8)	0.4 (±0.5)	1.7 (±1.3)	1.2 (±0.9)
8	0.5 (±0.6)	0.9 (±1.0)	1.0 (±0.7)	1.6 (±1.2)	2.1 (±2.2)	3.2 (±2.3)	2.0 (±1.1)	1.6 (±1.4)	1.9 (±1.0)

	2009	2008	2006	2004	2003	2002	2000	1999	1998
TOTAL	1.0 (±0.8)	1.7 (±0.8)	2.2 (±1.2)	1.3 (±0.5)	1.2 (±0.5)	2.1 (±0.6)	1.5 (±0.9)	1.3 (±0.5)	2.2 (±1.1)
SEX									
FEMALE	0.2 (±0.3)	0.6 (±0.4)	0.3 (±0.3)	0.3 (±0.2)	0.4 (±0.2)	0.8 (±0.5)	0.2 (±0.5)	0.0 (±0.0)	0.9 (±0.9)
MALE	1.8 (±1.5)	2.8 (±1.5)	4.1 (±2.2)	2.3 (±1.0)	2.1 (±0.8)	3.3 (±1.0)	2.6 (±1.8)	2.5 (±1.0)	3.5 (±2.1)
RACE									
WHITE	2.0 (±1.6)	2.8 (±1.4)	4.2 (±2.0)	1.7 (±1.0)	1.8 (±0.7)	2.5 (±0.9)	2.6 (±1.7)	2.1 (±0.7)	2.4 (±2.2)
BLACK	0.1 (±0.2)	0.4 (±0.)	0.5 (±0.6)	0.9 (±0.6)	0.5 (±0.2)	1.4 (±0.8)	0.0 (±0.0)	0.3 (±0.6)	1.0 (±1.1)
GRADE									
6	0.1 (±0.2)	1.0 (±0.8)	1.6 (±1.3)	0.3 (±0.4)	0.8 (±0.4)	1.0 (±0.6)	1.2 (±2.1)	1.5 (±1.1)	0.5 (±0.4)
7	1.0 (±0.8)	1.5 (±1.0)	1.2 (±1.0)	1.7 (±1.0)	1.2 (±0.5)	2.1 (±0.8)	1.3 (±1.1)	1.0 (±0.9)	1.7 (±1.5)
8	2.0 (±2.1)	2.6 (±1.7)	3.7 (±2.7)	1.7 (±1.1)	1.7 (±1.1)	3.7 (±1.2)	2.0 (±1.5)	1.3 (±0.6)	3.0 (±1.8)

Mississippi Youth Tobacco Use {1998-2018} Current Cigar Smoking - Public High School

	2018	2017	2016	2015	2014	2013	2012	2011	2010
TOTAL	10.3 (±2.1)	8.4 (±1.7)	9.2 (±1.9)	8.7 (±1.4)	10.3 (±1.9)	10.9 (±1.9)	11.9 (±2.0)	14.2 (±2.3)	13.8 (±2.0)
SEX									
FEMALE	10.1 (±2.9)	7.5 (±2.6)	7.3 (±2.1)	5.5 (±1.8)	7.6 (±2.6)	8.0 (±2.2)	9.3 (±2.4)	8.7 (±1.9)	11.0 (±2.0)
MALE	10.6 (±2.4)	9.3 (±2.3)	11.2 (±2.4)	12.2 (±2.2)	12.6 (±2.5)	13.8 (±3.3)	14.4 (±3.6)	19.8 (±3.1)	16.9 (±3.2)
RACE									
WHITE	8.5 (±2.8)	9.4 (±2.2)	10.0 (±2.3)	10.0 (±2.1)	9.5 (±2.0)	12.3 (±2.5)	10.7 (±2.7)	15.1 (±2.7)	15.5 (±2.7)
BLACK	11.6 (±2.7)	6.8 (±2.0)	8.5 (±2.4)	6.7 (±2.1)	11.0 (±3.2)	10.0 (±2.5)	12.5 (±2.8)	13.2 (±3.4)	12.0 (±2.1)
GRADE									
9	9.7 (±2.8)	5.7 (±2.0)	7.2 (±2.5)	6.3 (±2.5)	7.4 (±2.7)	6.4 (±2.7)	9.1 (±3.0)	10.3 (±4.7)	10.8 (±2.6)
10	10.4 (±3.5)	6.9 (±1.8)	9.6 (±3.5)	10.1 (±3.7)	10.7 (±4.6)	9.5 (±3.0)	14.0 (±5.2)	15.9 (±4.4)	13.6 (±3.0)
11	9.9 (±4.5)	8.1 (±3.9)	9.3 (±3.2)	8.1 (±2.6)	10.7 (±3.3)	14.7 (±5.2)	10.9 (±3.2)	14.4 (±5.1)	16.5 (±4.2)
12	11.3 (±3.4)	13.3 (±3.3)	11.0 (±4.5)	10.9 (±4.1)	13.0 (±3.7)	14.5 (±4.3)	14.1 (±6.5)	17.0 (±5.8)	15.4 (±3.9)

	2009	2008	2006	2004	2003	2002	2000	1999	1998
TOTAL	13.8 (±2.2)	16.3 (±3.7)	13.6 (±4.0)	18.0 (±1.8)	17.8 (±1.2)	N/A	18.6 (±2.9)	20.3 (±1.6)	22.3 (±3.9)
SEX									
FEMALE	9.3 (±2.9)	11.3 (±3.9)	8.5 (±4.5)	13.4 (±2.4)	12.9 (±1.3)	N/A	11.2 (±3.1)	13.4 (±2.0)	13.8 (±3.3)
MALE	18.3 (±3.1)	21.3 (±4.6)	18.9 (±4.5)	22.1 (±2.4)	22.7 (±1.8)	N/A	26.2 (±3.7)	27.8 (±2.8)	31.1 (±5.4)
RACE									
WHITE	14.9 (±3.0)	16.0 (±4.3)	14.4 (±4.5)	20.7 (±3.1)	18.7 (±1.9)	N/A	19.6 (±4.1)	17.9 (±1.7)	23.5 (±4.4)
BLACK	12.4 (±3.7)	15.2 (±5.6)	12.6 (±3.8)	15.0 (±2.6)	15.6 (±1.6)	N/A	15.7 (±3.5)	22.5 (±2.5)	20.1 (±5.1)
GRADE									
9	11.0 (±3.8)	13.7 (±4.0)	11.4 (±3.1)	17.2 (±3.8)	17.4 (±1.6)	N/A	20.7 (±4.1)	19.2 (±3.3)	18.9 (±5.6)
10	15.2 (±3.2)	15.3 (±4.9)	12.0 (±7.4)	17.5 (±4.2)	16.8 (±1.8)	N/A	16.8 (±3.9)	23.6 (±3.2)	24.7 (±8.5)
11	12.8 (±4.2)	13.2 (±10.1)	16.3 (±4.7)	19.1 (±3.7)	19.2 (±2.9)	N/A	18.6 (±6.5)	17.9 (±4.1)	23.8 (±5.4)
12	17.1 (±4.0)	23.1 (±5.6)	16.2 (±4.3)	19.0 (±4.3)	17.9 (±1.9)	N/A	16.4 (±4.6)	20.8 (±3.5)	22.0 (±6.1)

Mississippi Youth Tobacco Use {1998-2018} Current Cigar Smoking - Public Middle School

APPENDIX {CIGARS}

	2018	2017	2016	2015	2014	2013	2012	2011	2010
TOTAL	4.0 (±1.3)	2.9 (±1.1)	3.5 (±1.1)	2.9 (±0.9)	5.4 (±2.3)	4.2 (±1.3)	4.2 (±1.5)	4.8 (±1.4)	5.5 (±1.3)
SEX									
FEMALE	4.2 (±1.7)	2.4 (±1.4)	2.0 (±1.2)	2.6 (±1.5)	2.6 (±1.3)	2.4 (±1.3)	2.7 (±1.0)	3.5 (±1.3)	4.2 (±1.5)
MALE	3.7 (±1.9)	3.5 (±1.4)	5.0 (±1.8)	3.2 (±0.9)	8.1 (±4.1)	5.9 (±1.6)	5.5 (±2.3)	6.1 (±1.9)	6.6 (±1.9)
RACE									
WHITE	2.4 (±1.2)	3.1 (±1.3)	2.6 (±1.7)	2.2 (±1.1)	3.4 (±2.0)	2.6 (±0.9)	3.8 (±1.6)	3.6 (±1.9)	4.5 (±1.4)
BLACK	5.0 (±2.0)	2.5 (±1.2)	4.0 (±1.7)	3.6 (±1.6)	7.7 (±3.5)	5.5 (±1.6)	4.6 (±2.5)	5.9 (±2.0)	6.3 (±2.1)
GRADE									
6	3.4 (±1.7)	1.0 (±1.0)	3.4 (±2.5)	0.9 (±0.7)	3.5 (±3.9)	3.4 (±1.8)	3.0 (±2.5)	4.3 (±1.7)	3.0 (±1.3)
7	3.0 (±1.7)	2.7 (±1.6)	2.9 (±1.5)	4.9 (±2.1)	4.1 (±3.8)	4.5 (±1.3)	2.9 (±1.7)	4.9 (±2.6)	5.5 (±2.3)
8	5.6 (±2.5)	5.0 (±2.2)	4.3 (±2.5)	2.9 (±1.3)	8.7 (±3.5)	4.6 (±2.5)	6.9 (±2.6)	4.9 (±2.2)	7.9 (±2.1)

	2009	2008	2006	2004	2003	2002	2000	1999	1998
TOTAL	6.3 (±1.4)	9.3 (±2.2)	6.1 (±1.7)	10.6 (±1.8)	9.0 (±1.1)	N/A	12.1 (±2.2)	16.6 (±2.7)	16.4 (±3.5)
SEX									
FEMALE	4.4 (±1.5)	6.6 (±2.2)	4.0 (±1.5)	8.5 (±1.5)	6.9 (±1.1)	N/A	10.2 (±2.8)	10.8 (±2.6)	12.3 (±4.5)
MALE	8.1 (±2.3)	11.8 (±3.0)	8.3 (±2.7)	12.7 (±2.8)	10.9 (±1.2)	N/A	13.9 (±2.7)	22.1 (±3.6)	20.4 (±3.9)
RACE									
WHITE	5.6 (±2.6)	6.5 (±2.0)	4.7 (±2.2)	9.0 (±1.8)	6.5 (±1.0)	N/A	9.2 (±2.2)	14.2 (±2.5)	12.3 (±2.3)
BLACK	6.6 (±1.8)	11.4 (±3.5)	7.4 (±2.2)	12.1 (±2.8)	11.1 (±1.3)	N/A	14.8 (±3.9)	19.2 (±4.1)	19.9 (±5.4)
GRADE									
6	3.4 (±1.8)	5.1 (±4.0)	4.4 (±1.7)	7.6 (±1.5)	6.1 (±1.1)	N/A	9.7 (±4.8)	12.0 (±4.0)	7.9 (±2.1)
7	5.9 (±2.5)	10.9 (±4.0)	4.9 (±3.1)	13.0 (±3.7)	8.8 (±1.6)	N/A	11.8 (±3.5)	16.0 (±3.6)	17.1 (±8.3)
8	9.7 (±2.8)	12.1 (±2.9)	8.8 (±3.1)	11.2 (±4.0)	12.0 (±1.5)	N/A	14.9 (±4.5)	21.6 (±4.0)	21.2 (±3.9)

Mississippi Youth Tobacco Use {1998-2018} Ever Tried a Cigar - Public High School

	2018	2017	2016	2015	2014	2013	2012	2011	2010
TOTAL	27.4 (±2.8)	20.0 (±2.6)	22.8 (±2.4)	22.0 (±3.1)	24.8 (±2.9)	25.0 (±3.8)	29.5 (±3.3)	28.7 (±3.7)	29.1 (±3.6)
SEX									
FEMALE	24.2 (±4.0)	18.2 (±3.7)	19.0 (±3.4)	15.6 (±2.8)	18.6 (±2.9)	20.2 (±4.5)	25.2 (±4.1)	20.7 (±3.7)	24.9 (±4.4)
MALE	30.8 (±3.7)	21.7 (±4.1)	26.4 (±3.2)	28.2 (±4.6)	30.5 (±4.4)	29.7 (±4.9)	34.0 (±5.3)	36.9 (±4.5)	33.3 (±5.0)
RACE									
WHITE	27.2 (±3.4)	22.3 (±3.0)	25.8 (±3.1)	26.2 (±4.6)	27.5 (±3.9)	28.3 (±4.9)	30.9 (±5.6)	32.8 (±4.6)	34.0 (±5.0)
BLACK	27.5 (±3.5)	17.1 (±3.5)	20.6 (±3.3)	17.3 (±3.2)	22.4 (±4.2)	22.2 (±5.0)	28.1 (±4.0)	24.8 (±5.1)	24.6 (±4.0)
GRADE									
9	23.9 (±4.7)	14.7 (±2.3)	17.8 (±4.6)	15.1 (±4.9)	17.2 (±4.5)	15.8 (±4.6)	19.4 (±5.9)	24.2 (±5.2)	21.5 (±3.5)
10	26.5 (±4.4)	18.2 (±3.3)	22.8 (±4.7)	26.7 (±4.8)	24.7 (±6.4)	24.2 (±5.1)	34.5 (±5.3)	25.7 (±4.5)	29.4 (±5.3)
11	29.8 (±5.9)	18.7 (±6.4)	26.0 (±4.6)	22.0 (±6.8)	27.8 (±5.3)	28.4 (±7.5)	29.9 (±5.1)	30.6 (±7.8)	32.6 (±6.5)
12	30.2 (±4.2)	28.8 (±4.3)	26.0 (±6.0)	25.5 (±6.5)	31.8 (±5.8)	34.4 (±7.5)	36.5 (±7.3)	36.5 (±7.6)	35.3 (±5.6)

	2009	2008	2006	2004	2003	2002	2000	1999	1998
TOTAL	29.8 (±2.8)	32.5 (±3.6)	37.7 (±3.0)	39.2 (±2.7)	39.4 (±1.3)	N/A	48.8 (±4.2)	54.7 (±3.0)	53.0 (±3.0)
SEX									
FEMALE	23.2 (±3.2)	25.4 (±4.9)	30.8 (±3.7)	31.5 (±3.3)	31.9 (±1.8)	N/A	39.4 (±5.9)	44.3 (±3.7)	43.2 (±3.6)
MALE	36.6 (±4.3)	40.2 (±5.4)	44.9 (±4.4)	46.7 (±4.1)	47.4 (±1.8)	N/A	58.9 (±4.0)	65.8 (±3.5)	63.5 (±3.5)
RACE									
WHITE	33.1 (±4.2)	35.7 (±4.0)	38.9 (±3.6)	41.4 (±3.8)	42.4 (±2.2)	N/A	52.5 (±6.5)	54.2 (±3.6)	54.4 (±4.7)
BLACK	26.2 (±4.3)	28.5 (±5.2)	36.8 (±5.3)	36.9 (±3.8)	35.6 (±1.8)	N/A	44.0 (±5.4)	54.3 (±4.6)	51.1 (±4.9)
GRADE									
9	24.8 (±4.4)	29.3 (±6.7)	39.0 (±3.3)	35.3 (±5.2)	36.7 (±2.3)	N/A	44.6 (±6.1)	53.1 (±3.4)	50.0 (±6.3)
10	31.0 (±5.2)	34.3 (±4.8)	36.6 (±9.8)	39.2 (±4.5)	36.7 (±1.9)	N/A	46.7 (±5.7)	52.9 (±6.9)	49.9 (±6.9)
11	28.4 (±5.1)	26.5 (±7.9)	30.7 (±9.6)	39.3 (±4.6)	41.9 (±3.3)	N/A	53.5 (±6.4)	55.0 (±6.9)	57.5 (±4.8)
12	37.3 (±5.5)	40.7 (±4.8)	45.8 (±4.8)	45.7 (±4.7)	43.7 (±2.4)	N/A	51.1 (±7.2)	58.3 (±7.2)	56.9 (±6.6)



Mississippi Youth Tobacco Use {1998-2018} Ever Tried a Cigar - Public Middle School

APPENDIX {CIGARS}

	2018	2017	2016	2015	2014	2013	2012	2011	2010
TOTAL	10.9 (±2.5)	6.8 (±1.8)	9.5 (±2.0)	8.6 (±1.8)	9.8 (±3.2)	9.3 (±2.1)	10.6 (±2.6)	11.1 (±2.8)	11.7 (±2.1)
SEX									
FEMALE	10.8 (±2.6)	6.4 (±2.1)	6.2 (±1.9)	7.0 (±2.5)	4.9 (±1.6)	6.5 (±2.1)	8.1 (±2.4)	9.3 (±3.1)	9.1 (±2.6)
MALE	11.2 (±3.5)	7.1 (±1.9)	12.7 (±3.6)	10.1 (±1.9)	14.5 (±5.2)	12.1 (±2.5)	13.0 (±3.9)	13.0 (±3.1)	14.0 (±3.2)
RACE									
WHITE	7.5 (±2.7)	6.2 (±2.3)	8.7 (±2.8)	7.3 (±1.8)	7.3 (±2.7)	7.5 (±2.4)	12.4 (±2.6)	9.4 (±4.3)	10.2 (±2.7)
BLACK	13.9 (±3.9)	6.9 (±2.6)	9.9 (±2.3)	10.0 (±3.0)	12.2 (±4.6)	10.9 (±2.8)	9.4 (±4.0)	13.0 (±3.2)	12.9 (±3.1)
GRADE									
6	7.5 (±2.6)	3.0 (±1.4)	8.6 (±3.0)	5.0 (±2.3)	6.2 (±4.3)	6.0 (±2.4)	6.0 (±3.7)	8.3 (±4.1)	6.4 (±2.4)
7	9.0 (±5.1)	5.5 (±2.2)	6.6 (±2.4)	9.8 (±3.2)	10.0 (±7.4)	8.9 (±2.5)	10.9 (±4.0)	11.2 (±3.5)	10.9 (±3.5)
8	16.4 (±3.6)	11.7 (±3.4)	13.1 (±4.2)	10.9 (±2.9)	13.3 (±4.8)	13.3 (±4.0)	15.5 (±3.6)	13.6 (±4.2)	17.5 (±3.6)

	2009	2008	2006	2004	2003	2002	2000	1999	1998
TOTAL	14.3 (±2.5)	19.8 (±2.5)	18.6 (±2.7)	22.2 (±2.5)	20.4 (±1.7)	N/A	31.8 (±2.5)	33.7 (±4.5)	32.5 (±4.1)
SEX									
FEMALE	10.4 (±2.0)	14.9 (±2.6)	14.3 (±2.8)	17.9 (±2.1)	15.6 (±1.8)	N/A	23.6 (±3.1)	24.6 (±4.3)	24.2 (±5.6)
MALE	18.2 (±3.8)	24.5 (±3.1)	22.9 (±4.0)	26.6 (±3.7)	25.0 (±1.8)	N/A	39.5 (±4.0)	42.2 (±5.4)	40.7 (±3.9)
RACE									
WHITE	14.1 (±3.9)	14.9 (±2.7)	17.0 (±3.5)	19.6 (±3.0)	17.5 (±1.8)	N/A	29.4 (±2.6)	31.1 (±3.3)	29.2 (±3.6)
BLACK	14.1 (±3.0)	24.1 (±3.2)	20.4 (±3.5)	24.8 (±3.2)	22.7 (±2.0)	N/A	35.0 (±5.1)	36.3 (±7.2)	35.6 (±6.4)
GRADE									
6	7.4 (±2.7)	11.9 (±3.3)	14.7 (±3.4)	14.8 (±3.0)	14.1 (±1.7)	N/A	22.8 (±5.1)	24.6 (±6.8)	19.2 (±3.5)
7	13.7 (±5.0)	20.4 (±3.8)	16.0 (±4.6)	23.9 (±4.3)	20.6 (±2.0)	N/A	33.2 (±4.4)	35.6 (±5.9)	35.5 (±8.7)
8	21.9 (±4.2)	27.6 (±4.1)	25.3 (±3.5)	27.6 (±4.4)	26.5 (±2.4)	N/A	39.2 (±5.5)	40.3 (±5.5)	40.2 (±6.4)

Mississippi Youth Tobacco Use {1998-2018} Frequent Cigar Smoking - Public High School

	2018	2017	2016	2015	2014	2013	2012	2011	2010
TOTAL	1.6 (±0.7)	1.2 (±0.5)	0.8 (±0.3)	0.5 (±0.4)	1.5 (±0.8)	1.8 (±0.8)	2.1 (±0.9)	2.6 (±1.0)	2.2 (±0.8)
SEX									
FEMALE	1.2 (±0.9)	1.5 (±0.9)	0.3 (±0.3)	0.1 (±0.2)	0.8 (±0.8)	1.0 (±0.5)	0.9 (±0.8)	1.8 (±1.0)	1.3 (±0.9)
MALE	2.0 (±1.0)	0.9 (±0.5)	1.3 (±0.7)	0.9 (±0.8)	2.2 (±1.3)	2.6 (±1.5)	3.2 (±1.4)	3.3 (±1.8)	3.1 (±1.5)
RACE									
WHITE	1.3 (±0.8)	1.3 (±0.6)	0.5 (±0.5)	0.1 (±0.2)	0.7 (±0.7)	1.5 (±0.9)	1.3 (±0.9)	2.2 (±0.9)	2.0 (±1.2)
BLACK	1.8 (±0.8)	0.8 (±0.6)	0.8 (±0.6)	0.9 (±0.9)	2.2 (±1.3)	2.1 (±1.0)	2.8 (±1.3)	2.9 (±1.6)	2.2 (±0.9)
GRADE									
9	1.0 (±0.7)	0.7 (±0.7)	0.4 (±0.4)	0.2 (±0.3)	1.3 (±1.5)	0.0 (±0.0)	0.9 (±0.8)	1.7 (±1.5)	1.5 (±1.2)
10	1.6 (±1.5)	0.9 (±0.6)	0.2 (±0.3)	0.2 (±0.4)	1.7 (±1.4)	2.0 (±1.7)	3.2 (±2.0)	2.1 (±1.7)	0.6 (±0.7)
11	1.0 (±1.2)	1.0 (±1.2)	0.8 (±1.1)	0.9 (±1.2)	1.6 (±1.4)	2.5 (±1.6)	2.0 (±1.9)	1.7 (±1.2)	2.9 (±2.1)
12	2.6 (±1.5)	2.4 (±1.3)	2.0 (±1.3)	0.7 (±1.0)	1.1 (±1.2)	3.1 (±1.4)	2.3 (±2.4)	5.0 (±2.6)	4.1 (±1.9)

	2009	2008	2006	2004	2003	2002	2000	1999	1998
TOTAL	2.4 (±0.7)	2.7 (±1.5)	1.6 (±0.9)	2.7 (±0.6)	2.0 (±0.4)	N/A	2.1 (±1.0)	2.7 (±1.0)	1.4 (±0.9)
SEX									
FEMALE	0.9 (±0.5)	2.4 (±1.6)	0.5 (±0.4)	1.1 (±0.5)	0.9 (±0.3)	N/A	1.1 (±0.7)	1.6 (±1.1)	0.2 (±1.0)
MALE	4.0 (±1.3)	3.0 (±1.8)	2.7 (±1.6)	4.3 (±1.1)	3.1 (±0.8)	N/A	2.9 (±1.5)	4.0 (±1.8)	2.6 (±1.5)
RACE									
WHITE	2.3 (±1.1)	1.5 (±1.0)	1.7 (±1.1)	2.6 (±0.8)	1.6 (±0.5)	N/A	1.1 (±0.8)	1.8 (±1.0)	1.5 (±1.1)
BLACK	2.3 (±1.8)	3.7 (±2.6)	1.3 (±1.2)	2.8 (±1.3)	1.9 (±0.6)	N/A	2.3 (±1.8)	3.8 (±1.4)	0.9 (±1.2)
GRADE									
9	1.7 (±1.2)	1.5 (±1.3)	0.6 (±0.8)	1.8 (±0.7)	1.9 (±0.6)	N/A	1.3 (±1.1)	2.4 (±1.4)	1.1 (±1.3)
10	2.4 (±1.5)	3.1 (±2.2)	2.0 (±1.7)	2.8 (±1.2)	1.6 (±0.6)	N/A	2.3 (±1.1)	3.3 (±1.6)	1.8 (±1.2)
11	4.3 (±1.9)	1.7 (±2.6)	1.8 (±1.6)	4.0 (±2.3)	2.5 (±1.1)	N/A	2.4 (±2.0)	3.0 (±2.5)	1.0 (±1.6)
12	1.3 (±1.0)	4.6 (±3.1)	2.2 (±1.6)	2.9 (±1.1)	2.2 (±0.7)	N/A	2.2 (±1.8)	2.4 (±1.3)	1.4 (±1.5)

Mississippi Youth Tobacco Use {1998-2018} Frequent Cigar Smoking - Public Middle School

APPENDIX {CIGARS}

	2018	2017	2016	2015	2014	2013	2012	2011	2010
TOTAL	0.1 (±0.1)	0.2 (±0.2)	0.5 (±0.3)	0.3 (±0.3)	0.3 (±0.2)	0.6 (±0.4)	0.1 (±0.2)	0.6 (±0.3)	0.6 (±0.4)
SEX									
FEMALE	0.0 (±0.0)	0.0 (±0.0)	0.1 (±0.2)	0.1 (±0.1)	0.3 (±0.4)	0.1 (±0.2)	0.1 (±0.2)	0.1 (±0.3)	0.3 (±0.4)
MALE	0.2 (±0.3)	0.3 (±0.3)	0.8 (±0.5)	0.6 (±0.5)	0.3 (±0.1)	1.0 (±0.7)	0.1 (±0.3)	1.1 (±0.7)	0.8 (±0.7)
RACE									
WHITE	0.1 (±0.2)	0.3 (±0.3)	0.4 (±0.3)	0.5 (±0.5)	0.2 (±0.1)	0.5 (±0.5)	0.3 (±0.4)	0.2 (±0.4)	0.5 (±0.7)
BLACK	0.1 (±0.2)	0.0 (±0.0)	0.4 (±0.5)	0.1 (±0.2)	0.3 (±0.4)	0.5 (±0.4)	0.0 (±0.0)	1.0 (±0.6)	0.6 (±0.6)
GRADE									
6	0.3 (±0.4)	0.0 (±0.0)	0.4 (±0.5)	0.1 (±0.1)	0.2 (±0.3)	0.7 (±0.7)	0.0 (±0.0)	1.4 (±1.0)	0.7 (±0.7)
7	0.0 (±0.0)	0.2 (±0.3)	0.3 (±0.4)	0.3 (±0.4)	0.2 (±0.3)	0.0 (±0.1)	0.1 (±0.3)	0.3 (±0.4)	0.2 (±0.3)
8	0.0 (±0.0)	0.3 (±0.4)	0.7 (±0.8)	0.6 (±0.7)	0.5 (±0.6)	1.1 (±0.7)	0.2 (±0.5)	0.2 (±0.4)	0.8 (±1.0)

	2009	2008	2006	2004	2003	2002	2000	1999	1998
TOTAL	1.2 (±0.6)	1.7 (±0.8)	0.9 (±0.6)	1.0 (±0.4)	0.9 (±0.3)	N/A	0.9 (±0.7)	0.9 (±0.4)	1.7 (±1.1)
SEX									
FEMALE	0.6 (±0.6)	0.9 (±0.5)	0.3 (±0.3)	0.4 (±0.3)	0.5 (±0.3)	N/A	0.1 (±0.6)	0.3 (±0.3)	0.9 (±0.9)
MALE	1.8 (±1.0)	2.5 (±1.5)	1.5 (±1.1)	1.6 (±0.8)	1.3 (±0.3)	N/A	1.7 (±1.3)	1.5 (±0.8)	2.4 (±1.7)
RACE									
WHITE	1.0 (±0.6)	1.3 (±0.9)	0.8 (±0.8)	0.9 (±0.6)	0.8 (±0.3)	N/A	0.8 (±1.4)	0.9 (±0.6)	1.3 (±1.9)
BLACK	1.3 (±1.0)	1.8 (±1.3)	0.9 (±0.7)	1.1 (±0.5)	0.8 (±0.4)	N/A	1.2 (±1.1)	0.8 (±0.6)	1.7 (±1.2)
GRADE									
6	0.9 (±0.7)	1.1 (±0.7)	0.6 (±0.6)	0.4 (±0.5)	0.6 (±0.4)	N/A	1.2 (±2.4)	1.0 (±0.8)	0.2 (±0.9)
7	2.0 (±1.2)	1.9 (±1.9)	0.6 (±0.8)	1.3 (±0.7)	0.7 (±0.3)	N/A	0.9 (±1.1)	0.6 (±0.5)	1.0 (±1.3)
8	0.7 (±0.9)	2.0 (±1.3)	1.2 (±1.0)	1.2 (±0.6)	1.4 (±0.5)	N/A	0.7 (±1.0)	1.1 (±0.8)	1.9 (±1.6)

methods

BACKGROUND

The Centers for Disease Control and Prevention's (CDC) Office on Smoking and Health (OSH) provides technical assistance to the states to administer this survey. Mississippi has administered the Youth Tobacco Survey (YTS) in 1998, 1999, 2000, 2002, 2003, 2004, 2006, 2008, 2009, 2010, 2011, 2012, 2013, 2014, 2015, 2016, 2017, and 2018.

THE PURPOSE OF THE YTS is to provide states with the data needed to design, implement, and evaluate comprehensive tobacco control programs that work to prevent young people from beginning tobacco use and help those who have already started using tobacco to quit.

THE YTS COLLECTS DATA from students in grades 6 through 12.

YTS DATA provide information on many key intermediate and long-term tobacco-related indicators, allowing states to measure progress toward state goals and objectives.

SAMPLE DESIGN

A multi-stage sample design was applied with public middle and high schools selected proportional to enrollment size. Classrooms were chosen randomly within selected schools, and all students in selected classes were eligible for participation. Data were collected by means of an

anonymous and confidential self-administered questionnaire. The questionnaires were group-administered in classrooms during a normal class period by teachers following standardized procedures.

EDITING, WEIGHTING, AND INITIAL ANALYSIS OF DATA

The Research Triangle Institute and the CDC's Office of Smoking and Health provided technical assistance with the processing and weighting of the data. A weighting factor was applied to each student record to adjust for non-response at the school, class, and student levels. SUDAAN statistical software was used to calculate standard errors for estimates and 95 percent confidence intervals. Weight adjustments were made for the following:

WEIGHT = $W1 * W2 * f1 * f2 * f3 * f4$

W1 = inverse of the probability of selecting the school

W2 = inverse of the probability of selecting the classroom within the school

F1 = a school-level non-response adjustment factor calculated by school size (small, medium, large)

F2 = a class adjustment factor calculated by school

F3 = a student-level non-response adjustment factor calculated by class

F4 = a post stratification adjustment factor calculated by gender and grade

contact us!

Nell Valentine, MS

nell.valentine@ssrc.msstate.edu

Robert McMillen, PhD

robert.mcmillen@ssrc.msstate.edu

Social Science Research Center

ssrc.msstate.edu

Mississippi State University

msstate.edu

**One Research Blvd., Suite 103
Starkville, MS 39759**

P: 662.325.7127

F: 662.325.7966

For more information visit

mstobaccodata.org

MISSISSIPPI STATE UNIVERSITY DOES NOT DISCRIMINATE ON THE BASIS OF RACE, COLOR, RELIGION, NATIONAL ORIGIN, SEX, AGE, DISABILITY, OR VETERAN STATUS. THIS REPORT IS FUNDED BY A GRANT OF THE MISSISSIPPI STATE DEPARTMENT OF HEALTH.



MISSISSIPPI STATE UNIVERSITY™
SOCIAL SCIENCE RESEARCH CENTER



MISSISSIPPI STATE DEPARTMENT OF HEALTH